



Expansive viewing area and heat-circulating performance create the ideal room ambiance with an intense, active flame delivering warm and cozy heat.

**LENNOX**  
HEARTH PRODUCTS

**ELITE™** SERIES



**EDV40 shown** with standard black liner.

■ The added firebox depth of the Elite Direct Vent Series is the key to this proven design that has more flame and embers, more heat, more efficiency, and more visual appeal, than slim chassis models. Each Elite fireplace is configured with the features that you want most; a simple classic clean face design and precise flame and heat control. With performance options like energy saving electronic ignition, thermostatic remote controls, and heat circulating blowers, the Elite is a powerful and dependable heater that is perfect for the heart of your home. ■

## STANDARD FEATURES

Clean face heat circulating design for a stylish appearance without sacrificing heat output

Charred split oak-style log set on a steel grate with a glowing ember bed

Black firebox interior

Top and rear flue outlets simplify installation

Choice of millivolt controls or energy saving electronic ignition with battery back up

Variable High/Low valve for precise flame and heat control

Heater rated performance allows use of thermostatic controls for dependable and precise area heating

Limited Lifetime Warranty

## OPTIONAL ACCESSORIES

### OPTIONAL ACCESSORIES

Ceramic Brick liners available in two patterns:



*Buff Rustic brick*



*Buff Herringbone*

Upper and Lower Sunrise Filigree panels are available in two finishes:

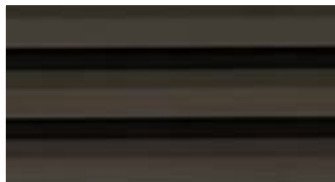


*Satin Pewter finish*



*Black Paint finish*

Select Black Louvers for additional convection air flow



*Black Louver*

### STYLE VIEW™ DOOR DESIGNS

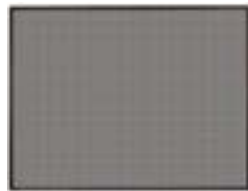
Style View™ doors add the look of a traditional door to your fireplace and have a built in screen panel kit\*



*Square pane door*



*Arch door*



*Screen panel kit\**



*Arch pane door*

\*Screen panel kit provides a barrier to prevent direct contact with hot glass surface.

Note: Style View™ doors available in satin pewter, and charcoal finishes.

### REMOTES AND CONTROLS



Choose from three wall controls or five remote controls for convenient operation and heat control. Consult your dealer for Lennox® brand controls.

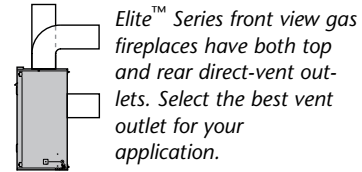
Blower kits for improved air circulation (not shown):

- FBK-100 single speed operation
- FBK-200 variable speed
- FBK-250 variable speed thermostatic control turns blower on when the fireplace warms up and off when it cools down. Perfect for use with wall thermostats or remote controls

## DIMENSIONS



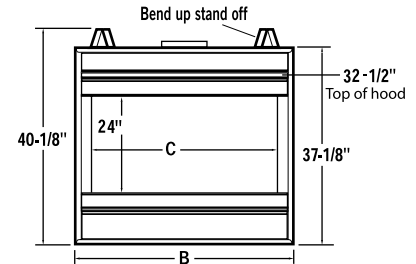
## TOP & REAR DIRECT VENTING



Elite™ Series front view gas fireplaces have both top and rear direct-vent outlets. Select the best vent outlet for your application.

## GAS FIREPLACE SPECIFICATIONS

MODEL	A	B	C
EDV35	21-1/2"	35-1/8"	29-1/2"
EDV40	26-1/2"	40-1/8"	34-1/2"
EDV45	31-1/2"	45-1/8"	39-1/2"



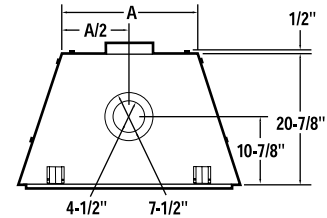
Front View

## GAS FIREPLACE EFFICIENCY %

MODEL	CANADIAN ENERGUIDE RATING**	AFUE***	BTU/hr	
			Natural (NG)	Propane (LP)
EDV35	61 NG / 61 LP	66 NG / 66 LP	25,000 - 19,000	24,000 - 18,000
EDV40	64 NG / 65 LP	66 NG / 66 LP	27,000 - 21,000	27,000 - 21,000
EDV45	63 NG / 62 LP	67 NG / 67 LP	31,000 - 25,000	29,000 - 23,000

\*\*Intermittent ignition systems

\*\*\*Annual Fuel Utilization Efficiency (AFUE) is the recognized U.S. rating system for the total efficiency of heating products.



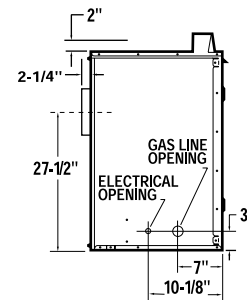
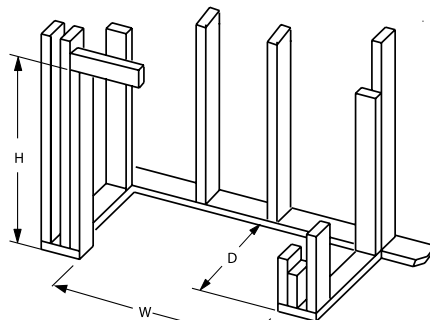
Top View

## FRAMING DIMENSIONS

MODEL	WIDTH (W)	HEIGHT (H)	DEPTH* (D)
EDV35	35-1/2"	40-1/2"	22-1/4"
EDV40	40-1/2"	40-1/2"	22-1/4"
EDV45	45-1/2"	40-1/2"	22-1/4"

FLAT WALL FRAMING SPECIFICATIONS

\*SEE INSTALLATION MANUAL OR SPECIFICATION SHEET FOR CORNER INSTALLATION



Right Side View

**On the cover:** EDV35 shown with satin pewter arch pane Style View™ doors and Buff Rustic brick liner kit.

## PRODUCTS AND DEALERS YOU CAN COUNT ON

At Lennox, we understand how important it is for you to feel comfortable at home, so we're committed to providing you with the finest hearth products available. Choosing the right dealer for your hearth needs is every bit as important as choosing the right brand, and we think you'll agree that our dealers are a big reason why you can count on getting quality customer service when you call.



© Innovative Hearth Products LLC 2013

Visit us at [www.lennoxhearthproducts.com](http://www.lennoxhearthproducts.com)

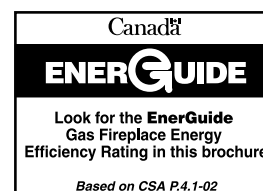
785118M 09/13

## IMPORTANT NOTES:

As with any heating appliance, fireplace or stove, this appliance is extremely hot during operation. Read and understand all operating instructions before using this appliance. For further information, consult your dealer.

Local conditions, such as elevation, wind, vent configuration and choice of fuel will affect overall appearance of the fire and heating performance. Performance can also vary with home design and insulation, climate, condition and type of fuel used, appliance location, burn rate, accessories chosen, chimney installation and how the appliance is operated.

Diagrams, illustrations and photographs are not to scale—consult installation instructions. Product designs, materials, dimensions, specifications, colors and prices are subject to change or discontinuance without notice.



100% recycled

Report number: 116-F-05d-5