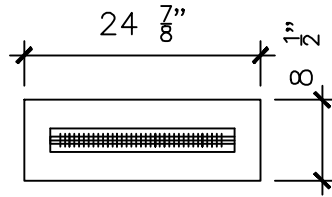


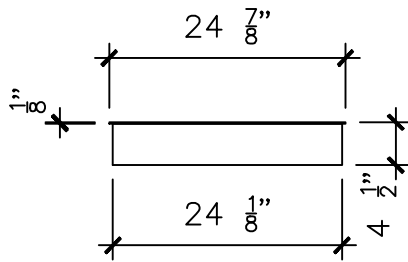
# THE BIO FLAME – 24” BURNER

---

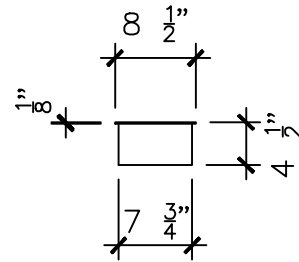
## MODEL SPECIFICATIONS



TOP



FRONT



SIDE

### CLEARANCES:

#### INSERTING WITHIN A FIREBOX SETTING:

The Bio Flame 24" BURNER can only be fitted into a non-combustible firebox that has minimum clearances of 35"W x 20"H x 14"D.

Custom Made fireboxes must:

-Be made out of a non-combustible material such as stainless steel

\*When recessing the tray into a non-combustible base with no firebox, the overhead clearance required is 60"MIN. to the nearest combustible\*

