


CAT5E DIRECT BURIAL (FLOODED CORE) 24AWG, UTP, 4 PAIR, SOLID 1000' PULL BOX

PART NUMBER:
059-485/CMXF



PG. 1	<input type="checkbox"/> APPROVALS:	<input type="checkbox"/> DATE:	<p>THE INFORMATION CONTAINED IN THIS DOCUMENT IS PROPRIETARY TO VERTICAL CABLE AND MAY NOT BE DISCLOSED OR TRANSMITTED TO ANY OTHER PARTIES WITHOUT THE EXPRESS WRITTEN PERMISSION OF VERTICAL CABLE. THIS INFORMATION IS PROVIDED FOR THE PURPOSES OF QUOTATION ONLY.</p> 
	MARKETING		
	TECHNICAL		
	SALES		
	FINAL		

GENERAL INFORMATION ABOUT THIS PRODUCT:

MANUFACTURER:

REFERENCE: 059-485/CMXF

DESCRIPTION:

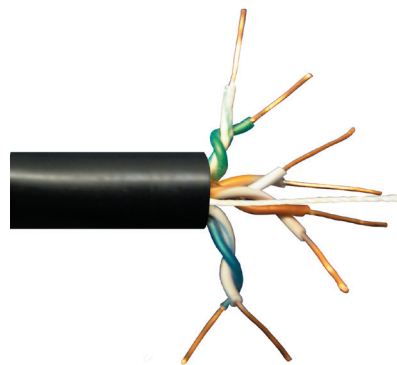
Category-5E CMXF Direct Burial, Flooded Core, 1000' 8-Conductor, Bulk, Black-Outdoor Jacket, AWG24 Solid-Bare Copper, Pull Box (UL/ETL)

ACCESSORIES INCLUDED WITH THIS PRODUCT:

NONE

FEATURES AND BENEFITS:

- High-Performance Data Communications Cable
- Suitable for 350MHz High-Speed Data Applications, Gigabit Ethernet, Fast Ethernet and 155Mbps TP-PMD/CDDI
- Designed for Direct Burial Installations
- PVC Jacket (CMX) for Outdoor Use with Flooded Core
- Category-5E Unshielded Twisted Pair (UTP) Cable
- 4-Pair – Easily Identified Color-Striped Pairs
- 24AWG Solid Bare Copper Conductors
- Excellent Attenuation and Crosstalk Characteristics
- Exceeds EIA/TIA 568 B.2-1, UL, CSA and ISO/IEC 11801 specifications
- UL/cUL or ETL Listed
- Supplied in 1000' Pull Boxes



PULL BOX

CABLE

PG. 2	<input type="checkbox"/> P/N: 059-485/CMXF	<input type="checkbox"/> PRODUCT: CAT5E DIRECT BURIAL FLOODED CORE
	<input type="checkbox"/> AUTHOR:	
	<input type="checkbox"/> DATE: 04/03/07 <input type="checkbox"/> REV: 01	

TECHNICAL INFORMATION ABOUT THIS PRODUCT:

MANUFACTURER:

REFERENCE: 059-485/CMXF

DESCRIPTION:

Category-5E CMXF Direct Burial, Flooded Core, 1000' 8-Conductor, Bulk, Black-Outdoor Jacket, AWG24 Solid-Bare Copper, Pull Box (UL/ETL)

TECHNICAL SPECS:

Rated Temperature (°C)	75
Product Standard Certification	CMX
Flammability Test	
Application	Horizontal Wiring in LAN
Reference Standard	EIA/TIA 568 & ISO/IEC 11801
Conductor	Solid Bare Copper
Size	24 AWG
Diameter (mm)	0.50
Insulation	PE
Average Thickness (mm)	0.205
Min. Point Thickness (mm)	0.190
Insulation Diameter (±0.005mm)	0.91
Twisted Pair Diameter (±0.01)	1.82
Assembly Diameter	4.00
PE Tape	Gel Filled
Jacket	Coverage>125%
	PVC
Average Thickness (mm)	0.60
Min. Point Thickness (mm)	0.54
Outer Diameter (±0.10mm)	5.20
Rip Cord	Yes
Color	Black
Color of Pairs	
Pair 1	Blue,White-Blue
Pair 2	Orange,White-Orange
Pair 3	Green,White-Green
Pair 4	Brown,White-Brown
Mechanical Characteristics	
Test Object	Jacket
Test Material	PVC
Before Tensile Strength (Mpa)	>=13.8
Aging Elongation (%)	>=100
Aging Condition (°Cxhrs)	100x168
After Tensile Strength (Mpa)	>=85% of unaged
Aging Elongation (%)	>=50% of unaged
Cold Bend (-20±2° Cx4hrs)	No Crack

**PG.
3**

P/N: 059-485/CMXF

PRODUCT: CAT5E DIRECT BURIAL FLOODED CORE

AUTHOR:

DATE: 04/03/07

REV: 01



Marking

VERTICAL E312655 (UL) C(UL) CMX FT4 UTP 4PR 24 AWG VERIFIED DIRECT BURIAL (FLOODED)
 CAT5E 350MHz TIA/EIA - 568B.2 STANDARD CMR (VID:X#) XXXFT
 SEQUENTIAL FOOT MARKERS ON JACKET


Electrical Characteristics:

1.0-100MHz Impedance (Ohms)	100±15
100-200MHz Impedance (Ohms)	100±25
200-350MHz Impedance (Ohms)	100±35
1.0-350.0MHz Delay Skew (ns/100m)	<=45
Pair-to-Ground Capacitance Unbalance (pF/100m)	<=330
Max. Conductor DC Resistance 20°C (ohms/km)	93.8
Resistance Unbalance (%)	<=5

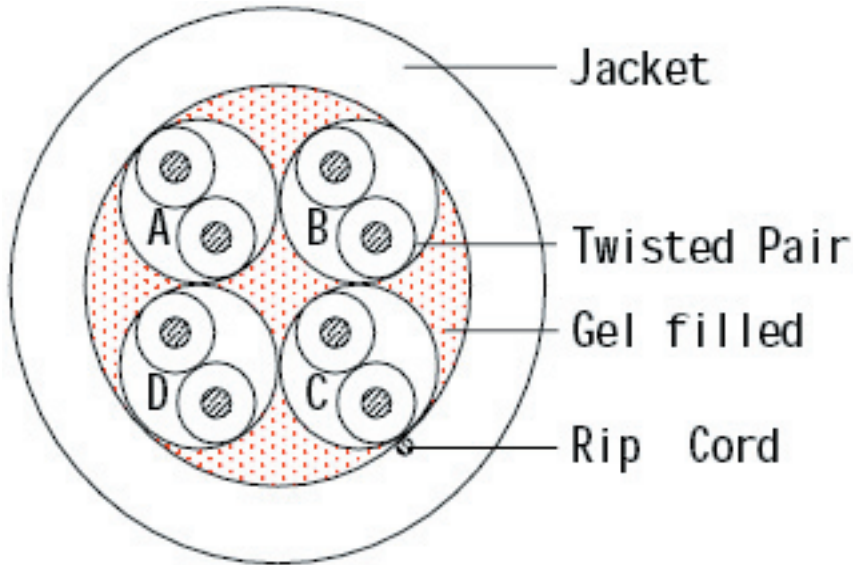
Frequency (Mhz)	Return Loss (Min dB)	Attenuation Max	Next (Min dB)	ACR Typ(dB)
0.772	19.4	1.8	67.0	67.7
1	20.0	2.0	65.3	67.3
4	23.0	4.1	56.3	56.2
8	24.5	5.8	51.8	50.0
10	25.0	6.5	50.3	47.8
16	25.0	8.2	47.3	44.0
20	25.0	9.3	45.8	41.5
25	24.3	10.4	44.3	38.9
31.25	23.6	11.7	42.9	36.2
62.5	21.5	17.0	38.4	27.4
100	20.1	22.0	35.3	19.3
200	18.0	32.4	30.8	3.5
300	16.8	41.0	28.2	_____
350	16.3	44.9	27.2	_____

Frequency (Mhz)	PSNext (Min dB)	ELFEXT Min(db/100m)	PSELFEXT Min(db/100m)
0.772	64.0	66.0	63.0
1	62.3	63.8	60.8
4	53.3	51.7	48.7
8	48.8	45.7	42.7
10	47.3	43.8	40.8
16	44.3	39.7	36.7
20	42.8	37.7	34.7
25	41.3	35.8	32.8
31.25	39.9	33.9	30.9
62.5	35.4	27.8	24.8
100	32.3	23.8	20.8
200	27.8	17.7	14.7
300	25.2	14.2	11.2
350	24.2	12.9	9.9

PG. 4	<input type="checkbox"/> P/N: 059-485/CMXF	<input type="checkbox"/> PRODUCT: CAT5E DIRECT BURIAL FLOODED CORE
	<input type="checkbox"/> AUTHOR:	
	<input type="checkbox"/> DATE: 04/03/07	<input type="checkbox"/> REV: 01



TECHNICAL DIAGRAM:



LABEL FOR PRODUCTION DATE CONTROL:

THIS UPC LABEL IS PLACED ON EACH 1 UNIT SHIPMENT CARTON.

LABEL: UPC CODE



IMPORTANT NOTE: --

UL FILE NUMBER: E312655

ETL FILE NUMBER: --

PG.
5

P/N: 059-485/CMXF

PRODUCT: CAT5E DIRECT BURIAL FLOODED CORE

AUTHOR:

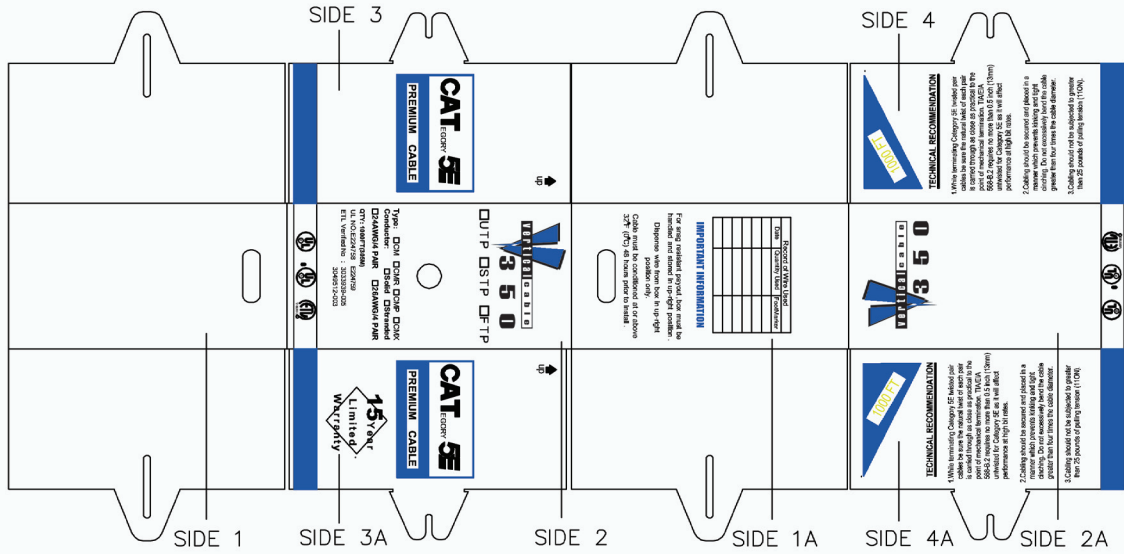
DATE: 04/03/07

REV: 01



PRODUCT PACKAGING DIMENSIONS:

PULL BOX PACKAGING - FLAT :



PULL BOX PACKAGING:

vertical cable
3 5 0

TECHNICAL RECOMMENDATION

1. While terminating Category 5E twisted pair cables be sure the natural twist of each pair is carried through as close as practical to the point of mechanical termination. TIA/EIA 568-B.2 requires no more than 0.5 inch (13mm) untwisted for Category 5E, as it will affect performance at high bit rates.
2. Cabling should be secured and placed in a manner which prevents kinking and tight cinching. Do not excessively bend the cable greater than four times the cable diameter.
3. Cabling should not be subjected to greater than 25 pounds of pulling tension (110N).

IMPORTANT INFORMATION

For snag resistant payout, box must be handled and stored in up-right position.

Dispense wire from box in up-right position only.

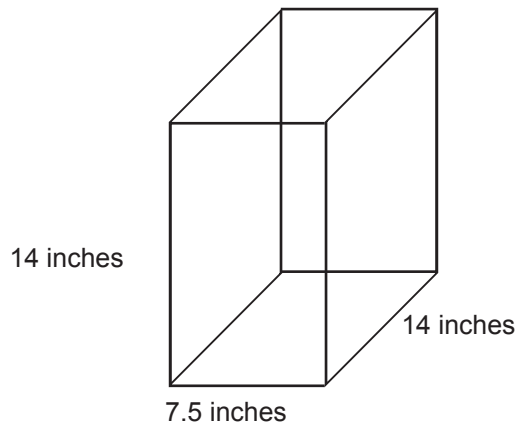
Cable must be conditioned at or above 32°F (0°C) 48 hours prior to install.

Record of Wire Used		
Date	Quantity Used	FootMarker

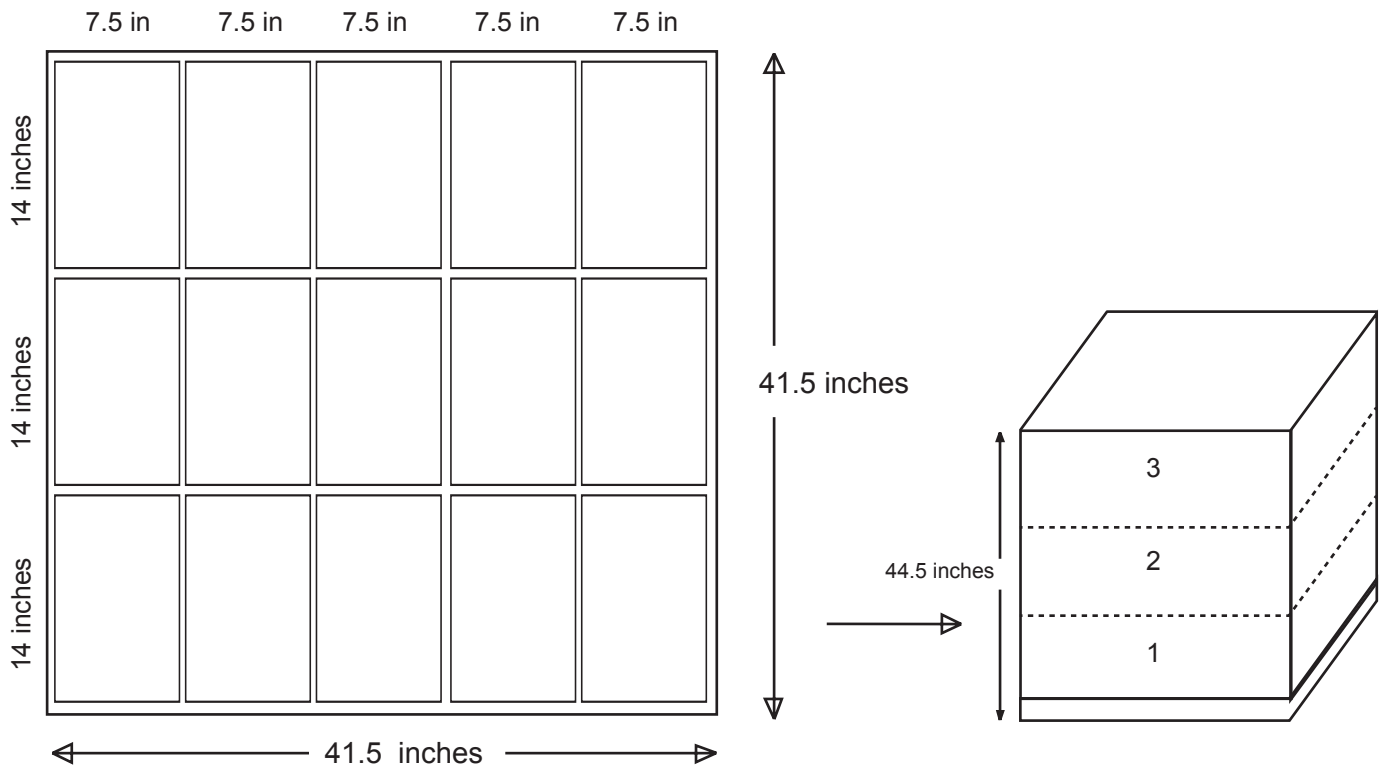
PG. 6	<input type="checkbox"/> P/N: 059-485/CMXF	<input type="checkbox"/> PRODUCT: CAT5E DIRECT BURIAL FLOODED CORE
	<input type="checkbox"/> AUTHOR:	
	<input type="checkbox"/> DATE: 04/03/07	

SHIPMENT CARTON:

SHIPMENT BOX DIMENSION:



SHIPMENT CARTONS PLACED IN A PALLET (ONE PALLET FITS 45 CARTONS):



**PG.
7**

P/N: 059-485/CMXF

PRODUCT: CAT5E DIRECT BURIAL FLOODED CORE

AUTHOR:

DATE: 04/03/07

REV: 01

