

Technical Data

(Not to be considered specifications)

Colors

Mortar White, White White, Buff, Tan, Gray, Woodtone Cedar

Packaging

5-gallon straight sided pails and 29 oz. fiber cartridges

Application Range

40°–90°F (4°–32°C)

Service Range

-30°–250°F (-34°–121°C)

Jog Jam Coverage Rate

Joint Width	Recommended Joint Depth*	LINEAL FEET	
		Per 5 gal. pail	Per 29 oz. cartridge
1/2"	1/4"	770	35.0
1"	1/2"***	195	8.9
1.5"	1/2"***	125	5.7
2"	1/2"***	95	4.3
2.5"	1/2"***	75	3.5
3"	1/2"***	65	3.0
3.5"	1/2"***	55	2.5
4"	1/2"***	45	2.0

*Refer to the Log Jam data tec (LJC 002) or product packaging for more details about proper joint design. ** If applied 3/8" deep, increase lineal feet approx. 35%

Paintability

Paintable with latex coatings after a minimum of 24 hours curing (longer on wider joints) and after 5 days with most oil-based coatings. Contact Sashco for more specific guidance.

Compatibility

Log Jam will adhere to woods treated with most preservatives including borates**, pentachlorophenol, and copper compounds. Log Jam is also compatible with insulating glass sealants and most building materials, including foam insulation and vinyl windows.

** Some borate wood preservatives contain glycols or other agents that could interfere with adhesion. Sashco's PeneTreat® contains no glycols.

Specifications

Passes ASTM C-834, ASTM G-53 QUV, ASTM D-638 and ASTM C-920

VOC

Less than 1.5% by weight, max.

Tack-Free Time

Less than 30 min. (70°F, 50% relative humidity)

Cure-Through Time

3 weeks (1/2" thickness, 70°F, 50% relative humidity)

Extrusion Rate

800 g/min (1/8" orifice at 40 psi)

Freeze-Thaw

Passes 5 cycles (0°F - 70°F)

Hardness, Shore A

29

Elongation @ Break

175%

Slump

1/16"(max.) in test joint (3.5"H x 3/4"D) at 70°F

Stain

None

Water Resistance

No washout (4 hours, 40°F, 50% relative humidity)

In severe conditions - under 40°F (4°C) and/or 70%+ humidity - full rain resistance may take longer. Cover exterior walls with plastic if rainfall is expected within 24 hours after installation.

Not recommended for continuous submersion or areas exposed to foot or vehicular traffic.

Weathering

Washout	None
Cracking	None
Discoloration	Passes ASTM C-834

Notice

Sashco will test any stain to determine compatibility with Jog Jam. Just call and send us a sample of the stain you want tested. Test results available in a minimum of 6 weeks.

The data reported here are believed to be reliable. No warranty is made or implied concerning the accuracy or the results obtained from their use.

10-Year Warranty

When applied in accordance with the Data Tec sheet LJC 002, Sashco Sealants warrants Log Jam for the following items for 10 years: 1) It will not pull away from log surfaces 2) It will remain elastic and stretch up to 100% (+/-50%) of the original joint size. If Log Jam fails to perform as specified above, return proof of purchase and Sashco will furnish product to repair the damaged areas. This warranty includes product replacement only. Labor costs for application of any product are specifically excluded. No other warranties are expressed or implied. Sashco, Inc. reserves the right to inspect the structure prior to any product replacement. (Special color matches excluded.) Contact Sashco for information on the Limited Lifetime Warranty.

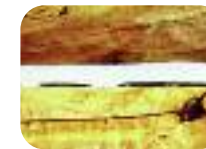
merchantability or fitness for a particular purpose, which warranties are specifically excluded and disclaimed. This Warranty gives you specific legal rights. You may have other rights which vary from state to state. Some states do not allow exclusion of implied warranties in consumer or other sales, limitation on the duration of implied warranties, or exclusion or limitation of incidental or consequential damages. Thus, the limitations or exclusions contained above may not apply to you depending upon your specific circumstances.



10300 E. 107th Place • Brighton, CO 80601
1-800-767-5656 • 303-286-7271 • www.sashco.com

Log Jam[®] chinking

When other chinking pulls away, Log Jam holds its seal.



Competitive brand.



Log Jam holds its seal.

Since its introduction in 1985, Log Jam chinking has been the recognized industry standard in elasticity, adhesion and durability. Here's why:

- Log Jam moves with your logs and sticks like no other, eliminating costly repairs.
- Log Jam has superior early water resistance. No more worrying about that unexpected rain storm.
- Log Jam won't eat away at Styrofoam bead board. No more unsightly chinking lines that look

dented and deformed – just the rustic, traditional look of mortar you want.

- Log Jam has been used on thousands of log homes throughout the world. Backed by a limited lifetime guarantee, you can be confident that you're using the right product for your dream home.

When other chinking pulls away, leaving your home vulnerable to weather, air infiltration and insects, Log Jam is still maintaining the tight seal it had when first applied.

Fundamental Chinking Application Guidelines

Proper substrate preparation and application are imperative for product longevity. Read this instruction sheet, LJC 002, before applying any product.

1. Best results are obtained when Log Jam is applied to clean, dry, stained wood. Make certain there is compatibility between your stain and Log Jam. Log Jam has a lifetime warranty when applied with Sashco's stains: Capture Log Stain / Cascade staining system, High Sierra, Transformation and Symphony Interior Clear Coat. If using a different stain or finish, contact Sashco for guidance. Call 1-800-767-5656, or visit and chat live at www.sashco.com.
2. Check the weather forecast. Finishing products are best applied in moderate weather conditions, i.e., out of direct sunlight, in dry, warm conditions.
3. Check the log surface temperature. The surface temperature should be between 40°–90°F (4°–32°C).
4. Install a bond breaker before Log Jam is applied. Backer rod, Grip Strip, and clear packing tape all perform this function well. If Log Jam is applied over white styrene bead-board or Tyvek house wrap, it is best to cover the bead-board or wrinkle-free house wrap with clear packing tape (to prevent adhesion to those materials). We do not recommend the use of blue or pink

extruded polystyrene board as a bond breaker..

5. Gun the chinking over the backing material. Ideal sealant depth is half of the joint width, but no less than 1/4", nor more than 1/2".
6. Tool Log Jam to ensure good contact with the log surfaces, especially to the upper log; this will greatly aid adhesion.
7. All chinking products may occasionally "blister". To avoid blistering:
 - Do not apply in direct sunlight.
 - Protect fresh chinking from direct sunlight for 1-2 days after application with white plastic sheeting tacked over it.
 - For detailed information, read Sashco's Savvy Bulletin, "Preventing Blisters".

Application Surface Preparation

Best results are obtained when Log Jam is applied to wood that has been previously coated with a compatible and thoroughly cured stain. In fact, Log Jam has a Lifetime Limited Warranty when applied over any of Sashco's stains: Capture Log Stain/ Cascade staining system, High Sierra, Transformation, or Symphony Interior Clear Coat. Call us for details on this special warranty – the best in the industry!

If you select a different stain, make certain that it is compatible with Log Jam. If the stain is older but still intact, clean the log surfaces thoroughly to remove dirt, pollen, bird droppings and other surface contaminants.

The USDA Forest Products Laboratory and other researchers around the world have reported that surface wood exposed to sunlight for as little as 1-2 weeks can become significantly damaged and unsound, which may lead to premature adhesive failure of the stains or other coatings applied to it. It can also hurt Log Jam's (or any chinking's) adhesion to the surface. Once bare wood has been properly cleaned and prepped to remove unsound wood, stain should be applied as soon as possible. Follow with Log Jam chinking.

If a stain is applied over Log Jam, it will be tinted the stain color, but will be affected differently than the surrounding wood; therefore, test appearance before wide-spread use.

DATA TEC

A few coatings, especially those high in wax content or non-drying oils, may interfere with adhesion, whether they are applied before or after Log Jam. We advise against using Log Jam with such products. Contact Sashco if you have questions about your particular product.

Cold Weather Chinking

Log Jam can be applied in cold weather by following these instructions:

1. Make sure the log surfaces are above 40°F (4°C). Use a surface thermometer to double-check.
2. Keep the chinking at room temperature until ready to use.
3. Make sure the logs are free of frost.
4. Tent out the walls with clear plastic sheeting and keep them warm with heaters, then apply chinking.
5. Make sure there is air circulation so moisture doesn't form on the logs, causing a washout. Some venting up high will help with this problem.
6. Leave the tent intact day and night while chinking, and for 2 to 4 days after chinking is complete.
7. Finally, remove the plastic sheeting.

This should be sufficient to let the Log Jam skin over and slowly cure. Due to cold temperatures, it will take much longer than normal for the Log Jam to fully cure, but it will be fine if left undisturbed. Warn people to avoid pushing on for several weeks.

Methods of Application

When using 5-gallon pails, Sashco's patented Snorkler™ chink pump, grout bags or bulk loading guns may be used.

When using a cartridge, cut the spout at a 45° angle to desired bead size. In wider joints, multiple beads may need to be run until the entire joint is filled with chinking.

Tooling

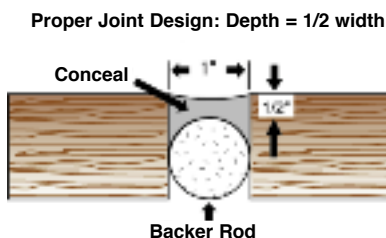
When applying Log Jam in temperatures below 70°F (21°C), a mixture of 1-part denatured alcohol to 2-parts water can be used for misting the chinking immediately prior to tooling. When the temperature is over 70°F (21°C), water alone will be sufficient. The techniques discussed below will give an aesthetically pleasing chinking line, as well as ensure a proper seal between the Log Jam and the log surface.

Tooling Log Jam on Round Logs: Work the material smooth with a damp foam brush, keeping a rag handy to clean up drips of water and excess Log Jam.

Tooling Log Jam on Square Logs: Use a putty knife to strike off excess Log Jam, making the joint level with the logs. Use a damp foam brush to smooth the material, keeping a rag handy to clean up drips and wipe off excess Log Jam.

New Construction Joint Design

The diagram shows the ideal type of joint design for all sealants—which allows for maximum sealant movement and favors cohesive failure (the best kind) if the movement is so extreme that failure cannot be avoided. Round backer rod is best, especially when substantial movement is expected, as with “green” logs. The chink line should be no less



than 15% of the log width. For example, with 10" diameter logs, the chink joint should be about 1 1/2" wide. If you choose to apply a smaller bead, expect more chinking repairs.

Ideal sealant depth is half of the joint width, but no less than 1/4", nor more than 1/2".

Restoration

Wood should be clean and stained, as discussed in the Fundamental Chinking Application Guidelines on page 1. Remove all loose mortar.

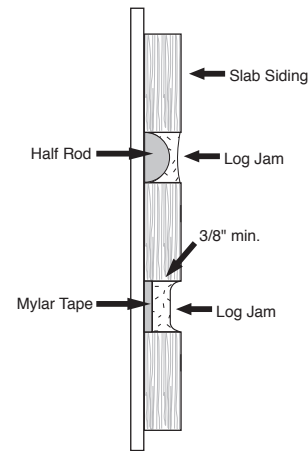
Bond-Breaker: When using Log Jam as a restoration chinking over old mortar, cover it with clear packing tape, which provides a surface Log Jam will not stick to. When movement occurs, the Log Jam will be free to stretch.

Tooling: Log Jam should be tooled to contact at least 1/2" of the bare wood surface on either side of the old mortar. This will ensure adequate adhesion.

Slab Siding

Slab siding can pose a special challenge due to the very rapid and large amount of movement it often exhibits after being installed. This movement shows up as extreme shrinkage, bowing and twisting, and can stress sealants more than logs do. To help reduce this problem, follow these additional tips with slab siding:

1. Use only dry slab siding (19% or less moisture content level, verified with a moisture meter)
2. Install the siding with heavy screws, not nails.
3. If applying over Tyvek™ house wrap, make sure the Tyvek™ is wrinkle free and tape over it with clear packing tape.
4. If the boards are thick enough, install Half Rod backer rod with the round portion of the profile facing out. This will provide for the best joint design. (Refer to the graphic.)



Warning: Blisters May Occur

Blisters are a common phenomenon with chinking and caulking products and are caused by a variety of things. Blisters appear as “bubbles” in the chink line and can vary widely in size.

To help prevent blisters, shield freshly chinked walls from the sun with white tarps. If this cannot be done, keep a close eye on the chinked wall for the first 24-48 hours. If a blister begins to develop:

- Pop the blister and gently push the material back into place
- 3 to 5 days later, apply a skim coat of Log Jam and tool to blend in.

For more detailed information on blisters, download or call us for a copy of the Sashco Savvy Bulletin entitled “Preventing Blisters in Chinking Material.”

Clean-up and Disposal

Dispose of Log Jam in accordance with local regulations. Do not dispose of in drinking water supplies. Hands, surfaces and equipment may be cleaned-up with water.

Round Logs



1. Install Grip Strip into caulk well of clean, stained logs.



2. Or, install backer rod into caulk well of clean, stained logs.



3. Gun Log Jam over the backer rod.



4. Lightly mist the Log Jam as needed.



5. Tool to ensure a tight seal to the top and bottom of the chink line.

Appalachian Style Logs



1. Start with logs that are stained with a coating compatible to Log Jam and have properly installed backer material.



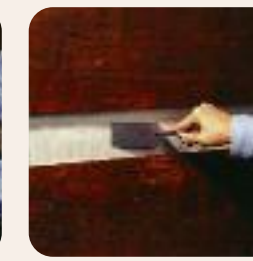
2. Tape the entire joint using polyester tape.



3. Gun Log Jam over the backer material.



4. Lightly mist the trowel as needed.

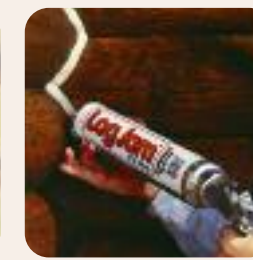


5. Tool to ensure a tight seal to the top and bottom of the chink line.

Corner Joints



1. Install backer rod into corners of clean, stained logs.



2. Gun Log Jam over the backer rod.



3. Lightly mist the Log Jam as needed.



4. Tool to ensure a tight seal.

**NOTE: Use a bond breaker (e.g. backer rod) when significant log movement could occur. When movement is known to be minimal (as with many older homes) using backer rod is still best, but usually less critical.*

Logs Move!

Occasionally, a small number of logs on any home may undergo extreme movement. This movement is a natural part of the logs moisture content adjusting to their new settings. Most logs, as they dry (or go through the repeated process of taking on and giving up moisture), will undergo moderate levels of stress on sealants applied to them. An occasional log will randomly and unpredictably twist, shrink or warp in response to these moisture changes, moving more than any sealant can possibly handle. When this extreme movement occurs, it will cause the sealant to fail either cohesively or adhesively.

If the failure is cohesive (sealant splits apart), then the repair is performed by simply cleaning the surfaces of the failed sealant and reapplying more. If the failure is adhesive (sealant pulls cleanly away from the substrate), then the sealant usually needs to be removed and completely redone.

First Aid

EYES: Immediately flush with large quantities of water for at least 15 minutes. If irritation persists, see a medical doctor.

SKIN: Wash with soap and water and rinse thoroughly. Wash contaminated clothing before use.

INHALATION: Remove to fresh air.

INGESTION: If large quantities are swallowed, DO NOT INDUCE VOMITING - seek medical help.

Warranty

Sashco warrants this product will substantially meet published specifications on the date of sale. If it fails to do so, return unused portion with original sales receipt for replacement or refund, at Sashco's sole option. These are purchaser's sole and exclusive remedies for any breach of warranty.

Purchaser must determine suitability of product for purchaser's specific needs and assumes all risk associated with its use.

Except as stated above there are no warranties for this product. **The foregoing express warranty is in lieu of all other warranties, express or implied, including without limitation, implied warranties of**