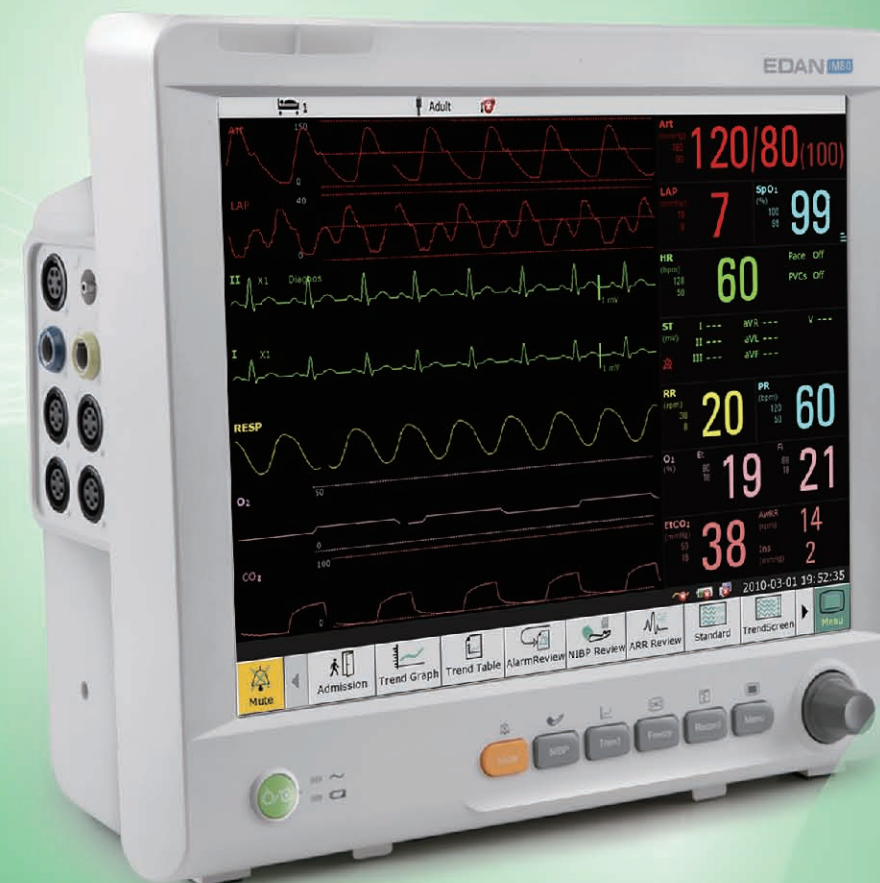




**iM80**  
Patient Monitor

# iM80 Patient Monitor



## About Edan

Edan is a healthcare company dedicated to improving the human condition around the world by delivering value-driven, innovative and high-quality medical products and services. For over 20 years, Edan has been pioneering a comprehensive line of medical solutions that address a broad range of healthcare practices including:

- Diagnostic ECG
- Patient Monitoring
- OB/GYN
- Ultrasound Imaging
- Point-of-Care Testing
- In-Vitro Diagnostics
- Veterinary

Healthcare professionals around the world depend on Edan's breakthrough medical technologies and outstanding customer support.



Edan Instruments, Inc. | 3/F-B, Nanshan Medical Equipments Park,  
1019# Nanhai Rd., Shenzhen | 518067 P.R. China  
+86.755.26898326 | www.edan.com.cn | info@edan.com.cn

© 2015 Edan Instruments, Inc. All rights reserved. Features and specifications are subject to change without prior notice. No reproduction, copy or transmission may be made without written permission.



ENG-PM-iM80-V2.0-20150323



# iM80

## Patient Monitor



15"

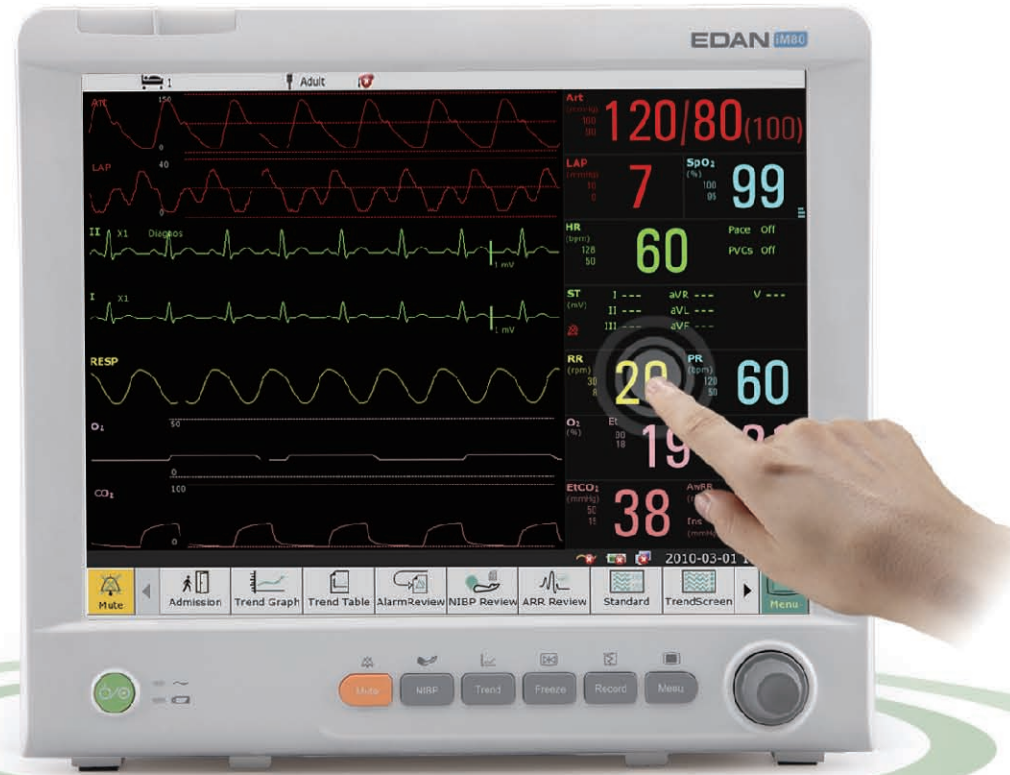
Maximum 13 Waveforms



Night Mode Pitch Tone



Thermal Recorder Shortcut Menu



### Standard Parameters:

- 3/5-lead ECG, HR, RESP, EDAN SpO<sub>2</sub>, EDAN NIBP, PR, 2-TEMP

### Optional Parameters:

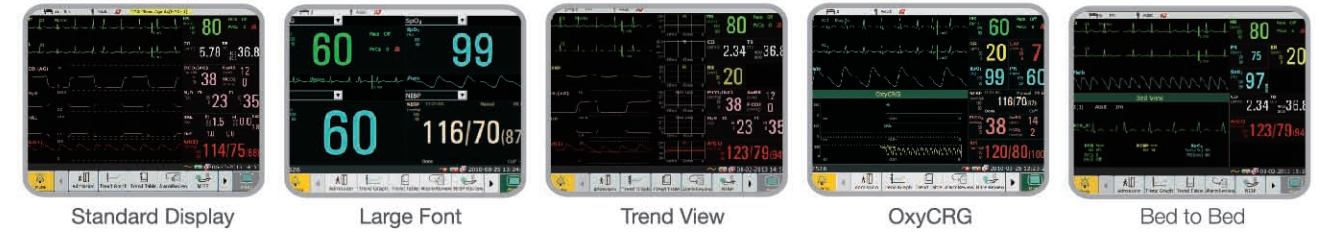
- 12-lead ECG, 4-IBP, C.O., Respiration CO<sub>2</sub> (Mainstream and Sidestream), MASIMO Anesthesia Gas/O<sub>2</sub>, Nellcor OxiMax™ SpO<sub>2</sub>, Omron® NIBP, EDAN G2 CO<sub>2</sub> (Sidestream)



### Reliable Algorithms

- iSEAP™ ECG algorithm optimized for arrhythmia detection, pacemaker detection, and HR measurement
- SEMIP® 12-lead diagnosis algorithm with 208 kinds of analysis results
- iMAT™ SpO<sub>2</sub> algorithm with outstanding motion resistance and low perfusion resistance performance
- iCUFFS™ NIBP algorithm optimized for cardiac patients, hypertensive patients, and neonatal patients

### Multiple Display Modes



### Respiration CO<sub>2</sub> (Mainstream/Sidestream) for Intubated/Non-Intubated Patients



#### EDAN G2 CO<sub>2</sub> (Sidestream)

- Superior water trap design for accurate monitoring
- iCARB™ algorithm with intelligent CO<sub>2</sub> pseudo wave identification technology
- Multiple sampling accessories as options for adult, child and neonate patients

#### Respiration CO<sub>2</sub> (Mainstream/Sidestream)

- Plug & Play
- Dehumidification tube instead of water trap design
- No need to calibrate on a regular basis
- Low sampling rate of 50 ml/min

### MASIMO Anesthetic Gas/O<sub>2</sub> (Mainstream/Sidestream)



- Unique Plug & Play module for mainstream anesthetic gas monitoring
- The no moisture sampling line design suitable for all clinical applications
- A stable low flow of 50ml/min for all types of patients



Nurse Call



VGA Output



Defib Proof & Sync



ESU Proof



Wall Mount



Rolling Stand

### Built-in Temporary Memory:

1200  
NIBP Measurement Review

120 h  
Trend Review

60  
Alarm Review

120 s  
Frozen Waveform