

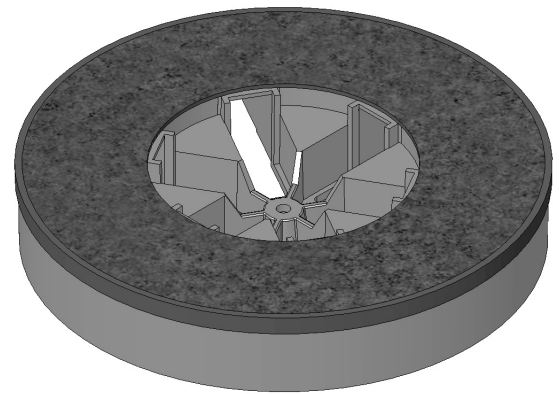


Model 653V

Easy-Spin 12V



Control panel lights inform the operator of the machine's current status



Horizontal Rotor
(standard)

- Full Horizontal Separation for Tubes up to 10mL (17mm x 100)
- Several Rotors to Choose From
- Precise Variable Speed Control
- ETL Compliant to ANSI/UL Standards

Why Horizontal Separation?

A horizontal rotor produces better separation with a tighter gel line, eliminating remixing and re-spins.

Horizontal Gel Line

10mL test tubes up to 17mm x 100mm
UL Std. 61010A-1 and UL Std. 61010A-2-20, CAN/CSA C22.2 No. 1010.1 and CAN/CSA C22.2 No. 1010.2.20

SPECIFICATIONS:

General Specifications for the Horizon, Model 653V Centrifuge

Overall Dimensions:	Height:	8.5 in. (23 cm)
	Width:	12.5 in. (32 cm)
	Depth:	14.8 in. (36 cm)
Max Acceleration Time:		15 seconds
Max Deceleration Time:		15 seconds
Weight:		27 lbs. (12.3 kg)
Centrifuge Motor:		1/2H.P. Brushless DC
Protection Breaker:		4 Amp. Re-settable
Timer:		Electronic, 1 to 30 minutes +/- 1%
Max. Power Requirements:		200 Watts
Voltage:		115 (+/- 10) Volts
Frequency:		50/60 Hz

NOTE: A 220/230V version is available. Consult your authorized dealer.

The Horizon Model 653V, Easy-Spin 12V, gives you all of the advantages of the Horizon product line - easy loading, horizontal separation and small size. The brushless DC motor provides extremely smooth operation and precise speed control. Select from several rotor options to suit your needs.



OPERATING FEATURES

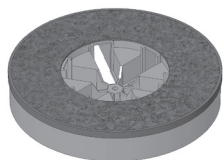
- **ELECTRONIC TIMER:** Selectable from 1 to 30 minutes (+/-1%)
- **BRUSHLESS DC MOTOR:** For smooth and quiet operation with no routine maintenance
- **ELECTRONIC BRAKING:** Reduces deceleration time to approximately 15 seconds
- **END-OF-RUN AUDIBLE INDICATOR:** Sounds once when the rotor has stopped to inform the operator that a cycle is completed
- **VARIABLE SPEED:** Precision variable speed control gives the operator the ability to select from 500 RPM to the max. variable rotor speed (optional, see table)
- **QUIET OPERATION WITH LOW VIBRATION:** Double-encased motor and Drucker's unique "stability mount" assure quiet performance and low out-of-balance vibration
- **COOL RUNNING:** Unique design allows for cool operation even under the heaviest workloads

SAFETY FEATURES

- **AUTOMATIC LID LOCK:** Centrifuge will not run with the lid open; lid cannot be opened while samples are spinning
- **POSITIVE LID LATCHING:** Firm mechanical latching of the lid prevents the escape of debris in case of breakage or an accident
- **WELDED STEEL CONSTRUCTION:** For strength and durability
- **CLEAR LID:** Offers safe observation and access for phototachometer

ROTOR / CARRIER OPTIONS

The model 653V is available with many different rotor and carrier packages to choose from. Select the package which best suits your needs. Consult your authorized dealer or The Drucker Company for additional information.



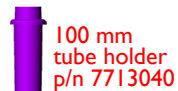
	PART NO.	# PLACES	MAX TUBE SIZE	SPEED RANGE ±10%	FORCE RANGE
12-Place Horizontal (Standard)	7786019				
100mm 2-Place tube carrier	7713030	12	17mm x 100mm	500 to 3,200 RPM	40 to 1,600 xg



20-Place Fixed-Angle	7786042				
75mm tube holder	7713043	20	17mm x 75mm	500 to 3,200 RPM	40 to 1,040 xg
100mm tube holder	7713040	20	17mm x 100mm	500 to 3,200 RPM	40 to 1,180 xg
125mm tube holder	7713044	20	17mm x 125mm	500 to 3,200 RPM	40 to 1,240 xg



6-Place 50mL Fixed-Angle	7786044				
50mL Fixed-angle Holder	7787051	6	34mm x 125mm	500 to 3,200 RPM	40 to 1,280 xg



100 mm tube holder
p/n 7713040



holder cap
p/n 7713011



75 mm tube holder
p/n 7713043



125 mm tube holder
p/n 7713044



50mL tube holder fixed-angle
p/n 7787051



13 x 75mm insert,
p/n 7713064

13 x 100 mm insert,
p/n 7713066



1.5 to 2mL tube Adapter
p/n 7713065



.5 to 1 ml tube Adapter
p/n 7713068

Standard Accessories



100 mm 2-place tube carrier
p/n 7713030



1" Cushion Spacer
p/n 1525


THE DRUCKER CO.
Providing Quality Centrifuges since 1932

Drucker, The Drucker Company, and Horizon are trademarks of The Drucker Company, Inc.
© The Drucker Company 2005-2011. All Rights Reserved

MADE IN THE USA

168 Bradford Drive, Port Matilda, PA 16870 U.S.A.
+1-814-692-7661 • Fax: +1-814-692-7662
www.druckercompany.com