



Operator's Manual

Model 642B • Laboratory Centrifuge

P/N 03-0-0002-0078 Rev. D

Table of Contents

Model Description	pg. 2
Supplied Equipment	pg. 2
Features	pg. 3
Specifications	pg. 3
Setup Location and Procedure	pg. 4
Operation	pg. 5
Load Balancing Instructions	pg. 5
Tube Holder Configurations	pg. 6
Rotor Removal and Installation	pg. 7
Care and Maintenance	pg. 8,9
Safety.....	pg. 9
Troubleshooting	pg. 9
Calibration and Ground Testing	pg. 9
Replacement Parts	pg. 10
Available Accessories	pg. 10

WARNING: For the safety of both the operator and service personnel, care should be taken when using this centrifuge if handling substances that are known to be toxic, radioactive or contaminated with pathogenic microorganisms. When Risk Group II materials are used, (as identified in the World Health Organization "Laboratory Bio-Safety Manual"), a Bio-Seal should be employed. In the event that materials of a higher risk group are being used, more than one level of protection must be provided. The use of flammable or explosive materials as well as those materials which have a vigorous chemical reaction is prohibited. For your safety and the durability of your machine, never transport or store centrifuge with tube holders inside machine.

Model Description:

The **Horizon Model 642B** is a continuous-duty, horizontal centrifuge. The unique rotor design allows for horizontal operation without the need for any extra parts beyond tube carriers. The unit is controlled by a mechanical timer settable from 1 to 30 minutes. Samples can be safely viewed through the transparent lid. In the event that the lid is opened during a run, the power to the motor is disconnected.

For warranty information, turn to page 12.

Supplied Equipment*:

The following items come standard with each Horizon centrifuge:

1. One (1) six-place horizontal rotor p/n 7786061
2. Six (6) 100mm tube holders p/n 7713031
3. Six (6) 75mm tube holders p/n 7713033

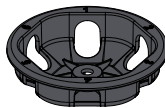
Optional Accessories: (not shown)

0.25" tube cushions, p/n 9150

1.0" tube cushions, p/n 1525



1.



2.



x 6

3.



x 6

* The rotor and rotor accessories are rated for a rotation frequency of 4,000 RPM.

Features:

- Swing–out horizontal rotor design incorporating a unique test tube holder that produces horizontally separated samples while requiring no additional parts
- Cool–Flow air flow design that prevents overheating of samples
- Heavy gauge steel construction for safety and durability
- Lid safety switch that prevents the centrifuge from operating unless the lid is closed and latched
- Removable rotor for easy cleaning
- Brushless permanent split capacitor AC motor
- Clear lid for safe observation of samples and optical calibration of speed

Specifications:

General Specifications for the Horizon, Model 642B Centrifuge

Nominal Speed (Horizontal):	3,380 (\pm 100) RPM
Nominal RCF (Horizontal):	1,590 (\pm 90) xg
Maximum capacity (Horizontal):	60 mL (6 x 10 mL)
Overall Dimensions (H x W x D):	8.75 in. x 11.75 in. x 14 in.
Centrifuge Motor:	1/30 HP, p.s.c. motor
Nominal Acceleration Time:	30 seconds
Protection Breaker:	4 Amp. re–settable
Timer:	mechanical, settable from 1 to 30 minutes, \pm 10%
Current Requirement:	1.5 Amps
Voltage Requirement:	115 (\pm 10) Volts
Frequency:	60 Hz
Weight:	11 lbs.

Any use other than those specified by the Manufacturer is explicitly prohibited.

Maximum sample density is 1.15 gms / mL, (water density = 1.0 gms / mL)

Setup Location:

1. Unpack the centrifuge and verify that all of the supplied equipment is present.
2. Choose a setup location which meets the following criteria:
 - a) A bench top clearance height of 20" is required in order to open the lid.
 - b) The clearance envelope is the space around the centrifuge which is required for safety. Choose a setup location which will allow for a clearance envelope of at least 24" x 24", (with the centrifuge at the center). No person or hazardous material shall be permitted in the clearance envelope during operation. The operator time within the envelope shall be limited to the time necessary for loading, unloading and centrifuge operation only.
 - c) Proper ventilation is necessary to prevent the overheating of samples as well as premature failure of the centrifuge. Choose an area which will allow unencumbered air flow.
 - d) The centrifuge is designed to secure to the operating surface by four suction feet. No adjustment is necessary for leveling the centrifuge, however, the surface should be flat and level.
 - e) **Be sure the outlet is always within reach as the line cord is the means of emergency disconnection!**

Initial Setup Procedure:

If any problems are found during the initial setup procedure, refer to the troubleshooting section on page 9. For further assistance, contact Drucker Diagnostics at 814-342-6205 or 814-692-7661.

1. Plug the centrifuge in to an approved electrical outlet. For electrical safety, the unit must always be properly grounded.
2. Spin the rotor by hand; check for free and level rotation. If the rotor does not spin freely, refer to page 9 on troubleshooting.
3. Place the six test tube holders inside the rotor (as shown to the right), and verify that they are seated properly.
4. Close the lid. Rotate the lid knob clockwise to its complete stop position.
5. Turn the centrifuge on by turning the timer to 10 minutes.
6. The test tube holders will slide up into the horizontal position and the unit will accelerate to full speed.
7. Listen to the sound of the centrifuge. A smooth whirring sound should be heard. If there are any loud or unusual sounds, stop the centrifuge by turning the timer to zero (0).
8. While the machine is running, try to turn the latch counterclockwise. Power should be cut to the motor. If the motor power is not cut when the lid latch is opened, contact Drucker Diagnostics for assistance.



Horizontal Rotor Shown

After the centrifuge has passed this procedure it is ready for operation.

Operation:

NOTE: Follow the initial setup procedure on page 4 before initial operation.

1. Plug the centrifuge into an approved 115 Volt A.C., 60 Hz. outlet.
2. Turn the latch counterclockwise and open the lid.

NOTE: If the desired rotor is not installed, go to page 7 for the rotor removal and installation procedure.

3. Insert cushions (if needed) into the tube holders for the tube size you are using. Refer to 'Tube Holder Configurations' (page 6) for assistance.
4. Place the test tube samples into the tube holders. Be sure to follow the rules for balanced loads.
5. Close the lid and turn the lid knob clockwise to its complete stop position.
6. Turn on the machine by turning the timer to the desired run time.
7. The centrifuge should begin to spin.
8. Once the timer reaches zero (0), power will be cut to the motor and the rotor will coast to a stop. Do not open the lid until the rotor has come to a complete stop.
9. Turn the lid knob counterclockwise and open the lid.
10. Remove the samples.
11. The centrifuge is immediately ready for operation.

BALANCED LOADS

Your centrifuge must contain a balanced load in order to work properly.

Use the following rules when loading the rotor.

Spinning balanced loads will extend the life of the machine and produce better results.

1. *Opposing tube holders must be identical and must contain the same cushion, or none at all.*
2. *Opposing tube holders must be empty or loaded with equally weighted samples.*
3. *If an odd number of samples is to be spun, fill a tube with water to match the weight of the unpaired sample and place it across from this sample.*

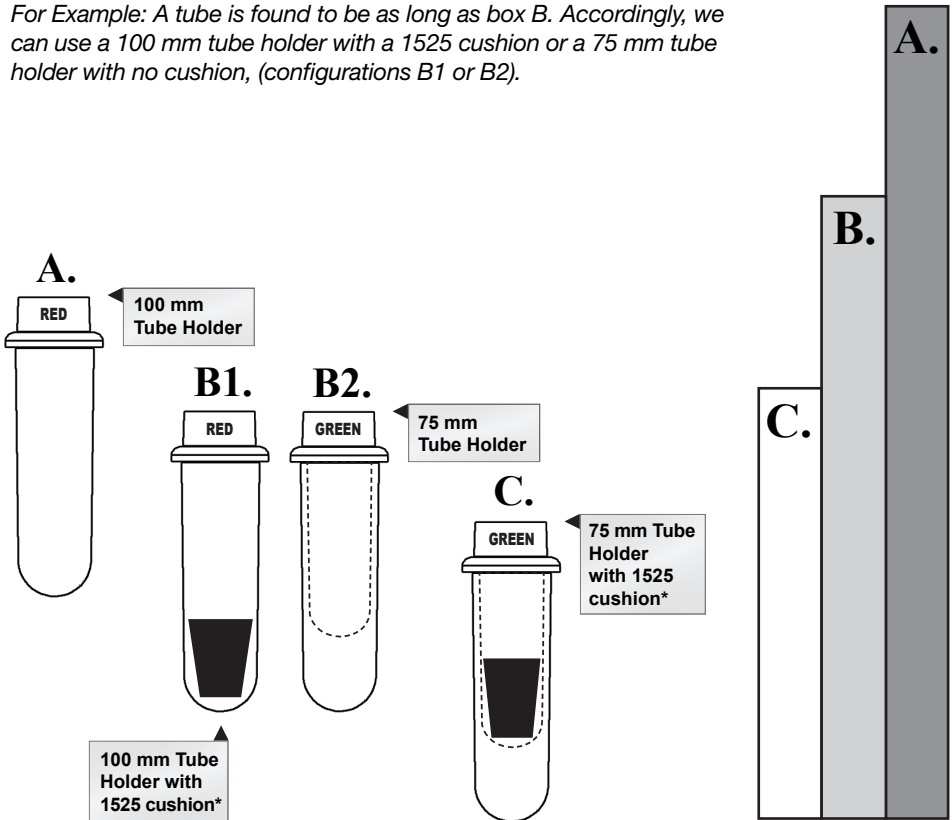
Tube Holder Configurations:

The Horizon is capable of spinning test tubes up to 17mm x 100mm with its horizontal rotor. Use the following chart and drawing to determine which tube holder and cushion combination should be used with your application.

DIRECTIONS:

1. Compare the tube to be spun with the three boxes shown below.
2. Find the box that most closely matches the tube's length. **NOTE:** The tube length with its stopper or cap must be shorter than the chosen box or the tube will not fit properly in the tube holder.
3. Match the letter from the chosen box with one of the configurations shown.

For Example: A tube is found to be as long as box B. Accordingly, we can use a 100 mm tube holder with a 1525 cushion or a 75 mm tube holder with no cushion, (configurations B1 or B2).



* This part is available as an accessory. Contact Drucker Diagnostics for assistance.

Before using any cleaning or decontamination methods except those recommended by the manufacturer, users should check with the manufacturer that the proposed method will not damage the equipment.

The rotor chamber, rotor and accessories shall be thoroughly cleaned using either isopropyl alcohol, soap and water, or bleach. The use of Fully/Partially Halogenated Hydrocarbons, Ketones, Esters and all other chemicals not prescribed by the manufacturer may cause damage to the rotor and tube holders and shall not be used.

Rotor Removal and Installation:

To remove the rotor:

1. Open the lid.
CAUTION: Unplug the centrifuge from the electrical outlet at this time to eliminate the possibility of electrical shock or other injury.
2. Remove the test tube holders.
3. Remove the nut in the center of the rotor by using a 1/2" nut driver (Not supplied).
4. The rotor is sitting on a cone-shaped adapter. Pull the rotor up and off of this adapter.

To install the rotor:

1. Place the rotor back onto the cone-shaped adapter. You may need to turn the rotor slightly to line it up properly.
2. The rotor should slide onto the rotor cone freely.
3. Once a proper fit has been achieved, replace the nut and turn it until it is hand-tight using a 1/2" nut driver.
4. Replace the tube holders and verify that they are seated properly, (as shown on page 4).
5. It is recommended that the initial setup procedures be performed to ensure that the rotor has been installed correctly and that no damage has been done to the centrifuge during either the rotor installation or possible rotor chamber cleaning. See page 4 for this procedure.

Care and Preventative Maintenance:

With proper care and maintenance your Horizon centrifuge will provide years of laboratory service. For proper care, the following steps should be taken:

1. **Provide Adequate Ventilation:** For cooling purposes, the Horizon draws in ambient air through the air intake cover on the top of the lid and exhausts this air in the rear of the base. The centrifuge should be placed on a hard smooth surface for good air circulation.
2. **Always Spin Balanced Loads:** Make certain that you are always spinning a balanced load. The Horizon has a unique counter balanced motor mounting design which, along with it's rubber suction feet, produces excellent vibration dampening. However, out-of-balance loads may break glass test tubes and may produce unsatisfactory separation results. Proper load balancing will improve sample separation and extend the life of the centrifuge. Refer to page 5 on balanced loads for additional information on balancing the load.
3. **Keep the Tube Holders Clean:** **NOTE:** Always follow the safety guidelines of your laboratory to properly clean up and/or dispose of materials in the event that a substance known to be potentially toxic, radioactive or contaminated with a pathogenic microorganism is spilt in or on the centrifuge. Small glass fragments left in the tube holder after a tube breakage may adhere to the next test tube inserted in that holder. When this tube is handled, these fragments may puncture protective gloves and lacerate the operator's fingers or hand. Remaining fragments may provide stress points on subsequent tubes and result in additional breakage. If a tube breakage occurs, carefully remove the tube holder. Properly dispose of the sample and tube fragments and thoroughly clean both the inside and outside of the tube holder. Insert a new tube cushion (if necessary) and replace the tube holder in the rotor.
4. **Motor and Electrical Maintenance:** The Horizon uses a brushless permanent split capacitor AC motor. It should not need servicing for the life of the centrifuge. The electrical components are selected for high reliability and should not need service.
5. **Keep the Rotor Chamber Clean:** Every six months, or whenever there is a tube breakage, (refer to the note in #3), it may be necessary to remove the rotor and clean the rotor chamber. Follow the instructions on page 9 to remove and reinstall the rotor.

CAUTION: Once the lid has been opened, unplug the line cord from the electrical outlet to eliminate the risk of electric shock during cleaning.

The rotor chamber, rotor and accessories shall be thoroughly cleaned using either isopropyl alcohol, soap and water, or bleach. The use of Fully/Partially Halogenated Hydrocarbons, Ketones, Esters and all other chemicals not prescribed by the manufacturer may cause damage to the rotor and tube holders and shall not be used.

Apply cleaning solutions with a towel or cloth. Do not submerge the centrifuge in water or other cleaning solutions as this will cause damage and void your warranty!

(cont.)

(Continued)

- 6. Tube Holder Replacement:** It is recommended that the tube holders be replaced after 24 months of use.
- 7. Remove Accessories Before Moving:** All tube holders, samples, and caps must be removed from the rotor chamber before transporting or storing the centrifuge to prevent damage and injury.


Safety: *The Model 614B complies with US, Canadian, and European Safety standards.*

Horizon Lid Safety Switch: The Horizon lid is secured to the top of the cabinet by a latching knob and pawl system. When the knob is rotated clockwise, the pawl grips the underside of the cabinet opening and prevents the lid from opening. A mechanical stop positions the pawl and prevents it from rotating completely. When rotated to the stop position, the pawl makes contact with a micro-switch mounted underneath the cabinet top. The lid safety switch prevents the centrifuge from operating while the lid is open.

Circuit Breaker: The Horizon is protected with a 4 Amp circuit breaker located at the rear of the machine mounted to the base. Any electrical short circuit will cause the breaker to cut power to the machine.

Calibration and Earth Ground Testing:

It is recommended that the top speed, ground continuity and line leakage be tested every two years for continued safe operation. Contact Drucker Diagnostics for further information or testing availability.

 **NOTE:**
The latch must be turned completely clockwise to its stop position in order for the centrifuge to operate.

Troubleshooting:

1. Problem: The rotor does not spin freely.

Solutions:

- Make sure nothing has fallen into the rotor chamber.
- If there is nothing obstructing the rotor, the rotor may be damaged.
- Contact Drucker Diagnostics for further assistance.

2. Problem: Excessive noise when the machine is running.

Solutions:

- Check to see that the load is balanced.
- Make sure that nothing has fallen into the rotor chamber.
- Make sure that the nut in the center of the rotor is tight.
- Have a technician test the motor and replace it if necessary.

3. Problem: The centrifuge does not run.

Solutions:

- Check the electrical outlet.
- Make sure the lid latch is turned completely clockwise to its stop position.
- Check the circuit breaker switch at the bottom left of the machine. If the switch is white, the breaker has tripped. Contact Drucker Diagnostics for further assistance.

Replacement Parts:

Part No.	Description
7724037	Foot, rubber
7751068	Switch, lid safety
7786061	Rotor, six-place horizontal
7735049	Motor, 1/30 H.P., 115 V.A.C. permanent split capacitor
7729006	Capacitor, 4uF, 250V A.C.
7751043	Circuit Breaker
7714101	Pawl, latch, lid
7714103	Knob, latch, lid
7724071	Hinge, friction
7732018	Seal, lid gasket
02-002-1-0011	Lid assembly
03-0-0003-0076	Front Panel Label

Available Accessories:

1" Tube cushion

p/n 1525



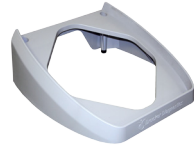
0.25" Tube cushion

p/n 9150



SmartView™ Platform

p/n 00-179-009-001



Shield caps

p/n 7713011



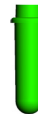
100mm tube holders

p/n 7713031



75mm tube holders

p/n 7713033



WARRANTY:

Drucker Diagnostics warrants that this centrifuge is free from defects in workmanship and parts for 2 years.



200 Shady Lane Drive, Suite 170 • Philipsburg, PA 16866

Phone: 814-342-6205 or 814-692-7661 • Fax: 814-692-7662 • www.druckercompany.com