

Mounting Washers and Locking Ring ①

Approximate Dimensions in Inches (mm)

Size	Description	Material	Thickness Dim. "A"	Inside Diameter Dim "B"	OD or Dimension Across Flats Dim. "C"	Dimension Across Corners Dim. "D"	Catalog Number
For 15/32 bushing	Locking ring	Zinc-plated steel	0.040 (1.02)	0.475 (12.07)	0.718 (18.24)	—	29-761-5

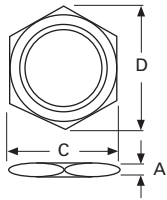
4

Dimensions

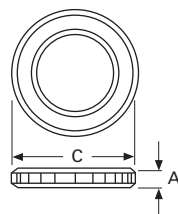
Approximate Dimensions in Inches (mm)

Mounting Hardware

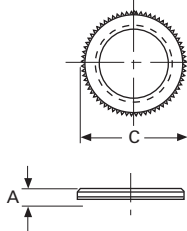
Hexagon Locknuts or Facenuts



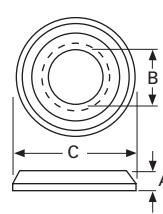
Knurled Facenut



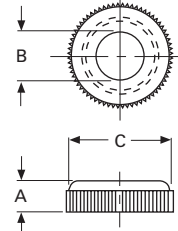
Knurled Nut with Shoulder



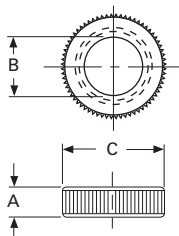
Chamfered Dress Nut
Catalog No. 15-994-2



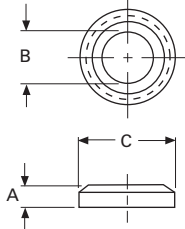
Knurled Dress Nut
Catalog No. 15-189-5



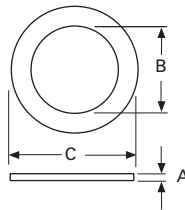
Knurled Dress Nut
Catalog No. 15-1048-3



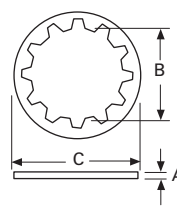
Dress Nut
Catalog No. 15-2523-4



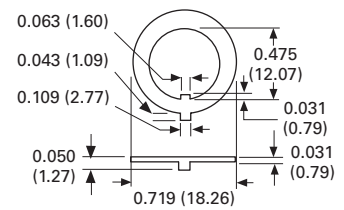
Plain Washer



Internal Tooth
Lockwasher



Locking Ring



Note

① Hardware items are sold for use with Eaton switches only.

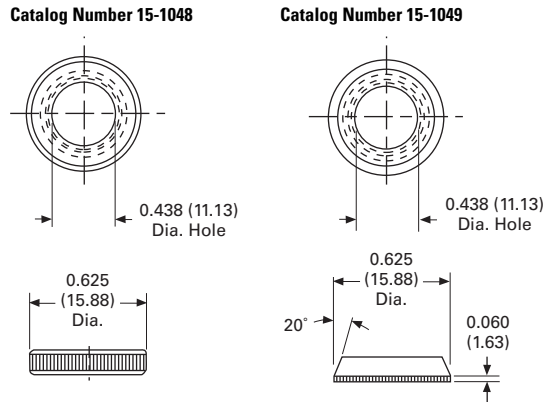
Decorator Facenuts

Product Selection ^①

Type	Color	Catalog Number
Knurled facenuts	Bright black	15-1048-3
	Bright clear	15-1048-7
Beveled facenuts	Bright black	15-1049-3
	Bright clear	15-1049-7

Dimensions

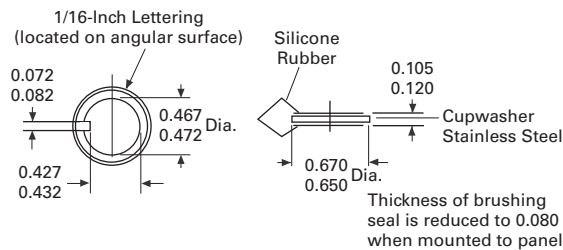
Approximate Dimensions in Inches (mm)



Panel Seal

- Prevents moisture and contaminants from entering panel enclosure
- Behind panel mounting
- Stainless-steel cup washer ensures proper seating of silicone rubber seal
- Seal withstands 20 psi water pressure
- Cat. No. 32-341

Dimensions—32-341



Replacement Terminal Screws

Product Selection

Screw Size	Catalog Number ^②
#5-40 x 1/8 in	11-1117
#5-40 x 5/32 in	11-26
#5-40 x 3/16 in binding head	811-7206
#5-40 x 1/4 in binding head	811-14
#6-32 x 3/16 in binding head	811-2
#6-32 x 1/4 in binding head	811-161
#6-32 x 1/4 in binding head	811-7248
#6-32 x 1/4 in pan head, brass	11-1893
#6-32 x 3/8 in binding head	811-129
#8-32 x 3/16 in binding head	11-1618
#8-32 x 1/4 in	11-1369
#8-32 x 1/4 in	811-408-2
#8-32 x 3/8 in binding head	11-1766
#8-32 x 3/8 in binding head	11-6074-4
#6-32 x 7/32 in binding head	11-6085-2

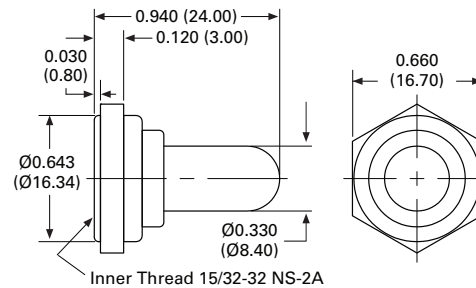
Toggle Boot

- Prevents moisture and contaminants from entering lever to bushing enclosure
- Front panel mounting
- Threaded mounting nut ensures proper assembly of silicon rubber boot
- Brass nut: 15/32-32 NS-2A
- Black color

Product Selection

SW1RY3030	Mounting Description	Color	Catalog Number
	Front panel mounting Molded in brass mounting nut (15/32-32 NS-2A) ensures proper assembly of silicon rubber boot	Black	SW1RY3030

Dimensions—15/32-32 NS-2A







Notes

- ① Decorator facenuts for 15/32 in bushing switches, 15/32-32 thread.
- ② Hardware items are sold for use with Eaton switches only.

Indicating Plates

Product Selection—Indicating Plates for 15/32-Inch Bushing Mounted Switches

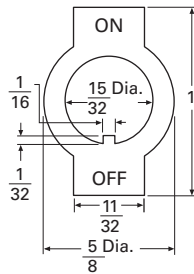
4

Keyway Location	Marking Opposite Keyway	Keyway Side	Material	Finish	Catalog Number		
 Keyway on bottom	ON	OFF	0.032 in steel	Plain	30-5632		
				Statuary bronze	30-5632-3		
				Burnished nickel	30-5632-4		
	RAD	PHO	0.032 in steel	0.032 in brass	Black cupric oxide ^①	30-2899-3	
					Statuary bronze	30-5632-7	
					Burnished nickel	30-5632-6	
	RUN	START	0.032 in steel	0.032 in steel	Burnished nickel	30-5632-11	
					HOT	COLD	30-5632-15
					HI	LOW	30-5632-16
					ON	STOP	30-5632-17
	FOR	REV	0.032 in steel	0.032 in steel	Burnished nickel	30-2899-2	
					AUTO	TEST	30-2899-6
					PUSH	START	30-2899-7
RUN					TEST	30-2899-9	
BLANK					BLANK	30-5632-8	
 Keyway on side	ON	OFF	0.032 in steel	Burnished nickel	30-5632-13		
	OFF	ON			30-2899-8		
 Keyway on top	T	B	0.032 in steel	Burnished nickel	30-5632-12		
	OFF	ON			30-5632-14		
	SET	RUN			30-2899-10		
	BLANK	RESET			30-2899-12		
 Keyway on top	O	I	0.032 in steel	Burnished nickel	30-5632-23		
	I	O			30-5632-19		

Dimensions

Approximate Dimensions in Inches

Indicating Plate



Note

^① White lettering.