



Add-A-Dog[®] Operating Guide

Please read this entire guide before beginning



Thank you for choosing SportDOG Brand™. Used properly, this product will help you train your dog efficiently and safely. To ensure your satisfaction, please review this operating guide thoroughly. If you have questions regarding this product's operation contact our Customer Care Center at 1-800-732-0144, or visit our website at www.sportdogbrand.com.

Table of Contents

Prepare the Collar Receiver	4
Fit the Collar Receiver	8
Program the Remote Transmitter	10
SD-400, SD-400S, SD-402, SD-400CAMO, SD-800, or SD-800CAMO	10
SD-1200	13
SD-1800 and SD-2000.....	16
SD-3200	19
Reset the Collar Receiver	22
Program the SD-400, SD-400S, SD-402, SD-400CAMO, SD-800 or SD-800CAMO Collar Receiver for Two or Three-Dog Operation	23
Program the SD-1200 Collar Receiver for Two-Dog Operation.....	24
Program the SD-1800 & 2000 Collar Receiver for Two-Dog Operation.....	25
Program the SD-1800 Collar Receiver for Three-Dog Operation	26
Program the SD-3200 Collar Receiver for Two-Dog Operation (Mode 2)	28
Program the SD-3200 Collar Receiver for Up to Four-Dog Operation (Mode 1).....	29

Prepare the Collar Receiver

Charge the Collar Receiver

1. Lift the rubber cover protecting the Charging Jack.
2. Insert the charger connector into the Charging Jack.
3. Plug the charger into a standard 110-volt AC wall outlet.
4. Charge the Collar Receiver for 24 hours for the first charge. Recharges take only 12 hours.
Note: The Receiver Indicator Light will flash after 12 hours of charging. For the first charge, continue to charge the Collar Receiver for an additional 12 hours.
5. When charging is completed, replace the rubber cover.

Charger connector placed
in Collar Receiver Charging Jack



Note: Your receiver may look slightly different.

To Turn the Collar Receiver On:

1. Press and hold the On/Off Button until the Receiver Indicator Light comes on and the Collar Receiver beeps 5 times.
2. Release the On/Off Button.

The Receiver Indicator Light will flash until the Collar Receiver is turned off. The flashing light indicates the Collar Receiver is ready to receive a radio signal from the Remote Transmitter.

Note: Your receiver may look slightly different.



On/Off Button

To Turn the Collar Receiver Off:

1. Press and hold the On/Off Button until the Receiver Indicator Light becomes solid and the Collar Receiver beeps 2 times.
2. Release the On/Off Button.

To extend the life between charging cycles, turn the Collar Receiver off when it is not in use.

Receiver Indicator Light

Collar Receiver Function	Indicator Light Response
Collar Receiver on – good battery	Flashes once per second
Collar Receiver on - low battery	Flashes once every 4 seconds
Continuous Stimulation button pressed	Solid in color
Momentary (Nick) Stimulation button pressed	Single flash

Rechargeable Battery

- The rechargeable Nickel Metal Hydride (NiMH) battery is not memory sensitive and does not require depletion before charging.
- The battery comes partially charged from the factory, but will require a full charge (24 hours) before the first use.
- Remember - Always keep batteries away from flame.
- When storing the unit for long periods, remember to regularly give battery a full charge (12 hours). This should be done once every 4 to 6 weeks.
- Excessive overcharging can shorten battery life. After initial charge, never leave the battery plugged in for more than 12 hours.
- If your equipment has not been charged for an extended period, you may experience a decrease in battery life the first few uses. Afterwards, the battery life will return to previous capacity levels.
- You should expect hundreds of recharge cycles from your battery. However, all rechargeable batteries lose capacity over time relative to the number of recharge

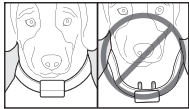
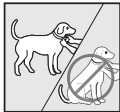
- cycles they experience. This is normal. If your operating time drops to half of the original life, contact the Customer Care Center to purchase a new battery.
- The battery should last for a period of 3-5 years. When a battery needs replacement, you can order a new pack by calling our Customer Care Center at 1-800-732-0144. Please do not open the Collar Receiver or Remote Transmitter until you have received the replacement.

Fit the Collar Receiver

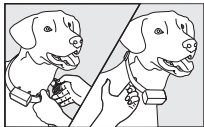
Important: The proper fit and placement of the Collar Receiver is important for effective training. The Contact Points must have direct contact with your dog's skin.

To ensure a proper fit, follow these steps:

1. With your dog standing, center the Collar Receiver so the Contact Points are underneath your dog's neck, touching the skin. If your dog has a long or thick coat, trim the hair around the Contact Points to ensure consistent contact.



2. The Collar Receiver should fit snugly, yet loose enough to allow one finger to fit between the strap and your dog's neck.
3. Allow your dog to wear the collar for several minutes, and then recheck the fit. Check the fit again as your dog becomes more comfortable wearing the Collar Receiver.



Care and Cleaning

To ensure the effectiveness of this product and the comfort and safety of your dog, check the fit of his collar frequently. This Guide describes proper collar fitting. If you notice that your dog is experiencing skin irritation, discontinue use of the collar for a few days. If the condition persists beyond 48 hours, see your veterinarian.

To prevent skin irritation from occurring:

- The Collar Receiver should not be worn for more than 8 hours out of every 24-hour period.
- Your dog's neck and the Contact Points must be washed weekly with a washcloth and mild hand soap, then rinsed thoroughly.

Program the Remote Transmitter

Note: The Remote Transmitter is factory set to mode 1. The mode of the Remote Transmitter can be changed to fit your type or style of training.

To change the mode on the SD-400, SD-400S, SD-402, SD-400CAMO, SD-800 or SD-800CAMO:

1. Referring to the table on pages 11 & 12, adjust the Intensity Dial to the mode you want to use.
2. Turn the Remote Transmitter over.
3. With a pen, depress and release the mode button. When the mode button is pressed, the Transmitter Indicator Light will be solid in color. When it is released, it will flash the mode selected.



For example, if mode 5 is desired, adjust the Intensity Dial to Level 5. Once the mode button has been depressed, the Transmitter Indicator Light will be solid, and once the mode button is released, the Transmitter Indicator Light will flash five times.

SD-400, SD-400S, SD-402, SD-400CAMO, SD-800 or SD-800CAMO Mode Chart

MODE	UPPER BUTTON FUNCTION	LOWER BUTTON FUNCTION	SIDE BUTTON FUNCTION	# OF DOGS
1	Continuous Stimulation with intensity level set by Intensity Dial	Momentary (Nick) Stimulation with intensity level set by Intensity Dial	Tone only Default setting from factory	1
2	Continuous Stimulation with intensity level set by Intensity Dial	Continuous Stimulation with intensity level set at the maximum (8)	Tone only	1
3	Continuous Stimulation with intensity level set by Intensity Dial	Continuous Stimulation two levels higher than the setting on the Intensity Dial	Tone only	1
4	Dog #1 Continuous Stimulation with intensity level set by Intensity Dial	Dog #2 Continuous Stimulation with intensity level set by Intensity Dial	Dog # 3 Continuous Stimulation with Intensity Level set by Intensity Dial	2 or 3

5	Continuous Stimulation with intensity level set to high end of reading on Intensity Dial	Continuous Stimulation with intensity level set to low end of reading on Intensity Dial	Tone only	1
6	Continuous Stimulation with intensity level set to high end of reading on Intensity Dial	Continuous Stimulation with intensity level set to low end of reading on Intensity Dial	Momentary (Nick) Stimulation with intensity level set by Intensity Dial	1
7	Continuous Stimulation with intensity level set by Intensity Dial	Tone with one-second-delayed Continuous Stimulation with intensity level set by Intensity Dial	Tone only	1

Note: Modes 1, 2, 3, 4 and 7 provide 8 levels of stimulation, which correspond to the setting on the Intensity Dial. Modes 5 and 6 provide more “increments” to choose from - a total of 16 levels of stimulation. For example, in mode 5 with the Intensity Dial set at 2, the bottom button provides level 3 of 16 and the top button provides level 4 of 16.

To change the mode on the SD-1200:

1. Remove the Remote Transmitter battery door.
2. Locate the small hole above the battery compartment.
3. Referring to the table on pages 14 & 15, determine the mode you want to use to train your dog or dogs.
4. Insert a paperclip into the hole to depress the mode button. The Transmitter Indicator Light will flash the current mode setting. Continue to hold the mode button and the Remote Transmitter will progress to the next mode.

For example, when the mode button is pressed the first time, the Indicator Light will flash once. Continue to press the mode button and the mode will progress to mode 2 and the Indicator Light will flash two times.



SD-1200 Mode Chart

MODE	UPPER BUTTON FUNCTION	LOWER BUTTON FUNCTION	# OF DOGS
1	Continuous Stimulation with intensity level set by the Intensity Dial	Momentary (Nick) Stimulation with intensity level set by the Intensity Dial	1
2	Continuous Stimulation set at the maximum level (8)	Continuous Stimulation with intensity level set by the Intensity Dial	1
3	Continuous Stimulation two levels higher than the setting on the Intensity Dial	Continuous Stimulation with intensity level set by the Intensity Dial	1
4	Tone Only	Continuous Stimulation and tone with intensity level set by the Intensity Dial	1

MODE	UPPER BUTTON FUNCTION	LOWER BUTTON FUNCTION	# OF DOGS
5	DOG #1 Momentary (Nick) Stimulation with intensity level set by the Intensity Dial	DOG #2 Momentary (Nick) Stimulation with intensity level set by the Intensity Dial	2
6	DOG #1 Continuous Stimulation with intensity level set by the Intensity Dial	DOG #2 Continuous Stimulation with intensity level set by the Intensity Dial	2
7	Tone Only	Continuous Stimulation with intensity level set by the Intensity Dial	1

To change the mode on the SD-1800 & 2000:

1. Referring to the table on pages 17 & 18, adjust the Intensity Dial to the mode you want to use.
2. Turn the Remote Transmitter over and remove the belt clip (if attached).
3. With a pen, depress and release the mode button. When the mode button is pressed, the Transmitter Indicator Light will be solid in color. When it is released, it will flash the mode selected.



Note: Your transmitter may look slightly different.

For example, if mode 5 is desired, adjust the Intensity Dial to Level 5. Once the mode button has been depressed, the Transmitter Indicator Light will be solid, and once the mode button is released, the Transmitter Indicator Light will flash five times.

SD-1800 & 2000: Mode Chart

MODE	UPPER BUTTON FUNCTION	LOWER BUTTON FUNCTION	SIDE BUTTON FUNCTION	TOGGLE SWITCH (UP/DOWN)	# OF DOGS
1	Continuous Stimulation with intensity level set by Intensity Dial	Momentary (Nick) Stimulation with intensity level set by Intensity Dial	Tone only	Dog 1/ Dog 2	2
2	Continuous Stimulation with intensity level set by Intensity Dial	Continuous Stimulation with intensity level set at the maximum (8)	Tone only	Dog 1/ Dog 2	2
3	Continuous Stimulation with intensity level set by Intensity Dial	Continuous Stimulation two levels higher than the setting on the Intensity Dial	Tone only	Dog 1/ Dog 2	2
4	Continuous Stimulation with intensity level set by Intensity Dial	Tone with one-second-delayed Continuous Stimulation with intensity level set by Intensity Dial	Tone only	Dog 1/ Dog 2	2

5	Continuous Stimulation with intensity level set to high end of reading on Intensity Dial	Continuous Stimulation with intensity level set to low end of reading on Intensity Dial	Tone only	Dog 1/ Dog 2	2
6	Momentary (Nick) Stimulation with intensity level set to high end of reading on Intensity Dial	Momentary (Nick) Stimulation with intensity level set to low end of reading on Intensity Dial	Tone only	Dog 1/ Dog 2	2
Important: Mode 7 for SD-1800 ONLY.					
7	Dog 1	Dog 2	Dog 3	Continuous/ Momentary (Nick)	3

Note: Modes 1, 2, 3, 4 and 7 provide 8 levels of stimulation, which correspond to the setting on the Intensity Dial. Modes 5 and 6 provide more “increments” to choose from - a total of 16 levels of stimulation. For example, in mode 5 with the Intensity Dial set at 2, the bottom button provides level 3 of 16 and the top button provides level 4 of 16.

Program the SD-3200 Remote Transmitter

Note: The Transmitter is factory set to Mode 1. The Mode of the Remote Transmitter can be changed to fit your type or style of training.

To change the mode:

1. Referring to the table on page 21, adjust the Intensity Dial to the Mode you want to use.
2. Following the same instructions for replacing/inserting the battery, remove the panel from the opposite side of the knob and toggle switch.
3. Depress and release the Mode button. When the Mode button is pressed, the Transmitter Indicator Light will be solid in color. When it is released, it will flash the Mode selected.

For example, if Mode 2 is desired, adjust the Intensity Dial to Level 2. Once the Mode button has been depressed, the Transmitter Indicator Light will be solid, and once the Mode button is released, the Transmitter Indicator Light will flash 2 times.

Note: Continuous Stimulation will transmit for no more than 8 continuous seconds no matter how long the button is pressed. To reactivate, release and repress the button.

Mode Button



SD-3200: Mode Chart

MODE	UPPER BUTTON FUNCTION	LOWER BUTTON FUNCTION	TOGGLE SWITCH (LEFT/RIGHT)	# OF DOGS
1	Continuous Stimulation with intensity level set by Intensity Dial – Dog 1 or 3	Continuous Stimulation with intensity level set by Intensity Dial – Dog 2 or 4	Dog 1-2/ Dog 3-4	1-4
2	Continuous Stimulation with intensity level set by Intensity Dial	Momentary (Nick) Stimulation with intensity level set by Intensity Dial	Dog 1/ Dog 2	1-2

Reset the Collar Receiver

To reset the Collar Receiver to work with a new Remote Transmitter or to reprogram a new Collar Receiver to work with your existing Remote Transmitter:

1. Turn the Collar Receiver off.
2. Press and hold the On/Off Button until the Receiver Indicator Light comes on and the Collar Receiver beeps 5 times.
3. After the Receiver Indicator Light has turned off, release the On/Off Button. If the On/Off Button is released too early, the Receiver Indicator Light will begin flashing. If this occurs, start over and repeat the process.
4. Press and hold the upper button on the Remote Transmitter until the Receiver Indicator Light flashes 5 times. You may need to hold both units 2-3 feet from each other before this occurs. Once the Receiver Indicator Light has flashed five (5) times, the Collar Receiver has been reset and will begin flashing. If the Receiver Indicator Light does not flash 5 times, start over and repeat the process.

Program the SD-400, SD-400S, SD-402, SD-400CAMO, SD-800, or SD-800CAMO Collar Receiver for Two or Three-Dog Operation

1. Program the Remote Transmitter to mode 4.
2. Program the first Collar Receiver.
 - A. Turn the Collar Receiver off.
 - B. Press and hold the On/Off Button until the Receiver Indicator Light comes on and the Collar Receiver beeps 5 times.
 - C. After the Receiver Indicator Light has turned off, release the On/Off Button. If the On/Off Button is released too early, the Receiver Indicator Light will begin flashing. If this occurs, start over and repeat the process.
 - D. Press and hold the **Upper Button** on the Remote Transmitter until the Receiver Indicator Light flashes 5 times. You may need to hold both units 2-3 feet from each other. If the Receiver Indicator Light does not flash 5 times, start over and repeat the process.

3. Program the second Collar Receiver using **A.** through **D.** from step 2, but using the **Lower Button** in place of the Upper Button.
4. Program the third Collar Receiver using **A.** through **D.** from step 2, but using the **Side Button** in place of the Lower Button.

Program the SD-1200 Collar Receiver for Two-Dog Operation

1. Program the Remote Transmitter to Mode 5 or 6.
2. Program the first Collar Receiver.
 - A.** Turn the Collar Receiver off.
 - B.** Press and hold the On/Off Button until the Receiver Indicator Light comes on and the Collar Receiver beeps 5 times.
 - C.** After the Receiver Indicator Light has turned off, release the On/Off button. If the On/Off Button is released too early, the Receiver Indicator Light will begin flashing. If this occurs, start over and repeat the process.
 - D.** Press and hold the **Upper Button** on the Remote Transmitter until the Receiver

Indicator Light flashes 5 times. *Note: In mode 5, press and release the **Upper Button** repetitively until the Receiver Indicator Light flashes 5 times.* You may need to hold both units 2-3 feet from each other. If the Receiver Indicator Light does not flash 5 times, start over and repeat the process.

3. Program the second Collar Receiver using **A.** through **D.** from step 2, but using the **Lower Button**.

Program the SD-1800 & 2000 Collar Receiver for Two-Dog Operation

1. Program the Remote Transmitter to desired mode.
2. Flip the toggle switch **up** to program the first Collar Receiver.
 - A.** Turn the Collar Receiver off.
 - B.** Press and hold the On/Off Button until the Receiver Indicator Light comes on and the Collar Receiver beeps 5 times.
 - C.** After the Receiver Indicator Light has turned off, release the On/Off Button. If the On/Off Button is released too early, the Receiver Indicator Light

will begin flashing. If this occurs, start over and repeat the process.

D. Press and hold the Upper Button on the Remote Transmitter until the Receiver Indicator Light flashes 5 times. *Note: In mode 6, press and release the Upper Button repetitively until the Receiver Indicator Light flashes 5 times.* You may need to hold both units 2-3 feet from each other. If the Receiver Indicator Light does not flash 5 times, start over and repeat the process.

3. Program the second Collar Receiver using **A.** through **D.** from step 2, but with the toggle switch in the **down** position.

SD-1800: Toggle set to Orange/Top for Dog 1 and Black/Bottom for Dog 2



Program the SD-1800 Collar Receiver for Three-Dog Operation

1. Program the Remote Transmitter to Mode 7.

2. Flip the toggle switch **up** to the orange position.
3. Program the first Collar Receiver:
 - A. Turn the Collar Receiver off.
 - B. Press and hold the On/Off Button until the Receiver Indicator Light comes on and the Collar Receiver beeps 5 times.
 - C. After the Receiver Indicator Light has turned off, release the On/Off Button. If the On/Off Button is released too early, the Receiver Indicator Light will begin flashing. If this occurs, start over and repeat the process.
 - D. Press and hold the **Upper Button** on the Remote Transmitter until the Receiver Indicator Light flashes 5 times. You may need to hold both units 2-3 feet from each other. If the Receiver Indicator Light does not flash 5 times, start over and repeat the process.
4. Program the second Collar Receiver using **A.** through **D.** above, but using the **Lower Button** in place of the Upper Button.
5. Program the third Collar Receiver using **A.** through **D.** above, but using the **Side Button** in place of the Upper Button.

Program the SD-3200 Collar Receiver for Two-Dog Operation (Mode 2)

SportDOG Collar Receivers can be set to respond to either the left or right toggle switch position. A SportDOG Add-A-Dog[®] receiver must be purchased to train a second dog in two-dog mode.

1. Program the Remote Transmitter to mode 2.
2. Flip the toggle switch to the left position to program the first Collar Receiver.

A. Turn the Collar Receiver off.

B. Press and hold the On/Off Button. The Receiver Indicator Light will come on, then turn off in 4-5 seconds. If the On/Off Button is released too early, the Receiver Indicator Light will begin its normal flashing. If this occurs, start over and repeat from **A**.

Set toggle left for Dog 1 and right for Dog 2



C. After the Receiver Indicator Light has turned off, release the On/Off Button.

D. Press and hold the Upper Button on the Remote Transmitter until the Receiver Indicator Light flashes 5 times. You may need to hold both units 2-3 feet from each other. If the Receiver Indicator Light does not flash 5 times, start over and repeat from **A.**

3. Program the second Collar Receiver the same way using **A.** through **D.** from step 2, but with the toggle switch set to the right position.

Program the SD-3200 Collar Receiver for Up to Four-Dog Operation (Mode 1)

SportDOG Add-A-Dog[®] Receivers must be purchased to train additional dogs.

1. Program the Remote Transmitter to Mode 1.

2. Flip the toggle switch to the left position.
3. Program the first Collar Receiver:
 - A. Turn the Collar Receiver off.
 - B. Press and hold the On/Off Button. The Receiver Indicator Light will come on, then turn off in 4-5 seconds. If the On/Off Button is released too early, the Receiver Indicator Light will begin its normal flashing. If this occurs, start over and repeat from A.
 - C. After the Receiver Indicator Light has turned off, release the On/Off Button.
 - D. Press and hold the Upper Button on the Remote Transmitter until the Receiver Indicator Light flashes 5 times. You may need to hold both units 2-3 feet from each other. If the Receiver Indicator Light does not flash 5 times, start over and repeat from A.
4. Program the second Collar Receiver using A. through D. above, but using the **Lower Button** in place of the Upper Button.
5. Flip to the toggle switch to the right position.
6. Program the third and fourth Collar Receivers using A. through D. above, for both the **Upper** (Dog 3) and **Lower** (Dog 4) buttons.

Caution

The Y-plug adapter works with SportDOG Brand™ rechargeable Transmitters and with SR200-I Series Receivers printed with “SWR/2”. DO NOT use to recharge the SR200-I Series Receivers printed with “SWR/1”.

Radio Systems Corporation
10427 Electric Avenue
Knoxville, TN 37932
1-800-732-0144
www.sportdogbrand.com
400-643/4

Protected by Patent #7,017,524

©Copyright 2006, Radio Systems Corporation