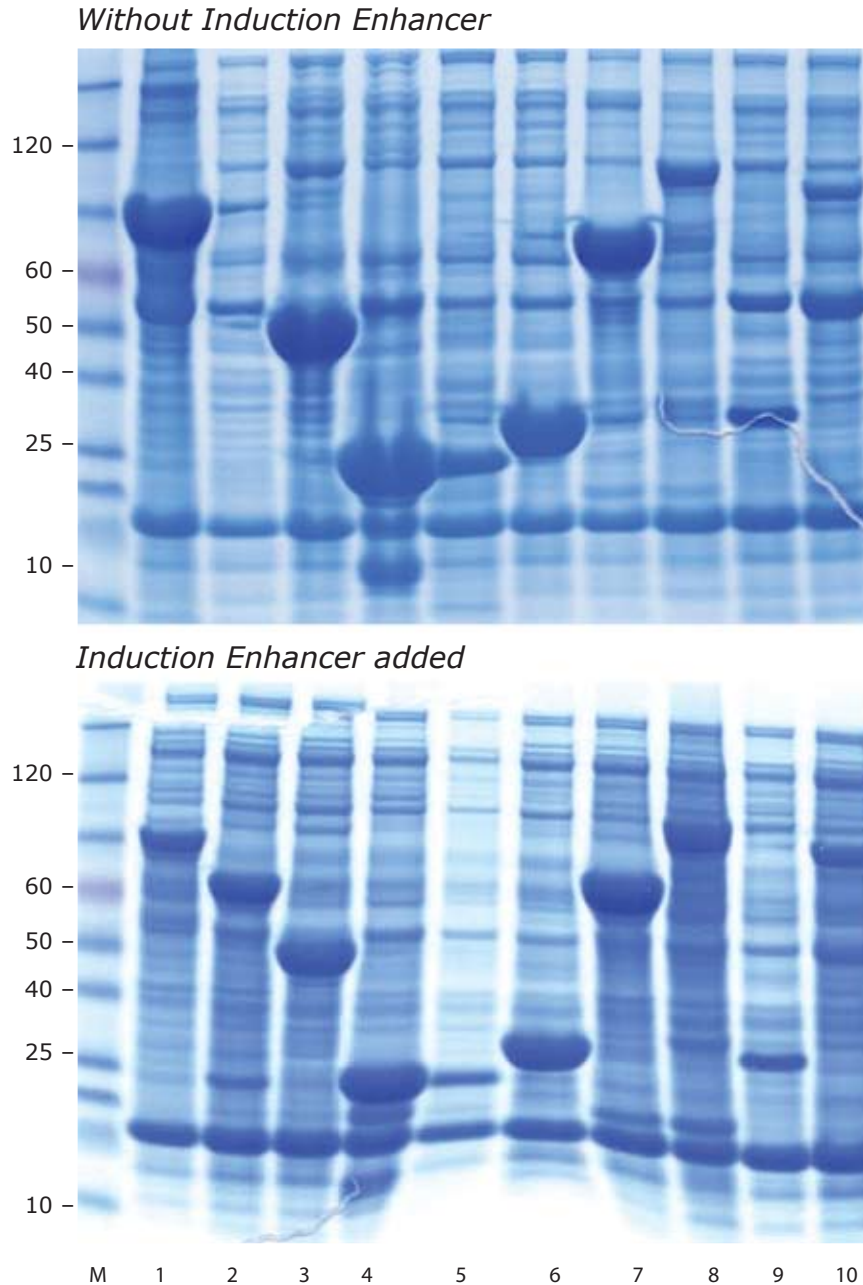


Figure 2. Comparison of protein expression from pET vectors in BL21 Gen-X E. coli with and without addition of the Gen-X™ Induction Enhancer



Cells were grown and induced as described in Figure 1. Additionally, 220 ul of the 10X Gen-X Induction Enhancer was added at the time of IPTG addition; downstream processing was the same.

For many constructs, addition of the Gen-X Induction Enhancer significantly reduced background protein expression. This is because the Gen-X Induction Enhancer further reduces the growth rate of the cells. In some instances, there is a decrease in absolute recombinant protein expression; however, the net result is a protein yield of higher purity due to the relatively lower background. In other cases, the Gen-X Induction Enhancer is essential for abundant target protein expression; for example, in Lane 2, the 60kDa recombinant protein was observed only in the BL21 Gen-X cells with the Gen-X Induction Enhancer, while in lane 8, the induction enhancer was responsible for the increased expression of the 69 kDa protein.