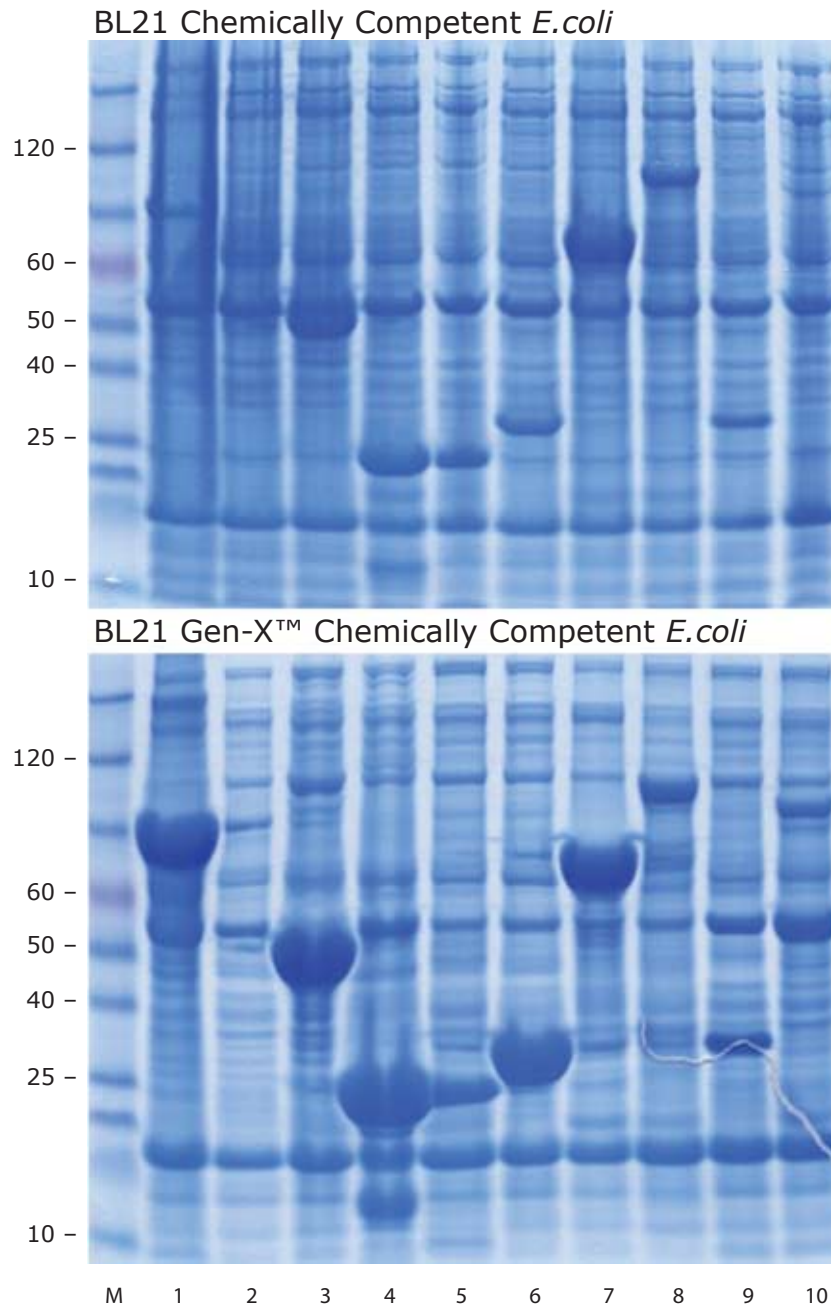


Figure 1. Comparison of protein expression from pET vectors in BL21 Gen-X™ and standard BL21 (DE3) E. coli cells.



Ten 2 ml cultures of standard BL21 (DE3), each containing a different protein expression construct, were grown at 37°C in LB and induced with 1 mM IPTG at  $OD_{600} = 0.4$ . Cells were then incubated overnight and 1 ml was harvested. Concurrently, 2 ml cultures of BL21 Gen-X containing the same ten protein expression constructs were grown at 37°C in M9 minimal media and induced with 1 mM IPTG at the same OD. Cells were incubated overnight and 1 ml harvested. For both strains, pellets were suspended in 100  $\mu$ l of lysis buffer, and 10  $\mu$ l was electrophoresed on 4-12% polyacrylamide gel

In lanes 1,3,4,5,6,8,9, and 10, the quantity of recombinant protein obtained from the BL21 Gen-X cells was considerably greater and the background of endogenous *E. coli* proteins significantly lower.