

CUSTOMER INFORMATION

Customer name _____ Date _____ Shipping Address _____
 Phone # _____
 Email _____

SUIT TYPE ONE PIECE TWO PIECE JACKET

BODY TYPE Small Medium Large X-Large



STANDARD 1 LAYER SFI 3.2A/1 \$599.95
Design Fee- \$100.00
JACKET PRICE \$350.95
 295 *g/m² FR Cotton / *TPP 10

STANDARD 2 LAYER SFI 3.2A/5 \$1399.95
Design Fee- \$100.00
JACKET PRICE \$650.95
 250 *g/m² Meta Para Aramid Outer Layer
 180 *g/m² 100% Nomex Inner Layer
 430 *g/m² Total Suit Weight / *TPP 22.6

PREMIUM 1 LAYER SFI 3.2A/1 \$649.95
Design Fee- \$100.00
JACKET PRICE \$450.95

This material is only available in Black, Grey and White
 240 *g/m² FR Breathable Cotton / *TPP 8.26

PREMIUM 2 LAYER SFI 3.2A/5 \$1499.95
Design Fee- \$100.00
JACKET PRICE \$750.95

150 *g/m² 100% Nomex Outer Layer
 180 *g/m² 100% Nomex Inner Layer
 330 *g/m² Total Suit Weight / *TPP 21.6

Standard Suit Options Included In Price - ALL INCLUSIVE

SFI 1 Auto Racing Suit

Unlimited Embroidery

- Custom Sizing
- 360 Degree Arm Gussets
- Lower Back Stretch Panel
- Crotch Stretch Panels
- Choice of Quilting Stitch Color
- Choice of Leg Design
- Choice of clooar design
- Standard Cotton FR Proban Outer Shell

SFI 5 Auto Racing Suit

Unlimited Embroidery



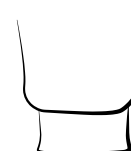
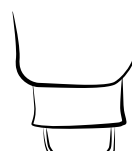
- Custom Sizing
- 360 Degree Arm Gussets
- Lower Back Stretch Panel
- Crotch Stretch Panels
- Premium Knit Nomex Inner Lining
- Choice of Quilting Stitch Color
- Choice of Leg Design (Boot Cut or Cuffed)
- Standard Meta Para - Aramid Nomex Outer Shell
- Fluorescent colors included in price

***TPP Rating-** Divide this number by two to determine the number of seconds before a second degree burn occurs ***g/m²** Grams per square meter refers to the weight of the suit

Additional Add Ons

- STRETCH PANELS (Arm Gusset, Back and Crotch panels are included)** Side Stretch Panels (+\$50)
- Arm Restraint D Rings (+\$50) (2 D rings per arm) Raceceiver Pocket (+\$25) Passport Pocket (+\$25)
- SAFETY X INNER LINER (+\$100) ADDS +70 GSM IN WEIGHT / ADDS TPP +7.5 (Upgrade on 2 layer suits only)

Legging Styles

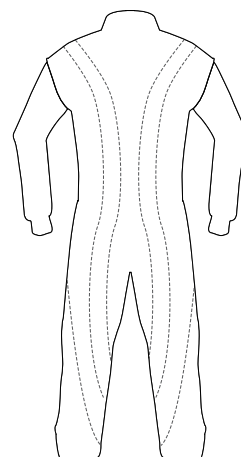
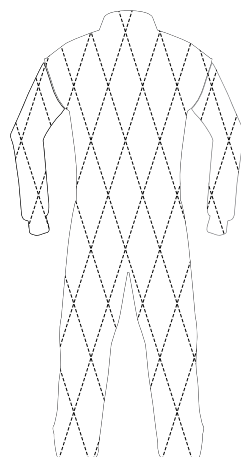
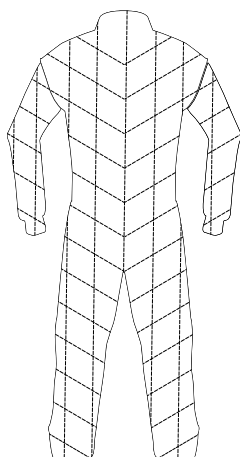
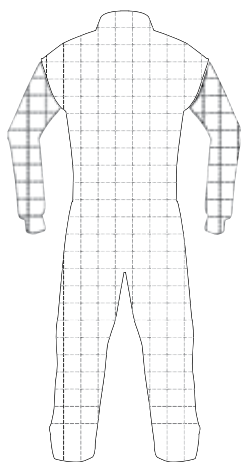
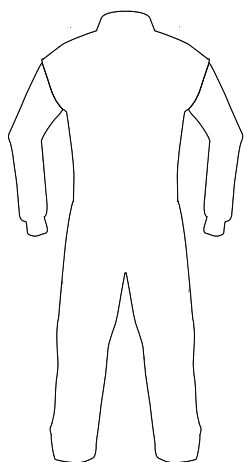
- 
- 
- 
- 
- Boot Cut Boot Cut w/Hooves Euro Cut Euro Cut w/Elastic

Collar Styles

- 
- 
- 
- Large w/ Velcro Banded V with Velcro Tapered V

Stitching Styles

Stitching color will match the main color of the suit unless otherwise specified.



No Stitching

Box Stitching

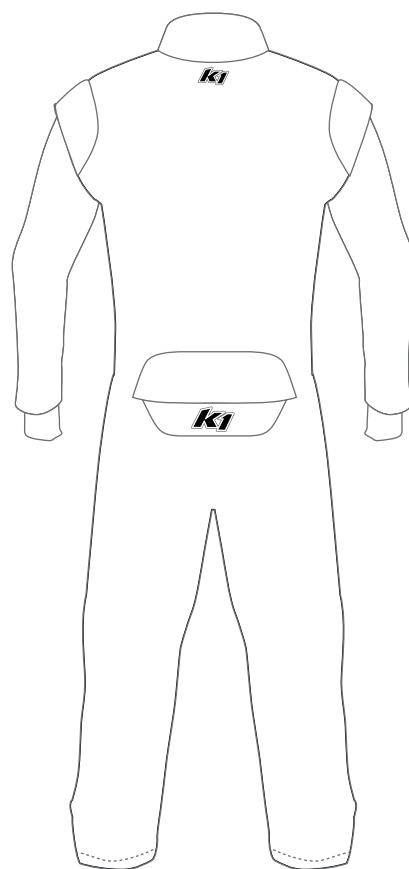
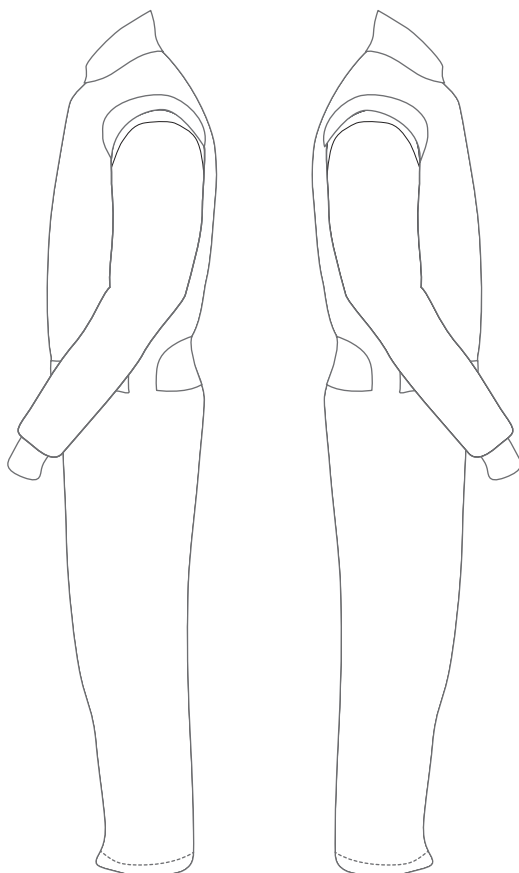
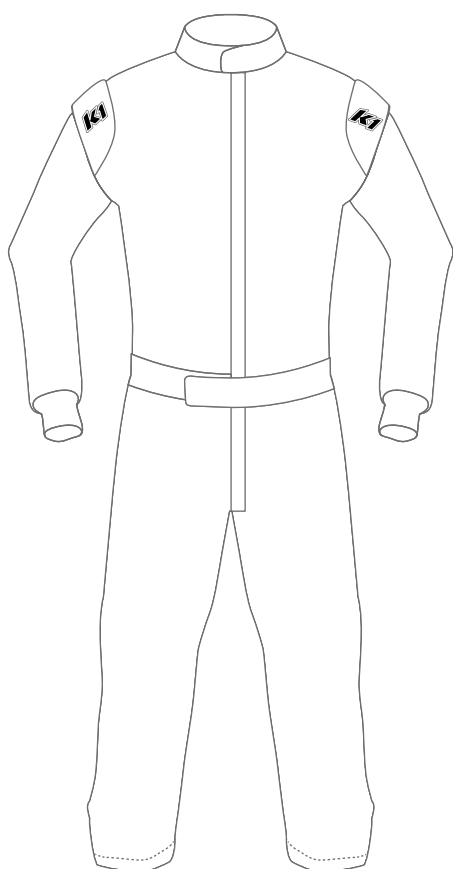
Diagonal Stitching

Diamond Stitching

Custom Stitching

(Single layer suit only)

Logo Placement

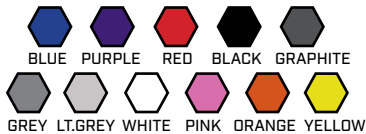


Write the name of the logo on the line and write the corresponding number inside a drawn box the size you would like the logo to be. If there are more than 6 per side, write the name of the logo on the drawing.

FRONT	LEFT SIDE	RIGHT SIDE	BACK
1. _____	1. _____	1. _____	1. _____
2. _____	2. _____	2. _____	2. _____
3. _____	3. _____	3. _____	3. _____
4. _____	4. _____	4. _____	4. _____
5. _____	5. _____	5. _____	5. _____
6. _____	6. _____	6. _____	6. _____

Suit Design Options

Standard 1 layer suit colors



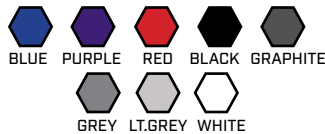
Premium 1 layer suit colors

Breathable fr cotton only available in:



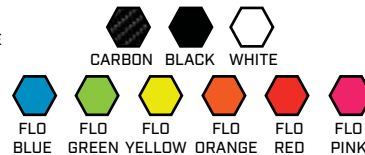
Standard 1 layer suit colors may be used as accent color options but it will be the heavier material

Standard 2 layer suit colors



Premium 2 layer suit colors

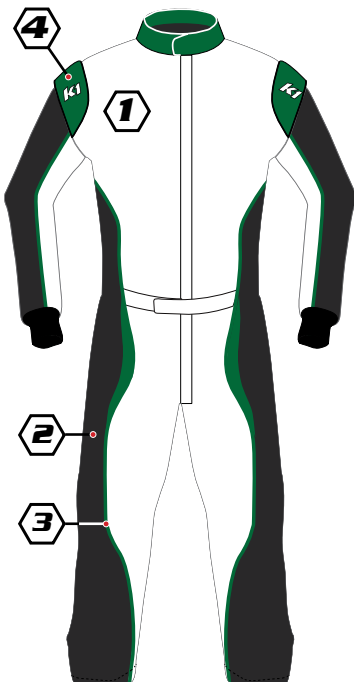
All standard colors plus:



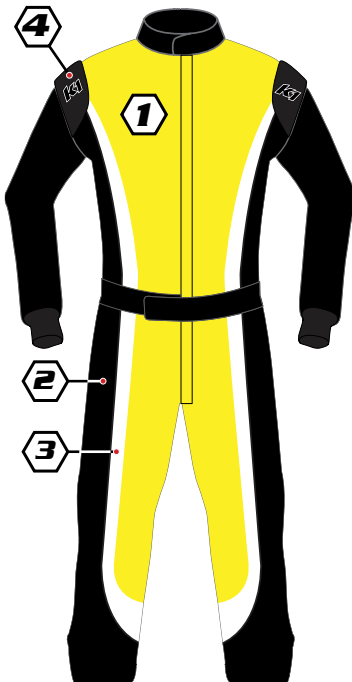
Colors shown on suits are for reference only and are to be chosen in the space below



○ Design #1



○ Design #2



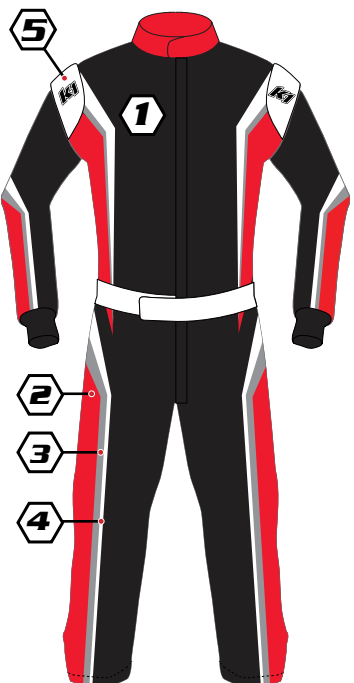
○ Design #3



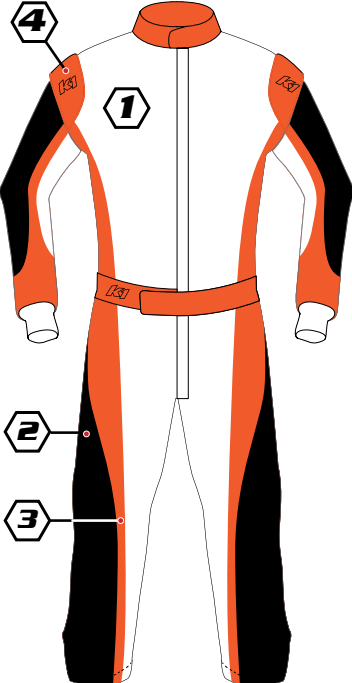
○ Design #4



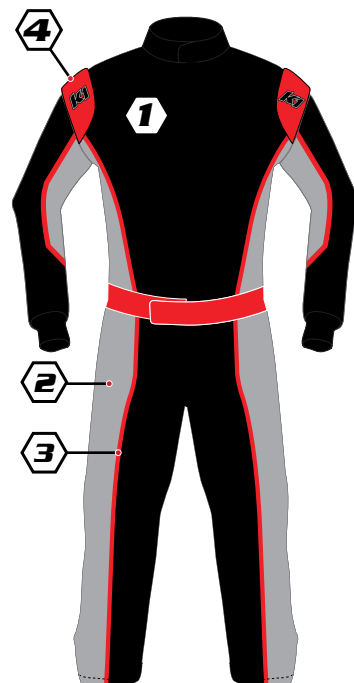
○ Design #5



○ Design #6



○ Design #7



○ Design #8

COLORS

Color 1: _____
Color 2: _____
Color 3: _____
Color 4: _____
Color 5: _____

PIPING COLOR

Collar: _____
Epaulets: _____
Belt: _____

ADDITIONAL INFO

Name on belt _____
Flag on belt _____
Wrist cuff color _____
Collar color _____

