

Door / Window Sensor Battery Installation – Sercomm XHS2-SE UEI XHS2-UE Tyco XHS2-TY

What You'll Need

- Sercomm XHS2-SE, UEI XHS2-UE, or Tyco XHS2-TY Door / Window Sensor
- One CR2450 battery
- Double-sided tape (optional)

How to Install the Battery

Before proceeding, please be sure that your system is disarmed. Working on devices while the system is armed can generate false alarms.

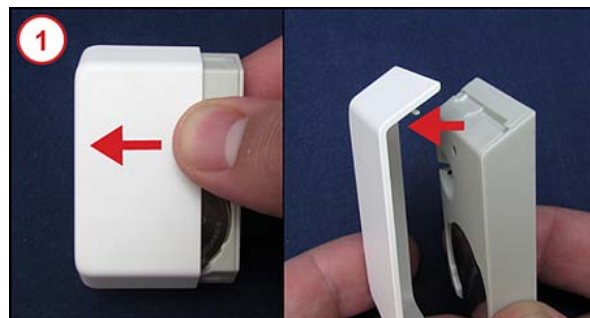
Did You Know? You may want to have some double-sided tape on hand if you need to remove your Sensor from the wall to install a battery. Cut the tape to size and reattach your Sensor if the existing adhesive fails to hold it in place.

Is This Your Sensor? Make sure that your Sensor looks like the one in the image. If it does, you have the right document to find out how to install a battery in your Sensor.

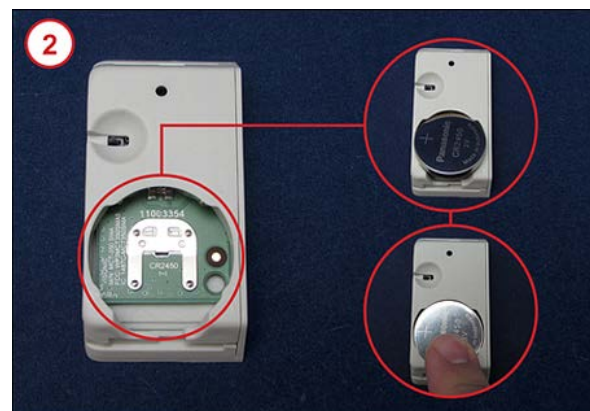


1. Place your thumb or finger on the top edge of the sensor cover and push/pull towards the end of the Sensor. The cover will slide a short distance and stop so you can pull the cover off of the Sensor.

Take a Look. If a battery is already present, remove it by gently using your fingertip to pull one end of the battery up until the battery is loose and you can pull it free from the slot.



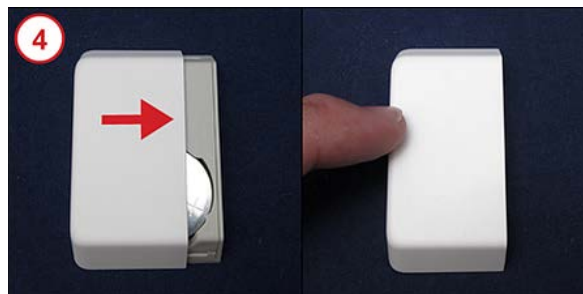
2. Insert the CR2450 battery by placing it flat against the prongs in the battery compartment with the negative (-) side facing down. The battery should fit inside the battery cradle.



3. Align the small tab on the cover with the slot in the track on the Sensor body. Press the cover down onto the Sensor.



4. Use your thumb or finger to slide the cover towards the opposite end of the Sensor until it snaps into place.



5. When the battery is inserted correctly, and the cover is reattached, the green light on the front of the Sensor will light up.



Confirm that the low battery alert has resolved and the equipment appears on your list of connected devices. You should also ensure that sensor events such as door opening or motion registers as an activity on your system.

Need Help? Find these instructions online at <https://customer.xfinity.com/help-and-support/home-security/installing-battery-xhs2-ue-sensor> or <https://customer.xfinity.com/help-and-support/home-security/installing-battery-xhs2-ty-sensor> or <http://customer.xfinity.com/help-and-support/home-security/installing-battery-xhs2-se-sensor>. Get more troubleshooting support at <https://www.xfinity.com/support/gettingstarted/troubleshooting/> or contact a customer service expert at 1-800-XFINITY.

Help Protect Our Environment: Please properly recycle your discarded batteries. For your convenience, batteries are accepted for recycling at various locations. Check www.call2recycle.org or call 1-800-8-Battery (1-800-8-228-8379) to find a recycling location near you.