

# Motion Sensor Battery Installation - Visonic NEXT K85 SMA

## What You'll Need

- NEXT K85 SMA Motion Sensor
- A Phillips-head screwdriver
- One CR123A battery
- Double-sided tape (optional)

## How to Install the Battery

**Before proceeding**, please be sure that your system is disarmed. Working on devices while the system is armed can generate false alarms.

**Did You Know?** You may want to have some double-sided tape on hand if you need to remove your Sensor from the wall to install a battery. Cut the tape to size and reattach your Sensor if the existing adhesive fails to hold it in place.

1. **Is This Your Sensor?** Make sure that your Sensor looks like the one in the image. If it does, you have the right document to find out how to install a battery in your Sensor.



2. Locate the screw on the bottom of the Sensor. Using a Phillips-head screwdriver, turn the screw counterclockwise until the cover is loose.

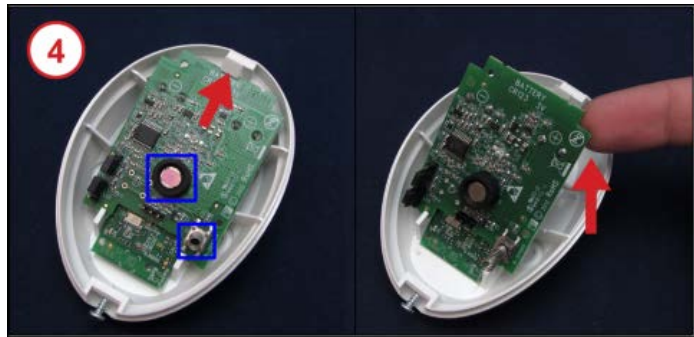


3. Gently pull the bottom of the cover away from the screw, then pull the top tab on the cover away from the slot in the top of the Sensor.

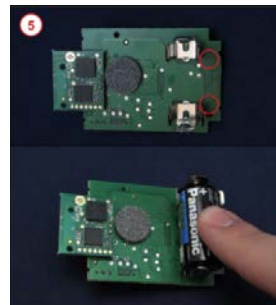


4. Remove the green circuit board by pushing forward on the catch and gently lifting the circuit board out of the Sensor body. The battery compartment is located on the back of the circuit board.

**Did You Know?** The Motion Sensor and tamper are exposed once you remove the cover (shown below within the blue squares). Take care not to touch them.



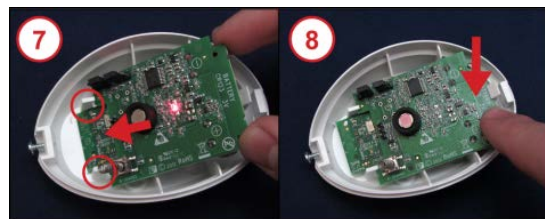
5. Insert one CR123A battery by aligning the positive (+) and negative (-) ends of the battery with the positive (+) and negative (-) indicators on the circuit board, then pressing the battery into the battery clasps.



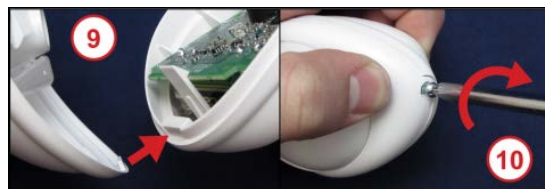
6. When the battery is inserted correctly, the red light on the circuit board will illuminate.



7. Position the circuit board against the stops at the bottom of the Sensor, making sure the battery is facing down.
8. Gently press the battery end of the circuit board down until it snaps into place under the catch.



9. Slide the tab on the top of the cover into the slot at the top of the Motion Sensor.
10. Press and hold the bottom of the cover against the Motion Sensor and use a Phillips-head screwdriver to turn the screw clockwise until tight.



Confirm that the low battery alert has resolved and the equipment appears on your list of connected devices. You should also ensure that sensor events such as door opening or motion registers as an activity on your system.

**Need Help?** Find these instructions online at

<https://www.xfinity.com/support/home-security/installing-battery-next-k85-sma-motion-sensor/>. Get more troubleshooting support at <https://www.xfinity.com/support/gettingstarted/troubleshooting/> or contact a customer service expert at 1-800-XFINITY.

**Help Protect Our Environment:** Please properly recycle your discarded batteries. For your convenience, batteries are accepted for recycling at various locations. Check [www.call2recycle.org](http://www.call2recycle.org) or call 1-800-8-Battery (1-800-8-228-8379) to find a recycling location near you.