

Keypad Battery Installation – SMC SMCWK01-Z

What You'll Need

- SMCWK01-Z Keypad
- Two CR2 batteries
- Double-sided tape (optional)

How to Install the Batteries

Before proceeding, please be sure that your system is disarmed. Working on devices while the system is armed can generate false alarms.

Did You Know? You may want to have some double-sided tape on hand if you need to remove your Keypad from the wall to install a battery. Cut the tape to size and reattach your Keypad if the existing adhesive fails to hold it in place.

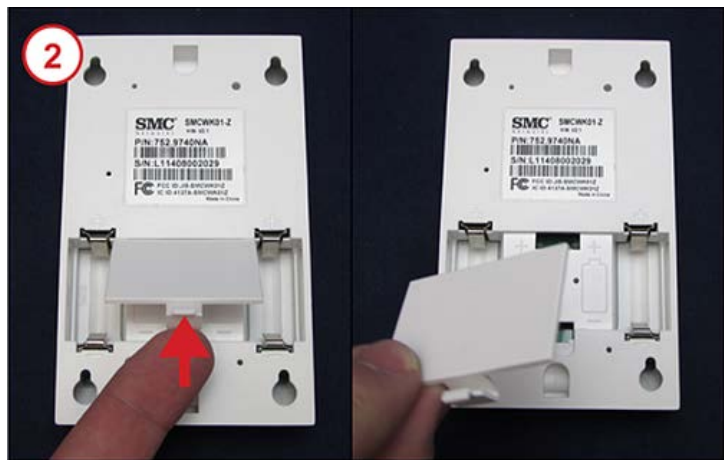
Is This Your Keypad? Make sure that your Keypad looks like the one in the image. If it does, you have the right document to find out how to install a battery in your Keypad.

If your Keypad is currently mounted to the wall, it must be removed so you can install batteries in it. Look at how the Keypad is mounted:

- If your Keypad is screw-mounted, hold the front of your Keypad, push the entire Keypad up, and then pull the Keypad away from the wall. Leave the screws in the wall so you can reattach the Keypad after installing the batteries.
- If your Keypad is attached with double-sided tape, hold the Keypad and gently pull it away from the wall until it is free from the attachment.



1. Locate the tab on the back of the Keypad at the bottom of the device. The tab is part of the battery cover.
2. Use your finger to push the tab back and release it from the Keypad, then remove the cover.



Take a Look. If a battery is already present, remove it by using your fingertip to gently pull one end of the battery up until the battery is loose and you can pull it free from the slot.

- The battery compartment contains a diagram of the proper battery position with a symbol indicating which way the positive (+) end of the battery should be facing.

Insert two CR2 batteries into the compartment, positioning the positive (+) ends of the batteries as shown in the battery diagram. If you do not see a battery diagram, you may have an older model of the Keypad. Check your User Manual for proper battery positioning.



- Align the top tab of the cover with the slot in the top of the compartment and gently press the bottom tab of the cover down until it snaps into place. The Keypad should resume normal operation.

- Reattach the Keypad back to the wall according to the way it was originally mounted.

- If your Keypad was screw-mounted, line up the holes on the back of the Keypad over the screws mounted to the wall, gently press the Keypad to the wall, and pull the Keypad down to secure it over the screws.
- If your Keypad was attached with double-sided tape, reattach the Keypad to the wall using double-sided tape.



Confirm that the low battery alert has resolved. You should also ensure that keypad events such as arming or disarming registers as an activity on your system.

Need Help? Find these instructions online at <https://www.xfinity.com/support/home-security/installing-battery-smcwk01-z-keypad/>. Get more troubleshooting support at <https://www.xfinity.com/support/gettingstarted/troubleshooting/> or contact a customer service expert at 1-800-XFINITY.

Help Protect Our Environment: Please properly recycle your discarded batteries. For your convenience, batteries are accepted for recycling at various locations. Check www.call2recycle.org or call 1-800-8-Battery (1-800-8-228-8379) to find a recycling location near you.