

# Keychain Remote Battery Installation – SMC SMCKF01-Z

## What You'll Need

- SMCKF01-Z Keychain Remote
- One CR2032 battery

## How to Install the Battery

**Before proceeding**, please be sure that your system is disarmed. Working on devices while the system is armed can generate false alarms.

**Is This Your Remote?** Make sure that your Keychain Remote looks like the one in the image. If it does, you have the right document to find out how to install a battery in your Keychain Remote.



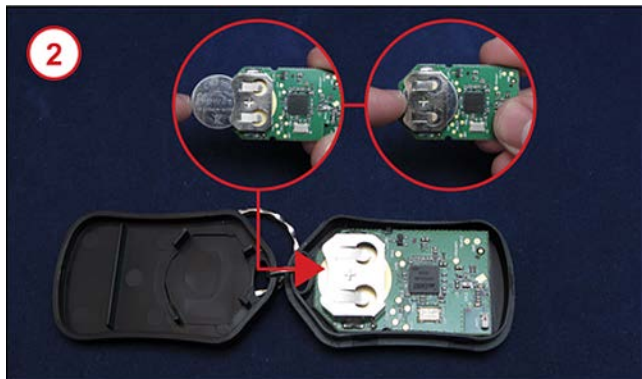
1. Locate the tab on the bottom of the Keychain Remote and use your finger to separate the top of the Remote from the bottom of the Remote. You will see a green circuit board. The battery slot is attached to the circuit board.

**Take a Look.** If a battery is already present, remove it by using your fingertip to gently pull one end of the battery up until the battery is loose and you can pull it free from the slot.

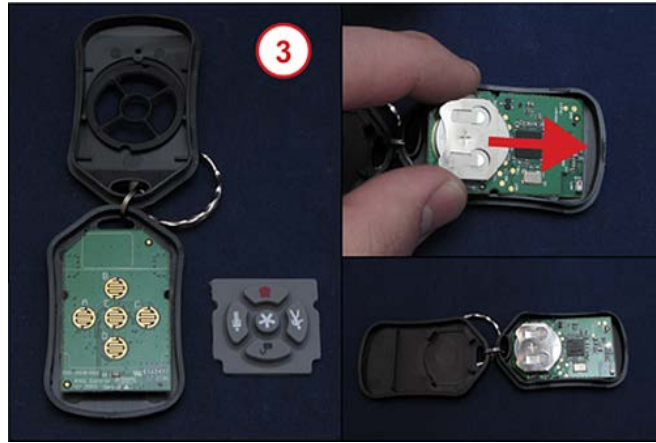


2. Gently remove the circuit board and insert one CR2032 battery into the battery slot matching the direction of the positive (+) placement indicator. If you don't see an indicator, insert the battery with the positive (+) side facing away from the circuit board.

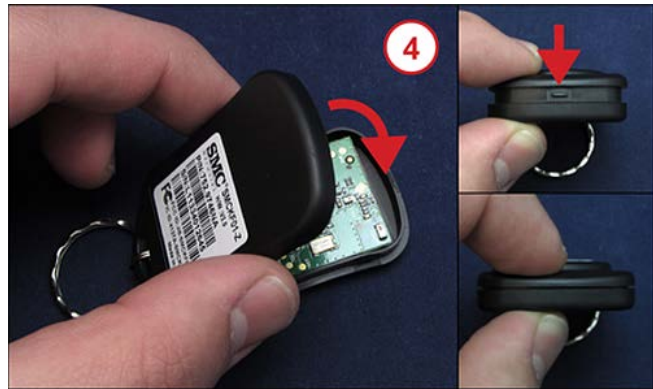
The battery slot has a positive (+) symbol indicating which direction the positive (+) end of the battery should be facing. If your keychain does not have this indicator you should place the positive (+) end of the battery facing you and away from the circuit board.



3. Align the circuit board with the Remote keypad as shown below and gently place the circuit board with the inserted battery back into the Remote. The battery faces the back of the Remote.



4. Align the top tab on the Keychain Remote with the slot on the bottom of the Keychain Remote and gently press the two halves together until they snap into place.



**Need Help?** Find these instructions online at <https://www.xfinity.com/support/home-security/installing-battery-smckf01-z-keychain-remote/>. Get more troubleshooting support at <https://www.xfinity.com/support/gettingstarted/troubleshooting/> or contact a customer service expert at 1-800-XFINITY.

**Help Protect Our Environment:** Please properly recycle your discarded batteries. For your convenience, batteries are accepted for recycling at various locations. Check [www.call2recycle.org](http://www.call2recycle.org) or call 1-800-8-Battery (1-800-8-228-8379) to find a recycling location near you.