

Door / Window Sensor Battery Installation – SMC SMCDW01-Z SMC SMCDW02-Z

What You'll Need

- SMC SMCDW01-Z or SMC SMCDW02-Z Door / Window Sensor
- One CR2 battery
- Double-sided tape (optional)

How to Install the Battery

Before proceeding, please be sure that your system is disarmed. Working on devices while the system is armed can generate false alarms.

Did You Know? You may want to have some double-sided tape on hand if you need to remove your Sensor from the wall to install a battery. Cut the tape to size and reattach your Sensor if the existing adhesive fails to hold it in place.

Is This Your Sensor? Make sure that your Sensor looks like the one in the image. If it does, you have the right document to find out how to install a battery in your Sensor.



1. Locate the small tab on the bottom of the Sensor.

Where's the Tab? If you don't see the tab, make sure to check the top and bottom of the Sensor. The tab location is dependent on the positioning of the Sensor during installation.

2. Press the tab down using the index finger of one hand while pulling the cover away from the Sensor body using your other hand.



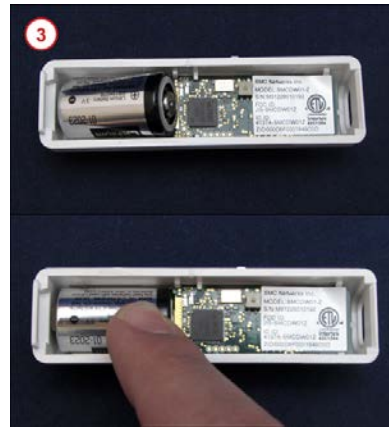
Did You See? There is a mark located to the side of the Sensor (see arrow above) that shows the recommended side to use when matching up the Sensor with the magnet. The same mark is found on the magnet for easy alignment.

Did You Know? Make sure not to press down the tamper (shown above within the blue square) when inserting the battery as this will default the Sensor.



Take a Look. If a battery is already present, remove it by using your fingertip to gently pull one end of the battery up until the battery is loose and you can pull it free from the slot.

3. Insert a CR2 battery into the battery compartment, with the negative (-) end of the battery touching the spring at the top of the slot. Press the positive (+) end into place against the green circuit board.



4. Align the tab at the top of the cover with the thin slot at the top of the Sensor's body.



5. Gently push the tab on the opposite side of the cover into the Sensor's body until it snaps into place.



6. When the battery is inserted correctly and the cover is reattached, the green light on the front of the Sensor will light up.



Confirm that the low battery alert has resolved and the equipment appears on your list of connected devices. You should also ensure that sensor events such as door opening or motion registers as an activity on your system.

Need Help? Find these instructions online at

<https://www.xfinity.com/support/home-security/installing-battery-smcdw01-z-sensor/> or <https://www.xfinity.com/support/home-security/installing-battery-smcdw02-z-sensor/> Get more troubleshooting support at <https://www.xfinity.com/support/gettingstarted/troubleshooting/> or contact a customer service expert at 1-800-XFINITY.

Help Protect Our Environment: Please properly recycle your discarded batteries. For your convenience, batteries are accepted for recycling at various locations. Check www.call2recycle.org or call 1-800-8-Battery (1-800-8-228-8379) to find a recycling location near you.