

**Enhanced Series Enclosure Features**

- 44 RMU, 19" EIA 310-D Compliant
- Fully Welded Steel Construction  
#16 Gauge Steel
- Universal M6 Cage Nut Rails Standard  
(10/32 Tapped Rails Available)  
#12 Gauge Steel
- Rack Mounting Hardware Included
- Rails are Infinitely Adjustable, Front to Rear (Max. Rail Spacing is Cabinet Depth minus 2 inches)
- Rails with RMU Markings
- TRC (True Rail Count) Rails  
This certifies that the number of RMU are true and all accessible within the door opening.
- Total of Three 10/32 x 1.5" Copper Plated Grounding Studs (One in bottom, two in top)
- Weight Capacity: 1500 lbs. on levelers, bolted to floor, or on heavy duty casters
- Durable Powder Coat Finish
- Field Reversible Door Hinges (No Additional Hardware Required)
- Optional Features:
  - Cable Lacing Bars
  - Ganging Hardware (No Tools Required)
  - Anti-tip Legs
  - Variety of Top, Bottom, & Side Panels

TOP DESIGNED FOR VARIETY OF REMOVABLE TOP PANELS

12 GAUGE MOUNTING RAILS  
- 44 RMU, 19" 310-D COMPLIANT  
- 0.375" SQ. CAGE NUT (STANDARD)  
- OPTIONAL RAILS TAPPED #10/32

CABLE TIE-DOWN SLOTS

1.50" DIA. CABLE PASS THROUGH HOLES

NETWORK / GANGING HOLES

RAILS ARE FULLY ADJUSTABLE FRONT-TO-REAR

10/32 x 1.5" COPPER PLATED GROUNDING STUD, QTY (3)

DOORS CAN BE EITHER RIGHT OR LEFT-HAND HINGED



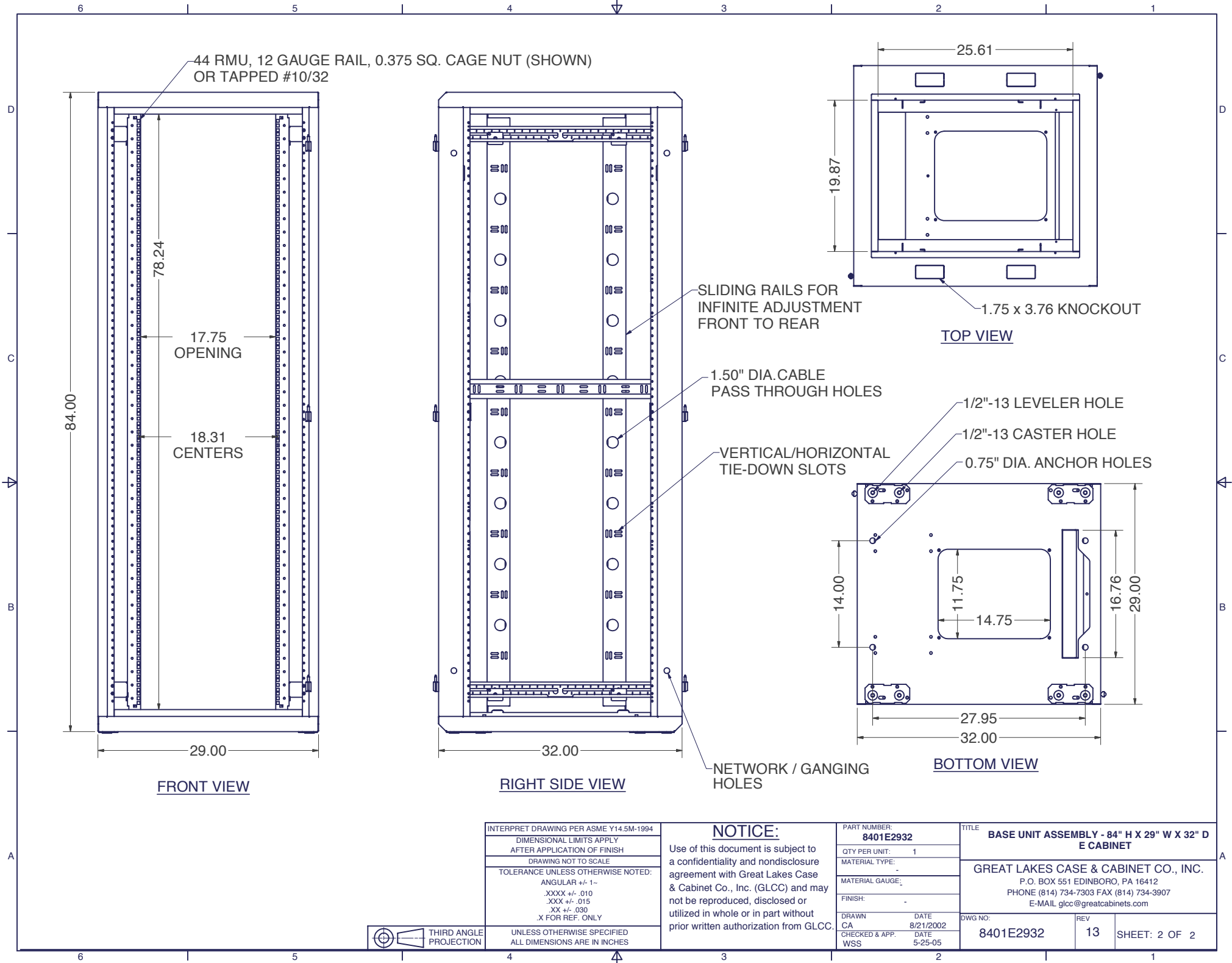
THIRD ANGLE PROJECTION

UNLESS OTHERWISE SPECIFIED ALL DIMENSIONS ARE IN INCHES

**NOTICE:**

Use of this document is subject to a confidentiality and nondisclosure agreement with Great Lakes Case & Cabinet Co., Inc. (GLCC) and may not be reproduced, disclosed or utilized in whole or in part without prior written authorization from GLCC.

INTERPRET DRAWING PER ASME Y14.5M-1994 DIMENSIONAL LIMITS APPLY AFTER APPLICATION OF FINISH DRAWING NOT TO SCALE TOLERANCE UNLESS OTHERWISE NOTED: ANGULAR +/- 1- .XXXX +/- .010 .XXX +/- .015 .XX +/- .030 X FOR REF. ONLY		PART NUMBER: <b>8401E2932</b> QTY PER UNIT: 1 MATERIAL TYPE: MATERIAL GAUGE: FINISH:	TITLE <b>BASE UNIT ASSEMBLY - 84" H X 29" W X 32" D E CABINET</b> GREAT LAKES CASE & CABINET CO., INC. P.O. BOX 551 EDINBORO, PA 16412 PHONE (814) 734-7303 FAX (814) 734-3907 E-MAIL glcc@greatcabinets.com
DRAWN: CA CHECKED & APP. WSS	DATE: 8/21/2002 DATE: 5-25-05	DWG NO: <b>8401E2932</b>	REV: 13 SHEET: 1 OF 2



INTERPRET DRAWING PER ASME Y14.5M-1994  
 DIMENSIONAL LIMITS APPLY  
 AFTER APPLICATION OF FINISH  
 DRAWING NOT TO SCALE  
 TOLERANCE UNLESS OTHERWISE NOTED:  
 ANGULAR +/- 1°  
 .XXXX +/- .010  
 .XXX +/- .015  
 .XX +/- .030  
 .X FOR REF. ONLY



THIRD ANGLE  
PROJECTION

UNLESS OTHERWISE SPECIFIED  
ALL DIMENSIONS ARE IN INCHES

**NOTICE:**

Use of this document is subject to a confidentiality and nondisclosure agreement with Great Lakes Case & Cabinet Co., Inc. (GLCC) and may not be reproduced, disclosed or utilized in whole or in part without prior written authorization from GLCC.

PART NUMBER: <b>8401E2932</b>	
QTY PER UNIT:	1
MATERIAL TYPE:	-
MATERIAL GAUGE:	-
FINISH:	-
DRAWN	DATE
CA	8/21/2002
CHECKED & APP.	DATE
WSS	5-25-05

TITLE <b>BASE UNIT ASSEMBLY - 84" H X 29" W X 32" D E CABINET</b>		
GREAT LAKES CASE & CABINET CO., INC. P.O. BOX 551 EDINBORO, PA 16412 PHONE (814) 734-7303 FAX (814) 734-3907 E-MAIL glcc@greatcabinets.com		
DWG NO: <b>8401E2932</b>	REV <b>13</b>	SHEET: 2 OF 2