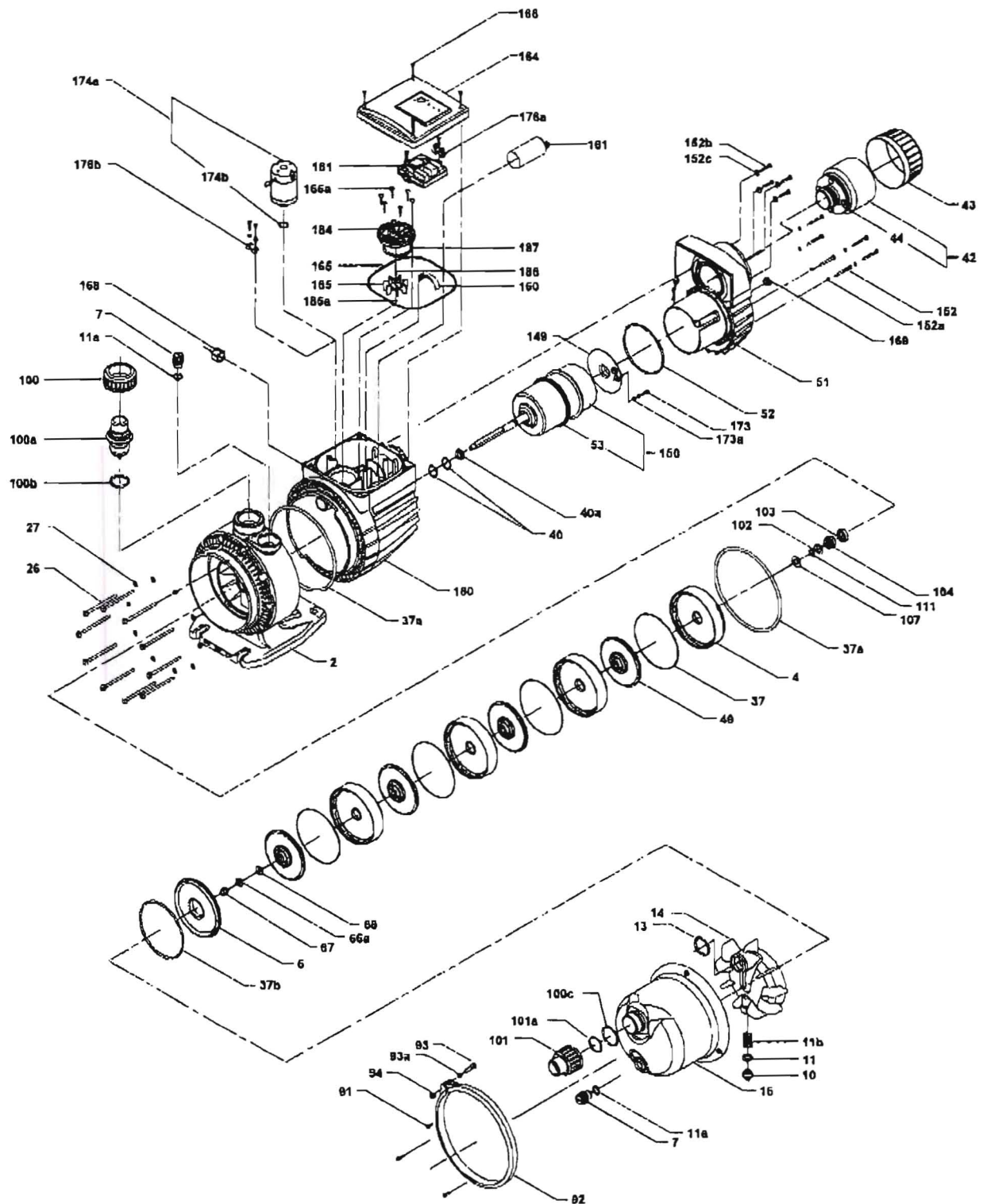


Exploded view (tm020085 2503)




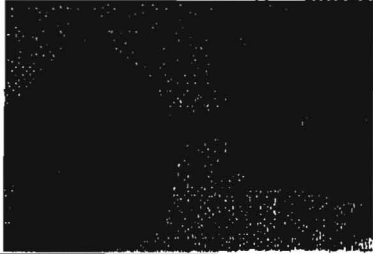



3.4 Replacing the electronic unit, flow sensor and pressure switch

3.4.1 Removing the electronic unit, flow sensor and pressure switch

1. Slacken the screws pos. 166 and remove the terminal box cover pos. 164.
2. Disconnect the leads and pull them out of the terminal block on the electronic unit pos. 181.
3. Disconnect the flow sensor and pressure switch from the electronic unit pos. 181.
4. Disconnect the earth lead.
5. Remove the electronic unit pos. 181.
6. Remove the capacitor pos. 161 from the terminal box and disconnect the leads.
7. Remove the pressure switch pos. 174a using the fingers.
8. Slacken and remove the screws pos. 166a.
9. Remove the flow sensor cover pos. 184 including the O-ring pos. 187 and flow wheel pos. 185.
10. Pull up the flow wheel shaft pos. 186 and remove the washer pos. 185a.

3.4.2 Fitting the electronic unit, flow sensor and pressure switch

1. Fit the flow wheel shaft pos. 186 and the washer pos. 185a.
2. Fit the flow wheel pos. 185 with the magnet against the cover.
3. Lubricate the O-ring pos. 187 and fit it on the cover pos. 184.
4. Press the cover pos. 184 home. Check that the pin of the flow wheel chamber fits the hole in the cover.
5. Fit and tighten the screws pos. 166a.
6. Lubricate the O-ring pos. 174b with soapy water.
7. Fit and tighten the pressure switch pos. 174a using the fingers.
8. Pull the mains cable into the terminal box.
9. Lead the earth lead round the pressure switch 174a on the outside and the leads round the flow sensor pos. 184 on the inside.
10. Fit the capacitor pos. 161 into the retainer by means of the clip pos. 160.
11. Fit the electronic unit pos. 181 and connect the leads including the earth terminal pos. 176a, see 5. Wiring diagram.
12. Fit the terminal box cover pos. 164 including the O-ring pos. 165.
13. Fit and tighten the screws pos. 166.

<p>B6</p>  <p>Flow sensor</p>	<p>Check for impurities in the flow wheel housing. Replace the flow sensor if defect.</p> <p>TMO2 2379 4201</p>
<p>B7</p> 	<p>Make sure that the magnet on the flow wheel is fitted against the sensor in the flow sensor cover.</p> <p>TMO2 2366 4201</p>
<p>B8</p> 	<p>Fit the controller and the cover. Connect the electricity supply.</p> <p>TMO2 2380 4201</p>
<p>B9</p> 	<p>Press the on/off button. Do not forget to turn on the tap.</p> <p>TMO2 2381 4201 \ TMO2 2382 4201</p>
<p>B10</p> 	<p>If the pump delivers water without stopping/starting at intervals of 15 seconds, the pump is OK. Otherwise, the controller must be replaced.</p> <p>TMO2 2375 4201</p>