

# J. D'Addario & Company, Inc.

FACTORY DIRECT DEALER CATALOG

**D'Addario**  
STRINGS

**EVANS**  
drumheads

**D'Addario**  
BOWED STRINGS

**Vandoren**  
PARIS

**ARCHIVES**

**PLANET  
WAVES**



[www.daddario.com](http://www.daddario.com)

Winter/Spring 2001

# New!

These limited-edition 5-packs are packaged in a reusable, collectible tin box (pictured) that will come in handy for your customers.

*page 6*



We've expanded our selection of unique instrument cables to include right-angle instrument cables, microphone cables, patch cables, and MIDI cables. *page 21-22*



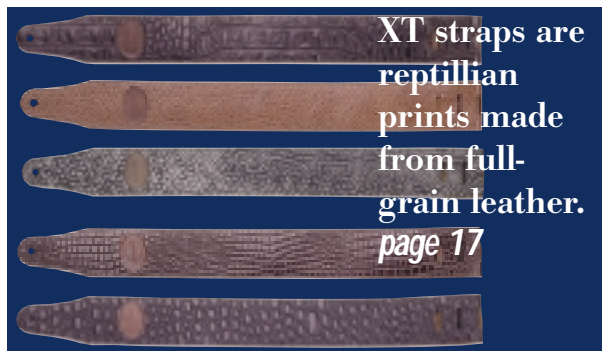
The Hardware line has grown with our new Auto-Trim Tuning Machines. *page 20*



Our new EXP Coated Acoustic Guitar Strings (patent pending) are coated before they're wound, so the strings feel, look, and sound like regular strings, but last much longer. *page 7*



XT straps are reptilian prints made from full-grain leather. *page 17*



Helicore Fractional Bass Strings –  $\frac{1}{2}$ ,  $\frac{1}{4}$ ,  $\frac{1}{8}$ , &  $\frac{1}{10}$

Helicore Violin & Viola Tin Box - 1 set & free polishing cloth. *page 27*



New Accessory Displays and Plan-O-Grams. *page 25*



Our new  
EQ Resonance  
Gate System is going  
to have drummers  
amazed at its  
functionality.  
*page 36*



All-new Evans  
PrePak  
packaging for  
2001.  
*page 35*



The AF Patch  
enhances  
attack, retains  
the resonance,  
& extends the  
life of bass  
heads. *page 36*



The new Externally  
Mounted Adjustable  
Damping bass  
drumhead is  
totally  
revolutionary.  
*page 33*

# Attention Dealers: Save 2%

Visit our website and place your order on-line!

Secure & Easy to use.

Receive a 5% discount on your initial order and 2% off all subsequent orders. (Orders must be placed on-line to be eligible for the discount). Call your sales representative or e-mail: [yoursite@daddario.com](mailto:yoursite@daddario.com) for more information.

New point-  
of-purchase  
displays for  
the popular  
reed  
Twin Packs.  
*page 45*



The New  
Vandoren  
M15  
Mouthpiece.  
*page 42*



## Welcome to the latest edition of J. D'Addario's Factory Direct Dealer Catalog!

As you look through this catalog, take note of some of the new products your customers will be asking about this year, which you'll find listed on the previous pages.

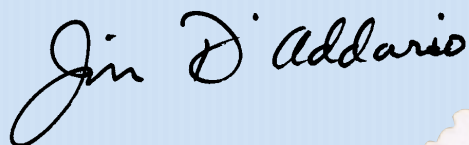
We've been undergoing tremendous growth here at J. D'Addario lately. In addition to opening D'Addario Studio West, a West Coast product development showroom where artists can test our latest products and provide feedback, we also have a West Coast warehouse in Chino, California, so orders from dealers in the Western half of the U.S. will arrive faster. And we've recently concluded a complete overhaul and renovation of our sound and recording rooms here at our New York facilities, further upgrading our modern product sampling and testing rooms with the most advanced equipment in the world, including some designed and built right here by our own on-staff engineers.

You may also notice a new look to our website. The new design of the site is easy to navigate, and still has the news, tips, products, and information that have made the site so popular. But did you know that by placing your order directly on our secure web server, you'll save 2% on every order? More dealers each day are turning to our website for convenient 24-hour ordering and are saving money in the process! Of course, you can still reach your Sales Representative with questions or orders from 9AM to 8PM, EST, during weekdays.

We hope this new catalog comes in handy for you. If you have any questions or comments, you can always reach us by e-mailing [strings@daddario.com](mailto:strings@daddario.com), [mail@evansdrumheads.com](mailto:mail@evansdrumheads.com), [mail@planet-waves.com](mailto:mail@planet-waves.com), or [vandoren@daddario.com](mailto:vandoren@daddario.com), or by calling 1-800-323-2746.

Thanks so much for your support of D'Addario, Evans, Planet Waves, Vandoren, and Archives products. We're looking forward to a great year serving you.

Yours truly,



Jim D'Addario



# Contents



String Sets . . . . .	6-11
Single Strings . . . . .	12-14
Single String Kits . . . . .	15
Set Displays . . . . .	15
Bowed Instrument Strings . . . . .	27-29
Rosin . . . . .	29
Music Folders . . . . .	29



Planet Waves Guitar Straps . . . . .	16
Leather Straps . . . . .	17
D'Addario Guitar Straps . . . . .	18
Guitar Care . . . . .	18
Guitar Gear . . . . .	19
Guitar Hardware . . . . .	20
Instrument Cables . . . . .	21-22
Guitar Electronics . . . . .	22
Guitar Picks . . . . .	23
Guitar Strap Displays . . . . .	24-25



Archives Music Writing Papers . . . . .	26
-----------------------------------------	----



Promo Merchandise . . . . .	46-47
-----------------------------	-------

Prices effective February 1st, 2001.  
Prices subject to change without notice.

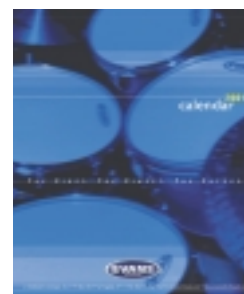


Evans Snare & Tom-Tom . . . . .	30-31
Bass Drumheads . . . . .	32-34
Evans PrePaks . . . . .	35
Evans Accessories . . . . .	36
Conga Drumheads . . . . .	37
Orchestral Drumheads . . . . .	37
Marching Drumheads . . . . .	38
Evans Displays . . . . .	39-40



Vandoren Reeds . . . . .	41
Vandoren Reed Twin Packs . . . . .	42
Vandoren Clarinet Mouthpieces . . . . .	42
Vandoren Saxophone Mouthpieces . . . . .	43
Vandoren Ligatures . . . . .	44
Vandoren Accessories . . . . .	45

## 2001 Calendars Available



## Now Available

### The D'Addario Strings & Evans CD-Roms

Order one for your store today!

- Interactive Catalog (D'Addario only)
- Factory Tour
- Company History
- Interviews with top musicians
- Sound clips of strings

## Electric Guitar

## XL Nickel Round Wound

The string of choice for rock musicians worldwide, known for its distinctive bright sound and excellent intonation.



EXL110	Regular Light .010-.046	\$8.99
EXL110-7	Regular Light .010-.056 7-string	\$11.99
EXL110W	Regular Light/Wnd 3rd .010-.046	\$9.99
EKXL110	Regular Light/Soldered Twists .010-.046	\$10.99
ESXL110	Regular Light/Double Ball End .010-.046	\$13.99
EXL110+	Regular Light Plus .0105-.048	\$8.99
EXL115	Blues/Jazz Rock .011-.049	\$8.99
EXL115W	Blues/Jazz Rock/Wnd 3rd .011-.049	\$9.99
EXL120	Super Light .009-.042	\$8.99
EXL120-7	Super Light .009-.052 7-string	\$11.99
EKXL120	Super Light/Soldered Twists .009-.042	\$10.99
ESXL120	Super Light/Double Ball End .009-.042	\$13.99
EXL120+	Super Light Plus .0095-.044	\$8.99
EXL125	Super Light Top/Reg. Bottom .009-.046	\$8.99
ESXL125	Super Light Top/Reg. Bottom/Double Ball End .009-.046	\$13.99
EXL130	Extra-Super Light .008-.038	\$8.99
EXL130+	Extra-Super Light Plus .0085-.039	\$8.99
EXL140	Light Top/Heavy Bottom .010-.052	\$9.99
EXL150	12 String/Super Light .010-.046	\$14.99
EJ20	Jazz Extra-Light .010-.049	\$11.49
EJ21	Jazz Light .012-.052	\$11.49
EJ22	Jazz Medium .013-.056	\$11.49

## New! Electric Guitar

## 5-Pack Tin Box

## XL Nickel Round Wound

Limited time only! Born from the overwhelming success of our Multi-Packs, 5-Packs feature five sets of D'Addario's most popular electric guitar strings in a limited-edition, reusable tin box at more than a 10% savings per set!



EXL110-TB	EXL110 - 5 Pack (Tin Box)	\$39.49
EXL120-TB	EXL120 - 5 Pack (Tin Box)	\$39.49



Mark  
Tremonti  
of Creed  
plays  
EXL110  
strings

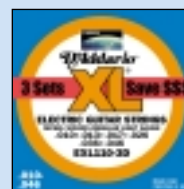


## Electric Guitar 3-D Packs

## XL Nickel Round Wound

D'Addario 3-D packs are three complete sets conveniently packaged in one box. Each set is individually sealed in a Corrosion Intercept bag for long life. We save packaging materials and you and your customers save more than 10% over the cost of our normal single set packs.

EXL110-3D	Regular Light .010-.046	\$23.49
EXL115-3D	Blues/Jazz Rock .011-.049	\$23.49
EXL120-3D	Super Light .009-.042	\$23.49
New! EXL125-3D	Super Light Top/Reg Bottom .009-.046	\$23.49



## Electric Guitar

## XLS Stainless Steel Round Wound

XLS strings are extremely long lasting and resistant to climatic conditions. The winding is a 430 stainless steel alloy that is highly magnetic and produces a clear, bright tone with maximum signal strength, also providing the oxidation-resistant properties of stainless steel.

EXLS510	Regular Light .010-.046	\$8.99
EXLS520	Super Light .009-.042	\$8.99
XLS530	Extra-Super Light .008-.038	\$9.99
XLS540	Light Top/Heavy Bottom .010-.052	\$11.99
XLS590	Jazz Light .012-.052	\$12.99
XLS600	Jazz Medium .013-.056	\$12.99
XLS490	E-9th Pedal Steel Tuning	\$15.99
XLS500	C-6th Pedal Steel Tuning	\$20.99



## Electric Guitar

## Half Round Heat Treated Stainless Steel

Half Round guitar strings are round wound with 430 stainless steel, then precision ground, leaving the outer surface smooth. They retain the flexibility and most of the tonal characteristics of round wound strings. New heat treating process increases brightness.

EHR310	Regular Light .010-.046	\$12.99
EHR320	Super Light .009-.042	\$12.99
EHR330	Extra-Super Light .008-.039	\$12.99
EHR340	Light Top/Heavy Bottom .010-.052	\$12.99
EHR350	Jazz Light .012-.052	\$14.99
EHR360	Jazz Medium .013-.056	\$14.99



## Electric Guitar

## Chromes Flat Wound

Nickel-plated steel underwindings on hex cores build a foundation for the delicate outer ribbon winding. After this winding is applied, each string is given 3 polishing steps to produce an incredibly smooth surface.

ECG23	Extra Light .010-.048	\$15.99
ECG24	Jazz Light .011-.050	\$15.99
ECG24-7	Jazz Light .011-.065 7-string	\$21.49
ECG25	Light .012-.052	\$15.99
ECG26	Medium .013-.056	\$15.99





**New! EXP Acoustic Guitar****Coated Phosphor Bronze Round Wound**

Demand for these new coated strings has skyrocketed since we first began sending out Beta samples. EXP strings' wrap wire is coated before it's wound onto the hex core, resulting in a string that lasts 3-4 times longer than a regular string, but still retains the feel and sound of traditional strings! Unlike any other coated strings on the market!

EXP15	EXP Coated PB Extra Light	\$23.99
EXP26	EXP Coated PB Custom Light	\$23.99
EXP16	EXP Coated PB Light	\$23.99
EXP17	EXP Coated PB Medium	\$23.99
EXP38	EXP Coated PB 12-String Light	\$39.99

**Acoustic Guitar****Phosphor Bronze Round Wound**

Introduced to stringmaking by D'Addario in 1974, phosphor bronze has become synonymous with great, long-lasting string tone, and has become the stage and studio choice of top professionals worldwide.

EJ15	Extra Light .010-.047	\$12.49
EJ26	Custom Light .011-.052	\$12.49
EJ16	Light .012-.053	\$12.49
EJ17	Medium .013-.056	\$12.49
EJ18	Heavy .014-.059	\$12.49
EJ19	Bluegrass: Light Top/Medium Bottom .012-.056	\$12.49
EJ38	12-String/Light .010-.047	\$19.99
EJ39	12-String/Medium .012-.052	\$19.99
EJ41	12-String/Extra Light .009-.045	\$19.99
EJ42	Resophonic Guitar .016-.056	\$12.49

**Acoustic Guitar 3-D Packs****Phosphor Bronze Round Wound**

D'Addario 3-D packs are three complete sets conveniently packaged in one box. Each set is individually sealed in a Corrosion Intercept bag for long life. We save packaging materials and you and your customers save more than 10% over the cost of our normal single set packs.

EJ15-3D	Extra Light .010-.047	\$32.49
EJ16-3D	Light .012-.053	\$32.49
EJ17-3D	Medium .013-.056	\$32.49
<b>New!</b> EJ26-3D	Custom Light .011-.052	\$32.49

**New! Acoustic Guitar****5-Pack Tin Box****Phosphor Bronze Round Wound**

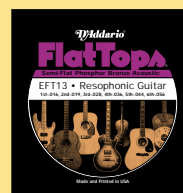
Limited time only! Born from the overwhelming success of our Multi-Packs, 5-Packs feature five sets of D'Addario's most popular acoustic guitar strings in a limited-edition, reusable tin box at more than a 10% savings per set!

EJ16-TB	EJ16 - 5 Pack (Tin Box)	\$54.49
EJ17-TB	EJ17 - 5 Pack (Tin Box)	\$54.49

**Acoustic Guitar****Flat Tops Semi-Flat Phosphor Bronze**

D'Addario phosphor bronze strings in a semi-flat format. Three polishing steps produce a smooth, flattened playing surface without sacrificing the tone and sustain associated with phosphor bronze strings.

EFT13	Resophonic Guitar .016-.056	\$15.99
EFT15	Extra Light .010-.047	\$15.99
EFT16	Regular Light .012-.053	\$15.99
EFT17	Medium .013-.056	\$15.99

**Acoustic Guitar****80/20 Bronze Round Wound**

D'Addario pioneered the use of 80/20 bronze (sometimes called brass) for use on acoustic guitar strings. Bright and crisp sounding, they are still a popular choice for stage and studio professionals.

EJ10	Extra Light .010-.047	\$9.99
EJ11	Light .012-.053	\$9.99
EJ12	Medium .013-.056	\$9.99
EJ14	Bluegrass: Light Top/Medium Bottom .012-.056	\$9.99
EJ36	12-String/Light .010-.047	\$16.49

**Acoustic Guitar****85/15 Great American Bronze Round Wound**

Great American bronze strings combine the brilliance of 80/20 alloy strings with the great sustain and long-lasting characteristics of phosphor bronze.

EZ890	Super Light .009-.045	\$5.49
EZ900	Extra Light .010-.050	\$5.49
EZ910	Light .011-.052	\$5.49
EZ920	Medium Light .012-.054	\$5.49
EZ930	Medium .013-.056	\$5.49
EZ940	12-String/Light .010-.050	\$8.99



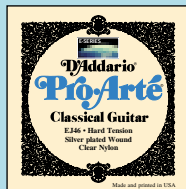
Ani DiFranco  
uses EJ17s



## Classical Guitar

### Pro•Arté

Each Pro•Arté treble string is measured 200 times by a sophisticated computer-controlled laser system that performs consistency and quality control checks while determining the string's exact playing tension.



EJ44C	Long Lasting Composite Polymer/X-Hard	.....\$21.99
EJ44-9	Silver/Clear/Extra-Hard (extra basses)	.....\$21.99
EJ44	Silver/Clear/Extra-Hard	.....\$13.99
EJ45C	Long Lasting Composite Polymer/Normal	.....\$20.99
EJ45-9	Silver/Clear/Normal (extra basses)	.....\$21.99
EJ45	Silver/Clear/Normal	.....\$13.99
EJ45LP	Lightly Polished Silver/Clear/Normal	.....\$27.49
EJ46C	Long Lasting Composite Polymer/Hard	.....\$21.99
EJ46-9	Silver/Clear/Hard (extra basses)	.....\$21.99
EJ46	Silver/Clear/Hard	.....\$13.99
EJ46LP	Lightly Polished Silver/Clear/Hard	.....\$27.49
J43	Silver/Clear/Light	.....\$14.99
J47	Gold/Clear/Normal	.....\$13.49
J48	Gold/Clear/Hard	.....\$13.49
J49	Silver/Black/Normal	.....\$14.99
J50	Silver/Black/Hard	.....\$14.99
J51	Polished Basses/Hard	.....\$29.99
J52	Alto Guitar Silver/Clear/Normal	.....\$13.49

## Classical Guitar

### D'Addario Classics

Each classic treble string is ground using proprietary centerless grinding techniques. Roundness & dimension control are unsurpassed, insuring absolutely perfect intonation. Rectified nylon strings are known for their "warmer" tone and are preferred by many recording artists.



J28	Flat Sterling Wound/Rectified Clear Nylon - Normal	..\$51.49
J29	Silver Wound/Rectified Clear Nylon - Moderate	.....\$13.99
J30	Silver Wound/Rectified Clear Nylon - Normal	.....\$13.99
J31	Silver Wound/Rectified Clear Nylon - Hard	.....\$13.99
J27	Silver Wound/Clear Nylon - Student Grade	.....\$8.99

## Folk Guitar

### Folk Nylon

Folk nylon strings are high-quality nylon guitar strings with ball ends on each string to facilitate easy installation on classic guitars as well as steel string acoustic guitars, if desired.

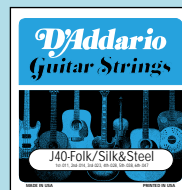


J32	Silver Wound/Black nylon trebles	.....\$13.49
J33	Gold Wound/Clear nylon trebles	.....\$13.49
J34	Gold Wound/Black nylon trebles	.....\$13.49

## Folk Guitar

### Silk & Steel

Silk & steel strings make for easier fingering and mellow tone. Excellent on smaller body acoustic guitars.



J35	12-String/Silverplated Wound	.....\$23.49
J40	Silverplated Wound	.....\$16.49

The Assad Duo  
uses EJ44 & EJ46



Sam Rivers of  
Limp Bizkit uses  
SW2000-5





## Electric Bass

### XL Nickel Round Wound

Nickel-plated steel delivers excellent magnetic output while providing a smooth, comfortable surface that reduces premature fret wear. XL electric bass strings are known for their distinctive bright sound and excellent intonation.



ITEM #	SCALE	GAUGES	RETAIL
EXL160	Long	.050 .070 .085 .105	\$36.99
EXL160SL	Super Long	.050 .070 .085 .105	\$41.99
EXL160S	Short	.050 .070 .085 .105	\$36.99
EXL160M	Medium	.050 .070 .085 .105	\$36.99
EXL160-5	5-String/Long	.050 .070 .085 .105 .135	\$48.49
ESXL160	Double Ball/Long	.050 .070 .085 .105	\$55.99
EXL165	Long	.045 .065 .085 .105	\$36.99
EXL165SL	Super Long	.045 .065 .085 .105	\$41.99
EXL165-6	6-String/Long	.032 .045 .065 .085 .105 .135	\$54.49
EXL170	Long	.045 .065 .080 .100	\$36.99
EXL170SL	Super Long	.045 .065 .080 .100	\$41.99
EXL170S	Short	.045 .065 .080 .100	\$36.99
EXL170M	Medium	.045 .065 .080 .100	\$36.99
EXL170-5	5-String/Long	.045 .065 .080 .100 .130	\$48.49
EXL170-5SL	5-String/Super Long	.045 .065 .080 .100 .130	\$55.99
EXL170-6	6-String/Long	.032 .045 .065 .080 .100 .130	\$54.49
EXL170-8	8-String/Long	.018 .028 .040 .050 .045 .065 .080 .100	\$63.49
ESXL170	Double Ball/Long	.045 .065 .080 .100	\$55.99
EXL180	Long	.035 .055 .075 .095	\$36.99
EXL220	Long	.040 .060 .075 .095	\$36.99
EXL220SL	Super Long	.040 .060 .075 .095	\$41.99
EXL220M	Medium	.040 .060 .075 .095	\$36.99
EXL220-5	5-String/Long	.040 .060 .075 .095 .125	\$48.49
EXL230	Long	.055 .075 .090 .110	\$36.99
EXL280	Piccolo/Long	.020 .032 .042 .052	\$31.99

## Electric Bass Twin Packs

### EXL Bass Twin Packs

D'Addario's Bass Twin Packs are two complete sets in one box, with each set packaged in a Corrosion Intercept bag for long life. We save packaging materials and you and your customers save 25% over the cost of our normal single set packs!



ITEM #	SCALE	RETAIL
EXL160TP	2 Sets EXL Bass Reg Long	\$55.49
EXL165TP	2 Sets EXL Bass Soft/Reg	\$54.75
EXL170TP	2 Sets EXL Bass Soft Long	\$55.49
EXL170-5TP	2 Sets EXL-5 String Bass Soft Long	\$72.99
EXL220TP	2 Sets EXL Bass Super/Soft Long	\$55.49

## Electric Bass

### Slowound Nickel Round Wound

D'Addario's revolutionary Slowound strings are our premier bass string. An innovative tension control system eliminates variables during wrapping. A high-carbon tinned steel core wrapped with nickel-plated steel produces a clear, tight sound with a powerful bottom.

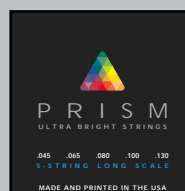


ITEM #	SCALE	GAUGES	RETAIL
SW1000	Long	.040 .060 .075 .095	\$45.99
SW2000	Long	.045 .065 .080 .100	\$45.99
SW2000SL	Super Long	.045 .065 .080 .100	\$52.49
SW2000-5	5-String/Long	.045 .065 .080 .100 .130	\$61.99
SW2000-5SL	5-String/Super Long	.045 .065 .080 .100 .130	\$71.49
SW2000-6	6-String/Long	.032 .045 .065 .080 .100 .130	\$69.49
SW3000	Long	.045 .065 .085 .105	\$45.99
SW3000-5	5-String/Long	.045 .065 .085 .105 .130	\$61.99
SW4000	Long	.050 .070 .085 .105	\$45.99

## Electric Bass

### Prism Solid Stainless Steel Round Wound

Solid stainless steel windings deliver longer lasting strings with very brilliant tone. Prism strings are environmentally packaged. Our brightest sounding bass string.

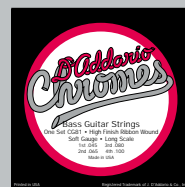


ITEM #	SCALE	GAUGES	RETAIL
PSS50	Long	.040 .060 .075 .095	\$40.99
PSS50SL	Super Long	.040 .060 .075 .095	\$46.49
PSS60	Long	.045 .065 .080 .100	\$40.99
PSS60SL	Super Long	.045 .065 .080 .100	\$46.49
PSS60S	Short	.045 .065 .080 .100	\$40.99
PSS60M	Medium	.045 .065 .080 .100	\$40.99
PSS60-5	5-String/Long	.045 .065 .080 .100 .130	\$53.49
PSS60-5SL	5-String/Super Long	.045 .065 .080 .100 .130	\$61.99
PSS60-6	6-String/Long	.032 .045 .065 .080 .100 .130	\$61.99
PSS60-6SL	6-String/Super Long	.032 .045 .065 .080 .100 .130	\$71.49
PSS70	Long	.045 .065 .085 .105	\$40.99
PSS70SL	Super Long	.045 .065 .085 .105	\$46.99
PSS80	Long	.050 .070 .085 .105	\$40.99
PSS80SL	Super Long	.050 .070 .085 .105	\$46.99

## Electric Bass

### Chromes Flat Wound

Complex combinations of interlocking underwindings on a hex core build a foundation for the delicate outer ribbon winding. After this winding is applied, each string is ground and polished to produce an incredibly smooth surface.



ITEM #	SCALE	GAUGES	RETAIL
ECB80	Long	.040 .060 .075 .095	\$55.99
ECB80SL	Super Long	.040 .060 .075 .095	\$65.49
ECB81	Long	.045 .065 .080 .100	\$55.99
ECB81SL	Super Long	.045 .065 .080 .100	\$65.49
ECB81-5	5-String/Long	.045 .065 .080 .100 .132	\$79.99
ECB81-5SL	5-String/Super Long	.045 .065 .080 .100 .132	\$96.99
ECB82	Long	.050 .070 .085 .105	\$55.99

## Electric Bass

### Half Round Heat Treated Stainless Steel

Half Round bass strings are round wound with 430 stainless steel, then precision ground, leaving the outer surface smooth. They retain the flexibility and most of the tonal characteristics of round wound strings. New heat treating process increases brightness.



ITEM #	SCALE	GAUGES	RETAIL
EHR70	Long	.040 .060 .075 .095 . . . . .	\$48.99
EHR71	Long	.045 .065 .080 .100 . . . . .	\$48.99
EHR71SL	Super Long	.045 .065 .080 .100 . . . . .	\$57.99
EHR71S	Short	.045 .065 .080 .100 . . . . .	\$48.99
EHR71M	Medium	.045 .065 .080 .100 . . . . .	\$48.99
EHR71-5	5-string/Long	.045 .065 .080 .100 .130 . . . .	\$68.99
EHR71-5SL	Super Long	.045 .065 .080 .100 .130 . . . .	\$81.99
EHR71-6	Long	.030 .045 .065 .080 .100 .130 .	\$76.99
EHR72	Long	.050 .070 .085 .105 . . . . .	\$48.99
EHR73	Long	.055 .075 .090 .110 . . . . .	\$48.99

## Electric Guitar/Bass

### Nickel Round Wound

30" Scale. A 6-string guitar/bass is normally played with a pick and is tuned like a guitar except at an octave lower. Several manufacturers make this instrument, including Danelectro, Fender, and Jerry Jones Guitars.



XL155	Electric Guitar/Bass-Jerry Jones	.024-.084 . . . . .	\$20.99
XL156	Electric Guitar/Bass-Fender Bass VI	.024-.084 . . . . .	\$20.99
XL157	Electric Guitar/Baritone-Danelectro™	.014-.068 . . . . .	\$13.99

### String tensions were measured at the scale lengths listed below:

Instrument	inches	mm
Bass Super Long Scale	36	914
Bass Long Scale	34	864
Bass Medium Scale	32	813
Bass Short Scale	30	762
Guitar Electric	25 1/2	648
Guitar Acoustic	25 1/2	648
Guitar Classic	25 1/2	648
Guitar Tenor	23	584
Ukulele	13 5/8	346
Baritone Ukulele	19	483
Banjo 5-String	26 1/4	667
Banjo Tenor	23	584
Mandolin	13 7/8	352
Mandola	15 7/8	403
Mandocello	25	635
Mandobass	42	1067
Pedal Steel	24 1/4	616
Resophonic Slide Guitar	24 5/8	626
Dulcimer	27	686
Oud	23 1/4	590
Cuatro	21 3/4	552
Bouzouki	26 1/2	673
Fiddle 4/4	13	328

## Determining the scale of your bass...

1 - mark the lowest pitch string at the nut with a marker (figure a).



2 - Remove the string and measure the distance from the inner edge of the ballend (figure b) to the mark (figure c). Record this length as 'X' and refer to the chart below.



## String Scale Determination Chart

LENGTH 'X'	STRING SCALE
up to 32"	D'Addario short scale
32" - 34"	D'Addario medium scale
34" - 36"	D'Addario long scale
36" - 38"	D'Addario super long scale

**Acoustic Bass****Phosphor Bronze Round Wound**

Phosphor bronze is popular in the acoustic market for its resilient tone and boomy bass while affording players a smooth, consistent surface for picking or plucking.



ITEM #	SCALE	GAUGES	RETAIL
EPBB170	Long	.045 .065 .080 .100	\$43.99

**Banjo****5-String and Tenor**

With a strong selection of gauges and alloys, D'Addario banjo strings have become the choice of players like Bob Carlin, John Hartford, Rob McCoury, and Allison Brown.



J60	5-String/Light/Nickel	\$6.49
J61	5-String/Medium/Nickel	\$6.49
J63	Tenor Banjo/Nickel	\$5.99
J69	5-String/Light/Phosphor Bronze	\$6.49
J69B	5-String/Ball End/Phosphor Bronze	\$6.49

**Other Sets**

**Dulcimer, Ukulele, Tenor Guitar, Oud, Bouzouki, Cuatro, Fiddle, and Cavaquinho**



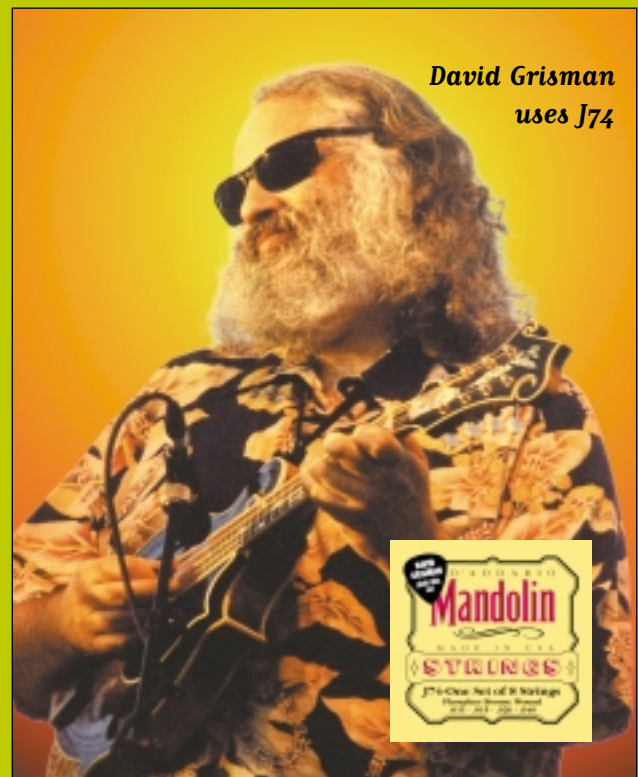
J64	Dulcimer/4-String	\$5.49
J65	Ukulele	\$6.99
J66	Tenor Guitar	\$5.99
J68	Baritone Ukulele	\$8.49
J93	Cavaquinho	\$5.49
J94	Requinto	\$12.49
J95	Oud/11-String	\$21.99
J96	Cuatro-Puerto Rico	\$21.99
J97	Bouzouki	\$8.49
J98	Cuatro-Venezuela	\$5.49
J90	Fiddle	\$24.75

**Mandolin Family****Mandolin, Mandola, Mandocello & Mandobass**

D'Addario mandolin family strings are the choice of David Grisman, Mike Marshall, Ricky Skaggs, Ronnie McCoury, Doyle Lawson and more. Mandolin Flat Tops are excellent for recording and popular with mandolin orchestra players.

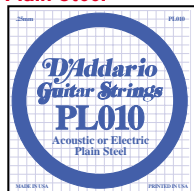


J62	Mandolin - 80/20 Bronze	\$10.99
J67	Mandolin/Nickel	\$10.99
J74	Mandolin/Phosphor Bronze - Medium	\$11.49
FT74	Mandolin/Flat Tops/Phosphor Bronze	\$22.49
J75	Mandolin/Phosphor Bronze - Med./Heavy	\$11.49
J76	Mandola/Phosphor Bronze	\$14.99
FT76	Mandola/Flat Tops/Phosphor Bronze	\$27.49
J78	Mandocello/Phosphor Bronze	\$26.99
J79	Mandobass/Copper Coated Steel	\$51.49



**David Grisman**  
uses J74



Acoustic/Electric  
Plain Steel

PL007	\$1.15
PL008	\$1.15
PL0085	\$1.15
PL009	\$1.15
PL0095	\$1.15
PL010	\$1.15
PL0105	\$1.15
PL011	\$1.15
PL0115	\$1.15
PL012	\$1.15
PL013	\$1.15
PL0135	\$1.15
PL014	\$1.15
PL015	\$1.15
PL016	\$1.15
PL017	\$1.15
PL018	\$1.15
PL019	\$1.15
PL020	\$1.15
PL022	\$1.15
PL024	\$1.15
PL026	\$1.15

Acoustic/Electric  
Plain Steel  
Soldered Twist

KPL008	\$1.90
KPL009	\$1.90
KPL010	\$1.90
KPL011	\$1.90
KPL012	\$1.90
KPL013	\$1.90
KPL014	\$1.90
KPL015	\$1.90
KPL016	\$1.90
KPL017	\$1.90
KPL020	\$1.90

Acoustic/Electric  
Steinberger™  
Round Wound

SPL009	\$2.05
SPL010	\$2.05
SPL011	\$2.05
SPL013	\$2.05
SPL016	\$2.05
SPL017	\$2.05

Acoustic/Electric  
XL Nickel  
Round Wound

NW017	\$2.05
NW018	\$2.05
NW019	\$2.05
NW020	\$2.05
NW021	\$2.05
NW022	\$2.05
NW024	\$2.05
NW026	\$2.05
NW028	\$2.15
NW030	\$2.15
NW032	\$2.15
NW034	\$2.15
NW036	\$2.15
NW038	\$2.45
NW039	\$2.45
NW042	\$2.45
NW044	\$2.45
NW046	\$2.45
NW048	\$2.45
NW049	\$2.45
NW052	\$2.95
NW054	\$2.95
NW056	\$2.95
NW059	\$2.95
NW060	\$2.95
NW062	\$3.60
NW064	\$3.60
NW066	\$3.60
NW068	\$3.60
NW070	\$4.50
NW072	\$4.50
NW074	\$4.50
NW080	\$6.90

Acoustic/Electric  
Steinberger™  
Round Wound

SNW024	\$2.95
SNW026	\$2.95
SNW032	\$3.10
SNW036	\$3.10
SNW042	\$3.70
SNW046	\$3.70

Electric Guitar  
Half Round  
Stainless Steel

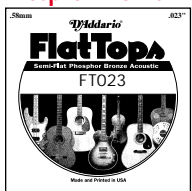
HRG022	\$2.95
HRG024	\$2.95
HRG026	\$2.95
HRG030	\$3.25
HRG032	\$3.25
HRG036	\$3.25
HRG039	\$4.05
HRG042	\$4.05
HRG046	\$4.05
HRG052	\$4.15
HRG056	\$4.15

Electric Guitar  
Chromes  
Flat Wound

CG020	\$3.35
CG022	\$3.35
CG024	\$3.35
CG026	\$3.35
CG028	\$3.75
CG030	\$3.75
CG032	\$3.75
CG035	\$3.75
CG038	\$4.10
CG040	\$4.10
CG042	\$4.10
CG045	\$4.10
CG048	\$4.25
CG050	\$4.25
CG052	\$4.25
CG056	\$4.25
CG065	\$6.10

Acoustic Guitar  
Phosphor Bronze  
Round Wound

PB020	\$2.45
PB021	\$2.45
PB022	\$2.45
PB023	\$2.45
PB024	\$2.45
PB025	\$2.45
PB026	\$2.45
PB027	\$2.45
PB029	\$3.00
PB030	\$3.00
PB032	\$3.00
PB034	\$3.00
PB035	\$3.00
PB036	\$3.00
PB039	\$3.00
PB042	\$3.00
PB045	\$3.00
PB047	\$3.00
PB049	\$3.30
PB052	\$3.30
PB053	\$3.30
PB056	\$3.30
PB059	\$3.30
PB060	\$3.30
PB062	\$3.70
PB064	\$3.70
PB066	\$3.70
PB070	\$6.50

Acoustic Guitar  
Semi-Flat  
Phosphor Bronze

FT023	\$3.25
FT024	\$3.25
FT026	\$3.25
FT028	\$3.55
FT030	\$3.55
FT032	\$3.55
FT035	\$3.55
FT036	\$3.55
FT039	\$4.25
FT042	\$4.25
FT044	\$4.25
FT045	\$4.25
FT047	\$4.35
FT053	\$4.35
FT056	\$4.35

Acoustic Guitar  
80/20 Bronze  
Round Wound

BW020	\$2.15
BW021	\$2.15
BW022	\$2.15
BW023	\$2.15
BW024	\$2.15
BW025	\$2.15
BW026	\$2.15
BW027	\$2.15
BW029	\$2.45
BW030	\$2.45
BW032	\$2.45
BW034	\$2.45
BW035	\$2.45
BW036	\$2.45
BW039	\$2.45
BW042	\$2.45
BW045	\$2.45
BW047	\$2.45
BW049	\$2.65
BW052	\$2.65
BW053	\$2.65
BW056	\$2.65
BW059	\$2.65

Electric Guitar  
Stainless Steel  
Round Wound

XSG018	\$2.05
XSG020	\$2.05
XSG021	\$2.05
XSG022	\$2.05
XSG024	\$2.05
XSG026	\$2.05
XSG028	\$2.15
XSG030	\$2.15
XSG032	\$2.15
XSG034	\$2.15
XSG036	\$2.15
XSG038	\$2.45
XSG040	\$2.45
XSG042	\$2.45
XSG046	\$2.45
XSG048	\$2.45
XSG050	\$2.95
XSG052	\$2.95
XSG054	\$2.95
XSG056	\$2.95
XSG070	\$4.50

Loop End Strings  
Plain Steel

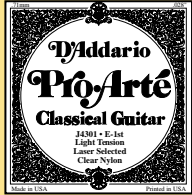
LE008	\$1.35
LE009	\$1.35
LE010	\$1.35
LE011	\$1.35
LE012	\$1.35
LE013	\$1.35
LE014	\$1.35
LE015	\$1.35
LE016	\$1.35
LE017	\$1.35
LE018	\$1.35

Nickel  
Round Wound

LE018w	\$2.40
LE020w	\$2.40
LE022w	\$2.40
LE023w	\$2.40
LE024w	\$2.40
LE026w	\$2.40
LE028w	\$2.40
LE030w	\$2.40
LE032w	\$2.50
LE034w	\$2.50
LE036w	\$2.50
LE038w	\$2.50
LE040w	\$2.50
LE042w	\$2.50
LE044w	\$2.50
LE046w	\$2.50
LE048w	\$2.50
LE049w	\$2.50
LE052w	\$3.45
LE054w	\$3.45
LE056w	\$3.45
LE059w	\$3.45

## Phosphor Bronze

LE018pb	\$2.55
LE020pb	\$2.55
LE022pb	\$2.55
LE023pb	\$2.55
LE024pb	\$2.55
LE026pb	\$2.55
LE028pb	\$2.55
LE030pb	\$2.55
LE032pb	\$2.55
LE034pb	\$2.65
LE036pb	\$2.65
LE038pb	\$2.65
LE040pb	\$2.65
LE042pb	\$3.35
LE045pb	\$3.35
LE047pb	\$3.35
LE049pb	\$3.75
LE052pb	\$3.75
LE053pb	\$3.75
LE056pb	\$3.75
LE059pb	\$3.75

**Classical Guitar  
Pro•Arté**

clear	J4301/E-1st . . . \$1.30
clear	J4302/B-2nd . . . \$1.40
clear	J4303/G-3rd . . . \$1.50
silver	J4304/D-4th . . . \$2.90
silver	J4305/A-5th . . . \$3.75
silver	J4306/E-6th . . . \$4.10
clear	J4401/E-1st . . . \$1.30
clear	J4402/B-2nd . . . \$1.40
clear	J4403/G-3rd . . . \$1.50
silver	J4404/D-4th . . . \$2.90
silver	J4405/A-5th . . . \$3.75
silver	J4406/E-6th . . . \$4.10
clear	J4501/E-1st . . . \$1.30
clear	J4502/B-2nd . . . \$1.40
clear	J4503/G-3rd . . . \$1.50
silver	J4504/D-4th . . . \$2.90
silver	J4505/A-5th . . . \$3.75
silver	J4506/E-6th . . . \$4.10
clear	J4601/E-1st . . . \$1.30
clear	J4602/B-2nd . . . \$1.40
clear	J4603/G-3rd . . . \$1.50
silver	J4604/D-4th . . . \$2.90
silver	J4605/A-5th . . . \$3.75
silver	J4606/E-6th . . . \$4.10
clear	J4701/E-1st . . . \$1.30
clear	J4702/B-2nd . . . \$1.40
clear	J4703/G-3rd . . . \$1.50
bronze	J4704/D-4th . . . \$2.90
bronze	J4705/A-5th . . . \$3.75
bronze	J4706/E-6th . . . \$4.10
clear	J4801/E-1st . . . \$1.30
clear	J4802/B-2nd . . . \$1.40
clear	J4803/G-3rd . . . \$1.50
bronze	J4804/D-4th . . . \$2.90
bronze	J4805/A-5th . . . \$3.75
bronze	J4806/E-6th . . . \$4.10
black	J4901/E-1st . . . \$1.30
black	J4902/B-2nd . . . \$1.40
black	J4903/G-3rd . . . \$1.50
silver	J4904/D-4th . . . \$2.90
silver	J4905/A-5th . . . \$3.75
silver	J4906/E-6th . . . \$4.10
black	J5001/E-1st . . . \$1.30
black	J5002/B-2nd . . . \$1.40
black	J5003/G-3rd . . . \$1.50
silver	J5004/D-4th . . . \$2.90
silver	J5005/A-5th . . . \$3.75
silver	J5006/E-6th . . . \$4.10
clear	J5101/E-1st . . . \$1.30
clear	J5102/B-2nd . . . \$1.40
clear	J5103/G-3rd . . . \$1.50
silver	J5104/D-4th . . . \$6.60
silver	J5105/A-5th . . . \$8.50
silver	J5106/E-6th . . . \$9.50

**Classical Guitar  
Pro•Arté**

(continued)

clear	J5201/B-1st . . . \$1.30
clear	J5202/F#-2nd . . . \$1.40
clear	J5203/D-3rd . . . \$1.50
silver	J5204/A-4th . . . \$2.45
silver	J5205/E-5th . . . \$2.95
silver	J5206/B-6th . . . \$3.75

**Classical Guitar  
Pro•Arté  
Composites**

silver	J4403C/G-3rd . . . \$4.95
silver	J4404C/D-4th . . . \$4.25
silver	J4405C/A-5th . . . \$4.35
silver	J4406C/E-6th . . . \$4.50
silver	J4503C/G-3rd . . . \$4.95
silver	J4504C/D-4th . . . \$4.25
silver	J4505C/A-5th . . . \$4.35
silver	J4506C/E-6th . . . \$4.50
silver	J4603C/G-3rd . . . \$4.95
silver	J4604C/D-4th . . . \$4.25
silver	J4605C/A-5th . . . \$4.35
silver	J4606C/E-6th . . . \$4.50

**Classical Guitar  
Pro•Arté Lightly  
Polished Composites**

silver	J4504LP/D-4th . . . \$6.50
silver	J4505LP/A-5th . . . \$6.35
silver	J4506LP/E-6th . . . \$6.35
silver	J4604LP/D-4th . . . \$6.50
silver	J4605LP/A-5th . . . \$6.35
silver	J4606LP/E-6th . . . \$6.35

**Classical Guitar  
D'Addario Classic**

clear	J2801/E-1st . . . \$1.25
clear	J2802/B-2nd . . . \$1.30
clear	J2803/G-3rd . . . \$1.35
silver	J2804/D-4th . . . \$12.50
silver	J2805/A-5th . . . \$15.50
silver	J2806/E-6th . . . \$17.75
clear	J2901/E-1st . . . \$1.25
clear	J2902/B-2nd . . . \$1.30
clear	J2903/G-3rd . . . \$1.35
silver	J2904/D-4th . . . \$2.60
silver	J2905/A-5th . . . \$3.05
silver	J2906/E-6th . . . \$3.75
clear	J3001/E-1st . . . \$1.25
clear	J3002/B-2nd . . . \$1.30
clear	J3003/G-3rd . . . \$1.35
silver	J3004/D-4th . . . \$2.60
silver	J3005/A-5th . . . \$3.05
silver	J3006/E-6th . . . \$3.75
clear	J3101/E-1st . . . \$1.25
clear	J3102/B-2nd . . . \$1.30
clear	J3103/G-3rd . . . \$1.35
silver	J3104/D-4th . . . \$2.60
silver	J3105/A-5th . . . \$3.05
silver	J3106/E-6th . . . \$3.75

**Classical Guitar  
Rectified Nylon**

NYL018 . . . . . \$1.35
NYL019 . . . . . \$1.35
NYL020 . . . . . \$1.35
NYL021 . . . . . \$1.35
NYL022 . . . . . \$1.35
NYL024 . . . . . \$1.35
NYL027 . . . . . \$1.35
NYL028 . . . . . \$1.35
NYL029 . . . . . \$1.35
NYL030 . . . . . \$1.40
NYL031 . . . . . \$1.40
NYL032 . . . . . \$1.40
NYL033 . . . . . \$1.40
NYL034 . . . . . \$1.40
NYL038 . . . . . \$1.45
NYL039 . . . . . \$1.45
NYL040 . . . . . \$1.45
NYL041 . . . . . \$1.45

**Silver plated  
Wound**

NYL019w . . . . . \$2.75
NYL020w . . . . . \$2.75
NYL022w . . . . . \$2.75
NYL024w . . . . . \$2.75
NYL025w . . . . . \$2.75
NYL026w . . . . . \$2.75
NYL028w . . . . . \$2.75
NYL029w . . . . . \$2.75
NYL030w . . . . . \$2.75
NYL031w . . . . . \$2.75
NYL033w . . . . . \$3.05
NYL034w . . . . . \$3.05
NYL035w . . . . . \$3.05
NYL036w . . . . . \$3.05
NYL040w . . . . . \$3.75
NYL041w . . . . . \$3.75
NYL043w . . . . . \$3.75
NYL045w . . . . . \$3.75
NYL048w . . . . . \$3.75
NYL050w . . . . . \$5.10
NYL052w . . . . . \$5.10
NYL054w . . . . . \$5.10
NYL056w . . . . . \$5.10

**Classical Guitar  
Classic Nylon**

clear	J2701 . . . . . \$0.85
clear	J2702 . . . . . \$0.90
clear	J2703 . . . . . \$0.95
silver	J2704 . . . . . \$1.65
silver	J2705 . . . . . \$2.00
silver	J2706 . . . . . \$2.35

**Folk Guitar  
Ball End Nylon**

clear	BEC028 . . . . . \$1.35
clear	BEC032 . . . . . \$1.45
clear	BEC040 . . . . . \$1.60
black	BEB028 . . . . . \$1.35
black	BEB032 . . . . . \$1.45
black	BEB040 . . . . . \$1.60
bronze	BEB031w . . . . . \$2.85
bronze	BEB037w . . . . . \$3.00
bronze	BEB045w . . . . . \$3.15
silver	BES031w . . . . . \$2.85
silver	BES037w . . . . . \$3.00
silver	BES045w . . . . . \$3.15

**Folk Guitar  
Silk & Steel**

J3505 . . . . . \$3.00
J3507 . . . . . \$3.30
J3509 . . . . . \$3.60
J3511 . . . . . \$4.15
J3512 . . . . . \$4.30
J4003 . . . . . \$3.00
J4004 . . . . . \$3.30
J4005 . . . . . \$3.60
J4006 . . . . . \$4.15

**Banjo  
Ball End**

J6901B . . . . . \$1.35
J6902B . . . . . \$1.35
J6903B . . . . . \$1.35
J6904B . . . . . \$2.40
J6905B . . . . . \$1.35

**Mandolin Family  
Mandolin**

J6201 . . . . . \$1.15
J6202 . . . . . \$1.15
J6203 . . . . . \$1.85
J6204 . . . . . \$2.00
J6701 . . . . . \$1.15
J6702 . . . . . \$1.15
J6703 . . . . . \$1.85
J6704 . . . . . \$2.00
J7401 . . . . . \$1.15
J7402 . . . . . \$1.15
J7403 . . . . . \$1.95
J7404 . . . . . \$2.05
J7501 . . . . . \$1.15
J7502 . . . . . \$1.15
J7503 . . . . . \$1.95
J7504 . . . . . \$2.05

**Flat Top  
Mandolin**

FT7401 . . . . . \$1.15
FT7402 . . . . . \$1.15
FT7403 . . . . . \$3.25
FT7404 . . . . . \$3.95

**Flat Top  
Mandola**

FT7601 . . . . . \$1.15
FT7602 . . . . . \$3.25
FT7603 . . . . . \$3.45
FT7604 . . . . . \$3.75

**Mandola**

J7601 . . . . . \$1.15
J7602 . . . . . \$1.85
J7603 . . . . . \$1.95
J7604 . . . . . \$2.80

**Mandocello**

J7801 . . . . . \$2.15
J7802 . . . . . \$2.60
J7803 . . . . . \$3.40
J7804 . . . . . \$5.00

**Mandobass**

J7901 . . . . . \$8.20
J7902 . . . . . \$10.00
J7903 . . . . . \$12.10
J7904 . . . . . \$19.85

**Other Strings  
Dulcimer**

J6401 . . . . . \$1.30
J6402 . . . . . \$1.30
J6403 . . . . . \$1.30
J6404 . . . . . \$2.35

**Ukulele**

J6501 . . . . . \$1.55
J6502 . . . . . \$1.70
J6503 . . . . . \$1.70
J6504 . . . . . \$1.55

**Tenor Guitar**

J6601 . . . . . \$1.05
J6602 . . . . . \$1.05
J6603 . . . . . \$1.50
J6604 . . . . . \$1.65

**Baritone Ukulele**

J6801 . . . . . \$1.60
J6802 . . . . . \$1.70
J6803 . . . . . \$2.55
J6804 . . . . . \$2.40

**Fiddle**

J9001 . . . . . \$2.40
J9002 . . . . . \$5.90
J9003 . . . . . \$8.15
J9004 . . . . . \$8.50

**Cavaquinho**

J9301 . . . . . \$1.05
J9302 . . . . . \$1.05
J9303 . . . . . \$1.60
J9304 . . . . . \$1.60

**Requinto**

J9401 . . . . . \$1.20
J9402 . . . . . \$1.25
J9403 . . . . . \$1.35
J9404 . . . . . \$3.25
J9405 . . . . . \$3.25
J9406 . . . . . \$3.05

**Oud/11-String**

J9501/2 . . . . . \$1.20
J9503/4 . . . . . \$1.20
J9505/6 . . . . . \$6.00
J9507/8 . . . . . \$6.00
J9509/10 . . . . . \$5.00
J9511 . . . . . \$3.60

**Cuatro  
Puerto Rico**

J9601 . . . . . \$1.10
J9602 . . . . . \$1.10
J9603 . . . . . \$1.10
J9604 . . . . . \$1.10
J9605 . . . . . \$2.80
J9606 . . . . . \$2.80
J9607 . . . . . \$3.40
J9608 . . . . . \$1.10
J9609 . . . . . \$4.00
J9610 . . . . . \$2.85

**Cuatro  
Venezuela**

J9801 . . . . . \$1.40
J9802 . . . . . \$1.30
J9803 . . . . . \$1.30
J9804 . . . . . \$1.40

**Electric Bass  
XL Nickel Wound****Long Scale**

XLB018p	\$2.50
XLB020p	\$2.50
XLB028w	\$6.05
XLB032	\$6.05
XLB035	\$7.45
XLB040	\$7.45
XLB042	\$7.45
XLB045	\$7.45
XLB050	\$7.45
XLB052	\$7.45
XLB055	\$7.45
XLB060	\$8.90
XLB065	\$8.90
XLB070	\$8.90
XLB075	\$9.60
XLB080	\$9.60
XLB085	\$9.60
XLB090	\$11.65
XLB095	\$11.65
XLB100	\$11.65
XLB105	\$11.65
XLB110	\$11.65
XLB120	\$12.95
XLB125	\$12.95
XLB130	\$12.95
XLB135	\$12.95
XLB145	\$13.30

**Super Long Scale**

XB040SL	\$8.55
XB045SL	\$8.55
XB050SL	\$8.55
XB060SL	\$10.15
XB065SL	\$10.15
XB070SL	\$10.15
XB075SL	\$10.65
XB080SL	\$10.65
XB085SL	\$10.65
XB090SL	\$13.30
XB095SL	\$13.30
XB100SL	\$13.30
XB105SL	\$13.30
XB110SL	\$13.30
XB125SL	\$15.30
XB130SL	\$15.30
XB145SL	\$15.30

**Medium Scale**

XB040M	\$7.45
XB045M	\$7.45
XB050M	\$7.45
XB060M	\$8.90
XB065M	\$8.90
XB070M	\$8.90
XB075M	\$9.60
XB080M	\$9.60
XB085M	\$9.60
XB095M	\$11.65
XB100M	\$11.65
XB105M	\$11.65

**Electric Bass  
XL Nickel Wound  
(continued)  
Short Scale**

XB045S	\$7.45
XB050S	\$7.45
XB065S	\$8.90
XB070S	\$8.90
XB080S	\$9.60
XB085S	\$9.60
XB100S	\$11.65
XB105S	\$11.65

**Tapered Long Scale**

XLB120T	\$15.55
XLB125T	\$15.55
XLB130T	\$15.55
XLB135T	\$15.55
XLB145T	\$15.95

**Tapered  
Super Long Scale**

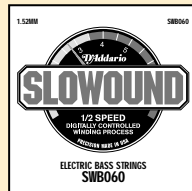
XB125TSL	\$18.35
XB130TSL	\$18.35
XB145TSL	\$18.35

**Electric Bass  
Steinberger™**

SXL045	\$11.25
SXL050	\$11.25
SXL065	\$13.25
SXL070	\$13.25
SXL080	\$15.45
SXL085	\$15.45
SXL100	\$17.50
SXL105	\$17.50
SXL130	\$19.35

**Electric Bass  
Nickel Wound  
Guitar/Bass**

NWB024	\$2.00
NWB034	\$2.10
NWB044	\$2.45
NWB056	\$2.95
NWB072	\$4.50
NWB072-F6	\$4.50
NWB084	\$6.90
NWB084-F6	\$6.90

**Electric Bass  
Slowound****Long Scale**

SWB032	\$7.25
SWB040	\$8.95
SWB045	\$8.95
SWB050	\$8.95
SWB060	\$10.95
SWB065	\$10.95
SWB070	\$10.95
SWB075	\$11.50
SWB080	\$11.50
SWB085	\$11.50
SWB090	\$13.90
SWB095	\$13.90
SWB100	\$13.90
SWB105	\$13.90
SWB110	\$13.90
SWB130	\$15.50

**Super Long Scale**

SWB032SL	\$8.35
SWB040SL	\$10.30
SWB045SL	\$10.30
SWB050SL	\$10.30
SWB060SL	\$12.50
SWB065SL	\$12.50
SWB070SL	\$12.50
SWB075SL	\$12.75
SWB080SL	\$12.75
SWB085SL	\$12.75
SWB090SL	\$15.85
SWB095SL	\$15.85
SWB100SL	\$15.85
SWB105SL	\$15.85
SWB110SL	\$15.85
SWB130SL	\$18.35

**Electric Bass  
Chromes  
Flat Wound****Long Scale**

CB040	\$10.40
CB045	\$10.40
CB050	\$10.40
CB055	\$10.40
CB060	\$13.85
CB065	\$13.85
CB070	\$13.85
CB075	\$15.15
CB080	\$15.15
CB085	\$15.15
CB090	\$15.15
CB095	\$16.95
CB100	\$16.95

**Electric Bass  
Chromes  
Flat Wound  
(continued)  
Long Scale**

CB105	\$16.95
CB110	\$16.95
CB132	\$29.65

**Super Long Scale**

CB040SL	\$12.00
CB045SL	\$12.00
CB060SL	\$16.00
CB065SL	\$16.00
CB075SL	\$17.90
CB080SL	\$17.90
CB095SL	\$19.60
CB100SL	\$19.60
CB132SL	\$34.10

**Electric Bass  
Half Round  
Stainless Steel****Long Scale**

SHR030	\$7.25
SHR040	\$9.20
SHR045	\$9.20
SHR050	\$9.20
SHR055	\$9.20
SHR060	\$10.70
SHR065	\$10.70
SHR070	\$10.70
SHR075	\$12.80
SHR080	\$12.80
SHR085	\$12.80
SHR090	\$16.35
SHR095	\$16.35
SHR100	\$16.35
SHR105	\$16.35
SHR110	\$16.35
SHR130	\$18.95

**Super Long Scale**

SH045SL	\$10.60
SH065SL	\$12.30
SH080SL	\$14.75
SH100SL	\$18.80
SH130SL	\$21.85

**Medium Scale**

SH045M	\$9.20
SH065M	\$10.70
SH080M	\$12.80
SH100M	\$16.35

**Short Scale**

SH045S	\$9.20
SH065S	\$10.70
SH080S	\$12.80
SH100S	\$16.35

**Electric Bass  
Prism Solid  
Stainless Steel****Long Scale**

PSS032	\$6.50
PSS040	\$8.00
PSS045	\$8.00
PSS050	\$8.00
PSS055	\$8.00
PSS060	\$9.50
PSS065	\$9.50
PSS070	\$9.50
PSS075	\$10.25
PSS080	\$10.25
PSS085	\$10.25
PSS090	\$12.50
PSS095	\$12.50
PSS100	\$12.50
PSS105	\$12.50
PSS110	\$12.50
PSS125	\$13.95
PSS130	\$13.95
PSS145	\$13.95

**Super Long Scale**

PSS032SL	\$7.50
PSS040SL	\$9.25
PSS045SL	\$9.25
PSS050SL	\$9.25
PSS060SL	\$10.90
PSS065SL	\$10.90
PSS070SL	\$10.90
PSS075SL	\$11.40
PSS080SL	\$11.40
PSS085SL	\$11.40
PSS090SL	\$14.30
PSS095SL	\$14.30
PSS100SL	\$14.30
PSS105SL	\$14.30
PSS110SL	\$14.30
PSS130SL	\$16.50

**Medium Scale**

PSS045M	\$8.00
PSS065M	\$9.50
PSS080M	\$10.25
PSS100M	\$12.50

**Short Scale**

PSS045S	\$8.00
PSS065S	\$9.50
PSS080S	\$10.25
PSS100S	\$12.50

**Acoustic Bass  
Phosphor Bronze  
Wound**

PBB045	\$8.90
PBB065	\$10.65
PBB080	\$11.10
PBB100	\$13.80
PBB130	\$15.40



## Single String Kits



The product mix in each single string kit has been created using actual sales statistics accumulated over time. Each kit is an accurate representation of how each string will sell. You can feel confident that you are not purchasing too much inventory of slow moving items. For a complete listing of kit contents contact your sales representative. We have also added a completely new assortment of 227 of our most popular Pro•Arté and D'Addario Classic single strings, a must for every serious guitar department.

- PL100** 300 plain steel strings in diameters from .007-.026 for acoustic or electric guitars. Emphasis on more popular numbers - includes half sizes.  
retail value: \$345.00
- NW100** Nickel Wound String Kit - 137 strings in diameters from .017-.059. Exact replacements for all wound strings in XL sets.  
retail value: \$305.05
- EG100** Combo Nickel Wound and Plain Steel Starter Kit - 185 guitar strings in gauges from .008-.018 plain steel and .018-.056 (XL) nickel wound.  
retail value: \$299.25
- PB100** Phosphor Bronze Wound String Kit - 130 wound strings for acoustic guitar in diameters from .020-.059  
retail value: \$352.85
- AG100** Acoustic String Starter Kit - 145 guitar strings in diameters from .008-.018 plain steel and .023-.056 phosphor bronze wound.  
retail value: \$279.00
- BW100** 80/20 Bronze Wound String Kit - 130 wound strings for acoustic guitar in diameters from .020-.059.  
retail value: \$298.40
- NYL200** Nylon Guitar String Kit - 113 plain and wound on nylon strings for classic or folk guitar. Includes clear nylon, silverplated wnd. and ball end nylon.  
retail value: \$246.85
- NYL300** An assortment of 227 of our most popular Pro•Arté and D'Addario Classic single strings.  
retail value: \$610.20
- LE100** Loop End Plain Steel and Nickel Wound Kit - 200 loop end strings 46" long in diameters from .008-.018 plain steel and .018-.040 nickel wound.  
retail value: \$323.90
- XL250** XL Nickel Round Wound Bass Kit - 60 plain steel and nickel wound long scale electric bass strings. Good for creating custom gauge bass sets.  
retail value: \$553.85
- SRGE** Empty wood box for guitar singles.\*
- SRBE** Empty wood box for bass singles.\*

\*call for pricing

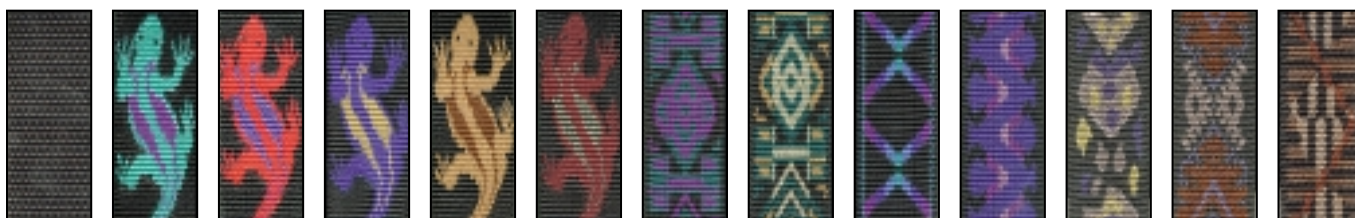
## String Set Displays



- EXL30** 30-sets of XL electric guitar strings:  
15 EXL110 and 15 EXL120 contained in spring-loaded display.  
retail value: \$269.70
- EPA30** 30-sets of Pro•Arté classical guitar strings:  
15 EJ45 and 15 EJ46 contained in spring-loaded display.  
retail value: \$419.70
- EPB30** 30-sets of Phosphor Bronze guitar strings:  
15 EJ16 and 15 EJ17 contained in spring-loaded display.  
retail value: \$374.70
- EXLB15** 15-sets of XL bass strings:  
10 EXL170 and 5 EXL160 contained in spring-loaded display.  
retail value: \$554.85
- PSSB30** 30-sets assortment of Prism bass strings, includes 4 different sets:  
10 PSS60, 5 PSS70, 10 PSS80, & 5 PSS60-5 contained in spring-loaded display.  
retail value: \$1,292.20
- CSD1** Countertop string display  
retail value: \$377.73
- GDE2** Spring-loaded guitar string display rack.\*
- BDE2** Spring-loaded bass string display rack.\*

## 30 Series

**1 3/4" (30mm) wide with shoulder pad.** 30P have standard connectors \$18.99; 30Q have quick-release buckles \$21.99.



30P000 30Q000 black	30P001 30Q001 lizard-purp./gm.	30P002 30Q002 lizard-blue/red	30P003 30Q003 lizard-blue/gold	30P004 30Q004 lizard-brwn./tan	30P005 30Q005 liz.-olive/maroon	30P006 30Q006 purple tapestry	30P007 30Q007 green tapestry	30P008 30Q008 apache star	30P009 30Q009 blue snake	30P010 30Q010 bear paw	30P011 30Q011 mayan	30P012 30Q012 brown helix
---------------------------	--------------------------------------	-------------------------------------	--------------------------------------	--------------------------------------	---------------------------------------	-------------------------------------	------------------------------------	---------------------------------	--------------------------------	------------------------------	---------------------------	---------------------------------

## 44 Series

**1 3/4" (44mm) wide with shoulder pad.**

44P have standard connectors \$22.99

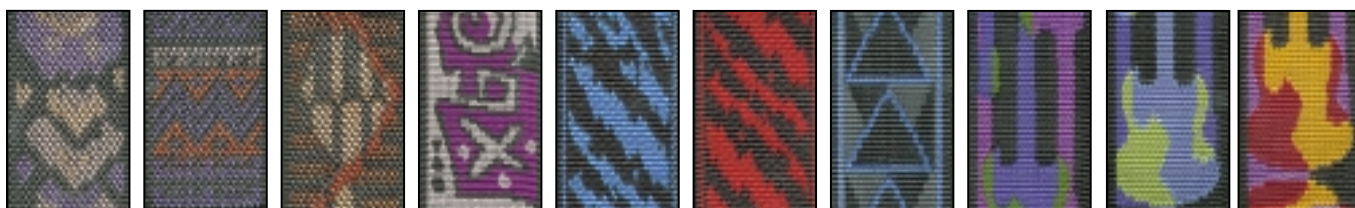
44Q have quick-release buckles \$26.99

**NEW!**

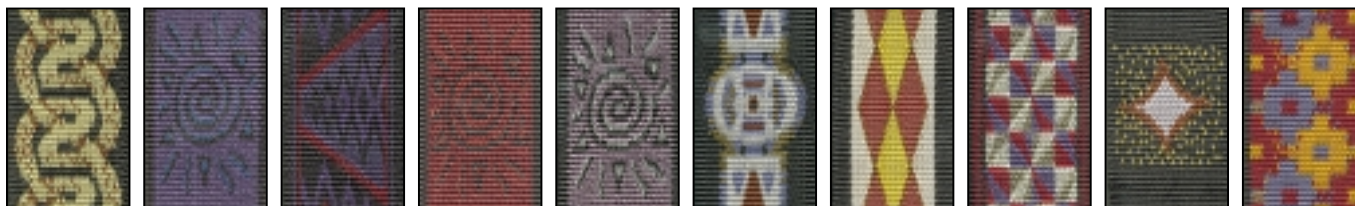
44PL have Planet Lock<sup>®</sup> System \$26.99  
Patent # 6,032,339



44P000 44Q000 44PL000 black	44P001 44Q001 44PL001 lizard-purple/green	44P002 44Q002 44PL002 lizard-blue/red	44P003 44Q003 lizard-blue/gold	44P004 44Q004 lizard-brown/tan	44P005 44Q005 lizard-olive/maroon	44P006 44Q006 purple tapestry	44P007 44Q007 green tapestry	44P008 44Q008 44PL008 apache star	44P009 44Q009 blue snake
--------------------------------------	----------------------------------------------------	------------------------------------------------	--------------------------------------	--------------------------------------	-----------------------------------------	-------------------------------------	------------------------------------	--------------------------------------------	--------------------------------



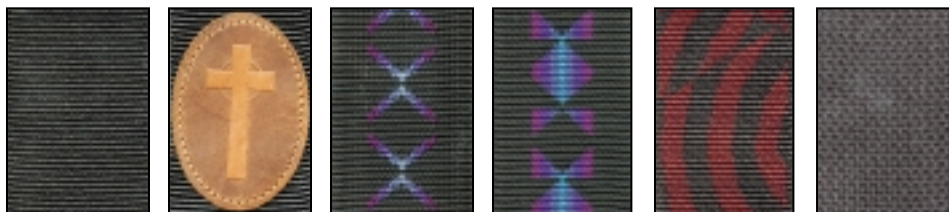
44P010 44Q010 44PL010 bear paw	44P011 44Q011 44PL011 mayan	44P012 44Q012 brown helix	44P023 44Q023 purple haze	44P024 44Q024 blue zebra	44P025 44Q025 red zebra	44P026 44Q026 turquoise triangle	44P027 44Q027 44PL027 guitars-purple/green	44P028 44Q028 guitars-blue/green	44P029 44Q029 guitars-orange/maroon
-----------------------------------------	--------------------------------------	---------------------------------	---------------------------------	--------------------------------	-------------------------------	----------------------------------------	-----------------------------------------------------	----------------------------------------	-------------------------------------------



44P031 44Q031 44PL031 celtic chain-black	44P051 44Q051 44PL051 blue sun	44P053 44Q053 native american	44P055 44Q055 red sun	44P056 44Q056 grey sun	44P057 44Q057 navajo	44P059 44Q059 44PL059 diamond back	44P060 44Q060 stars & stripes-maroon	44P061 44Q061 aboriginal star	44P063 44Q063 incan star
---------------------------------------------------	-----------------------------------------	-------------------------------------	-----------------------------	------------------------------	----------------------------	---------------------------------------------	--------------------------------------------	-------------------------------------	--------------------------------

## 50 Series

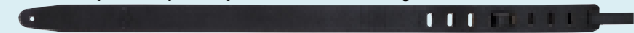
**2" (50mm) wide strap, does not include shoulder pad.** 50N have standard leather connectors \$13.99; 50Q have quick-release buckles \$14.99. 50C is a 2" wide cotton strap \$9.99.



50N000 50Q000 black	50N000C 50Q000C black with cross	50N008 50Q008 apache star	50N033 50Q033 mosaic	50N036 50Q036 red whirl	50C000 black
---------------------------	----------------------------------------	---------------------------------	----------------------------	-------------------------------	-----------------

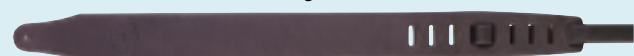
## Planet Waves Premium Leather Straps

These full-grain leather straps are made from the finest quality chrome-tanned leather, blended with the best vegetable-tanned leather methods to produce the most unique and superior products of their kind. The XL strap is reversible, with full-grain leather on both sides, stitched and embossed by expert seamsters. Like fine shoes, these straps require some breaking in, but will soon custom fit your shoulder like no other strap can. The XS strap is full-grain leather on top with soft, plush suede on the bottom, stitched and embossed by expert seamsters. In time, the strap will custom fit your shoulder, and will provide an unmatched level of comfort and support. Available in 1½, 2½ and 3" widths. The XT straps are reptilian prints made from full-grain leather.



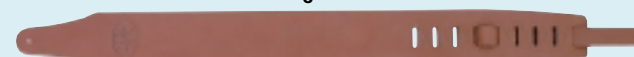
**15XL series** – 1½" wide reversible double full-grain leather strap  
15XL00 black/cognac \$47.50; 15XL01 chocolate/cognac \$47.50

**15XS series** – 1½" wide full-grain leather/suede strap  
15XS00 black \$37.50; 15XS01 cognac \$37.50; 15XS02 chocolate \$37.50



**25XL00 series** – 2½" wide reversible double full-grain leather  
25XL00 black/cognac \$60.00; 25XL01 chocolate/cognac \$60.00

**25XS00 series** – full-grain leather/suede strap  
25XS00 black \$45.00; 25XS01 cognac \$45.00; 25XS02 chocolate \$45.00



**30XL series** – 3" wide reversible double full-grain leather  
30XL00 black/cognac \$67.50; 30XL01 cognac/chocolate \$67.50

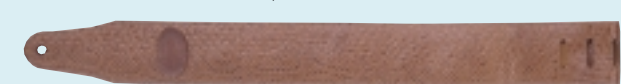
**30XS series** – 3" wide full-grain leather/suede strap  
30XS00 black \$55.00; 30XS01 cognac \$55.00; 30XS02 chocolate \$55.00



**NEW! XT03 series** – Full-grain leather strap with crocodile design  
15XT03 - 1½" wide \$37.50; 25XT03 2½" wide \$45.00



**NEW! XT04 series** – Full-grain leather strap with jelly bean design  
15XT04 - 1½" wide \$37.50; 25XT04 2½" wide \$45.00



**NEW! XT05 series** – Full-grain leather strap with two-tone python design  
15XT05 - 1½" wide \$37.50; 25XT05 2½" wide \$45.00



**NEW! XT06 series** – Full-grain leather strap with black python design  
15XT06 - 1½" wide \$37.50; 25XT06 2½" wide \$45.00



**NEW! XT07 series** – Full-grain leather strap with alligator design  
15XT07 - 1½" wide \$37.50; 25XT07 2½" wide \$45.00



**25FB series** – 2½" wide football leather /suede 25FB01 \$45.00



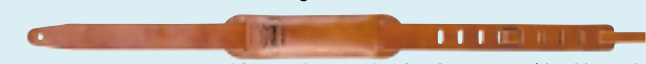
**25BB series** – 2½" wide basketball leather /suede 25BB01 \$45.00

## Leather Straps

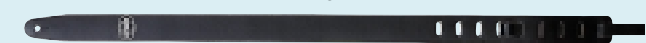
Planet Waves leather guitar straps are of the highest quality leather available, and are as comfortable as they are durable. Our goal was to produce the most comfortable leather straps with a quality that is unmatched, and you don't have to look hard to see the difference.



**15L series** – 1½" wide 100% genuine leather strap  
15L00 black \$13.30; 15L01 cognac \$13.30

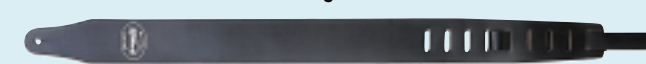


**15LP series** – 1½" wide 100% genuine leather strap w/shoulder pad  
15LP00 black \$25.00; 15LP01 cognac \$25.00



**15SL series** – 1½" wide soft garment leather on top, suede on the bottom  
15SL00 black \$25.00; 15SL01 cognac \$25.00

**15SS series** – 1½" wide soft, durable 2-ply suede strap  
15SS00 black \$25.00; 15SS01 cognac \$25.00



**25L series** – 2½" wide 100% genuine leather strap  
25L00 black \$13.30; 25L01 cognac \$13.30



**25LS series** – 2½" wide 100% genuine leather strap w/stitching along the perimeter  
25LS00 black \$17.50; 25LS01 cognac \$17.50



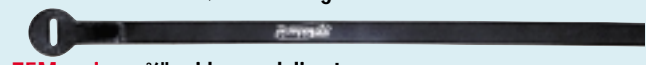
**25SS series** – 2½" wide soft, durable 2-ply suede strap  
25SS00 black \$30.00; 25SS01 cognac \$30.00



**25SL series** – 2½" wide, soft garment leather on top, suede on the bottom  
25SL00 black \$32.90; 25SL01 cognac \$32.90



**58LP series** – ¾" wide retro style 100% genuine leather strap w/ shoulder pad  
58LP00 black \$29.00; 58LP01 cognac \$29.00



**75M series** – ¾" wide mandolin strap  
75M00 black \$13.00; 75M01 cognac \$13.00



## DGS series

D'Addario's extra long polypropylene guitar straps offer up to 6" more room for adjustment. Constructed of high quality, 2" wide polypropylene webbing with leather connectors, these straps are a cost-effective alternative to more expensive nylon and leather straps. These high-quality, 62" long guitar straps are available in these 8 popular colors.

**2" (50mm) wide extra-long polypropylene strap.** DGS have standard connectors \$5.95; DGSQ have quick-release buckles.\$7.99



DGS100  
DGSQ100  
black



DGS101  
DGSQ101  
red



DGS102  
DGSQ102  
blue



DGS105  
DGSQ105  
silver



DGS108  
DGSQ108  
olive



DGS109  
DGSQ109  
maroon



DGS110  
DGSQ110  
navy



DGS111  
DGSQ111  
purple

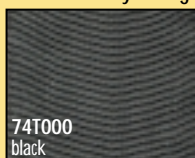
DGSP-1 - Set of 30 Black Straps \$178.50

DGSP-2 - Set of 30 Assorted Straps \$178.50; DGSP2 includes: 10 black, 4 red, 4 blue, 4 silver, 2 olive, 2 navy 2 maroon, and 2 purple

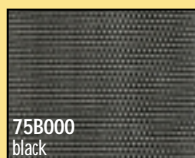
## Bass Guitar Straps

**74T is a 3" (74mm) wide tubular strap with an internal pad.** Available only in black, perfect for heavy bass guitars. 74T000 \$27.99

**75B is a 3" (75mm) basic wide strap made of polypropylene.** Available in black only. 75B000 \$9.99



74T000  
black

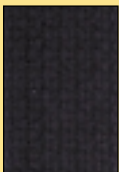


75B000  
black

## Saxophone Straps

Planet Waves saxophone straps have a specially designed curved hook that is easy to insert and remove, yet stays on the instrument much better than ordinary hooks. The unique quick-adjust button allows the musician to adjust the sax strap to a precise length, quickly and easily, and uses cord which is much less cumbersome than webbing. The Planet Waves Quick-Adjust Saxophone Strap allows the musician comfort, piece of mind, and the ability to focus on playing the saxophone.

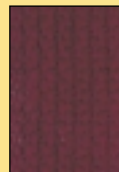
**1" (25mm) wide cotton strap.** \$7.99



black



dark green



maroon



navy



Close-up of special curved hook.

### Soprano/Alto

SSAC1000 Black  
SSAC1070 Dark Green  
SSAC1090 Maroon  
SSAC1100 Navy Blue

### Tenor/Baritone

SSBC1000 Black  
SSBC1070 Dark Green  
SSBC1090 Maroon  
SSBC1100 Navy Blue

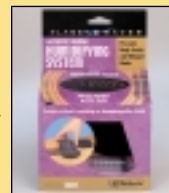
## GUITAR CARE

### Acoustic Guitar Humidifying System

The Planet Waves Guitar Humidifying System protects your guitars from damage even in the driest conditions.

With the moisture reservoir suspended inside the guitar body, the Planet Waves Guitar Humidifier System releases moisture evenly and slowly inside your guitar to maintain the proper humidity level. The Planet Waves guitar Humidifying System suspends itself between the strings on your guitar and never touches any part of the guitar body. There are no clips or fasteners to scratch or mar your guitar finish and the convenient dispensing syringe enables you to refill the reservoir without removing the humidifier from the guitar body.

Item# GH retail price: \$12.99



### Untreated Polish Cloth

Planet Waves polishing cloths are made from high-quality double napped cotton flannel, which picks up dust and dirt more effectively than ordinary polishing cloths, and lasts longer.

Item# PWPC2 retail price: \$2.50



### Pre-Treated Polish Cloth

Planet Waves pre-treated polishing cloths are produced with cleaner built into the cloth so there is no need for extra polish. Plus, the cloths are made from double napped cotton flannel, which picks up dust, dirt, and oil better than any other material.

Item# PWPC1 retail price: \$2.50

### Guitar Polish Spray

Planet Waves guitar polish removes dirt and residue and provides a clean, clear, and static free surface. The special formula safely removes surface residue such as smudges, fingerprints, and smears with just one application.

Item# PWGS retail price: \$5.99



### Guitar Polish/Conditioner

Planet Waves guitar conditioner is specially formulated to restore and maintain your guitar while providing a clean, clear, and static free surface. This polish has been researched and designed to meet the requirements of the professional luthier and will prolong the life of any guitar.

Item# PWGP retail price: \$6.99

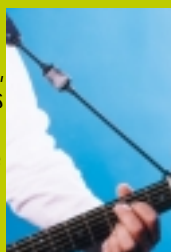
## GUITAR GEAR

### Acoustic Guitar Strap Quick-Release System

The Acoustic Guitar Strap Quick-Release System\* takes just seconds to set up, it won't come loose while playing, and the extra length of the cord keeps the guitar strap's webbing from interfering with the guitarist's hand when playing near the headstock. Best of all, just squeeze the quick-release and you're free: no knots to struggle with!

**DGS15** retail: \$4.75

\*Patent #5,868,293



### Ergonomic Guitar Peg Winder with built-in string stretcher

The Planet Waves Ergonomic Peg Winder with built-in string stretcher is precision molded with a solid body and overmolded with soft comfort grips. Its specially designed winder fits virtually all guitars, banjos, and mandolins. The handle has soft, sanoprene sides for a comfortable, yet firm grip and is ergonomically designed to better fit your hand. Plus, the Planet Waves Ergonomic Peg Winder has a built-in string stretcher, which makes tuning your guitar easier than ever before!

**PWPW1** retail: \$3.99



### Ergonomic Bass Peg Winder

with built-in string stretcher.

**PWPW1B** retail: \$4.99

### Pro-Winder

The ultimate restringing tool. Unlike ordinary peg winders, the patented Pro-Winder is a high-quality peg winder with a built-in clipper. Ergonomically designed with hardened tool steel wire cutters, the Pro-Winder with built-in clipper is the ALL-IN-ONE restringing tool, and it comes with an unconditional guarantee.

**DP0002** retail: \$12.99

\*Patent #5,505,116



### Bass Pro-Winder

**DP0002B** retail: \$12.99

\*Patent #5,505,116

## GRIPMASTER

All musicians have one common instrument among them...their hands. The Gripmaster has been designed to maintain the health and performance of the fingers and hands. Musicians spend many hours practicing for proficiency. All have a common goal to develop and maintain strength, control, endurance, coordination, and dexterity to ensure their competitive edge. Gripmaster is here to help them reach and accomplish their goal.



- Gripmaster is uniquely effective because each finger is isolated and flexed on an individual spring-loaded button.
- Gripmaster delivers total conditioning for each individual finger, the entire hand, wrist, and forearm.
- Beginners will leap months ahead in fingering strength and ability.
- Professionals can easily warm up before performances.
- Pocket size and durable. Work out anytime, anywhere - even when your instrument is not available.

Three color-coded models of graduated resistance:

Item#	Description	retail
<b>GMXL</b>	yellow - extra light tension 1.4 kgs./finger	\$.18.99
<b>GML</b>	blue - light tension 2.3 kgs./finger	\$.18.99
<b>GMM</b>	red - medium tension 3.2 kgs./finger	\$.18.99

### Comfort Fit Foam Ear Plugs

Planet waves comfort fit foam ear plugs are made from slow recovery pvc foam, and provide a noise reduction rating of 29 decibels. The soft foam plug equalizes the pressure within the ear canal as it expands, preventing shifting and discomfort.

**PWEP1** retail: \$.99

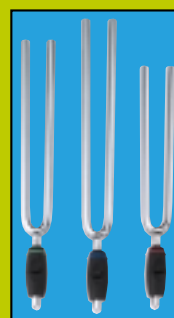
**PWEP100** - 100 pair of ear plugs in fishbowl .....\$100.00



### New! Tuning Fork with soft, ergonomic comfort handle

- Precision designed to offer extremely accurate tuning (440 Hz for A, 329.6 for E, 261.6 for C)
- Molded, ergonomic comfort handle is easy to hold while striking and placing on instrument surface
- Color-coded O-rings allow easy key identification

<b>PWTFA</b>	Tuning Fork-A	.....\$9.99
<b>PWTFC</b>	Tuning Fork-C	.....\$10.99
<b>PWTFE</b>	Tuning Fork-E	.....\$11.99



## GUITAR HARDWARE

**New! Auto-Trim Tuning Machines****With patent-pending built-in String Cutters****A Ned Steinberger Design**

- Patent-pending design cuts excess string while tuning guitar, eliminating need for extra string-cutting tools.
- Individual string clamps securely hold string in tuner – no need for multiple wraps around the tuning post.
- Excellent for aggressive tremolo use.
- Precision 18:1 gear ratio provides smooth, exact tuning, while virtually eliminating backlash and slippage.
- Limited lifetime guarantee.



<b>PWAT-6R1</b>	6 (In-Line) Auto-Trim Tuning Machines – Chrome Finish	..\$82.99
<b>PWAT-6L1</b>	6 (In-Line) Auto-Trim Tuning Machines – Chrome Finish – Left Handed	..\$82.99
<b>PWAT-6R2</b>	6 (In-Line) Auto-Trim Tuning Machines – Black Finish	..\$87.99
<b>PWAT-6L2</b>	6 (In-Line) Auto-Trim Tuning Machines – Black Finish – Left Handed	..\$87.99
<b>PWAT-6R3</b>	6 (In-Line) Auto-Trim Tuning Machines – Gold Finish	..\$93.99
<b>PWAT-6L3</b>	6 (In-Line) Auto-Trim Tuning Machines – Gold Finish – Left Handed	..\$93.99
<b>PWAT-331L6</b>	6 (3+3 version) Auto-Trim Tuning Machines – Chrome Finish	\$82.99
<b>PWAT-332L</b>	6 (3+3 version) Auto-Trim Tuning Machines – Black Finish	\$87.99
<b>PWAT-333L</b>	6 (3+3 version) Auto-Trim Tuning Machines – Gold Finish	\$93.99

**Solid Brass Guitar Strap End Pins**

Designed to fit perfectly with Planet Waves leather end and Planet Lock end guitar straps. Planet Waves guitar strap end pins are precision machined in the USA from solid brass stock.



	retail \$	black oxide	chrome	brass
<b>End Pins (2)</b>	\$1.75	<b>PWEP102</b>	<b>PWEP202</b>	<b>PWEP302</b>
<b>End Pins 20 Pack</b>	\$15.00	<b>PWEP122</b>	<b>PWEP222</b>	<b>PWEP322</b>
<b>End Pins 20 pack-Assorted</b>		<b>PWEP120</b>		\$15.00

**Ebony bridge/end pins**

Planet Waves ebony bridge and end pins are made from high-quality ebony, which lasts longer than ordinary plastic bridge pins.



Item	Description	..retail \$
<b>PWES1</b>	12 Ebony end pins	..\$27.50
<b>PWES2</b>	12 Ebony end pins w/Abalone Inlay	..\$45.00
<b>PWES3</b>	12 Ebony end pins w/Pearl Inlay	..\$45.00
<b>PWES4</b>	12 Ebony end pins w/ brass head	..\$45.00
<b>PWES5</b>	12 Ebony end pins w/Turquoise	..\$50.00
<b>PWBS1</b>	100 Ebony bridge pins	..\$115.00
<b>PWBS2</b>	100 Ebony bridge pins w/Abalone Inlay	..\$250.00
<b>PWBS3</b>	100 Ebony bridge pins w/Pearl Inlay	..\$250.00
<b>PWBS4</b>	100 Ebony bridge pins w/ brass head	..\$250.00
<b>PWBS5</b>	100 Ebony bridge pins w/Turquoise	..\$300.00
<b>PWPS1</b>	7 Ebony bridge/1 ebony end pin	..\$12.50
<b>PWPS2</b>	7 Ebony bridge/1 ebony end pin w/Abalone Inlay	..\$22.50

**Ebony bridge/end pins (continued)**

Item	Description	..retail \$
<b>PWPS3</b>	7 Ebony bridge/1 ebony end pin w/Pearl Inlay	..\$22.50
<b>PWPS4</b>	7 Ebony bridge/1 ebony end pin w/ brass head	..\$22.50
<b>PWPS5</b>	7 Ebony bridge/1 ebony end pin w/Turquoise	..\$25.00

**Boxwood bridge/end pins**

Planet Waves boxwood bridge and end pins are made from high-quality boxwood, which lasts longer than ordinary plastic bridge pins.

<b>PWES6</b>	12 Boxwood end pins	..\$32.50
<b>PWES7</b>	12 Boxwood end pins w/Black Pearl Inlay	..\$50.00
<b>PWES8</b>	12 Boxwood end pins w/Turquoise Inlay	..\$55.00
<b>PWBS6</b>	100 Boxwood bridge pins	..\$125.00
<b>PWBS7</b>	100 Boxwood bridge pins w/Black Pearl Inlay	..\$350.00
<b>PWBS8</b>	100 Boxwood bridge pins w/Turquoise Inlay	..\$400.00
<b>PWPS6</b>	7 Boxwood bridge/1 boxwood end pin	..\$12.50
<b>PWPS7</b>	7 Boxwood bridge/1 boxwood end pin w/Black Pearl Inlay	\$30.00
<b>PWPS8</b>	7 Boxwood bridge/1 boxwood end pin w/Turquoise Inlay	\$35.00

**Injection Molded bridge/end pins**

Planet Waves Injection Molded Bridge and end pins are precision molded from high-quality ABS plastic and offer extra strength and durability.

<b>PWES9</b>	12 Plastic end pins-black	..\$5.00
<b>PWES10</b>	12 Plastic end pins-black w/ ivory dot	..\$6.00
<b>PWES11</b>	12 Plastic end pins-ivory	..\$5.00
<b>PWES12</b>	12 Plastic end pins-ivory w/ black dot	..\$6.00
<b>PWBS9</b>	100 Plastic bridge pins-black	..\$15.00
<b>PWBS10</b>	100 Plastic bridge pins-black w/ ivory dot	..\$25.00
<b>PWBS11</b>	100 Plastic bridge pins-ivory	..\$15.00
<b>PWBS12</b>	100 Plastic bridge pins-ivory w/ black dot	..\$25.00
<b>PWPS9</b>	7 Plastic bridge/1 plastic end pin-black	..\$2.25
<b>PWPS10</b>	7 Plastic bridge/1 plastic end pin-black w/ ivory dot	..\$3.00
<b>PWPS11</b>	7 Plastic bridge/1 plastic end pin-ivory	..\$2.25
<b>PWPS12</b>	7 Plastic bridge/1 plastic end pin-ivory w/ black dot	..\$3.00

**Assortments**

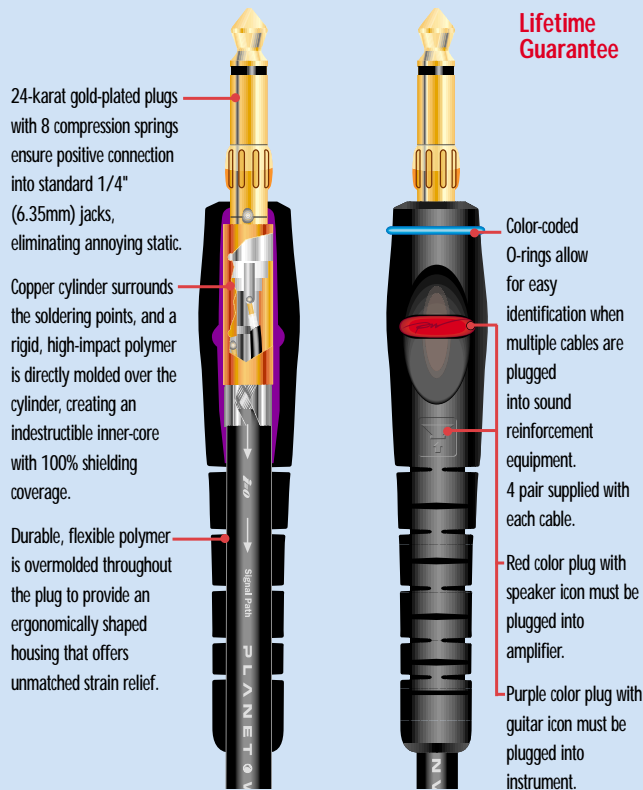
<b>PWPS2500</b>	250 pc Plastic Bridge/End Pin Display Kit	..\$60.00
	includes: 50 PWBS9, 50 PWBS10, 50 PWBS11, 50 PWBS12, 25 PWES9, 25 PWES11	
<b>PWPS2501</b>	250 pc Ebony/Boxwood Bridge/End Pin Display Kit	..\$765.00
	includes: 50 PWBS3, 50 PWBS5, 50 PWBS7, 50 PWBS8, 25 PWES1, 25 PWES6	
<b>PWPS2750</b>	275 pc Ebony Bridge/End Pin Display Kit	..\$625.00
	includes: 50 PWBS1, 50 PWBS2, 50 PWBS3, 50 PWBS4, 50 PWBS5, 25 PWES1	



# INSTRUMENT CABLES

## Instrument Cables

- Gold-plated plugs with patent-pending compression springs ensure positive connection into standard 1/4" jacks.
- Special double-insulated/double-shielded cable design provides the cleanest signal available while eliminating hum and triboelectric noise.
- Double-molded connectors provide extra protection with unmatched strain relief.
- Color-coded O-rings allow easy identification when multiple cables are plugged into sound reinforcement equipment.
- Packaging and point-of-purchase packaging materials will be sturdy, easily displayed, and feature detailed graphic and text descriptions of the product and what it is capable of doing.



## 1/4" to 1/4" Mono Instrument Cables

PW-G-01	1' long 1/4" Mono Guitar/Instrument Cable	\$19.99
PW-G-02	2' long 1/4" Mono Guitar/Instrument Cable	\$21.99
PW-G-05	5' long 1/4" Mono Guitar/Instrument Cable	\$24.99
PW-G-10	10' long 1/4" Mono Guitar/Instrument Cable	\$27.99
PW-G-15	15' long 1/4" Mono Guitar/Instrument Cable	\$29.99
PW-G-20	20' long 1/4" Mono Guitar/Instrument Cable	\$32.99
PW-G-30	30' long 1/4" Mono Guitar/Instrument Cable	\$39.99

## 1/4" to 1/4" Balanced Instrument Cables

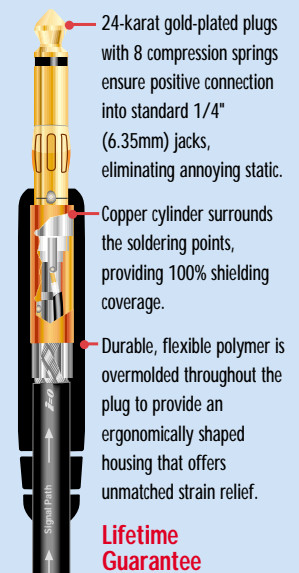
PW-GS-01	1' long 1/4" Balanced Audio Cable	\$21.99
PW-GS-05	5' long 1/4" Balanced Audio Cable	\$25.99
PW-GS-10	10' long 1/4" Balanced Audio Cable	\$28.99
PW-GS-25	25' long 1/4" Balanced Audio Cable	\$36.99

## Right-Angle Instrument Cable

PW-GRA-10	10' mono Right-Angle Instrument Cable	\$29.99
PW-GRA-20	20' mono Right-Angle Instrument Cable	\$34.99

## New! PATCH CABLE With Patent-Pending Compression Spring Plugs

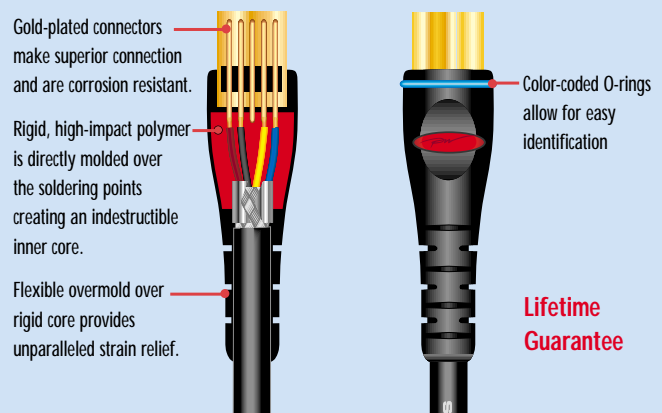
- Premium-quality patch cable with positive contact connectors
- Gold-plated plugs with patent-pending compression springs ensure positive connection into standard 1/4" (6.35mm) jacks
- Special double-insulated/double-shielded cable design provides cleanest signal available while eliminating hum and triboelectric noise
- Overmolded connectors with internal copper shield tube provide extra protection, unmatched strain relief, and full shield coverage.
- Multiple color-coded O-Rings allow easy identification when multiple cables are plugged into sound reinforcement equipment.



PW-P-01	1' mono In-Line Patch Cables (package of two)	\$32.99
PW-P-02	2' mono In-Line Patch Cables (package of two)	\$34.99
PW-PS-01	1' stereo In-Line Patch Cables (package of two)	\$33.99
PW-PS-02	2' stereo In-Line Patch Cables (package of two)	\$35.99
PW-PRA-205	6" mono Right-Angle Patch Cables (package of two)	\$32.99
PW-PRA-505	6" mono Right-Angle Patch Cables (package of five)	\$79.99

## New! MIDI CABLE

- Gold-plated connectors and double-molded plugs.
- Premium-quality MIDI cable with overmolded strain relief.
- Overmolded connectors trap the cable's soldering point, providing extra protection with unmatched strain relief.
- Premium-quality, double-shielded cable insures error-free data transmission.
- Color-coded O-rings allow for easy identification in multiple cable systems.



PW-MD-02	2' MIDI Cable	\$16.99
PW-MD-05	5' MIDI Cable	\$17.99
PW-MD-10	10' MIDI Cable	\$19.99
PW-MD-20	20' MIDI Cable	\$24.99

# INSTRUMENT CABLES

# GUITAR ELECTRONICS

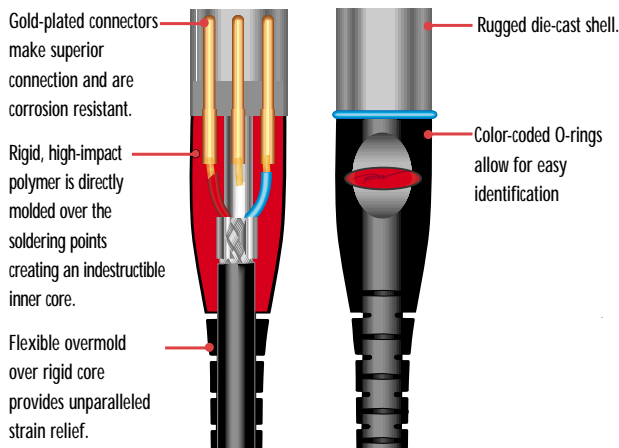
## New! MICROPHONE CABLE Double-Shielded Cable With Gold-Plated Connectors

Premium-Quality Microphone Cable with overmolded strain relief

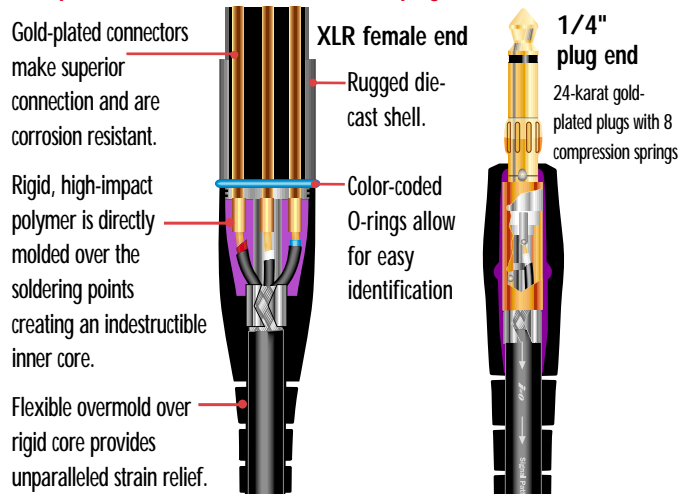
- 24-Karat gold-plated plugs ensure premium sound quality and corrosion resistance.

- Special Double-insulated/Double-shielded cable provides cleanest signal available while eliminating hum and triboelectric noise.
- Rugged die-cast connector housing.
- Overmolded polymer encapsulates soldering points, providing extra protection with unmatched strain relief.
- Color-coded O-rings allow easy identification when multiple cables are plugged into sound reinforcement equipment.
- Limited lifetime warranty.

### Microphone Cable – XLR Male to XLR Female



### Microphone Cable – XLR female to 1/4" plug



- PW-M-03 3' Microphone Cable – XLR male to XLR female . . . . \$24.99
- PW-M-05 5' Microphone Cable – XLR male to XLR female . . . . \$26.99
- PW-M-10 10' Microphone Cable – XLR male to XLR female . . . \$29.99
- PW-M-25 25' Microphone Cable – XLR male to XLR female . . . \$38.99
- PW-M-50 50' Microphone Cable – XLR male to XLR female . . . \$54.99
- PW-GM-10 10' Microphone Cable – XLR female to 1/4" plug . . . \$29.99
- PW-GM-25 25' Microphone Cable – XLR female to 1/4" plug . . . \$38.99

## New! Chordmaster



Planet Waves' Chordmaster is a hand-held chord dictionary that holds 4500 guitar chords in its memory. The quintessential chord dictionary, the Chordmaster has a small touch screen LCD display from which the musician can select the root note (A through G#), and then select from almost every conceivable chord type in every position on the guitar neck. A great pocket-size tool for every guitarist from beginners to advanced professionals.

Item # PWCM

Retail Price \$39.99

## GUITARPICKS

## Delrin® GUITAR PICKS

Planet waves Delrin® guitar picks are precision die cut and tumbled from Delrin® material. The picks have a unique matte finish for excellent grip and offer maximum memory with minimal wear.

## thickness/color

super light/red
light/orange
light-medium/yellow
medium/green
medium-heavy/blue
heavy/purple



#351 (standard)



#346 (wide)

Delrin® #351 - 100 pack. . . . . \$24.25  
 Delrin® #351 - 25 pack. . . . . \$7.50  
 PW1DPA1250 Delrin® #351 Pack . . . . . \$60.50  
 Delrin® #346 (wide) - 100 pack. . . . . \$40.00  
 Delrin® #346 (wide) - 25 pack . . . . . \$12.00  
 PW2DPA1 250 Delrin® Pack #346 (wide)\$100.00

## #351 (standard)

Add quantity to complete item number.  
 (ie. PW1DP01825)

Super light gauge .018" (.46mm) Red . . . PW1DP018\_\_  
 Light gauge .024" (.61mm) Orange . . . . PW1DP024\_\_  
 Light-medium gauge .027" (.69mm) Yellow PW1DP027\_\_  
 Medium gauge .033" (.84mm) Green. . . . PW1DP033\_\_  
 Medium heavy gauge .039" (.99mm) Blue PW1DP039\_\_  
 Heavy gauge .043" (1.09mm) Purple. . . . PW1DP043\_\_

## 346 (Wide)

Super light gauge .018" (.46mm) Red . . . PW2DP018\_\_  
 Light gauge .024" (.61mm) Orange . . . . PW2DP024\_\_  
 Light-medium gauge .027" (.69mm) Yellow PW2DP027\_\_  
 Medium gauge .033" (.84mm) Green. . . . PW2DP033\_\_  
 Medium heavy gauge .039" (.99mm) Blue. PW2DP039\_\_  
 Heavy gauge .043" (1.09mm) Purple. . . . PW2DP043\_\_

Delrin® is a registered trademark of  
 E.I. DuPont de Nemours & Co. (Inc.)

Injection Molded  
Guitar Picks

Planet Waves Injection Molded Guitar Picks are precision molded with smooth edges and raised lettering for better grip. Made from custom blended materials, Planet Waves Injection Molded Guitar Picks offer quality and consistency that is unmatched. Available in 100 piece re-fill bags, as well as re-sealable 25 packs packaged in re-sealable bags with header cards. Color coded by gauge.

Add quantity to complete item numbers below.

(ie. PW1AP01825)

All injection molded packs of 100. . . . . \$17.50

All injection molded packs of 25 . . . . . \$6.00

PW1APA1 250 pc injection molded assortment \$50.00

Super Light gauge .018" (.46mm) - Red PW1AP018\_\_  
 Light gauge .024" (.61mm) - Orange. PW1AP024\_\_  
 Light medium gauge .030" (.76mm) - Yellow PW1AP030\_\_  
 Medium gauge .036" (.91mm) - Green. . . . PW1AP036\_\_  
 Medium heavy gauge .041" (1.04mm) - Blue PW1AP041\_\_  
 Heavy gauge .046" (1.17mm) - Purple. . . . PW1AP046\_\_

Finger &  
Thumb Picks

Planet Waves classic celluloid finger & thumb picks are produced from the highest quality celluloid, and offer consistency and durability that is unmatched. Available in 50 pack only.

PWFP50 Medium Gauge Finger Picks. . . . . \$42.50

PWFP50L Medium Gauge Large Finger Picks. . . \$42.50

PWTP50 Medium Gauge Thumb Picks . . . . . \$42.50

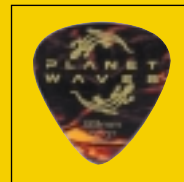
PWTP50L Medium Gauge Large Thumb Picks . . \$42.50



## Classic Celluloid Guitar Picks

Planet waves classic celluloid guitar picks are precision die cut and tumbled from the highest quality Celluloid. The picks have a smooth edge and offer maximum memory with minimal wear.

6 colors available, in 4 different gauges.



#351 (standard)



#346 (wide)

All celluloid #351 pick packs of 100 . . . . . \$28.00

All celluloid #351 pick packs of 25 . . . . . \$9.00

All celluloid #346 pick packs of 100 . . . . . \$42.50

All celluloid #346 pick packs of 25 . . . . . \$14.00



S - shell

W - white

BLK - black

MP - mother of pearl

GM - green marble (#351 only)\*

MC -multi-color

Add color and then quantity to complete item numbers below. (ie. PW1CWT25)

## #351 (Standard)

Light gauge .020" (.50mm) . . . . . PW1C\_\_T\_\_

Medium gauge .028" (.70mm) . . . . . PW1C\_\_M\_\_

Heavy gauge .039" (1.0mm) . . . . . PW1C\_\_H\_\_

Extra heavy gauge .043" (1.10mm) . PW1C\_\_X\_\_

## #346 (Wide)

Light gauge .020" (.50mm) . . . . . PW2C\_\_T\_\_

Medium gauge .028" (.70mm) . . . . . PW2C\_\_M\_\_

Heavy gauge .039" (1.0mm) . . . . . PW2C\_\_H\_\_

Extra heavy gauge .043" (1.10mm) . . . PW2C\_\_X\_\_

## Assortment

PW1CSA1 250 pc Celluloid pick assortment \$75.00  
 includes: 50 PW1CST, 50 PW1CSM,  
 50 PW1CSH, 50 PW1CSX, 25 PW2CSM,  
 25 PW2CSH

\* not available in extra heavy gauge

Custom Imprint  
 Picks available  
 upon request.\*\*

\*\*call for pricing



## Zyex®

D'Addario Zyex® strings are the most recent addition to the D'Addario bowed instrument string line, and they have been met with unprecedented praise and unanimous accolades from performers and makers around the world. Zyex® strings consist of a new composite fiber that is actually the closest man-made equivalent to gut, with better recovery, less tension loss, and a much higher resistance to climatic changes.

The core material of these strings is a product of aerospace technology, designed for the most extreme conditions of space—and this totally new molecular structure is perfect for use in musical instrument strings. It is not temperamental, like the more expensive gut, yet equals or outperforms gut in nearly every area of play. D'Addario Zyex® strings have as much as 1/8 less tension loss when compared to gut or perlon/nylon strings. And unlike gut, Zyex's playing characteristics are unaffected by exposure to moisture, sunshine, or temperature changes.

### Violin Strings

<b>DZ311</b>	E-tinned high carbon steel . . . . .	\$4.50
<b>DZ312</b>	A-aluminum wound . . . . .	\$14.50
<b>DZ313A</b>	D-aluminum wound . . . . .	\$18.00
<b>DZ313S</b>	D-silver wound . . . . .	\$22.30
<b>DZ314</b>	G-silver wound . . . . .	\$22.95
<b>DZ310A</b>	Set coiled-(aluminum D) . . . . .	\$59.95
<b>DZ310S</b>	Set coiled-(silver D) . . . . .	\$64.25

Available in 1/4 size only; light, medium, & heavy tensions.

### Viola Strings

<b>DZ411</b>	A-aluminum wound . . . . .	\$15.50
<b>DZ412A</b>	D-aluminum wound . . . . .	\$16.75
<b>DZ413</b>	G-silver wound . . . . .	\$21.25
<b>DZ414</b>	C-tungsten/silver wound . . . . .	\$23.50
<b>DZ410</b>	Set coiled . . . . .	\$77.00

Available in long scale (16" and over) only; light, medium, & heavy tensions.

Zyex® is a registered trademark of Zyex, Ltd.

US Patent #5587541



## Prelude

Solid steel core Prelude strings deliver quick response, stable intonation and a strong even-colored tone. The consistently smooth aluminum and pure nickel alloy outer windings are carefully tempered, computer wound, then highly polished.

### Violin Strings

<b>J811</b>	E*-tinned high carbon steel . . . . .	\$3.50
<b>J812</b>	A-aluminum wound . . . . .	\$7.25
<b>J813</b>	D-nickel wound . . . . .	\$7.55
<b>J814</b>	G-nickel wound . . . . .	\$7.70
<b>J810</b>	Set coiled . . . . .	\$26.00

Available in 1/4, 3/4, 1/2, 1/4, 1/8, (fits 1/16), & 1/32.

Fractional sizes available only in medium tension.

4/4 size sets available in light, medium, & heavy tensions. Specify when ordering.

### Viola Strings

<b>J911</b>	A-aluminum wound . . . . .	\$9.75
<b>J912</b>	D-aluminum wound . . . . .	\$9.50
<b>J913</b>	G-nickel wound . . . . .	\$11.50
<b>J914</b>	C-nickel wound . . . . .	\$12.50
<b>J910</b>	Set coiled . . . . .	\$43.25

Available in four body lengths; 12" (extra short), under 15" (short), 15-16" (medium), and 16" and over (long).

Available in medium tension only.

### Cello Strings

<b>J1011A</b>	A-aluminum wound . . . . .	\$21.25
<b>J1011</b>	A-nickel wound . . . . .	\$20.50
<b>J1012</b>	D-nickel wound . . . . .	\$21.25
<b>J1013</b>	G-nickel wound . . . . .	\$23.75
<b>J1014</b>	C-nickel wound . . . . .	\$26.00
<b>J1010</b>	Set coiled (nickel A) . . . . .	\$91.50

Available in 1/4, 3/4, 1/2, 1/4, and 1/8 scale lengths.

Fractional sizes available in medium tension only.

1/4 size sets available in light, medium, & heavy tensions. Specify when ordering.

Aluminum A sold as single only; available in 1/4 size only.



## Pro•Arté

Perlon core Pro•Arté strings are for the serious musician looking for the sound and feel of gut and the consistency of a synthetic core. These strings have a clear, soft, rich tone that enhances the natural modes of the instrument.

### Violin Strings

<b>J5601</b>	E*-tinned high carbon steel . . . . .	\$4.50
<b>J5601W</b>	E*-aluminum wound . . . . .	\$9.00
<b>J5602</b>	A-aluminum wound . . . . .	\$12.00
<b>J5603</b>	D-aluminum wound . . . . .	\$13.00
<b>J5603S</b>	D-silver wound . . . . .	\$14.50
<b>J5604</b>	G-silver wound . . . . .	\$15.25
<b>J56</b>	Set coiled (aluminum D) . . . . .	\$44.75
<b>J56W</b>	Set coiled (aluminum E) . . . . .	\$49.25
<b>J56S</b>	Set coiled (silver D) . . . . .	\$46.25

Available in 1/4, 3/4, 1/2, 1/4, 1/8, (fits 1/16), & 1/32.

Fractional sizes available in medium tension only.

1/4 size sets available in light, medium, & heavy tensions. Specify when ordering.

### Viola strings

<b>J5801</b>	A-aluminum wound . . . . .	\$13.50
<b>J5802</b>	D-aluminum wound . . . . .	\$13.85
<b>J5802S</b>	D-silver wound . . . . .	\$15.35
<b>J5803</b>	G-silver wound . . . . .	\$15.65
<b>J5804</b>	C-silver wound . . . . .	\$20.00
<b>J5804T</b>	C-silver/tungsten wound . . . . .	\$22.00
<b>J58</b>	Set coiled (aluminum D) . . . . .	\$63.00

Available in three body lengths; under 15" (short), 15-16" (medium), and 16" and over (long).

Long scale available in light, medium, & heavy tensions.

Medium tension only for short and medium body lengths. Specify when ordering.

Silver D and Tungsten C sold as singles only (Available only for 16" and over).

### Cello Strings

<b>J5901</b>	A-aluminum wound . . . . .	\$24.75
<b>J5902</b>	D-silver wound . . . . .	\$28.35
<b>J5903</b>	G-silver wound . . . . .	\$35.50
<b>J5903T</b>	G-tungsten/silver wound . . . . .	\$46.35
<b>J5904</b>	C-tungsten/silver wound . . . . .	\$56.15
<b>J59</b>	Set coiled (silver G) . . . . .	\$144.75

Available in 1/4, 3/4, 1/2, 1/4, and 1/8 scale lengths.

Fractional sizes available in medium tension only.

Tungsten Silver G sold as 1/4 single string only.

1/4 size sets available in light, medium, & heavy tensions. Specify when ordering.



## Golden Spiral Solo

The finest gut is chosen to make Kaplan Golden Spiral Solo strings. Recommended for solo or ensemble playing for the professional who still demands the great sound and feel of gut. Sold only as single strings.



### Violin Strings E-tinned high carbon steel

K420B-1	light tension, ball end	\$4.50
K420B-3	medium tension, ball end	\$4.50
K420B-5	heavy tension, ball end	\$4.50
K420L-1	light tension, loop end	\$4.50
K420L-3	medium tension, loop end	\$4.50
K420L-5	heavy tension, loop end	\$4.50

### Violin String E-aluminum wound on steel core

K301W	medium tension, loop end	\$9.00
-------	--------------------------	--------

### Violin Strings A-aluminum wound on gut core

K424-1	13, light tension	\$17.50
K424-2	13 1/2, med.-light tension	\$17.50
K424-3	13 1/2, medium tension	\$17.50
K424-4	13 3/4, med.-heavy tension	\$17.50
K424-5	14, heavy tension	\$17.50

### Violin Strings D-aluminum wound on gut core

K425-1	16 1/2, light tension	\$19.00
K425-2	16 3/4, med.-light tension	\$19.00
K425-3	17, medium tension	\$19.00
K425-4	17 1/4, med.-heavy tension	\$19.00
K425-5	17 1/2, heavy tension	\$19.00

### Violin Strings D-silver wound

K440-1	13, light tension	\$21.50
K440-2	13 1/4, med.-light tension	\$21.50
K440-3	13 1/2, medium tension	\$21.50
K440-4	13 3/4, med.-heavy tension	\$21.50
K440-5	14, heavy tension	\$21.50

### Violin Strings G-silver wound

K450-1	15 1/2, light tension	\$22.50
K450-2	15 3/4, med.-light tension	\$22.50
K450-3	16, medium tension	\$22.50
K450-4	16 1/4, med.-heavy tension	\$22.50
K450-5	16 1/2, heavy tension	\$22.50

### Viola Strings A-aluminum wound on gut core

K423-L1	12, light tension, long scale	\$23.75
K423-L3	12 1/2, med. tension, long scale	\$23.75
K423-L5	13, heavy tension, long scale	\$23.75
K423-M	13, med. tension, med. scale	\$23.75

### Viola Strings D-aluminum wound on gut core

K426-L1	15 1/2, light tension, long scale	\$26.50
K426-L3	16, med. tension, long scale	\$26.50
K426-L5	16 1/2, hvy. tension, long scale	\$26.50
K426-M	16 1/2, med. tension, med. scale	\$26.50

### Viola Strings D-silver wound on gut core

K441-L1	11 1/2, light tension, long scale	\$31.00
K441-L3	12, med. tension, long scale	\$31.00
K441-L5	12 1/2, heavy tension, long scale	\$31.00
K441-M	12 1/2, med. tension, med. scale	\$31.00

### Viola Strings G-silver wound on gut core

K451-L1	14 1/2, light tension, long scale	\$34.75
K451-L3	15, med. tension, long scale	\$34.75
K451-L5	15 1/2, heavy tension, long scale	\$34.75
K451-M	15 1/2, med. tension, med. scale	\$34.75

### Viola Strings C-silver wound on gut core

K452-L1	17 1/4, light tension, long scale	\$42.75
K452-L3	17 3/4, med. tension, long scale	\$42.75
K452-L5	18 1/2, heavy tension, long scale	\$42.75
K452-M	18 1/2, med. tension, med. scale	\$42.75

## Golden Spiral

These strings are manufactured using the same techniques as our Golden Spiral Solo line. They are sold as single strings only and are not gauge selected.



### Violin Strings

K400L	E-light tension, loop end	\$4.25
K400M	E-medium tension, loop end	\$4.25
K400H	E-heavy tension, loop end	\$4.25
K401	A-plain gut	\$11.00
K434	A-aluminum wound	\$15.50
K435	D-aluminum wound	\$16.50
K430	D-silver wound	\$18.25
K460	G-silver wound	\$20.75

### Bass Strings

#### G-monofilament nylon wound on gut core

K485L	light	\$99.00
K485M	medium	\$99.00
K485H	heavy	\$99.00

### Bass Strings

#### D-monofilament nylon wound on gut core

K486L	light	\$110.00
K486M	medium	\$110.00
K486H	heavy	\$110.00

## Bulk String Sets

Bulk string sets are available for violin, viola, and cello in our Prelude, Pro•Arté, and Helicore string lines.

Call for pricing



## Rosin

### Kaplan Artcraft Rosin

Premium quality Artcraft rosin is manufactured using the original recipe handed down from Ladislav Kaplan.

Available in light and dark, it is packaged in a reusable soft flannel pouch.



Each display holds 12 individual rosin.

KACR6	light	\$8.95
KACR7	dark	\$8.95

### D'Addario Natural Rosin

All natural ingredients combined in a very special process makes it perfect for either horsehair or synthetic bows. Handsome packaging utilizes a tray and sleeve design.



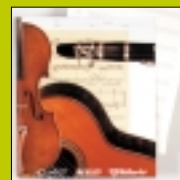
Each display holds 12 individual rosin.

VR200	light	\$4.15
VR300	dark	\$4.15

## Music Folders

An excellent way to help promote your store and help students keep their sheet music orderly and neat.

Colorful design printed on 12 point, coated one-sided paper offers sturdy protection for valuable sheet music. You can get these attractive folders with or without your store name printed on a label affixed to the back.



DMF1\*

DMF2\*

\*call your sales representative for details on pricing



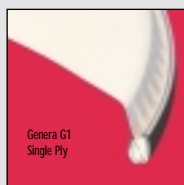
*"I am thoroughly enjoying the fine quality of D'Addario Pro•Arté violin strings. They are true in pitch, mellow in quality, and long lasting. Truly a perfect string for my instrument."*

**-Prof. Oscar Ravina**  
Member, NY Philharmonic

## Snare & Tom-Tom

### Genera G1

A drumming tradition, the unadorned, coated white makes the leap from vintage to modern. The Genera-weight film ensures that the G1 is both durable and sensitive. Just breathe on the G1 and the drum responds! Wide-open, it is your artist's palette, yielding a rainbow of timbres - depending on where and how you touch it.



#### Coated

<b>B06G1</b>	6" Batter . . . .	\$17.00
<b>B08G1</b>	8" Batter . . . .	\$17.50
<b>B10G1</b>	10" Batter . . . .	\$18.00
<b>B11G1</b>	11" Batter . . . .	\$19.50
<b>B12G1</b>	12" Batter . . . .	\$19.50
<b>B13G1</b>	13" Batter . . . .	\$21.00
<b>B14G1</b>	14" Batter . . . .	\$22.50
<b>B15G1</b>	15" Batter . . . .	\$24.00
<b>B16G1</b>	16" Batter . . . .	\$25.50
<b>B18G1</b>	18" Batter . . . .	\$33.00
<b>B20G1</b>	20" Batter . . . .	\$34.50

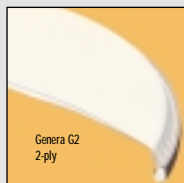
#### Clear

<b>TT06G1</b>	6" Batter . . . .	\$17.00
<b>TT08G1</b>	8" Batter . . . .	\$17.50
<b>TT10G1</b>	10" Batter . . . .	\$18.00
<b>TT11G1</b>	11" Batter . . . .	\$19.50
<b>TT12G1</b>	12" Batter . . . .	\$19.50
<b>TT13G1</b>	13" Batter . . . .	\$21.00
<b>TT14G1</b>	14" Batter . . . .	\$22.50
<b>TT15G1</b>	15" Batter . . . .	\$24.00
<b>TT16G1</b>	16" Batter . . . .	\$25.50
<b>TT18G1</b>	18" Batter . . . .	\$33.00
<b>TT20G1</b>	20" Batter . . . .	\$34.50

## Snare & Tom-Tom

### Genera G2

Genera G2 clear and coated drumheads are the most consistent sounding 2-ply heads available. Evans has developed state-of-the-art manufacturing techniques to form all of our heads without disturbing the molecular structure of the film, ensuring that you'll get a live sounding head every single time. G2s have a powerful, fat, focused attack and full controlled sustain, and the G2 coated heads give you added articulation for high volume playing situations. You can use Genera G2s live or in the studio for rock, fusion, country, and big band or high-volume jazz playing. The G2 clear heads are also excellent on the timbales for Latin rock performance.



#### Coated

<b>B06G2</b>	6" Batter . . . .	\$17.00
<b>B08G2</b>	8" Batter . . . .	\$17.50
<b>B10G2</b>	10" Batter . . . .	\$18.00
<b>B11G2</b>	11" Batter . . . .	\$19.50
<b>B12G2</b>	12" Batter . . . .	\$19.50
<b>B13G2</b>	13" Batter . . . .	\$21.00
<b>B14G2</b>	14" Batter . . . .	\$22.50
<b>B15G2</b>	15" Batter . . . .	\$24.00
<b>B16G2</b>	16" Batter . . . .	\$25.50
<b>B18G2</b>	18" Batter . . . .	\$33.00
<b>B20G2</b>	20" Batter . . . .	\$34.50

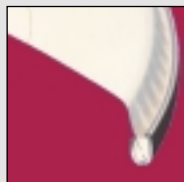
#### Clear

<b>TT06G2</b>	6" Batter . . . .	\$17.00
<b>TT08G2</b>	8" Batter . . . .	\$17.50
<b>TT10G2</b>	10" Batter . . . .	\$18.00
<b>TT11G2</b>	11" Batter . . . .	\$19.50
<b>TT12G2</b>	12" Batter . . . .	\$19.50
<b>TT13G2</b>	13" Batter . . . .	\$21.00
<b>TT14G2</b>	14" Batter . . . .	\$22.50
<b>TT15G2</b>	15" Batter . . . .	\$24.00
<b>TT16G2</b>	16" Batter . . . .	\$25.50
<b>TT18G2</b>	18" Batter . . . .	\$33.00
<b>TT20G2</b>	20" Batter . . . .	\$34.50

## Snare

### POWER CENTER®

We heard your prayers. You asked for the response of a single-ply head, but had concerns about trashing the middle. The Power Circle adds durability - and focus - where the stick falls most. Meanwhile, the overtones sing around the rim. Unique perforated vents open up the sound and make for a user-friendly feeling.



#### Evans Power Center®

<b>B13G1D</b>	13" Batter . . .	\$23.50
<b>B14G1D</b>	14" Batter . . .	\$24.50

#### Evans Power Center® Reverse Dot

<b>B13G1RD</b>	13" Batter . . .	\$23.50
<b>B14G1RD</b>	14" Batter . . .	\$24.50

## Snare

### GENERA

The best of both worlds, the GENERA is a single-ply head that has the fat spread of a double-ply head. A slender 2 mil overtone control ring on the underside "floats" with the head, affording a touch of damping. The rimshot remains clear.

**B12GEN** 12" Batter . . . . \$26.00

**B13GEN** 13" Batter . . . . \$27.00

**B14GEN** 14" Batter . . . . \$28.00



## Snare

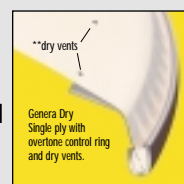
### GENERA DRY

A step dryer in a one-ply head. Evans tried-and-true vents eliminate stray harmonics - and permit the head to "give" a little under your stick. Tuned medium/loose and struck dead center, the head responds with a snare sizzle that's microphone friendly. Tighten it and the GENERA DRY opens-up with a crisp rimshot.

**B12DRY** 12" Batter . . . . \$26.00

**B13DRY** 13" Batter . . . . \$27.00

**B14DRY** 14" Batter . . . . \$28.00



## Snare

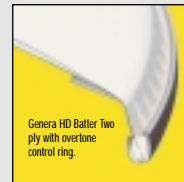
### GENERA HD

It yields an extremely full rimshot and balanced response from the center. Lay into this one with the assurance that it's not going to go anywhere! The muffling is just a tad and banishes only troublesome overtones. Tighten the GENERA HD; it will not choke. It barks live - plus, it speaks within an ideal frequency window for studio.

**B12HD** 12" Batter . . . . \$26.00

**B13HD** 13" Batter . . . . \$27.00

**B14HD** 14" Batter . . . . \$28.00



## Snare

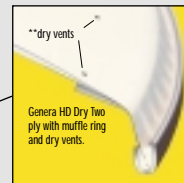
### GENERA HD DRY

A double-ply head with overtone control ring that is instantly both contemporary and retro. Tune it loose to evoke Abbey Road tube mikes or 1970s Memphis. Crank it up and it sparkles with an exquisite mixture of overtones. Great for studio, the GENERA HD DRY has the necessary live crack to wedge through overdriven guitars and keyboards. Those tiny dry vents and narrow overtone control ring go to work at any tuning. The stick feels plain good when you smack this one hard!

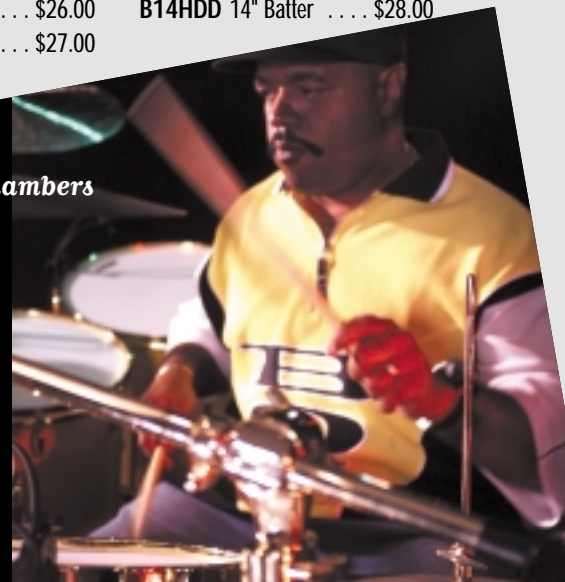
**B12HDD** 12" Batter . . . \$26.00

**B14HDD** 14" Batter . . . . \$28.00

**B13HDD** 13" Batter . . . \$27.00



**Dennis Chambers**





## Snare

### Rock AF

Rock AF heads are made with the same durable Aramid fiber as our marching snare heads, but are given a light coating and have *NO* overtone control ring. Able to withstand heavy playing, but still sensitive and responsive enough for light playing or ghost notes.; Sound: Crisp, articulate, extremely focused but expressive; Resonance: Dry; Application: Rock, fusion, high volume rim-shots

**ESS13KB** 13" Batter ... \$60.00

**ESS14KB** 14" Batter ... \$64.50

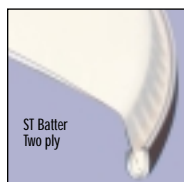


## Snare

### ST (Snare only)

The ST buries other two-ply heads in its category. Packing two layers of 7.5 mil film, we are talking serious protection! Ah, but the sound... the ST promotes a full-bandwidth rimshot. It has all the volume and ring you could ask for, yet responds to the flick of a fingernail. For butt-end or tip players!

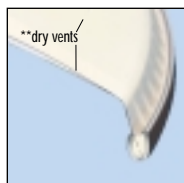
**B13ST** 13" Batter ... \$21.50    **B14ST** 14" Batter ... \$23.50



### ST DRY (Snare only)

The same two plies, but what a difference those vents make! The ST DRY has the volume and aggression of the ST, but with the higher harmonics brushed from the picture. It cuts through with rich tone. Ghost notes articulate beautifully, while the rimshot is lightly gated. Rock-hard, it holds its tone. Crack it fearlessly and the vents promote an organic sensation - almost "aged-in" like a vintage ride cymbal.

**B13STD** 13" Batter ... \$25.00    **B14STD** 14" Batter ... \$25.50



## Snare

### UNO 58 1000 DRY

A thin, single-ply head without the annoying overtones or that brittle feeling when you crank it up. The tiny vents, strategically placed around the circumference, filter out only the harshest overtones. You get lightning response with sticks or brushes, a velvety smooth rimshot, and a "softer" feeling - even at high tension.

**B14W10D** 14" Batter ... \$21.00



## Snare & Tom-Tom

### Uno 58 1000

Uno 58 1000 drumheads have a bright, round, traditional sound on tom-toms and snare. They are versatile all-purpose drumheads that can be used as either batter or resonant heads. These coated, single ply heads are perfect for jazz, fusion, pop, or country.

**B06W10** 6" Batter ... \$14.00

**B08W10** 8" Batter ... \$14.50

**B10W10** 10" Batter ... \$15.50

**B11W10** 11" Batter ... \$17.00

**B12W10** 12" Batter ... \$17.00

**B13W10** 13" Batter ... \$18.50

**B14W10** 14" Batter ... \$19.50

**B15W10** 15" Batter ... \$21.00

**B16W10** 16" Batter ... \$23.00

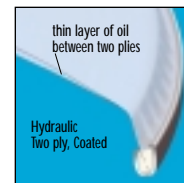
**B18W10** 18" Batter ... \$27.00

**B20W10** 20" Batter ... \$29.50

## Snare & Tom Tom

### HYDRAULIC

What is "funk?" Comprised of an outer 7 mil ply and an inner 6.5 mil ply sandwiching a layer of oil, hydraulics have the wet sound that defined the '70s - again in vogue! A durable head, the HYDRAULIC SNARE has a short sustain that emphasizes the fundamental tone of your drum. A blanket cure for troublesome snare drums and reflective rooms, this Evans veteran is back in the high life.



### Evans Hydraulic Glass

**TT06HG** 6" Batter ... \$18.50

**TT08HG** 8" Batter ... \$19.50

**TT10HG** 10" Batter ... \$20.00

**TT11HG** 11" Batter ... \$21.00

**TT12HG** 12" Batter ... \$21.00

**TT13HG** 13" Batter ... \$22.00

**TT14HG** 14" Batter ... \$24.00

**TT15HG** 15" Batter ... \$25.00

**TT16HG** 16" Batter ... \$28.00

**TT18HG** 18" Batter ... \$35.50

**TT20HG** 20" Batter ... \$38.50

### Evans Hydraulic Blue

**TT06HB** 6" Batter ... \$18.50

**TT08HB** 8" Batter ... \$19.50

**TT10HB** 10" Batter ... \$20.00

**TT11HB** 11" Batter ... \$21.00

**TT12HB** 12" Batter ... \$21.00

**TT13HB** 13" Batter ... \$22.00

**TT14HB** 14" Batter ... \$24.00

**TT15HB** 15" Batter ... \$25.00

**TT16HB** 16" Batter ... \$28.00

**TT18HB** 18" Batter ... \$35.50

**TT20HB** 20" Batter ... \$38.50

### Evans Hydraulic Black

**TT06HBG** 6" Batter ... \$23.50

**TT08HBG** 8" Batter ... \$25.00

**TT10HBG** 10" Batter ... \$26.50

**TT11HBG** 11" Batter ... \$27.50

**TT12HBG** 12" Batter ... \$27.50

**TT13HBG** 13" Batter ... \$29.00

**TT14HBG** 14" Batter ... \$30.00

**TT15HBG** 15" Batter ... \$32.00

**TT16HBG** 16" Batter ... \$34.00

**TT18HBG** 18" Batter ... \$45.00

**TT20HBG** 20" Batter ... \$49.50

### Evans Hydraulic Snare Ctd. Blue

**B14HB** 14" Batter ... \$26.00

### Evans Hydraulic Snare Ctd. Black

**B14HBG** 14" Batter ... \$33.00

## Resonant

### Genera Resonant

Genera Resonants have very bright overtones. When used with 1- or 2-ply clear or coated batter heads, they will provide a bright, open sustain.

**TT06GR** 6" Resonant ... \$14.00

**TT08GR** 8" Resonant ... \$14.50

**TT10GR** 10" Resonant ... \$15.50

**TT11GR** 11" Resonant ... \$17.00

**TT12GR** 12" Resonant ... \$17.00

**TT13GR** 13" Resonant ... \$18.50

**TT14GR** 14" Resonant ... \$19.50

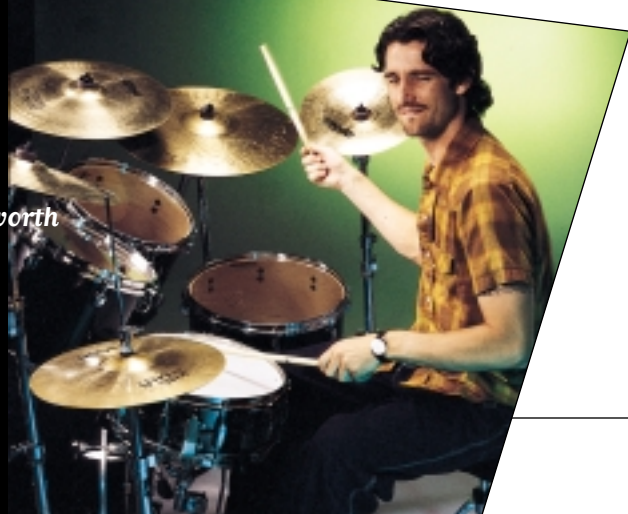
**TT15GR** 15" Resonant ... \$21.00

**TT16GR** 16" Resonant ... \$23.00

**TT18GR** 18" Resonant ... \$27.00

**TT20GR** 20" Resonant ... \$29.50

Dean  
Butterworth



## Resonant

### Resonant Glass and Black

Resonant Glass and Black heads are the thinnest resonant heads we make. When used with either a single or two-ply head, they will increase attack. Thickness: Glass: 6.5 mil; Black 7 mil

#### Evans Resonant Glass

TT06RGL	6" Resonant	\$14.00
TT08RGL	8" Resonant	\$14.50
TT10RGL	10" Resonant	\$15.50
TT11RGL	11" Resonant	\$17.00
TT12RGL	12" Resonant	\$17.00
TT13RGL	13" Resonant	\$18.50
TT14RGL	14" Resonant	\$19.50
TT15RGL	15" Resonant	\$21.00
TT16RGL	16" Resonant	\$23.00
TT18RGL	18" Resonant	\$27.00
TT20RGL	20" Resonant	\$29.50

#### Evans Resonant Black

TT06RBG	6" Resonant	\$18.50
TT08RBG	8" Resonant	\$19.00
TT10RBG	10" Resonant	\$19.50
TT11RBG	11" Resonant	\$21.00
TT12RBG	12" Resonant	\$21.00
TT13RBG	13" Resonant	\$22.00
TT14RBG	14" Resonant	\$23.00
TT15RBG	15" Resonant	\$25.00
TT16RBG	16" Resonant	\$27.00
TT18RBG	18" Resonant	\$32.00
TT20RBG	20" Resonant	\$37.00

### Snare Side 200

At 2 mils, 200 weight snare side drumheads are the thinnest heads we produce. This light-weight snare side head, combined with a single-ply batter head, will give you greater sensitivity for soft snare drum rolls and articulate sticking. These snare sides are also good for normal playing situations in which the music doesn't get too loud. Good for symphonic, jazz, rock, fusion, studio, and country music.

#### Evans Snare Side Hazy 200

S10H20	10" Snare Side	\$16.00
S12H20	12" Snare Side	\$17.00
S13H20	13" Snare Side	\$17.50
S14H20	14" Snare Side	\$18.00

### Snare Side 300

Evans 300 weight snare side heads are 3 mils thick and are our most versatile snare sides; they're great for all types of music. These snare sides can be combined with 1- or 2-ply batter heads and have a wide dynamic range that will focus the sound of the snare drum. Good for jazz, rock, fusion, studio, and country music.

#### Evans Snare Side Hazy 300

S10H30	10" Snare Side	\$16.00
S12H30	12" Snare Side	\$17.00
S13H30	13" Snare Side	\$17.50
S14H30	14" Snare Side	\$18.00
S15H30	15" Snare Side	\$18.50

### Snare Side 500

Five mil thick 500 weight snare side heads are for louder playing situations and should be combined with 2-ply heads. These snare sides will give you more attack, less ring, and focused backbeats, as well as maximum durability. Good for loud rock, fusion, country, studio, alternative rock, metal music, and marching snare.

#### Evans Snare Side Glass 500

S13R50	13" Snare Side	\$17.50
S14R50	14" Snare Side	\$18.00

## Genera G1 & G2 Bass Heads

Genera G1 drumheads have a bright, traditional sound. They are versatile all-purpose heads that can be employed as either batter or resonant heads. These coated, single ply bass drumheads are perfect for jazz.

### Genera G1 Bass Coated or Clear

CONFIGURATION: Coated white/Clear

THICKNESS: Single ply: 10 mil;

SOUND: Solid attack, good spread; RESONANCE: More mid-range overtones, warm sustain

APPLICATION: General use, jazz, fusion, live or studio

### Genera G1 Clear Bass Heads

BD18G1	18" G1 Clear	\$40.00
BD20G1	20" G1 Clear	\$42.00
BD22G1	22" G1 Clear	\$44.00
BD24G1	24" G1 Clear	\$47.00
BD26G1	26" G1 Clear	\$53.00
BD28G1	28" G1 Clear	\$58.00

### Genera G1 Coated White Bass Heads

BD18G1CW	18" G1 Coated White	\$40.00
BD20G1CW	20" G1 Coated White	\$42.00
BD22G1CW	22" G1 Coated White	\$44.00
BD24G1CW	24" G1 Coated White	\$47.00
BD26G1CW	26" G1 Coated White	\$53.00
BD28G1CW	28" G1 Coated White	\$58.00

### Genera G2 Clear Bass Heads

CONFIGURATION: Clear

THICKNESS: 2-ply (outer ply: 7 mil; inner ply: 7 mil)

SOUND: Fat, open attack; RESONANCE: Full controlled sustain

APPLICATION: General playing, louder playing, live or studio, jazz, fusion

BD20G2	20" Genera G2 Clear	\$42.50
BD22G2	22" Genera G2 Clear	\$47.50

## Hydraulic

Exclusive to the Evans line, Hydraulic heads have a layer of oil between the two plies to give you the fat, wet sound that was so popular in the '70s. The oil acts as a natural muffler to decrease sustain and increase attack without affecting the feel of the head, as internal and external mufflers often do. Hydraulics have a solid attack and a controlled, quick sustain, and are best suited for rock. They are available in glass, black, and blue, and can be used both live and in studio.



### Hydraulic Bass Glass, Blue, or Black

CONFIGURATION: Oil filled, clear/ blue/ black

THICKNESS: 2-ply (outer ply: glass: 6.5 mil, blue & black: 7 mil; inner ply: 6.5 mil)

SOUND: Fat and wet; RESONANCE: Dry, short sustain

APPLICATION: General use, rock, fusion, live or studio.

### Hydraulic Blue Bass Heads

BD20HB	20" Hydraulic Blue	\$45.50
BD22HB	22" Hydraulic Blue	\$51.00
BD24HB	24" Hydraulic Blue	\$56.50

### Hydraulic Glass Bass Heads

BD20HG	20" Hydraulic Glass	\$45.50
BD22HG	22" Hydraulic Glass	\$51.00
BD24HG	24" Hydraulic Glass	\$56.50

### Hydraulic Black Bass Heads

BD20HBG	20" Hydraulic Black	\$61.50
BD22HBG	22" Hydraulic Black	\$66.50
BD24HBG	24" Hydraulic Black	\$73.50

## Externally Mounted Adjustable Damping (EMAD) Bass Drumhead



The EMAD comes with two dampening rings, each of which affects the head's sound and pedal response. This external system not only maximizes natural attack characteristics and offers tremendous dynamic range (even at low dynamic levels where other damping systems fall short), it also allows quick, easy adjustments – without having to remove the head from the drum. This unique feature is extremely valuable, especially during recording sessions.

### New! EMAD Bass Batter Head

CONFIGURATION: Clear, plastic damping sleeve on external side holds ½" thick foam damping rings (included – choice of ½" or 1½" wide)  
THICKNESS: Single Ply (10 mil); SOUND: Aggressive attack, moderately or extremely focused (player's choice); RESONANCE: Warm, tremendous low end; APPLICATION: General use, all applications

<b>BD18EMAD</b> 18" EMAD Clear Batter	.....\$60.00
<b>BD20EMAD</b> 20" EMAD Clear Batter	.....\$63.00
<b>BD22EMAD</b> 22" EMAD Clear Batter	.....\$65.00
<b>BD24EMAD</b> 24" EMAD Clear Batter	.....\$70.00



From left: EQ1, EQ2, & EQ3 Resonant Heads

## EQ Bass Drum System

EQ heads have an internal overtone control ring on the inside of the batter and resonant heads that eliminate unwanted overtones, increase attack, and control the amount of sustain from your bass. The batter heads feature a removable EQ damping ring that is held in place by the overtone control ring. If you need a more open sound, you can remove the EQ ring without damaging the head. You can return to your original sound by putting the EQ ring back. The coated EQ batter and resonant heads will reduce some of the overtones and increase attack.

### EQ1 Clear Batter Head

CONFIGURATION: Clear, removable internal overtone control ring, removable EQ ring, dry vents

THICKNESS: Single ply (Outer ply: 10 mil; removable overtone control ring: 10 mil; EQ ring: 7 mil)

SOUND: Solid attack, good spread, full low end; RESONANCE: Controlled, focused  
APPLICATION: General use, jazz, rock, fusion, live or studio

### EQ1 Clear Bass Batter Heads

<b>BD18GB1</b> 18" EQ1 Clear	..\$49.00	<b>BD24GB1</b> 24" EQ1 Clear	..\$63.00
<b>BD20GB1</b> 20" EQ1 Clear	..\$52.00	<b>BD26GB1</b> 26" EQ1 Clear	..\$69.00
<b>BD22GB1</b> 22" EQ1 Clear	..\$57.00		

### EQ1 Coated Batter Heads

CONFIGURATION: Coated, internal overtone control ring, removable EQ ring, dry vents; THICKNESS: Single ply (Outer ply: 10 mil; removable overtone control ring: 10 mil; EQ ring: 7 mil)

SOUND: Solid attack, good spread, full low end; RESONANCE: Controlled, focused  
APPLICATION: General use, jazz, rock, fusion, live or studio

<b>BD18GB1C</b> 18" EQ1 Coated	..\$49.00	<b>BD24GB1C</b> 24" EQ1 Coated	..\$63.00
<b>BD20GB1C</b> 20" EQ1 Coated	..\$52.00	<b>BD26GB1C</b> 26" EQ1 Coated	..\$69.00
<b>BD22GB1C</b> 22" EQ1 Coated	..\$57.00		

### EQ2 Clear Bass Batter Heads

CONFIGURATION: Clear, internal overtone control ring, removable EQ ring, dry vents  
THICKNESS: 2-ply (Outer ply: 10 mil; inner ply: 6.5 mil; removable overtone control ring: 10 mil; EQ ring: 7 mil)

SOUND: Solid attack, aggressive, big sound, full low end;

RESONANCE: Focused sustain

APPLICATION: Aggressive music, hard hitters, live or studio

<b>BD18GB2</b> 18" EQ2 Clear	..\$59.00	<b>BD24GB2</b> 24" EQ2 Clear	..\$72.00
<b>BD20GB2</b> 20" EQ2 Clear	..\$63.00	<b>BD26GB2</b> 26" EQ2 Clear	..\$80.00
<b>BD22GB2</b> 22" EQ2 Clear	..\$65.00		

### EQ3 Clear Bass Batter Heads

CONFIGURATION: Clear, internal overtone control ring, removable EQ ring  
THICKNESS: 2-ply (Outer ply: 6.5 mil; inner ply: 6.5 mil; removable overtone control ring: 10 mil; EQ ring: 7 mil)

SOUND: Focused attack, big sound, full low end; RESONANCE: Controlled, focused sustain

APPLICATION: General use, rock, fusion, jazz, live or studio

<b>BD18GB3</b> 18" EQ3 Clear	..\$58.00	<b>BD24GB3</b> 24" EQ3 Clear	..\$70.50
<b>BD20GB3</b> 20" EQ3 Clear	..\$61.00	<b>BD26GB3</b> 26" EQ3 Clear	..\$78.00
<b>BD22GB3</b> 22" EQ3 Clear	..\$63.50		

### EQ3 Coated Bass Batter Heads

CONFIGURATION: Coated, internal overtone control ring, removable EQ ring  
THICKNESS: 2-ply (Outer ply: 6.5 mil; inner ply: 6.5 mil; overtone control ring: 10 mil; EQ ring: 7 mil)

SOUND: Focused defined attack, big sound, full low end; RESONANCE: Short, focused sustain; APPLICATION: General use, rock, fusion, jazz, live or studio

<b>BD18GB3C</b> 18" EQ3 Coated	..\$58.00	<b>BD24GB3C</b> 24" EQ3 Coated	..\$70.50
<b>BD20GB3C</b> 20" EQ3 Coated	..\$61.00	<b>BD26GB3C</b> 26" EQ3 Coated	..\$78.00
<b>BD22GB3C</b> 22" EQ3 Coated	..\$63.50		

### EQ4 Clear Bass Batter Heads

CONFIGURATION: Clear; THICKNESS: Single ply: 10 mil; internal overtone control ring: 10 mil; SOUND: Punchy attack, big low end

RESONANCE: Focused sustain

APPLICATION: General use, big band, rock, fusion, live or studio.

<b>BD18GB4</b> 18" EQ4 Clear	..\$43.00	<b>BD24GB4</b> 24" EQ4 Clear	..\$51.00
<b>BD20GB4</b> 20" EQ4 Clear	..\$45.00	<b>BD26GB4</b> 26" EQ4 Clear	..\$58.00
<b>BD22GB4</b> 22" EQ4 Clear	..\$47.50		





## EQ4 Coated Bass Batter Heads

CONFIGURATION: Coated

THICKNESS: Single ply: 10 mil; internal overtone control ring: 10 mil.

SOUND: Punchy attack, big low end; RESONANCE: Focused sustain

APPLICATION: General use, versatile head, rock, fusion, live or studio.

**BD18GB4C** 18" EQ4 Coated ... \$43.00 **BD24GB4C** 24" EQ4 Coated ... \$51.00

**BD20GB4C** 20" EQ4 Coated ... \$45.00 **BD26GB4C** 26" EQ4 Coated ... \$58.00

**BD22GB4C** 22" EQ4 Coated ... \$47.50

## EQ1 Resonant Black Heads

CONFIGURATION: Black, internal overtone control ring, dry vents

THICKNESS: Single ply: 7 mil; internal overtone control ring: 10 mil

SOUND: Warm, full overtones; RESONANCE: Controlled sustain

APPLICATION: General use, versatile head, live or studio

**BD18RA** 18" EQ1 Resonant Black ..... \$48.00

**BD20RA** 20" EQ1 Resonant Black ..... \$50.00

**BD22RA** 22" EQ1 Resonant Black ..... \$52.00

**BD24RA** 24" EQ1 Resonant Black ..... \$61.50

**BD26RA** 26" EQ1 Resonant Black ..... \$68.00

## EQ1 Resonant Coated Heads

CONFIGURATION: Coated, internal overtone control ring, dry vents

THICKNESS: Single ply: 6.5 mil; internal overtone control ring: 10 mil

SOUND: Focused attack, full overtones; RESONANCE: Controlled sustain

APPLICATION: General use, versatile head, live or studio

**BD18RAC** 18" EQ1 Resonant Coated ..... \$48.00

**BD20RAC** 20" EQ1 Resonant Coated ..... \$50.00

**BD22RAC** 22" EQ1 Resonant Coated ..... \$52.00

**BD24RAC** 24" EQ1 Resonant Coated ..... \$61.50

**BD26RAC** 26" EQ1 Resonant Coated ..... \$68.00

## EQ1 Resonant Coated White Heads

CONFIGURATION: Coated white, internal overtone control ring, dry vents

THICKNESS: Single ply: 6.5 mil; internal overtone control ring: 10 mil

SOUND: Focused attack, full overtones; RESONANCE: Controlled sustain

APPLICATION: General use, versatile head, live or studio

**BD18RACW** 18" EQ1 Resonant Coated White ..... \$48.00

**BD20RACW** 20" EQ1 Resonant Coated White ..... \$50.00

**BD22RACW** 22" EQ1 Resonant Coated White ..... \$52.00

**BD24RACW** 24" EQ1 Resonant Coated White ..... \$61.50

**BD26RACW** 26" EQ1 Resonant Coated White ..... \$68.00

## EQ2 Resonant Black Heads

CONFIGURATION: Black, internal overtone control ring, studio grill

THICKNESS: Single ply: 7 mil; internal overtone control ring: 10 mil

SOUND: Fat, warm, dry; Resonance: Warm, controlled sustain

APPLICATION: General use, live or studio

**BD18RS** 18" EQ2 Resonant Black \$51.00 **BD24RS** 24" EQ2 Resonant Black \$63.50

**BD20RS** 20" EQ2 Resonant Black \$53.00 **BD26RS** 26" EQ2 Resonant Black \$70.50

**BD22RS** 22" EQ2 Resonant Black \$55.00

## EQ3 Resonant Black Heads

CONFIGURATION: Black, internal overtone control ring, 5" offset hole

THICKNESS: Single ply: 7 mil; internal overtone control ring: 10 mil

SOUND: Controlled, short decay; RESONANCE: Less sustain

APPLICATION: General use, good for internal miking, live or studio

**BD18RB** 18" EQ3 Resonant Black \$51.00 **BD24RB** 24" EQ3 Resonant Black \$63.50

**BD20RB** 20" EQ3 Resonant Black \$53.00 **BD26RB** 26" EQ3 Resonant Black \$70.50

**BD22RB** 22" EQ3 Resonant Black \$55.00

## EQ3 Resonant Clear Heads

CONFIGURATION: Clear, internal overtone control ring, 5" offset hole

THICKNESS: Single ply: 6.5 mil; internal overtone control ring: 10 mil

SOUND: Controlled, short decay; RESONANCE: Less sustain

APPLICATION: General use, good for internal miking, live or studio

**BD18RG** 18" EQ3 Resonant Clear \$40.00 **BD24RG** 24" EQ3 Resonant Clear \$52.00

**BD20RG** 20" EQ3 Resonant Clear \$43.00 **BD26RG** 26" EQ3 Resonant Clear \$56.00

**BD22RG** 22" EQ3 Resonant Clear \$47.00

## EQ3 Resonant Coated Heads

CONFIGURATION: Coated, internal overtone control ring, 5" offset hole

THICKNESS: Single ply: 6.5 mil; internal overtone control ring: 10 mil

SOUND: Focused, controlled sound; RESONANCE: Short sustain

APPLICATION: General use, good for internal miking, live or studio

**BD18RGC** 18" EQ3 Resonant Coated ..... \$40.00

**BD20RGC** 20" EQ3 Resonant Coated ..... \$43.00

**BD22RGC** 22" EQ3 Resonant Coated ..... \$47.00

**BD24RGC** 24" EQ3 Resonant Coated ..... \$52.00

**BD26RGC** 26" EQ3 Resonant Coated ..... \$56.00

## EQ3 Resonant Coated White Heads

CONFIGURATION: Coated white, internal overtone control ring, 5" offset hole

THICKNESS: Single ply: 6.5 mil; internal overtone control ring: 10 mil

SOUND: Focused, controlled sound; RESONANCE: Short sustain

APPLICATION: General use, good for internal miking, live or studio

**BD18RGCW** 18" EQ3 Resonant Coated White ..... \$40.00

**BD20RGCW** 20" EQ3 Resonant Coated White ..... \$43.00

**BD22RGCW** 22" EQ3 Resonant Coated White ..... \$47.00

**BD24RGCW** 24" EQ3 Resonant Coated White ..... \$52.00

**BD26RGCW** 26" EQ3 Resonant Coated White ..... \$56.00

Alex Acuña



## Resonant

Resonant Black heads are the thinnest bass resonant heads we make. When used with either 1- or 2-ply heads they will increase sustain.

### Resonant Bass Black

CONFIGURATION: Black

THICKNESS: Single ply: Black: 7 mil

SOUND: More overtones, open sound; RESONANCE: Bright, good sustain

APPLICATION: General use, light playing, live or studio

### Resonant Black Bass Heads

**BD18RBG** 18" Resonant Black \$45.50 **BD24RBG** 24" Resonant Black \$54.50

**BD20RBG** 20" Resonant Black \$47.50 **BD26RBG** 26" Resonant Black \$59.00

**BD22RBG** 22" Resonant Black \$51.50 **BD28RBG** 28" Resonant Black \$65.00

### Mesh Retro Screen® Bass Resonant Heads

CONFIGURATION: Mesh Screen; SOUND: Solid attack; RESONANCE: No sustain

APPLICATION: General use, versatile head, rock, fusion, studio

**BD20SCR** 20" Mesh Retro Screen® .....\$43.50

**BD22SCR** 22" Mesh Retro Screen® .....\$46.00

**BD24SCR** 24" Mesh Retro Screen® .....\$51.50

## EQ3 Bass Head Sets



Contains: 1 EQ3 batter head, 1 EQ3 resonant head, 1 EQ Pad, and 1 EQ Patch

**BD22B3** 22" EQ3 Set Clear/Black .....\$136.00

**BD22G3** 22" EQ3 Set Clear/Clear .....\$129.00

## Evans PrePaks



### Hitter Profile PrePaks

Hitter Profile PrePak head combinations are designed to give you the right sound for the music you're playing. Also included on the back of each PrePak are our well-known tuning tips and new "Sound Spectrum" charts (shown below) for snare, tom, & bass heads. The chart will help players choose heads by defining their sound. **15% savings per head!**

**EPP-HP1A** HP1 Includes: B12G1, B13G1, B14G1, B16G1 .....\$88.50

**EPP-HP1C** HP1 Includes: B10G1, B12G1, B14G1 (2) .....\$82.50

**EPP-HP2A** HP2 Includes: TT12G1, TT13G1, TT16G1, B14G1D ...\$90.50

**EPP-HP2C** HP2 Includes: TT10G1, TT12G1, TT14G1, B14G1D ...\$84.50

**EPP-HP3A** HP3 Includes: TT12G2, TT13G2, TT16G2, B14G2 .....\$88.50

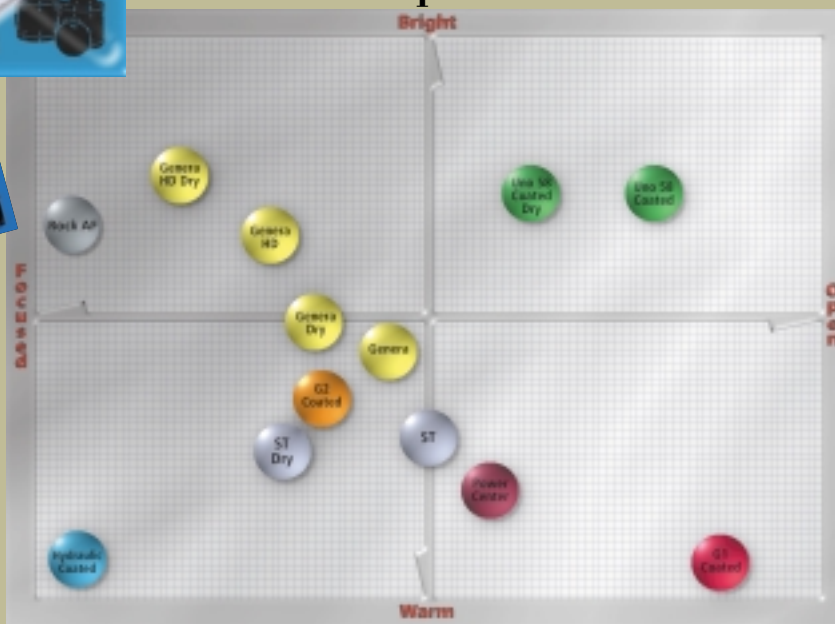
**EPP-HP3B** HP3 Includes: TT12G2, TT13G2, TT16G2, B14G2, BD22GB4 . \$136.00

**EPP-HP3C** HP3 Includes: B12G2, B13G2, B14G2, B16G2 .....\$88.50

**New!** **EPP-HP4A** Fusion Pack includes: TT10G2, TT12G2, TT14G2, B14G1RD \$84.50

**New!** **EPP-HP5A** Retro Pack includes: TT12HG, TT13HG, TT16HG, B14STD . \$96.50

## Evans Sound Spectrum - Snare



## New PrePak Packaging

- Attractive and eye-catching.
- Features Evans helpful tuning tips on the back, along with our new Sound Spectrum chart, which shows the Evans line of heads in an easy-to-read chart that shows visually where each head lies in the spectrum of warmth vs. brightness and openness vs. focus.
- New plastic shell prevents static build-up and profile windows show the construction of each head.

## Accessories

### Evans Magnetic Head Drum Key

Drop-forged drum key is ergonomically designed for comfort and has a knurled knob for quick, easy spinning. Its magnetic head helps prevent slipping and stays in place for fast tightening and loosening. Rattle-free design: grips tight to a tension rod during play so it won't buzz.

**DADK** Evans Magnetic Head Drum Key . . . \$12.50



### Evans Drill Bit Key

Drop-forged bit key is designed to fit most variable speed cordless drills and screwdrivers. Like the drum key, the bit key has rattle-free design.

**DABK** Evans Drill Bit Key . . . \$5.50



### New! AF Patch

Made of Aramid Fiber, the material commonly found in bullet-proof vests, the patch stays on the head permanently with a high-tech adhesive. The AF Patch not only provides unsurpassed durability, it also emphasizes attack characteristics. While the center of the Patch is solid for maximum durability, four radial slits along the perimeter allow the head to vibrate naturally for better tone and feel.

**EQPAF1** Bass Drum AF Patch (2 1/2" diameter) \$12.00



### EQ Bass Drum Patch

#### Black Nylon

Single or Double Pedal

A non-slip flexible Nylon bass drum patch which increases attack and strengthens the head without affecting sound quality.

**EQPB1** Bass Drum Patch Black Single (2) . . . \$9.00

**EQPB2** Bass Drum Patch Double Pedal Black (2) \$9.50



### EQ Bass Drum Patch

#### Clear

Single or Double Pedal

A clear non-slip, plastic bass drum patch which strengthens the head without affecting sound quality.

**EQPC1** Bass Drum Patch Clear (2) . . . \$8.00

**EQPC2** Bass Drum Patch Double Pedal Clear (2) \$8.50



### Evans EQ Pad (Bass Drum Muffling Pad)

The EQ Pad is a highly efficient bass drum muffler that attaches to the bottom of the bass drum shell with Velcro®. The hinged pad bounces off the head, allowing sustain, before returning to damp the vibrating head.

**EQPAD** Bass Drum Muffling Pad . . . \$34.50



### New! EQ Resonance Gate System (RGS) Pad

Another first! The EQRGS Pad eliminates the need for multiple pads to create different damping effects. Whereas our current EQ Pad has a single, hinged muffling pillow on one side, the new EQRGS has a second, smaller muffling pillow on the other side for use with smaller diameter drums. A unique plastic gate attaches to the top of the pad, and can be adjusted to control the length of resonance or sustain of a head. The closer the gate is to the damping pad, the shorter the sustain.

**RGSPAD** EQ Resonance Gate System (RGS) . . \$45.00



### E-Ring

The E-Ring is an easy-to-use external overtone control ring which "floats" on the drumhead. It rounds out and fattens the drumhead's sound and allows for easier tuning.



**E10ER1** Evans 10 E-Ring Pack 10"-1" . . . \$37.00

**E12ER15** Evans 10 E-Ring Pack 12"-1.5" . . . \$42.50

**E13ER15** Evans 10 E-Ring Pack 13"-1.5" . . . \$42.50

**E14ER1** Evans 10 E-Ring Pack 14"-1" . . . \$42.50

**E14ER15** Evans 10 E-Ring Pack 14"-1.5" . . . \$42.50

**E14ER2** Evans 10 E-Ring Pack 14"-2" . . . \$42.50

**E15ER2** Evans 10 E-Ring Pack 15"-2" . . . \$53.00

**E16ER2** Evans 10 E-Ring Pack 16"-2" . . . \$53.00

**E18ER2** Evans 10 E-Ring Pack 18"-2" . . . \$58.00

## EQ Resonance Gate System (RGS) Pad



The following are a series of damping settings that Evans suggests for your bass drum. Images 1-3 show the large hinged pad against the batter head (for larger drums and/or maximum damping). Images 4-6 show the small hinged pad against the batter head (for smaller drums and/or minimum damping). These suggestions are only a guideline. We encourage you to experiment on your own and find the formula that works best for you. Try an EQ Pad against the resonant side for even more damping options.

#### Setup 1

Batter head resonance is longest (hinged pad bounces off head fully and is stopped by plastic gate, allowing head to resonate briefly before damping).

#### Setup 2

Batter head resonance is controlled, feel is firmer (hinged pad bounces off head briefly before being stopped by gate, shortening resonance).

#### Setup 3

Batter head resonance is eliminated, feel is solid (hinged pad held tight against head, creating firm feel and low-end thud).

#### Setup 4

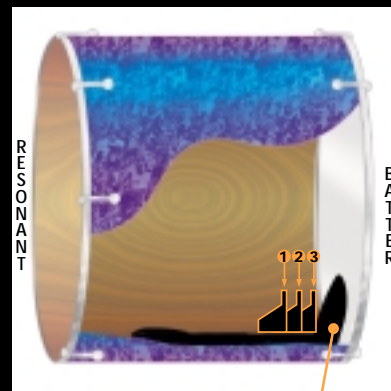
Batter head resonance is longest (hinged pad bounces off head fully and is stopped by plastic gate, allowing head to resonate briefly before damping).

#### Setup 5

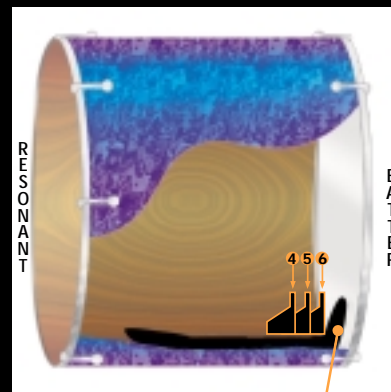
Batter head resonance is controlled, feel is firmer (hinged pad bounces off head briefly before being stopped by gate, shortening resonance).

#### Setup 6

Batter head resonance is eliminated, feel is solid (hinged pad held tight against head, creating firm feel and low-end thud).



LARGE PAD END

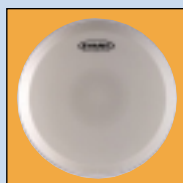


SMALL PAD END



## Conga Heads

Our goal was to produce a synthetic conga head that is superior to any other synthetic head; one that simulates the sound and feel of animal skin while eliminating the problems associated with natural heads. Evans conga heads provide superior tone, reliable durability, and unsurpassed resistance to climatic and temperature changes. A tapered hoop (which provides better fit on out-of-spec. drums) and "V" shaped radial slits (which help seating of the head) are combined with Evans' Tri-Center dot (similar to dots used on Power Center snare heads). The Tri-Center removes unwanted overtones and adds weight to the center, thus dropping the fundamental frequency and producing more low end. The addition of a specially formulated clear coating keeps the head looking sharp and resists finger oil and dirt build-up. Available to fit LP, TOCA, and MEINL professional series congas.



### Heads for LP Giovanni & Extended "Comfort Curve" Hoop Models

EC0975	Fits LP 9.75" Requinto	\$62.50
EC1100E	Fits LP 11" Conga	\$69.00
EC1175E	Fits LP 11 3/4" Conga	\$73.00
EC1250E	Fits LP 12 1/2" Conga	\$79.50

### Heads for LP Models with "Comfort Curve" hoop

EC1100	Fits 11" LP Professional Series*	\$69.00
EC1175	Fits 11 3/4" LP Professional Series*	\$73.00
EC1250	Fits 12 1/2" LP Professional Series*	\$79.50

\*Fits Classic/Salsa/Valje (tight fit)/Gio Old Models/Original & Patato  
Fiberglass/Old Galaxy Fiberglass/Matador Models

### Heads for Meinl Professional Models with "SSR" curved hoop

EC1100E	Fits 11" Meinl Professional Series*	\$69.00
EC1175M	Fits 11 3/4" Meinl Professional Series*	\$73.00
EC1250M	Fits 12 1/2" Meinl Professional Series*	\$79.50

\*Fits Artist models.

### Heads for Toca Professional models with "Easy Play" hoop

EC1100	Fits 11" Toca Professional Series*	\$69.00
EC1175	Fits 11 3/4" Toca Professional Series*	\$73.00

(for 11 3/4" Premier, use EC 1175E)

EC1250	Fits 12 1/2" Toca Professional Series*	\$79.50
--------	----------------------------------------	---------

\* Fits Limited Edition (LE), Custom Deluxe, and Premier models.

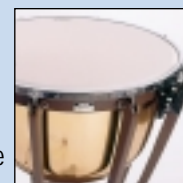


Tim Adams

## Orchestral Drumheads

### Timpani Heads

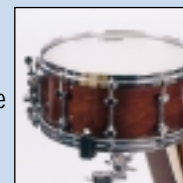
To satisfy the most discerning orchestral percussionist, we settled on a pretensioned head. In fact, this head has a higher degree of pretension than any other synthetic head currently available. A chrome-plated steel insert ring delivers the desired effect when pedaled and affords additional support once the head is under tension. It will perform magnificently at *ppp* with soft mallets, yet will not break up or sound harsh at *fff*. It sustains when asked and mutes softly and quietly with the palm and fingers. Through all this, it retains definite pitch.



ET20	20" Timpani Head	\$89.00
ET22	22" Timpani Head	\$91.50
ET2250	22 1/2" Timpani Head	\$92.00
ET23	23" Timpani Head	\$93.50
ET2350	23 1/2" Timpani Head	\$93.50
ET24	24" Timpani Head	\$93.50
ET2450	24 1/2" Timpani Head	\$93.50
ET25	25" Timpani Head	\$95.50
ET2550	25 1/2" Timpani Head	\$95.50
ET26	26" Timpani Head	\$95.50
ET2650	26 1/2" Timpani Head	\$95.50
ET27	27" Timpani Head	\$98.00
ET2750	27 1/2" Timpani Head	\$98.00
ET2775	27 3/4" Timpani Head	\$98.00
ET28	28" Timpani Head	\$98.00
ET2850	28 1/2" Timpani Head	\$98.00
ET29	29" Timpani Head	\$101.00
ET30	30" Timpani Head	\$103.00
ET3050	30 1/2" Timpani Head	\$103.00
ET31	31" Timpani Head	\$103.00
ET3150	31 1/2" Timpani Head	\$103.00
ET32	32" Timpani Head	\$110.50
ET33	33" Timpani Head	\$110.50
ET3350	33 1/2" Timpani Head	\$110.50
ET34	34" Timpani Head	\$112.50
ET3450	34 1/2" Timpani Head	\$112.50
ET3475	34 3/4" Timpani Head	\$112.50
ET35	35" Timpani Head	\$122.00

### Orchestral Snare Drumheads

The Genera Concert Snare is a thin, 7.5 mil head designed for symphonic playing. It has a warm, open sound and sensitive snare response, along with a wide dynamic range that covers everything from soft, defined, articulate playing to loud dynamic passages that cut through the orchestra (recommended snare side head is 200 weight). The Genera Concert Staccato Snare comes with an internal overtone control ring to increase articulation for delicate passages.



### Orchestral Snare Drumheads

B13GCS	13" Orchestral Snare	\$21.00
B13GCSS	13" Orchestral Staccato Snare	\$24.00
B14GCS	14" Orchestral Snare	\$22.00
B14GCSS	14" Orchestral Staccato Snare	\$25.00

### Orchestral Resonant Drumheads

Orchestral 200	Orchestral 300
S13GEN20 13" Resonant	\$17.00
S13GEN30 13" Resonant	\$17.00
S14GEN20 14" Resonant	\$17.50
S14GEN30 14" Resonant	\$17.50

# Marching Drumheads

## MX Snare Batter

The high tensioning of marching drums, not to mention the exhaustive use, rain or shine, is the acid test of any drumhead. For the record, our aramid fiber snare batter will revolutionize the marching percussion industry because it has a sound and feel like no other. Evans engineers came up with a 20-mil aramid fiber/polyester laminate that features a unique "cross-web/non-weave" process that speaks directly to the concerns of the marching drummer. Our head delivers the extremely high strength and tensile properties customarily associated with aramid fiber, while delivering a softer, more traditional snare drum feel.

And here it gets interesting: One of the reasons marching drummers crank their heads so high is to achieve projection without muddiness caused by excessive ring. The Evans head permits a lower tuning, if desired, yet with maximum projection and definition. To enable this, we added a 3-mil polyester flap that cancels unwanted overtones.

We weren't kidding when we said this head is revolutionary. It offers a tuning and dynamic range, formerly impossible. Available in 13" & 14"

Configuration: Smooth white non-woven aramid fiber/polyester lamination with internal overtone control ring

Thickness: 20mil aramid fiber/polyester, 3mil internal ring

Sound: Bright, cutting staccato, great projection with wider tuning range than competitor's snare heads

Resonance: Short, dry, articulate

Application: Drum Corps/Marching Band, outdoor or indoor competition

**EMS13KB** Evans 13" aramid fiber Snare Batter .....\$63.50

**EMS14KB** Evans 14" aramid fiber Snare Batter .....\$68.50

## MX Snare Side Head

Drummers neglect the snare side until it's too late, forgetting that the bottom is under the same stress as the batter. The new Evans MX snare side head is constructed of a thin aramid fiber/polyester composite and provides maximum snare wire response. It will not collapse under high tensioning. A 3-mil polyester flap reinforces the material and controls overtones, further enhancing articulation. Available in 13" & 14"

Configuration: Woven aramid fiber/polyester lamination

Thickness: 7mil aramid fiber/polyester lamination

Sound: Sensitive, tight, controlled but warm

Resonance: Short, dry, articulate

Application: Drum Corps/Marching Band, outdoor or indoor competition

**EMS13KS** Evans 13" aramid fiber Snare Side .....\$63.50

**EMS14KS** Evans 14" aramid fiber Snare Side .....\$68.50

## MX Marching Snare System

Includes: 1 MX snare head, 1 MX snare side head, 1 X-treme patch, and 1 staccato disk.

**EMS13MXS** Evans 13" MX Marching Snare System .....\$138.00

**EMS14MXS** Evans 14" MX Marching Snare System .....\$149.00

## Marching Bass Head\*

Instantly we have the cannon-like punch with pinpoint accuracy so necessary on the field. This is a 10-mil smooth white head, with a unique tone damping system that enables articulation previously unheard of in marching applications. A single 6.5-mil internal flap holds in place a series of eight damping inserts:



## Marching Bass Head (CONTINUED)

these can actually be reconfigured to customize the level of muffling/articulation! This is a first in marching percussion.

Available in 16", 18", 20", 22", 24", 26", 28", 30", 32"

Configuration: Smooth white, internal overtone control ring, felt muffling areas

Thickness: Single ply: 10 mil; Internal overtone control ring 10 mil

Sound: Big articulate sound, solid attack, great projection

Resonance: Focused, short sustain

Application: Drum Corps/Marching Band, outdoor or indoor competition

**EMB16BD** Evans 16" Marching Bass Drum .....\$53.00

**EMB18BD** Evans 18" Marching Bass Drum .....\$55.50

**EMB20BD** Evans 20" Marching Bass Drum .....\$57.50

**EMB22BD** Evans 22" Marching Bass Drum .....\$60.00

**EMB24BD** Evans 24" Marching Bass Drum .....\$63.50

**EMB26BD** Evans 26" Marching Bass Drum .....\$70.50

**EMB28BD** Evans 28" Marching Bass Drum .....\$79.00

**EMB30BD** Evans 30" Marching Bass Drum .....\$84.50

**EMB32BD** Evans 32" Marching Bass Drum .....\$89.50

## Marching G2 (Tenor)

The challenge here was to produce a strong head that would withstand high tension and the impact of heavy sticks & mallets - yet would project musical pitches across a football field. We succeeded with our Marching Tom heads, which consist of two plies of 7-mil polyester film (the same film we use for our G2's). The Evans Tenor heads provide exceptional tone, resonance, and durability, and are available for all marching tenors.

Available in 6", 8", 10", 12", 13", 14", 15", 16"

Configuration: Clear; Thickness: 2-Ply (outer ply: 7mil; inner: 7 mil)

Sound: High tuning: bright, articulate, great projection

Resonance: Short controlled sustain

Application: Drum Corps/Marching Band, outdoor or indoor competition

**EMT06G2** Evans 6" Marching G2 (Tenor) .....\$17.00

**EMT08G2** Evans 8" Marching G2 (Tenor) .....\$17.50

**EMT10G2** Evans 10" Marching G2 (Tenor) .....\$18.00

**EMT12G2** Evans 12" Marching G2 (Tenor) .....\$19.50

**EMT13G2** Evans 13" Marching G2 (Tenor) .....\$21.00

**EMT14G2** Evans 14" Marching G2 (Tenor) .....\$22.50

**EMT15G2** Evans 15" Marching G2 (Tenor) .....\$24.00

**EMT16G2** Evans 16" Marching G2 (Tenor) .....\$25.50

## Marching Staccato Disk\*

Again, we set our sights on an area many drummers ignore: the snare side. The Staccato Disk is a flat circle of Retro Screen mesh fitted to the snare-side head. While further eliminating unwanted overtones, it will maintain snare wire "snap" and response. This accessory will be particularly viable in indoor marching competitions.

**EMA13SD** Evans 13" Marching Staccato Disk .....\$19.50

**EMA14SD** Evans 14" Marching Staccato Disk .....\$20.50

## Marching X-Treme Patch\*

One drum, one sound, right? Not any more! The X-Treme Patch is the ticket to drawing several sounds - what we call "zones of expression" - out of a single drumhead. A black Polycarbonate patch adheres to the head, effectively dividing it into distinct playing areas, each offering its own feel and sound. Among these is a grid-like zone, over which a stick can be dragged to simulate a guiro!

**EMAXP** Evans Marching X-treme Patch .....\$15.50

\*patent pending

**Bulk Packs**

Each Evans Bulk Pack holds 10 unpackaged, individually bar-coded drumheads, and less packaging equals a 15% savings per head! The space-saving Bulk Pack fits easily on your countertop or in a Bulk Pack display rack, which holds 2 Bulk Packs and fits on slatwall or pegboard (display rack is FREE with purchase of 2 Bulk Packs or 20 bulk heads).

Item	Description	retail \$ (per head)
EB B14G1	Tom Tom 14" Genera G1 Coated	\$22.50
EB B14G1D	Snare Drum 14" Power Center G1 Ctd.	\$25.00
EB B14G1RD	Snare Drum 14" Power Center Rev. Dot G1 Ctd.	\$25.00
E10PD-E	Slatwall mounting rack for Bulk Packs free with purchase of 20 bulk heads or 2 Bulk Packs.	

**EMD-S: accommodates 8" - 12" heads****Evans Modular Displays & Pre-Arranged Drumhead Assortments**

Evans modular wall displays easily mount on slatwall and hold 30 heads apiece in varying drumhead box configurations from 8" - 16" in diameter. Highly visible, neat, and easy to keep organized, thanks to the color-coded Plan-O-Grams. Custom Plan-O-Grams are available for each display.

EMD-S	Evans Modular Display—Small	\$35.00
EMD-M	Evans Modular Display—Med	\$35.00
EMD-M30	Evans 30-Head Assortment—sizes 12-16 inch heads	\$655.50
EMD-M60	Evans 60-Head Assortment—sizes 12-16 inch heads	\$1,369.50

**EMD-M: accommodates 12" - 16" heads****EMD-M30****Evans 30-Piece Modular Wall Display Plan-O-Gram includes:**

Item #	Description	Qty in Display
B12G1	TT 12 Genera G1 Coated White	2
TT12G1	TT 12 Genera G1 Clear	1
B12G2	TT 12 Genera G2 Coated White	2
TT12G2	TT 12 Genera G2 Clear	2
B13G1	TT 13 Genera G1 Coated White	2
TT13G1	TT 13 Genera G1 Clear	1
B13G2	TT 13 Genera G2 Coated White	2
TT13G2	TT 13 Genera G2 Clear	2
B14G1	TT 14 Genera G1 Coated White	2
TT14G1	TT 14 Genera G1 Clear	1
B14G2	TT 14 Genera G2 Coated White	1
TT14G2	TT 14 Genera G2 Clear	2
B14G1D	SD 14 Power Center	2
B14G1RD	SD 14 Power Center Reverse Dot	1
B14STD	SD 14 ST Dry Coated White	1
S14H30	SS 14 Snare Side Hazy 300	2
B16G1	TT 16 Genera G1 Coated White	1
TT16G1	TT 16 Genera G1 Clear	1
B16G2	TT 16 Genera G2 Coated White	1
TT16G2	TT 16 Genera G2 Clear	1
TOTALS		30

**EMD-M60****Evans 60-Piece Modular Wall Display Plan-O-Gram includes:**

Item #	Description	Qty in Display
B14G1D	SD 14 Power Center	5
B12G1	TT 12 Genera G1 Coated White	2
B12G2	TT 12 Genera G2 Coated White	2
B13G1	TT 13 Genera G1 Coated White	2
B13G2	TT 13 Genera G2 Coated White	2
B14DRY	SD 14 Genera Dry Coated White	2
B14G1	TT 14 Genera G1 Coated White	6
B14G1RD	14 Power Center Reverse Dot	4
B14G2	TT 14 Genera G2 Coated White	3
B14HDD	SD 14 Genera HD Dry Coated White	1
B14STD	SD 14 ST Dry Coated White	3
B16G1	TT 16 Genera G1 Coated White	2
B16G2	TT 16 Genera G2 Coated White	2
S14H30	SS 14 Snare Side Hazy 300	4
TT12G1	TT 12 Genera G1 Clear	1
TT12G2	TT 12 Genera G2 Clear	2
TT13G1	TT 13 Genera G1 Clear	1
TT13G2	TT 13 Genera G2 Clear	2
TT14G1	TT 14 Genera G1 Clear	2
TT14G2	TT 14 Genera G2 Clear	5
TT14GR	TT 14 Genera Resonant Clear	1
TT14HG	TT 14 Hydraulic Glass	1
TT16G1	TT 16 Genera G1	2
TT16G2	TT 16 Genera G2 Clear	2
TT16GR	TT 16 Genera Resonant Clear	1
TT16HG	TT 16 Hydraulic Glass	1
TOTALS		60



## EFD2000: Evans Floor Display



## Evans Floor Displays & Pre-Arranged Drumhead Assortments

The new Evans floor display fits in the same footprint as our previous model (item # EFD), yet holds 1/3 more heads (150 total)! The Evans floor display comes unloaded. Color-coded Plan-O-Grams make restocking a snap.

**EEFD2000** Evans Floor Display . . . . . \$265.00

**EFD-150D** Evans 150 Drumset Head Assortment—sizes 8-22 inch heads . . . \$4,447.50

**EFD-150M** Evans 150 Mixed Head Assortment—sizes 8-22 inch heads . . . . \$5,200.50

*Note: Contact your D'Addario sales representative for additional information on these prearranged Plan-O-Gram head assortments.*

### EFD-150D

Evans Floor Display Plan-O-Gram includes:

Item #	Description	Qty in Display	Item #	Description	Qty in Display
B08G1	TT 08 Genera G1 Coated White	1	TT14GR	TT 14 Genera Resonant Clear	1
TT08G1	TT 08 Genera G1 Clear	2	TT14HG	TT 14 Hydraulic Glass	1
B08G2	TT 08 Genera G2 Coated White	1	B14G1D	SD 14 Power Center	3
TT08G2	TT 08 Genera G2 Clear	2	B14G1RD	SD 14 Power Center Reverse Dot	3
TT08GR	TT 08 Genera Resonant Clear	1	B14GEN	SD 14 Genera Coated White	2
TT08HG	TT 08 Hydraulic Glass	1	B14DRY	SD 14 Genera Dry Coated White	2
B10G1	TT 10 Genera G1 Coated White	3	B14HD	SD 14 Genera HD Coated White	2
TT10G1	TT 10 Genera G1 Clear	2	B14HDD	SD 14 Genera HD Dry Coated White	2
B10G2	TT 10 Genera G2 Coated White	3	B14STD	SD 14 ST Dry Coated White	3
TT10G2	TT 10 Genera G2 Clear	4	S14H30	SS 14 Snare Side Hazy 300	3
TT10GR	TT 10 Genera Resonant Clear	1	B16G1	TT 16 Genera G1 Coated White	4
TT10HG	TT 10 Hydraulic Glass	1	TT16G1	TT 16 Genera G1 Clear	3
B12G1	TT 12 Genera G1 Coated White	4	B16G2	TT 16 Genera G2 Coated White	5
TT12G1	TT 12 Genera G1 Clear	3	TT16G2	TT 16 Genera G2 Clear	5
B12G2	TT 12 Genera G2 Coated White	4	TT16GR	TT 16 Genera Resonant Clear	2
TT12G2	TT 12 Genera G2 Clear	5	TT16HG	TT 16 Hydraulic Glass	1
TT12GR	TT 12 Genera Resonant Clear	1	BD20GB1	BD 20 Genera EQ1 Clear	2
TT12HG	TT 12 Hydraulic Glass	1	BD20GB3	BD 20 Genera EQ3 Clear	2
B13G1	TT 13 Genera G1 Coated White	5	BD20GB4	BD 20 Genera EQ4 Clear	2
TT13G1	TT 13 Genera G1 Clear	3	BD20RA	BD 20 Genera EQ1 Resonant Black	1
B13G2	TT 13 Genera G2 Coated White	3	BD20RB	BD 20 Genera EQ3 Resonant Black	2
TT13G2	TT 13 Genera G2 Clear	4	BD22GB1	BD 22 Genera EQ1 Clear	2
TT13GR	TT 13 Genera Resonant Clear	1	BD22GB2	BD 22 Genera EQ2 Clear	2
TT13HG	TT 13 Hydraulic Glass	1	BD22GB3	BD 22 Genera EQ3 Clear	4
B13G1D	SD 13 Power Center	1	BD22GB4	BD 22 Genera EQ4 Clear	5
B13G1RD	SD 13 Power Center Reverse Dot	2	BD22RA	BD 22 Genera EQ1 Resonant Black	1
B14G1	TT 14 Genera G1 Coated White	6	BD22RB	BD 22 Genera EQ3 Resonant Black	2
TT14G1	TT 14 Genera G1 Clear	3	BD22SCR	BD 22 Fabric Mesh Retro Screen	1
B14G2	TT 14 Genera G2 Coated White	4	BD22B3	BD 22 Genera EQ3 Set Clear/Black	3
TT14G2	TT 14 Genera G2 Clear	5			

## EIS: Evans Inventory System



### Evans Inventory System

Evans displays empty fast, so you'll want to keep a backstock of popular heads, PrePaks, and accessories. Why not keep them organized in an Evans Inventory System? Designed for storage in a stockroom, the Evans Inventory System is perfect for storing popular, quick-turning Evans snare heads, bass heads, PrePaks, EQ Pads, or whatever Evans items you need to stock up on.

**EIS** Evans Back Stock Storage unit . . . . . retail value: \$215.00

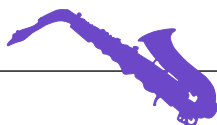


## Clarinet Reeds



boxes of 10							boxes of 5		
Ab	Eb	Bb					Alto	Bass	Contrabass
Piccolo \$33.60	Traditional \$24.95	Traditional \$24.95	Hand Select \$51.75	German \$33.60	Black Master \$33.60	V+12 \$33.60	Traditional \$32.35	Traditional \$23.40	Traditional \$53.50
1	CR111	CR101					CR141	CR121	1
1½	CR1115	CR1015		CR1615			CR1415	CR1215	1½
2	CR132	CR112	CR102	CR172	CR162	CR182	CR142	CR122	2
2½	CR1125	CR1025	CR1725	CR1625	CR1825	CR1925	CR1425	CR1225	2½
3	CR133	CR113	CR103	CR173	CR163	CR183	CR193	CR143	3
3½	CR1135	CR1035	CR1735	CR1635	CR1835	CR1935	CR1435	CR1235	3½
4	CR134	CR114	CR104	CR174	CR164	CR184	CR194	CR144	4
4½						CR1945			4½
5		CR105	CR175	CR165	CR185	CR195		CR125	5
5+					CR186	CR196			5+

## Saxophone Reeds



boxes of 10								boxes of 5							
Soprano Soprano				Alto				Tenor				Baritone Bass			
Traditional \$24.95	Traditional \$24.95	Java \$24.95	V16 \$24.95	Traditional \$32.35	Selected \$64.95	Java \$32.35	V16 \$32.35	Traditional \$22.75	Selected \$46.55	Java \$22.75	V16 \$22.75	Traditional \$41.65	Traditional \$53.50		
1		SR201		SR211		SR261		SR221		SR271			1		
1½		SR2015		SR2115		SR2615	SR7015	SR2215		SR2715	SR7215		1½		
2	SR232	SR202	SR302	SR712	SR212	SR282	SR262	SR702	SR222	SR292	SR272	SR722	SR242	SR252	2
2½		SR2025	SR3025	SR7125	SR2125	SR2825	SR2625	SR7025	SR2225	SR2925	SR2725	SR7225	SR2425		2½
3	SR233	SR203	SR303	SR713	SR213	SR283	SR263	SR703	SR223	SR293	SR273	SR723	SR243	SR253	3
3½		SR2035	SR3035	SR7135	SR2135	SR2835	SR2635	SR7035	SR2235	SR2935	SR2735	SR7235	SR2435		3½
4	SR234	SR204	SR304	SR714	SR214	SR284	SR264	SR704	SR224	SR294	SR274	SR724	SR244	SR254	4
5				SR215	SR285		SR705	SR225		SR275	SR725	SR245			5

Double Reeds	each	per 10 pieces					per ½ kilo
	Finished Reeds	Gougéd Cane		Gougéd and Shaped Cane		Gougéd, Shaped Profiled Cane	Tube Cane
English Horn	EH10 \$31.90	EC20 \$38.55	ECS30 \$51.25				
Heckel Bassoon	HB10 \$38.00	HC20 \$37.65	HBS30 \$50.50		HBSP40 \$81.00		RHB50 \$55.40
Heckel Contrabassoon	HC10 \$44.05						
Sarrusophone	SA10 \$64.95						
	Finished Reeds	Gougéd Cane			Gougéd and Shaped Cane		per 1 lb. Tube Cane
Oboe Conservatory		soft	medium	hard	soft	medium	ROC50-1
	OR10 \$31.90	OC20 \$38.55	OC21 \$38.55	OC22 \$38.55	OCS30 \$51.25	OCS31 \$51.25	100–105mm \$147.00
							ROC50-2 105–110mm \$147.00



**Greg Osby**  
uses V16 #3  
alto sax reeds



## Twin Packs

The Vandoren Twin Pack consists of two reeds sold in an attractive, reusable reed protector that is perfect for students or for players who want to try a new reed or reed strength.

The new Twin Packs are available for Traditional and V•12 Bb clarinet and Traditional,

V16, and Java alto saxophone reeds in strength numbers 2, 2½, 3, 3½, and 4. The Twin Packs come in plastic sleeve dispensers, with 25 Twin Packs per sleeve. An attractive display unit is also available to hold the sleeves for easy dispensing.

### Clarinet

CR1015TP BB Clarinet Reed #1½ Twin Pack	\$5.99
CR102TP BB Clarinet Reed #2 Twin Pack	\$5.99
CR1025TP BB Clarinet Reed #2½ Twin Pack	\$5.99
CR103TP BB Clarinet Reed #3 Twin Pack	\$5.99
CR1035TP BB Clarinet Reed #3½ Twin Pack	\$5.99
CR104TP BB Clarinet Reed #4 Twin Pack	\$5.99
CR1925TP BB Clarinet V.12 Reed #2½ Twin Pack	\$7.99
CR193TP BB Clarinet V.12 Reed #3 Twin Pack	\$7.99
CR1935TP BB Clarinet V.12 Reed #3½ Twin Pack	\$7.99
CR194TP BB Clarinet V.12 Reed #4 Twin Pack	\$7.99
CR1945TP BB Clarinet V.12 Reed #4½ Twin Pack	\$7.99

### Saxophone

SR2115TP Alto Sax Reed #1½ Twin Pack	\$7.75
SR212TP Alto Sax Reed #2 Twin Pack	\$7.75
SR2125TP Alto Sax Reed #2½ Twin Pack	\$7.75
SR213TP Alto Sax Reed #3 Twin Pack	\$7.75
SR2135TP Alto Sax Reed #3½ Twin Pack	\$7.75
SR214TP Alto Sax Reed #4 Twin Pack	\$7.75
SR702TP V16 Alto Sax #2 Twin Pack	\$7.75
SR7025TP V16 Alto Sax #2½ Twin Pack	\$7.75
SR703TP V16 Alto Sax #3 Twin Pack	\$7.75
SR7035TP V16 Alto Sax #3½ Twin Pack	\$7.75
SR704TP V16 Alto Sax #4 Twin Pack	\$7.75
SR262TP Java Alto Sax #2 Twin Pack	\$7.75
SR2625TP Java Alto Sax #2½ Twin Pack	\$7.75
SR263TP Java Alto Sax #3 Twin Pack	\$7.75
SR2635TP Java Alto Sax #3½ Twin Pack	\$7.75
SR264TP Java Alto Sax #4 Twin Pack	\$7.75

See page 45 for our new  
Twin Pack Display & Assortments

## Clarinet Mouthpieces



Bb		Profile 88	TwoTone
	\$99.15	\$99.15	\$115.25
5RV	CM301	CM3018	CM3018R
5RV	CM302	CM3028	CM3028R
B44	CM303	CM3038	
11•1	CM304	CM3048	
11•6	CM305	CM3058	
B46	CM306	CM3068	
B40	CM307	CM3078	CM3078R
**B45	CM308	CM3088	CM3088R
B45•	CM309	CM3098	CM3098R
5JB	CM310	CM3108	CM3108R
2RV	CM311	CM3118	
B45	CM312	CM3128	CM3128R
M15		CM3178	
** B45 with ligature & cap - CM308K \$148.75			

### 13 Series Bb

Profile 88	\$107.95	Profile 88	\$107.95
M13	CM4138	5RV13	CM4018
V13	CM4148	5RV13	CM4028
M13	CM4158	B4013	CM4078
M14	CM4168	B4513	CM4088
M15	CM4178		

Eb	\$99.15	Alto	\$145.50
5RV	CM321	5RV	CM331
B44	CM322	B44	CM332
B40	CM323	B40	CM333

German Bb small	\$128.95	wide	\$128.95
VD2	CM372	VD2	CM382
VD3	CM373	VD3	CM383
VD4	CM374	VD4	CM384

Austrian Bb	\$128.95
VA0	CM390
VA5	CM395




Bass	\$173.25
B30	CM341
B44	CM342
B40	CM343
B45	CM344
B46	CM345







# Saxophone Mouthpieces

## V Series

### Soprano \$111.85

S15	SM401
■ S25  	SM402
S27	SM404
■ S35 	SM403

### Alto \$123.95

A15	SM411
A17	SM418
A20	SM412
A25	SM413
■ A27	SM414
A28	SM419
■ A35  	SM415
A45 	SM416
A55 	SM417

### Tenor \$138.35

T15	SM421
■ T20	SM422
T25	SM423
T27	SM425
T35	SM424

## AVA Series

### Alto \$148.25

A35	SM501
■ A45	SM502
A55	SM503
A75	SM504
A95	SM505

### Tenor \$149.95

T45	SM511
T55	SM512
T75	SM513
T95	SM514
T97	SM515

## JUMBO AVA Series

### Alto \$148.25



A35	SM601
■ A45	SM602
A55	SM603
A75	SM604
A95	SM605

### Tenor \$149.95

■ T45	SM611
T55	SM612
■ T75	SM613
T95	SM614
T97	SM615



### Baritone \$244.75

B25	SM431
B27	SM435
B35	SM432
B75 	SM433
B95 	SM434

### Sopranino \$220.45

SM550

### Bass Sax \$254.35

SM560



## ✓16 Ebonite Mouthpiece **NEW!**

### Alto \$123.95

	small	medium
A5	SM811S	SM811M
A6	SM812S	SM812M
A7	SM813S	SM813M



## ✓16 Metal Mouthpiece

### Tenor \$384.75

T45	SM821
T55	SM822
■ T75	SM823
T77	SM824
T95	SM825



## ✓16 Metal Mouthpiece, Optimum Ligature, & Cap


### Tenor \$495.00

T45	SM821KOP
T55	SM822KOP
T75	SM823KOP
T77	SM824KOP
T95	SM825KOP



■ bestsellers

● new

 jazz mouthpiece jazz/classical mouthpiece

**David Sanchez**  
uses  
Vandoren  
Reeds








## Optimum Ligatures & Caps

	ligature & cap	ligature only	metal cap only	metal ligature & plastic cap	plastic cap only
<b>Clarinet</b>	<b>silverplated</b>	<b>silverplated</b>	<b>silverplated</b>	<b>silverplated</b>	
Bb Clarinet	LC731A \$114.95	L911A \$71.85	C731A \$47.95	LC731A-PC \$80.75	C731-PC \$9.25
Eb Clarinet	LC732A \$118.95	L912A \$70.95	C732A \$54.95		
Alto Clarinet	LC733A \$125.50	L913A \$82.45	C733A \$57.95		
Bass Clarinet	LC734A \$138.50	L914A \$89.20	C734A \$71.95		

<b>Saxophone</b>	<b>gold gilded</b>	<b>gold gilded</b>	<b>gold gilded</b>	<b>gold gilded</b>	
Soprano Saxophone V5	LC831 \$122.95	L931 \$72.75	C831 \$58.95		
Alto Saxophone V5, Java, Jumbo, V16	LC832 \$121.95	L932 \$71.75	C832 \$56.95	LC832-PC \$80.75	C832-PC \$9.25
Tenor Saxophone V5, Java, Jumbo	LC833 \$129.95	L933 \$82.45	C833 \$62.95		
Tenor Saxophone V16	LC836 \$128.95	L936 \$71.95	C836 \$64.95		
Baritone Saxophone V5	LC834 \$142.95	L934 \$89.25	C834 \$74.95		

## Replacement plates for Optimum Ligature

	plate 1 	plate 2 	plate 3 
<b>Clarinet \$8.75 each</b>	<b>silverplated</b>	<b>silverplated</b>	<b>silverplated</b>
Bb/Eb/Alto Clarinet	VP14-1C	VP14-2C	VP14-3C
Bass Clarinet	VP15-1C	VP15-2C	VP15-3C
<b>Saxophone \$8.75 each</b>	<b>gold gilded</b>	<b>gold gilded</b>	<b>gold gilded</b>
Soprano/Alto Saxophone	VP14-1S	VP14-2S	VP14-3S
Tenor/Tenor V16 Saxophone	VP15-1S	VP15-2S	VP15-3S
Baritone Saxophone	VP15-1SB	VP15-2S	VP15-3S

## Masters Ligatures and Caps

<b>Clarinet</b>	Nickel	Black	Silver	Flexible
Bb	LC701 \$61.75	LC705 \$61.75	LC706 \$91.95	LC711 \$46.25
Eb	LC702 \$61.75			LC712 \$46.25
Alto	LC703 \$80.45			LC713 \$46.25
Bass	LC704 \$80.45			LC714 \$46.25

## Masters Ligatures Only

<b>Clarinet</b>	Nickel Plated	Black
Bb	L901 \$29.25	L905 \$29.25
Eb	L902 \$29.25	
Alto	L903 \$37.45	
Bass	L904 \$37.45	

<b>Saxophone</b>	Lacquered Brass	Flexible
Soprano	LC801 \$70.50	LC811 \$46.25
Alto	LC802 \$70.50	LC812 \$46.25
Tenor	LC803 \$79.95	LC813 \$46.25
Baritone	LC804 \$96.35	LC814 \$46.25
Tenor V16		LC816 \$46.25

<b>Saxophone</b>	Lacquered Brass
Soprano	L921 \$32.25
Alto	L922 \$32.25
Tenor	L923 \$39.65
Baritone	L924 \$49.55

# Accessories

## Reed Cases

An elegantly designed reed case provides maximum protection and moisture control for your reeds.

### VRC10 \$13.20

Holds 4 of any Ab, Eb, or Bb clarinet, soprano or soprano sax reeds.

### VRC20 \$13.20

Holds any combination of 4 alto clarinet or alto sax reeds.

### VRC30 \$15.50

Holds 4 of any tenor and baritone sax or bass clarinet reeds.

### VRCK \$4.60

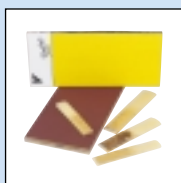
3 replacement desiccants and a sponge insert for the reed case.



## Reed Resurfacer

### RR100 \$25.15

Easily restore the table of any reed to a perfectly flat surface.



## Cork Grease

Pleasantly scented with appleblossom fragrance.

Vandoren cork grease has long been a favorite among students and professionals.

### CG200 \$88.20

Injection molded gravity feed display prepacked with 36 tubes of cork grease. Hangs on wall or sits on counter.

### CG100-B \$2.35

Cork grease by the tube, convenient for refilling your display unit.

### CG300 \$57.75

Cardboard display box prepacked with 24 tubes of cork grease.



## Reed Trimmer replacement blade and pad

### RB10 \$4.65

Replacement blade and pad

## Swab

### SW100 \$25.75

Fine quality pure cotton swab



## Pouch

### P100 \$11.80

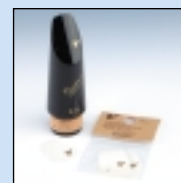
Great for protecting valuable mouthpieces, caps, and ligatures.



## Mouthpiece Cushions

### VMC5 \$8.35

Protects the mouthpiece from toothmarks. Five mouthpiece cushion pack.



## Vandoren Sax Strap

### VSS101 \$20.70

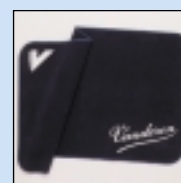
Durable black nylon strap gives sax players extra support.



## Counter Mat

### VMAT - call for pricing

Blue flannel mat to protect counter top and instruments.



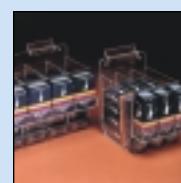
## Lucite Displays

Empty modular reed displays for slotwall, pegboard, or counter.

**VRDC3** Holds alto sax and clarinet

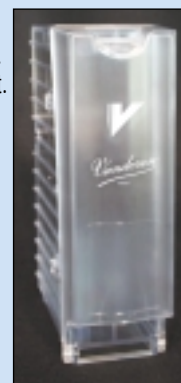
**VRDC4** Holds tenor sax and bass clarinet

Call for pricing



## New! Twin Pack Displays

An attractive Twin Pack display holds 15 Twin Packs. Displays comes free with each preloaded assortment.



## Preloaded Kits

**VTP15-01** Traditional Bb Clarinet Twin Pack Loaded Display

includes: CR102TP (7), CR1025TP (15), CR103TP (15), CR1035TP (7), 4 free displays .....\$263.56

**VTP15-02** Traditional Sax Twin Pack Loaded Display includes:

SR212TP (7), SR2125TP (15), SR213TP (15), SR2135TP (7), 4 free displays .....\$341.00

**VTP15-03** Java Sax Twin Pack Loaded Display includes:

SR262TP (8), SR2625TP (10), SR263TP (12), 3 free displays .....\$232.50

**VTP15-04** V•12 Clarinet Twin Pack Loaded Display includes:

CR1925TP (5), CR193TP (15), CR1935TP (10), 3 free displays .....\$239.70

**VWD-2** Empty Twin Pack Display .....\$2.50





**DC17**  
**D'Addario Mug**  
retail: \$4.00



**EV20**  
**Evans Mug**  
retail: \$4.00



**DC16 D'Addario Pint**  
**Glass**  
retail: \$3.00



**DC15 D'Addario**  
**Concert Binoculars**  
retail: \$45.00



26M, L, XL, XXL,  
**D'Addario See Dick Rock Tee** retail: \$12.50



25M, L, XL, XXL  
**D'Addario Player's**  
**Choice Tee**  
retail: \$12.50

**DC56M, L, XL, XXL, D'Addario**  
**"More Than Meets The Eye"**  
**Long Sleeve Tee**  
retail: \$17.50



**DC37 D'Addario**  
**Guitar Stool**  
retail: \$50.00



**DC55 D'Addario**  
**Flop Hat**  
retail: \$17.50



**DC49NB (navy)**  
**DC49G (green)**  
**D'Addario Hat**  
retail: \$15.00



**DC23EV Evans Black**  
**Embroidered Hat**  
retail: \$15.00



22M, L, XL, D'Addario  
Orchestral Tee  
retail: \$12.50



EV51M, L, XL, XXL  
Evans Chrome Billboard Tee  
retail: \$12.50



PW01M, L, XL, XXL  
Planet Waves Lizard Tee  
retail: \$12.50



20M, L, XL, XXL  
Evans Drumhead Tee  
retail: \$12.50



24M, L, XL, D'Addario Wound Strings Tee  
retail: \$12.50



DC57M, L, XL  
D'Addario Bowed Polo Shirt  
retail: \$19.95

**Remember - our swag changes, so check out our website for the latest offerings.**



**J. D'Addario & Company, Inc.**  
**PO Box 290**  
**Farmingdale, NY 11735 USA**  
**[www.daddario.com](http://www.daddario.com)**

**1-800-DADARIO (323-2746)**  
**Tel: 631-439-3300**  
**Fax: 631-439-3333**

Prices effective February 1st, 2001.  
Prices subject to change without notice.  
FDDC3-2/01