

MPC 67

MPC 67 RC

Acoustical Boundary
Microphones



FEATURES

- "Intelligent" acoustical boundary microphone
- ON/OFF, PTT and PTM function
- RISC- μ C controlled
- LED-indicator
- Half-cardioid polar pattern
- Flat, wide frequency response
- Switchable frequency response correction
- High-gain-before-feedback
- **MPC 67 RC:** Remote control of the switch and triggering of an external contact

APPLICATIONS

The MPC 67 is an acoustical boundary microphone with many different functions accommodated in a small, unobtrusive housing.

Depending on the application, you can choose between three operating modes: On/Off, Push To Talk and Push To Mute. Furthermore, the frequency response can be tailored for use in three modes: linear, 80 Hz bass roll off, 180 Hz bass roll off.

The MPC 67 is switched on and off with a noiseless film button. An LED indicator shows the ready-to-talk status. The different functions are controlled by an 8 bit micro controller. Due to its unobtrusive design, the MPC 67 is ideal for tele/video conferencing, round table discussions or distance learning.

The MPC 67 RC is available with a remote control: the microphone can be activated by an external switch and an external device (e.g. video camera) can be triggered by a MOSFET output.

VERSIONS

MPC 67 sw	black version with built-in pre-amp, incl. MVK SF/3-C/3 connecting cable	Order # 446.637
MPC 67 RC sw	black version with built-in pre-amp, + remote control option, incl. MVK SF/5-C/5 connecting cable	Order # 446.963

Germany
Theresienstr. 8
D-74072 Heilbronn
Tel. +49 (0)71 31 / 6 17-0
Fax +49 (0)71 31 / 617-224
E-mail: info@beyerdynamic.de
Internet: www.beyerdynamic.de

United States
56 Central Ave.
Farmingdale, NY 11735
Tel. +1 (631) 293-3200
Fax +1 (631) 293-3288
E-mail: salesUSA@beyerdynamic.com
Internet: www.beyerdynamic.com

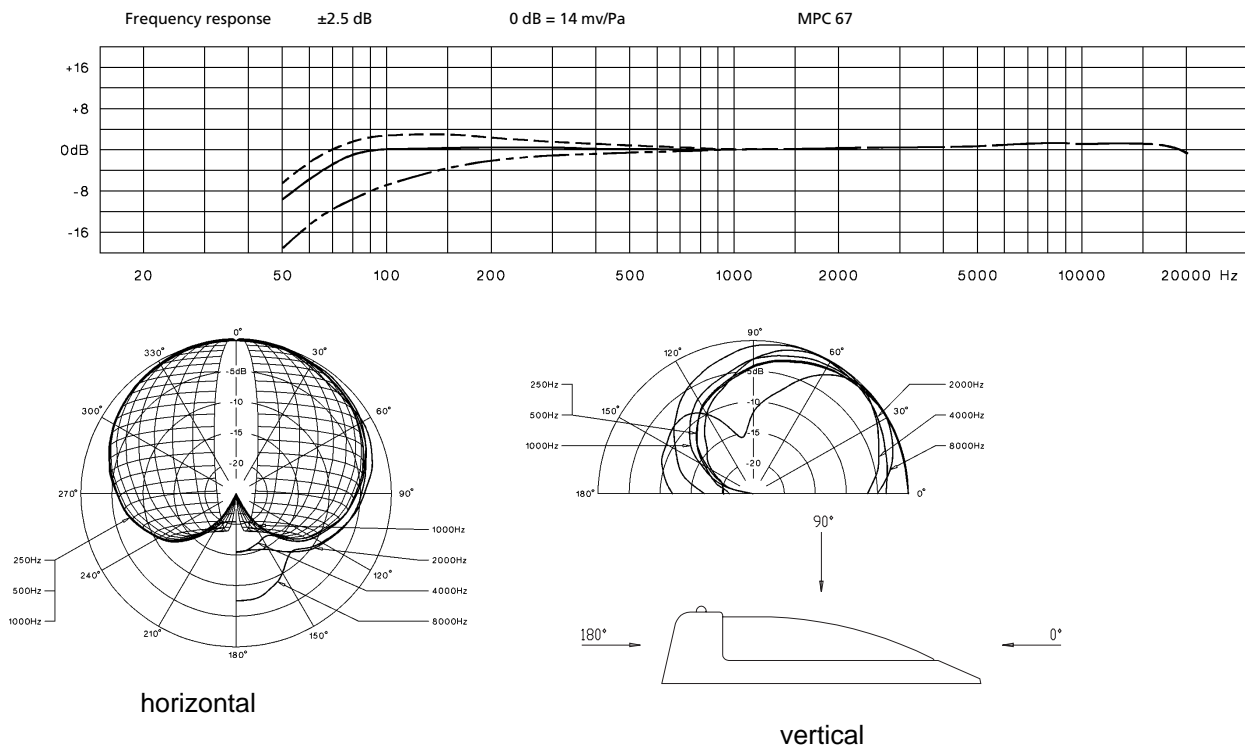
Great Britain
17 Albert Drive
Burgess Hill RH15 9TN
Tel. +44 (0)1444 / 258 258
Fax +44 (0)1444 / 258 444
E-mail: sales@beyerdynamic.co.uk
Internet: www.beyerdynamic.co.uk

TECHNICAL SPECIFICATIONS

Transducer type	Condenser (back electret)
Operating principle	Pressure gradient
Frequency response	60 - 20,000 Hz
Polar pattern	Semi-cardioid
Open circuit voltage	14 mV/Pa \pm -37 dBV
Nominal output impedance	180 Ω
Load impedance	\geq 1000 Ω
Max. SPL (f = 1 kHz; k < 1%)	121 dB
Signal-to-noise ratio rel. to 1 Pa	60 dB
A-weighted equivalent SPL	approx. 26 dB
Supply voltage	15 - 48 V phantom power
Consumption	approx. 5.6 mA
Connection	switchcraft Tini Q-G mini-plug TB3M (MPC 67); TB5M (MPC 67 RC)
Dimensions (L x W x H)	105 x 76 x 25 mm
Weight without cable	140 g

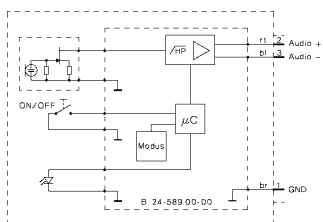
FREQUENCY RESPONSE & POLAR PATTERN

This frequency response curve (measuring tolerance \pm 2.5 dB) and polar patterns correspond to a typical production sample for this microphone.

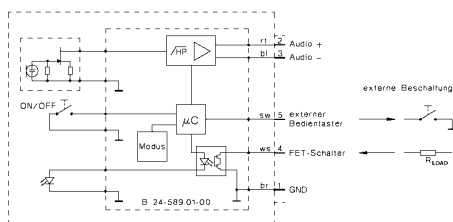


WIRING DIAGRAMS

MPC 67



MPC 67 RC



rt = rot / red
 bl = blau / blue
 sw = schwarz / black
 ws = weiß / white
 br = braun / brown

Photos are non-contractual. Contents subject to change without notice.