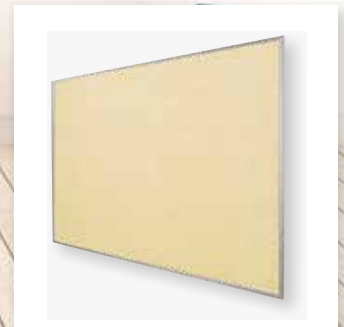
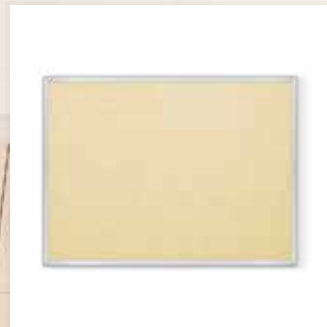


VINYL ADD-CORK TACKBOARD

with Aluminum Trim

10
YEAR LIMITED
WARRANTY

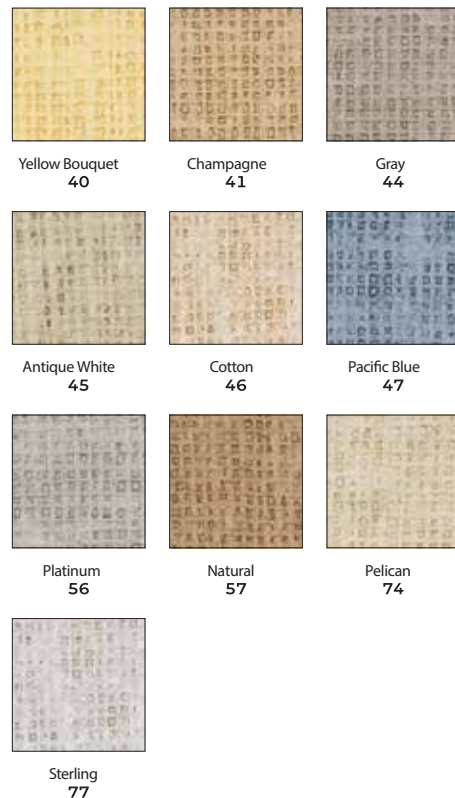


Get on board with durability and color.

Vinyl fabric over a tackable substrate for a board with long lasting appeal.



VINYL COLOR OPTIONS:



VINYL ADD-CORK TACKBOARD – ALUMINUM TRIM

- Fabric-backed vinyl over an Add-Cork substrate makes a durable and attractive tackboard.
- Easy to clean surface. Vinyl is treated to resist the growth of odor- and stain-causing microbes.
- Add-Cork consists of 1/8" layer of natural cork bonded to 3/8" layer of rigid and durable substrate for added tack-holding power and durability.
- Featured with standard 7/8" clear anodized aluminum trim with hairline mitered corners. Anodized black aluminum trim available at an upcharge.
- Manufactured in the US of foreign and domestic materials. Ten year limited warranty. Has achieved GREENGUARD GOLD Certification.

VINYL TECHNICAL INFORMATION

- Vinyl tackboards are fade-resistant and are easily cleaned with common detergents and water.
- The vinyl covering meets or exceeds all requirements of Federal Specifications CCCW-408A Quality Standard for Vinyl Coated Fabric Wallcovering CFFA-W-101A, and the Standard Classification of Wallcoverings by Durability Characteristics of ASTM-F-793-82 for the type and category classified, including 24 hour cleanability tests based on ASTM method D1308.
- The vinyl is treated with an antimicrobial to resist the growth of mildew and bacteria.
- Custom sizes are available.

Part No.	Dimensions	Ship Wt.
312AB*	2'H x 3'W	12 lbs
312AC**	3'H x 4'W	20 lbs
312AD	4'H x 4'W	39 lbs
312AF	4'H x 5'W	46 lbs

Part No.	Dimensions	Ship Wt.
312AG	4'H x 6'W	49 lbs
312AH	4'H x 8'W	64 lbs
312AK	4'H x 10'W	71 lbs
312AM	4'H x 12'W	104 lbs

*Ships UPS **Ships UPS with large package surcharge or additional handling fee. Shipping weights are listed on a per item basis and may vary based on quantities ordered. All boards listed as 3'H x 4'W actually measure 33.8"H x 48"W due to shipping restrictions.