

PRODUCT BULLETIN

CYCLO TOOLMAKERS, INC. VIBRATION ELIMINATION SYSTEM (VES)



Your Cyclo Polisher has been updated with the advanced Vibration Elimination System (VES). VES is available exclusively on Cyclo Dual Head Orbital Polishers and is composed of a completely redesigned counterweight and precision matched weighted inserts.

The Cyclo VES allows operators to customize the polisher counterweight configuration. By simply matching the correct VES weighted insert to the intended attachment system configuration – head assemblies with rubber pad holders or bonnets, carpet and scrub brushes, quick connect adapters with DoublePrecision™ pads, or other Genuine Cyclo attachments – you can nearly eliminate all vibration.

CONFIGURING YOUR VES COUNTER WEIGHT ON YOUR CYCLO POLISHER:

Your polisher will have the VES counterweight system with the yellow weighted inserts installed. You will need to install the appropriate weighted insert. Then install whichever attachment you will be using: Heads with Rubber Pad Holders, DoublePrecision Adapters, Brushes or other attachment.

1. Lay the polisher with heads facing up on a bench or flat surface. You can use the cardboard insert from inside of the polisher box to support polisher/hold it in place.
2. Determine the attachment system configuration that you intend to use – head assemblies with rubber pad holders or bonnets, carpet and scrub brushes, quick connect adapters with DoublePrecision™ pads, or other Genuine Cyclo attachments.
3. Select the appropriate VES weighted insert from the "TABLE 1: ADJUSTABLE COUNTERWEIGHT APPLICATION TABLE" below.
4. Thread the weighted insert into the counterweight and hand tighten using a 7/32" hex wrench (included).
5. **IMPORTANT!** Tighten VES weighted insert firmly by attaching the 5/8" flat wrench to the counterweight's threaded nut style adapter and turn counterclockwise until you make contact with the 7/32" hex wrench. Use the 5/8" flat wrench pivoting on hex wrench to prevent counterweight from turning while tightening the weighted insert. See photos below. Turn the 7/32" hex wrench clockwise to tighten VES weighted insert firmly, but not too tight.
6. Configuration complete. You may now install the attachment system you have chosen. Instructions for installation are included in your instruction manual.

TABLE 1: ADJUSTABLE COUNTERWEIGHT APPLICATION TABLE

WEIGHTED INSERT	PART NO.& DESCRIPTION	APPLICATION
 <p>Front View Profile View</p>	<p>20-076 18.75g WEIGHT, SILVER, 1 STRIPE</p>	<p>DOUBLEPRECISION ADAPTER AND PADS CARPET AND SCRUB BRUSHES</p>
 <p>Front View Profile View</p>	<p>20-078 32.0g WEIGHT, YELLOW WITH 2 STRIPES</p>	<p>HEAD ASSEMBLY WITH BONNETS OR RUBBER PAD HOLDER WITH PADS</p>

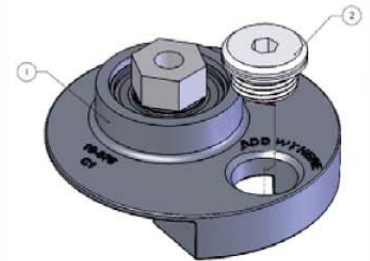


Illustration of new VES counterweight (1) and VES weighted insert (2).

IMAGES OF INSTALLATION:



Step 1

Step 2

Step 4

Step 5

WHY LOW VIBRATION IS IMPORTANT:

It has been proven that operators face significant risk of muscle, joint and nerve damage caused by the inherent vibration of power tools. By reducing the amount of vibration you can reduce muscle and joint fatigue as well as the potential risk for permanent damage, as described in ISO 5349-1:2001. Mechanical vibration -- Measurement and evaluation of human exposure to hand-transmitted vibration.