



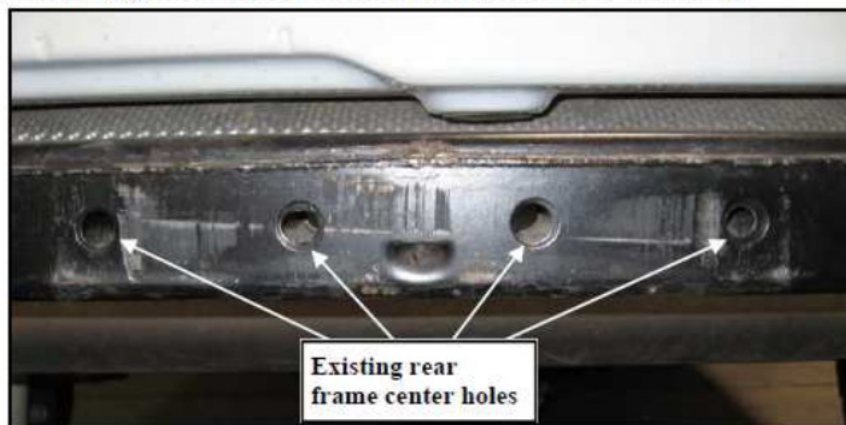
Installation Instructions:
 XRC & SRC (76856,76622) Rear
 Bumper with Tire Carrier.
 07-10 Jeep JK (Wrangler/Unlimited)

Note: Carefully read entire instructions thoroughly before attempting to install this product.

Parts Included	Qty		
BOX 1			
91-5441 REAR BUMPER	1	90-6689 HARDWARE PACK: HANDLE	1
91-5433 TIRE CARRIER: ADJUSTABLE MOUNT	1	90-2940 NYLON WASHER	2
90-3925 NUT PLATE	2	90-4218 CIRCLE CILP	1
90-6581 HARDWARE PACK: BUMPER	1	90-4219 LUG NUTS	3
1/2"-13 X 4 1/2" GR. 8 HEX BOLT	4	90-4217 ZERK FITTING	1
1/2"-13 X 1 1/4" GR. 8 HEX BOLT	4	90-4214 TIRE CARRIER HANDLE ASSEMBLY	1
1/2" USS FLAT WASHER	8	90-6690 HARDWARE PACK: TIRE CARRIER	1
1/2" SAE WASHER	4	3/8"-16 X 1 1/4" HEX BOLT GR. 8	2
1/2" HEX NUT	4	3/8"-16 X 1 3/4" HEX BOLT GR. 8	2
BOX 2		3/8"-16 X 2 1/2" HEX BOLT GR. 8	2
91-5439 TIRE CARRIER: XRC	1	3/8"-16 STOVER NUT	6
91-5436 SRC SPARE TIRE CARRIER BRACE	1	3/8" SAE FLAT WASHER	8
		1/2"-13 STOVER NUT	4
		1/2"-13 FLAT WASHER	4
		5/16"-18 X 3/4" SS BUTTONHEAD BOLT -Not Used	1

Step 1: Remove the factory rear bumper and hardware from the vehicle.

Step 2: Drill out the (4) holes in the center of the frame to 1/2". (Fig A)



(Fig A)

For Technical Support/Warranty Information please call 310-762-9944

Smittybilt, 400 West Artesia Blvd, Compton, CA 90220



Installation Instructions:
 XRC & SRC (76856,76622) Rear
 Bumper with Tire Carrier.
 07-10 Jeep JK (Wrangler/Unlimited)

Step 3: Insert nut plate (90-3925) into the inside of the rear frame rails. (Fig B)



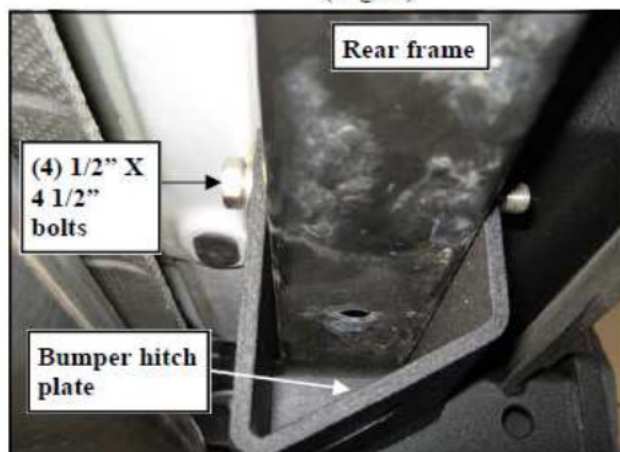
(Fig B)

Step 4: *NOTE: This step might require 2 people.* Raise the new SRC rear bumper (91-5441) up into place and align the (4) holes on the frame with the holes on the hitch plate on the bumper. (Fig C)

(Fig C)



(Fig D)



Step 5: Install the 1/2" X 4 1/2" hex bolts to secure the hitch plate to the rear frame. Do not tighten bolts at this time. (Fig D)

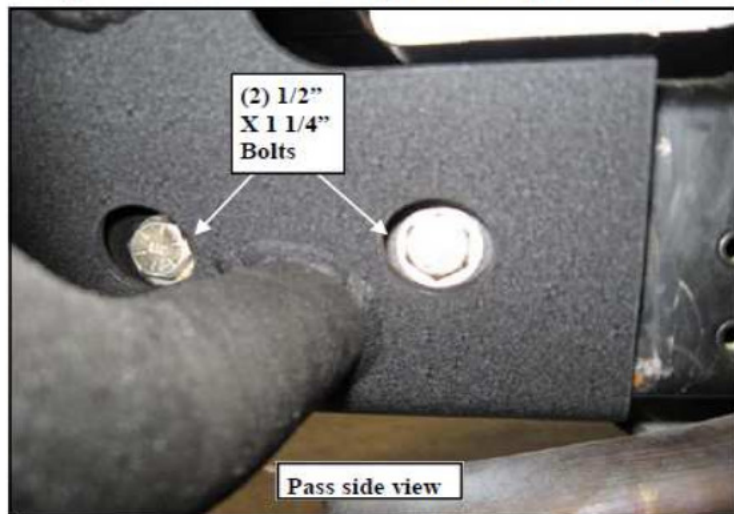
For Technical Support/Warranty Information please call 310-762-9944

Smittybilt, 400 West Artesia Blvd, Compton, CA 90220



Installation Instructions:
 XRC & SRC (76856,76622) Rear
 Bumper with Tire Carrier.
 07-10 Jeep JK (Wrangler/Unlimited)

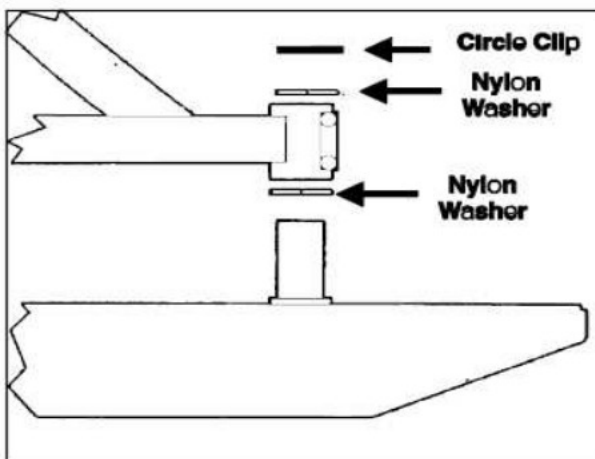
Step 6: Install the (4) $\frac{1}{2}$ " X $1\frac{1}{4}$ " into the previously installed nut plates (90-3925), (2) on the driver's side, (2) on the pass side. Level the bumper and torque the bolts to 90 ft./lbs. (Fig E)



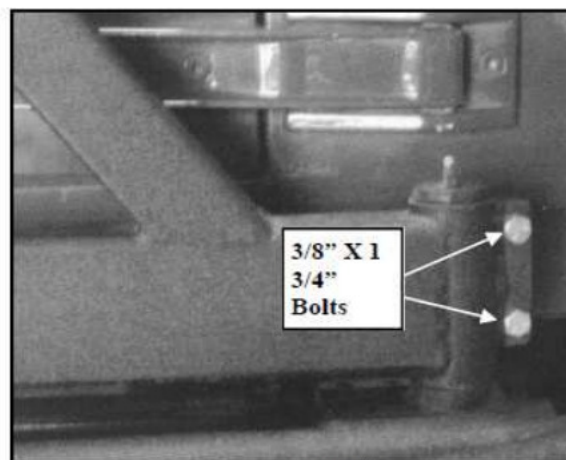
(Fig E)

Step 7: Torque the (4) hitch plate bolts to 90 ft./lbs. (Fig D)

Step 8: Place nylon washer over rear bumper post, then place tire carrier on top, then another nylon washer. Once the tire carrier has been placed over post, swing it to the closed position and latch it into place. Secure it with the already installed bolts (No Washers). (Fig F and G) **IMPORTANT!:** Over-tightening the pinch bolts will not allow the tire carrier to swing freely.



(Fig F)



(Fig G)

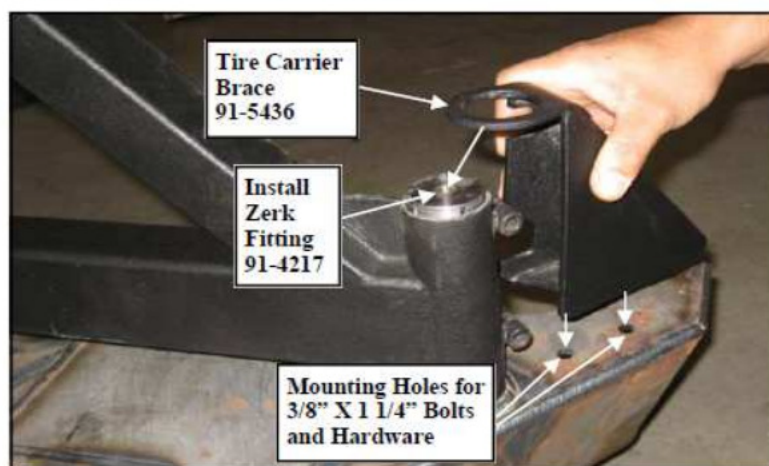
For Technical Support/Warranty Information please call 310-762-9944

Smittybilt, 400 West Artesia Blvd, Compton, CA 90220



Installation Instructions:
 XRC & SRC (76856,76622) Rear
 Bumper with Tire Carrier.
 07-10 Jeep JK (Wrangler/Unlimited)

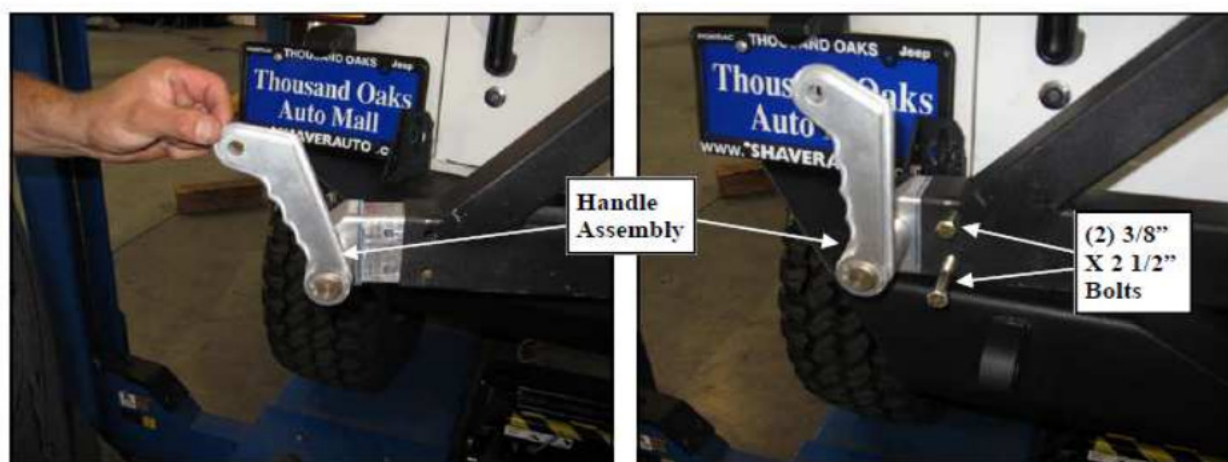
Step 9: Install the tire carrier brace (91-5436) over the tire carrier spud and secure to the holes in the bumper using the supplied 3/8" X 1 1/4" bolts, washers and hardware. (Fig H)



(Fig H)

Step 10: Carefully place the circle clip on top of the post over the tire carrier portion. Install the Zerk fitting (90-4217) into the bumper post. Do not over tighten.

Step 11: Install the handle assembly into the end of the tire carrier. Close and latch the tire carrier. Secure using the supplied 2" X 1/2" bolts and hardware. (Fig I)



(Fig I)

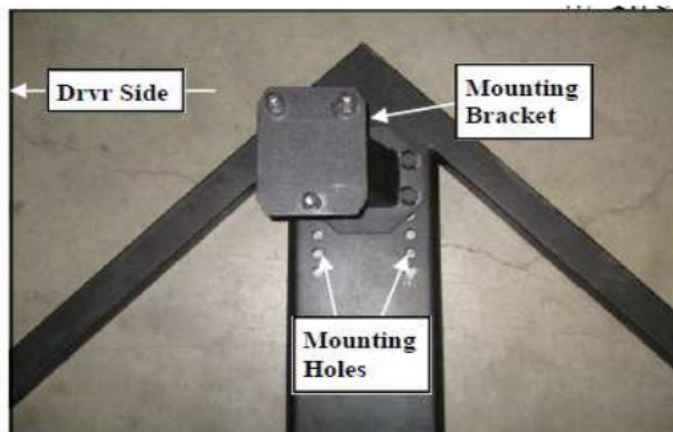
Step 12: Locate tire mounting bracket on the tire carrier by guiding the bracket studs into the holes on the tire carrier. *NOTE: the bracket will be offset towards the driver side.* Secure using the supplied (4) 3/8" Flat Washers, (4) Lock Nuts. Determine the best position for your tire size and then tighten all hardware on mounting bracket. For best results the back side of the tire should rest against the (Triangle) tire carrier. (Fig J)

For Technical Support/Warranty Information please call 310-762-9944

Smittybilt, 400 West Artesia Blvd, Compton, CA 90220



Installation Instructions:
 XRC & SRC (76856,76622) Rear
 Bumper with Tire Carrier.
 07-10 Jeep JK (Wrangler/Unlimited)



(Fig J)



(Fig K)

Step 13: Reattach any previously unclipped wiring harnesses.

Step 14: Installation is now complete.

Product cleaning and maintenance instructions

Stainless Steel Finish – Aluminum polish may be used to polish small scratches and scuffs on the finish. Mild soap, window or glass cleaner may be used to clean the finish. **Dual state powder coat finish** – Mild soap, window or glass cleaner may be used to clean the finish. In order to protect the finish, you may wax your product on a regular basis with pure carnauba automotive wax. Do not use any types of soap, polish or wax that contains abrasive that could damage the finish. **Textured coated finishes** should be cleaned with a mild soap on a damp sponge. Do not apply polish or wax that requires to be removed by means of buffing. This type of wax is commonly used at car wash facilities. **Chrome Finish** – Mild soap, window or glass cleaner may be used to clean the finish. In order to protect the finish you should wax your product on a regular basis with pure carnauba automotive wax. Do not use any types of soap, polish or wax that contains abrasive that could damage the finish.

For Technical Support/Warranty Information please call 310-762-9944

Smittybilt, 400 West Artesia Blvd, Compton, CA 90220



Installation Instructions:
 XRC & SRC (76856,76622) Rear
 Bumper with Tire Carrier.
 07-10 Jeep JK (Wrangler/Unlimited)

REVISION III

NOTE: Carefully read entire instructions thoroughly before attempting to install this part.

Parts Included	Qty
91-5567 3rd Brake Light Bracket: Upper	1
91-5569 3rd Brake Light Bracket: Lower	1
90-6299 Hardware Pack: 3rd Brake Light Bracket	1
5/16" X 1" Gr. 8 Hex Bolt	2
5/16" SAE Flat Washer	2
5/16" Nylock Nut	4
3/8" X 1" Hex Head Self Tapping Bolt	2

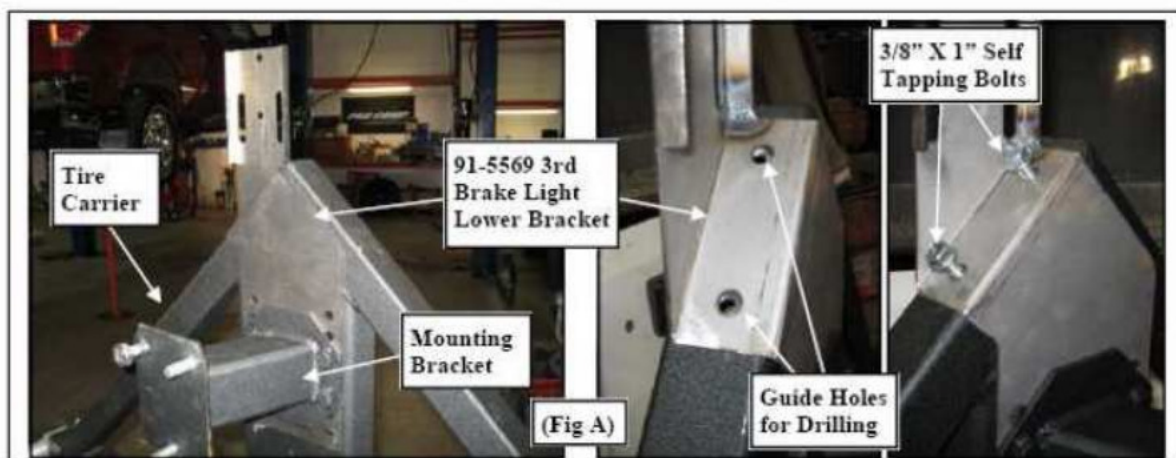
INSTALLATION:

Step 1: Remove the (4) OE retaining screws on the back of the 3rd brake light housing. Save the hardware for reinstallation.

Step 2: Unclip the wiring harness on the 3rd brake light housing and remove it from the bumper.

Step 3: Install the 3rd brake light lower bracket (91-5569) to the tire carrier under the spare tire mounting bracket. Secure using the mounting bracket stud hardware. (Fig A)

NOTE: The jog in the lower bracket will rest on the sloped side of the tire carrier.



For Technical Support/Warranty Information please call 310-762-9944

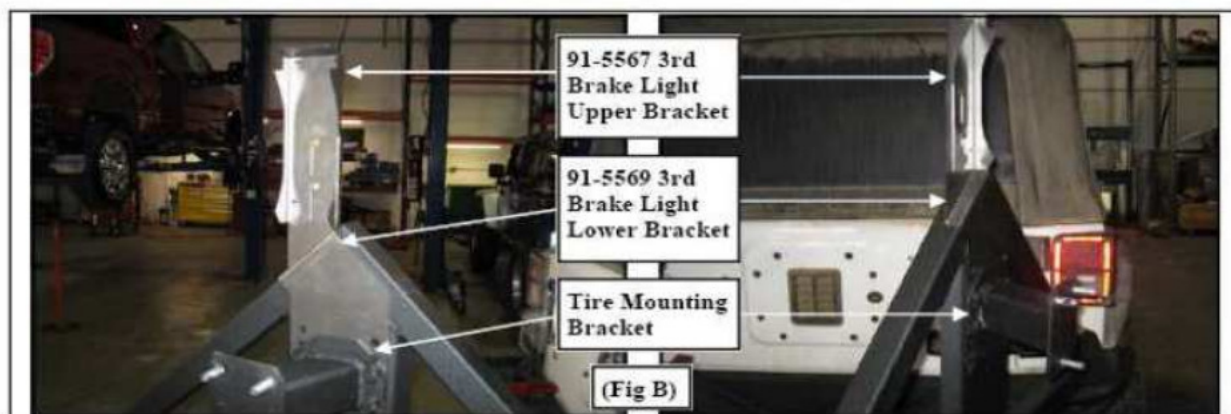
Smittybilt, 400 West Artesia Blvd, Compton, CA 90220



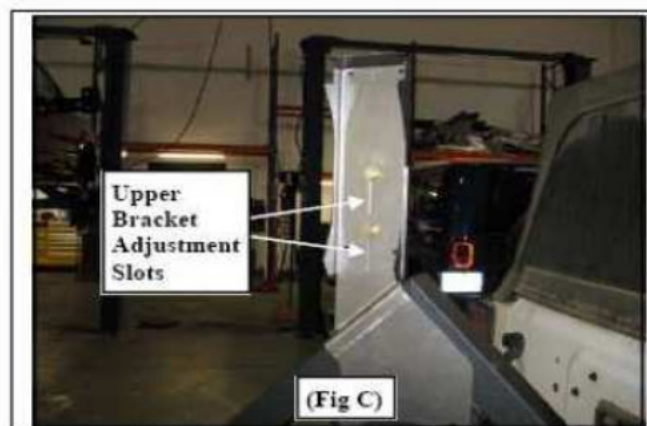
Installation Instructions:
 XRC & SRC (76856,76622) Rear
 Bumper with Tire Carrier.
 07-10 Jeep JK (Wrangler/Unlimited)

Step 4: Clamp the 3rd brake light lower bracket firmly against the tire carrier. Use the holes in the sloped portion of the 3rd brake light lower bracket as a template to drill the (2) upper mounting holes. Center punch and drill the (2) holes in the tire carrier using a 5/16" drill bit. Secure the 3rd brake light lower bracket using the supplied 3/8 X 1" self tapping bolts. (Fig A)

Step 5: Install the 3rd brake light upper bracket (91-5567) to the lower bracket (91-5569). Secure using the supplied 5/16" X 1" bolts and hardware into the slots. Leave the bolts hand tight only. (Fig B)



Step 6: Place the spare tire onto the tire carrier mounting bracket. Adjust the 3rd brake light upper bracket (91-5567) to clear the spare tire. (Fig C)



For Technical Support/Warranty Information please call 310-762-9944

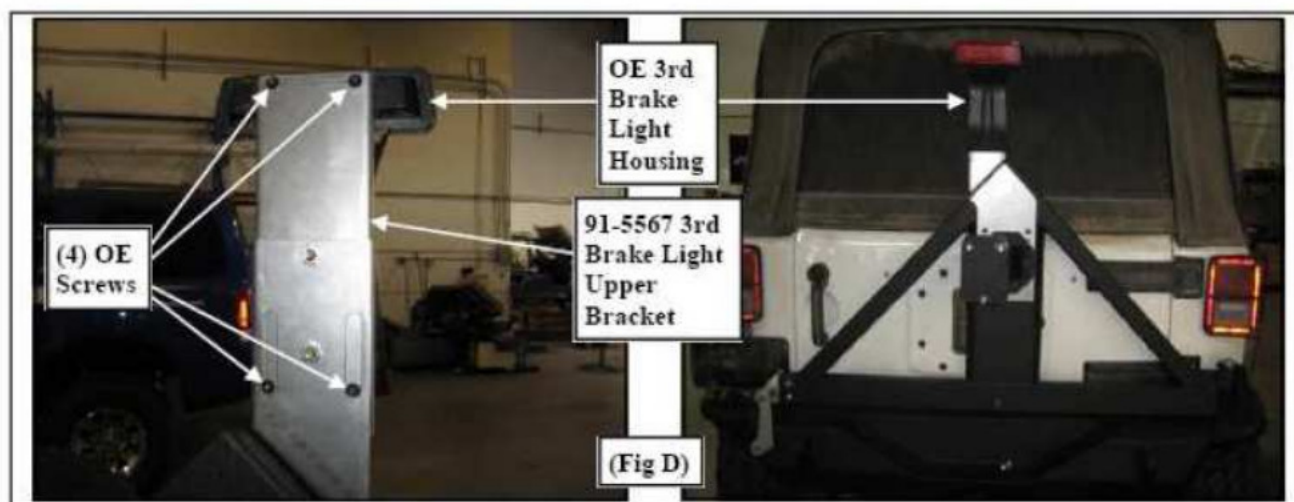
Smittybilt, 400 West Artesia Blvd, Compton, CA 90220



Installation Instructions:
XRC & SRC (76856,76622) Rear
Bumper with Tire Carrier.
07-10 Jeep JK (Wrangler/Unlimited)

Step 7: Remove the spare tire from the tire carrier mounting bracket. Tighten the 5/16" X 1" bolts and hardware to 15 ft./lbs.

Step 8: Install the 3rd brake light to the upper bracket (91-5567) using the previously removed (4) OE bolts. (Fig D)



Step 9: Reattach the third brake light wiring harness you previously removed.

NOTE: It is recommended to extend the 3rd brake light wiring harness. This can simply be done by splicing the wire and using some insulated butt splice connectors and 18 guage wire, extend the wire to the appropriate length. It is recommended to have this done by an experienced electrical installer.

Step 10: Installation is now complete.

For Technical Support/Warranty Information please call 310-762-9944

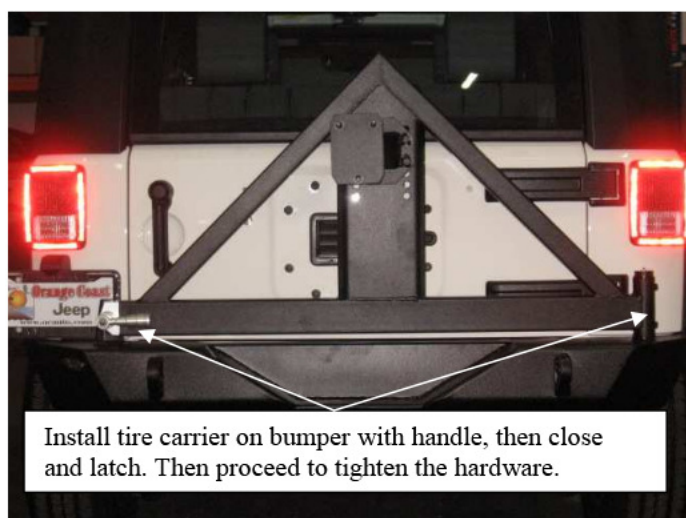
Smittybilt, 400 West Artesia Blvd, Compton, CA 90220



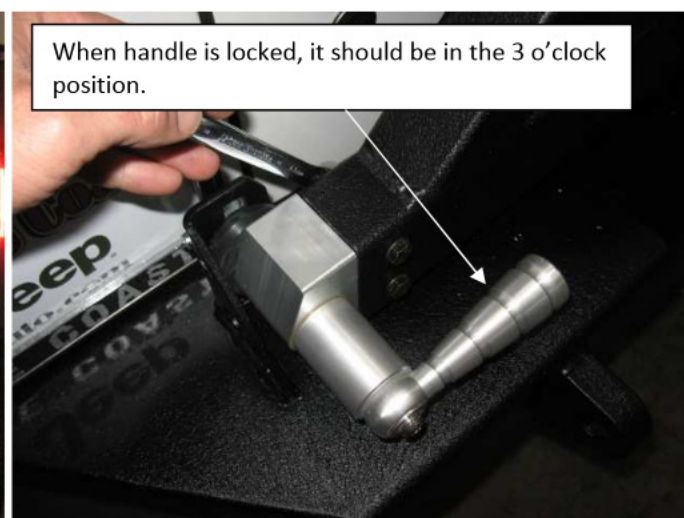
Installation Instructions:
 XRC & SRC (76856,76622) Rear
 Bumper with Tire Carrier.
 07-10 Jeep JK (Wrangler/Unlimited)

The following can be used to help solve any issues that you may have with your tire carrier. Please read entirely before making any adjustments.

1. After the bumper is installed, follow the installation instructions for the tire carrier included with it. Make sure to close and latch the tire carrier first with no load before tightening any of the hardware. (Fig A,B)



(Fig A)

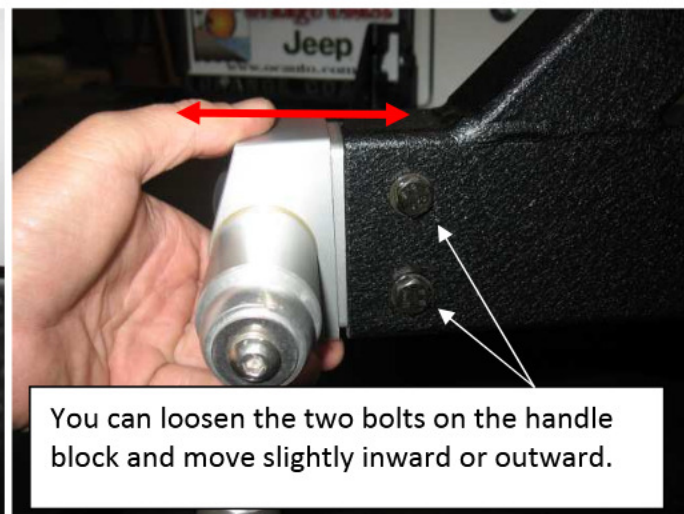


(Fig B)

2. If the lock pin on the back of your handle does not go into the keyhole on the latch bracket easily (horizontally) you can loosen the two bolts on the handle block and move slightly inward or outward. (Fig C,D)



(Fig C)



(Fig D)

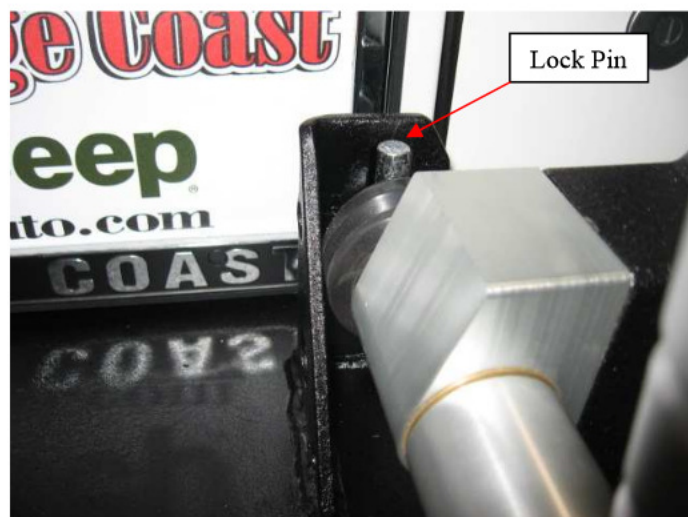
For Technical Support/Warranty Information please call 310-762-9944

Smittybilt, 400 West Artesia Blvd, Compton, CA 90220

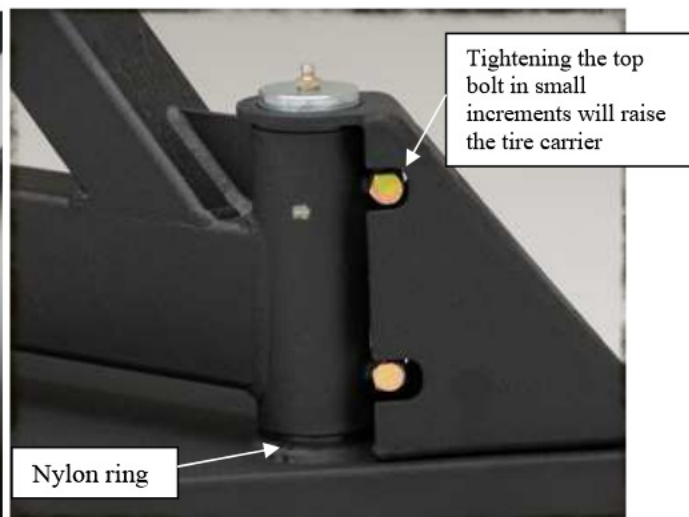


Installation Instructions:
 XRC & SRC (76856,76622) Rear
 Bumper with Tire Carrier.
 07-10 Jeep JK (Wrangler/Unlimited)

3. If the lock pin on the back of your handle is too low or too high, this can be adjusted by loosening or tightening the two end mounting bolts of the tire carrier. (Fig E,F) These two bolts provide a lot of adjustment. This needs to be done in small increments, a $\frac{1}{4}$ turn can accomplish a lot. It is easier to have assistance while doing this, so you can have someone watching the latch while someone does the wrenching. This should be done with the tire carrier slightly open.



(Fig E)



(Fig F)

4. After you have made all the necessary adjustments proceed to mount your tire. Depending on the size and weight you may need to go through these steps again.

- A. Make sure you have a nylon ring installed on the bumper post before you slide the tire carrier on.
- B. When handle is locked, it should be in the 3 o'clock position. (Fig A) If for some reason it is not, you can rotate the handle simply by removing the allen head bolt, remove the handle and turn it.
- C. Make sure to grease the tire carrier regularly.
- D. In some instances the post bolts may be flush with the stover nut and/or some up to a $\frac{1}{4}$ " past.

NOTE: There are two styles of handles included. You can use either version. To replace; simply remove the allen head bolt on the end of the handle, slide current handle off and then slide the preferred handle on and tighten bolt.

NOTE: Included hardware may be Metric , but the sizes are coordinated to the standard hardware kits/sizes listed.

For Technical Support/Warranty Information please call 310-762-9944

Smittybilt, 400 West Artesia Blvd, Compton, CA 90220



Installation Instructions:
XRC & SRC (76856,76622) Rear
Bumper with Tire Carrier.
07-10 Jeep JK (Wrangler/Unlimited)

Limited Warranties

Smittybilt's products are covered under the following limited warranties only. Note that the duration of the limited warranty differs according to the material and finish of the product purchased. Subject to the duration and conditions of the limited warranty stated below, Smittybilt warrants to the original retail purchaser that its products are free from defects in material and workmanship. All other warranties and representations express or implied, are hereby disclaimed, including fitness for merchantability and buyer's intended use or purpose. All parts are sold "AS IS" except for the limited warranties granted herein. Buyer assumes all risks as to the selection, suitability and performance of all goods and products selected. This limited warranty does not cover damage or impairment in any part due to misuse, improper installation, accident or contact with on-road or off-road hazards, product modification, improper or inadequate cleaning and/or maintenance. Smittybilt is not responsible for items damaged during shipping. This warranty is not transferable from the original buyer. For the original Buyer to be eligible for the limited warranty coverage, the Buyer must provide proof of purchase. Smittybilt strongly recommends returning the warranty registration card.

Customer's remedy hereunder shall be limited only to repair or replacement (at Smittybilt's option) of any defective part(s) returned to Smittybilt at customer's expense. The determination of whether or not a returned part is defective or subject to coverage under the limited warranties stated herein shall be made at Smittybilt's sole discretion.

Duration of Limited Warranty

Limited Lifetime Warranty on Stainless Steel Products -

Smittybilt stainless steel products carry the foregoing limited repair or replacement warranty against workmanship and defects in the material so long as the original purchaser retains the original stainless steel parts.

Limited Five (5) Year / 50,000 Mile Pro-Rata Warranty (whichever occurs first) on Dual-Stage Powder Coating Products -

Smittybilt dual-stage powder coated products carry the foregoing limited repair or replacement warranty for a period of (5) years or 50,000 miles (whichever occurs first) from date of purchase against workmanship and defects in the material, provided that any claim submitted after (2.5) years from date of purchase shall, if accepted, be satisfied by Smittybilt offering customer a credit on the purchase of a replacement product equal to fifty percent (50%) of customer's initial purchase price.

To assure product quality, Smittybilt reserves the right to change product design, material, specification and finishes without prior notice to customers. This limited warranty gives you specific legal rights and you may also have other rights, which may vary from state to state. Some states do not allow limitations on how long an implied warranty lasts, so the above limitations may not apply as to you. Also, some states do not allow the exclusion or limitation of incidental or consequential damages, so the above limitations or exclusions may not apply to you. Smittybilt reserves the right to discontinue product lines and substitute products, or provide other remedies than those listed in this limited warranty for those discontinued products.

For Technical Support/Warranty Information please call 310-762-9944

Smittybilt, 400 West Artesia Blvd, Compton, CA 90220



Installation Instructions:
XRC & SRC (76856,76622) Rear
Bumper with Tire Carrier.
07-10 Jeep JK (Wrangler/Unlimited)

For Technical Support/Warranty Information please call 310-762-9944

Smittybilt, 400 West Artesia Blvd, Compton, CA 90220