

Web Smart Managed Fiber Ethernet Switch FSW-3208M & FSW-3224M



Gigabit Layer 2 Switch

FSW-3208M/ FSW-3224M is a high performance web-smart switch that provides up to 8 or 24 10/100/1000Mbps copper Ethernet ports and 2 SFP Dual Media, this provides a great flexibility for nowadays variety of network application at lower cost, specially an unique function is also designed with these two ports (SFP), it can be used as switch port with SFP interface, moreover, it can also be configured as converter, then each paired ports can be used as RJ-45 to Fiber converter at Gigabit speed, this will greatly save converter cost at some application that don't need to switch packets in networks, such as FTTH (Fiber To The Home), FTTB, fiber connection,...etc. FSW-3208M/ FSW-3224M also provides users with common and simple control/setting function rather than sophisticated SNMP management function on every Ethernet ports through out-of-band Ethernet; this makes it very suitable for small or medium size company to build up simple network at beginning phase with lower cost. Moreover, an optional long-ear accessory also makes it possible to play as a backbone in the rack mount environment. A user friendly, mouse operation, web management is supported through browser; this provides you enjoy major control function same as SNMP switch but at smart cost. An out-of-band Ethernet port is supported for initial setup and out-of-band control, this out-of-band Ethernet can provide an independent control channel separated from malfunction network and provide management from both local and remote side as well.

Specially, an in-band control is also provided if user connects out-of-band port to one of 8 or 24 Ethernet ports, then in-band management can be performed, this give user a great flexibility to manage the device either through in-band or out-of-band. Non-blocking and maximum wire speed performance are designed on all switched ports, it not only supports Auto-Negotiation but also AUTO-MDIX function on all switched 8 or 24 10/100/1000 RJ-45 Gigabit copper ports no matter running with half or full duplex mode, these function make user easy to use and reduce the matching effort between straight and cross-over line issues. FSW-3208M/ FSW-3224M supports both port-based VLAN and Tag-based VLAN to catch-up the application needed in coming VLAN age. To increase bandwidth application, it supports 1 group with up to 4 ports Trunk, and moreover, these trunk ports are with fair-over function to provide redundant back-up when one or some of ports are malfunction. Totally front access design and fully LED status display ease user's installation, a reset bottom is also provided makes user easy to go back to default setting.

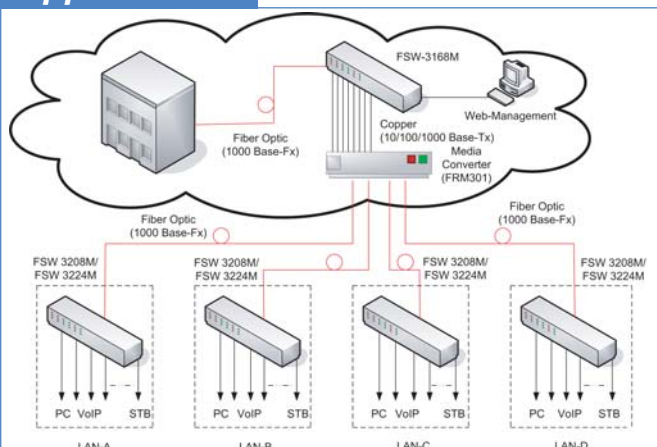
Features

- 8/24 ports 10/100/1000 RJ-45 (FSW-3208M/ FSW-3224M)
- Auto-Negotiation and Auto-MDIX on all 10/100/1000M copper ports
- MAC based Trunk with fail over
- Non-blocking, full-line speed, store-and-forward
- Port, Weighted Priority, and 802.1q-based QoS for four Queues
- Rack mount is optional with long ear
- Support broadcast storm prevention
- Support flow control for both half- or full-duplex operation
- Support jumbo frame, Max. packet length 9728 byte
- Support port based VLAN and 802.1q Tag VLAN
- Support rate limit control (ingress/ egress)

Specifications

Standard	IEEE 802.3 10BaseT Ethernet; IEEE 802.3u 100BaseTX Fast Ethernet; IEEE 802.3z 1000BaseSX/LX Gigabit Ethernet; IEEE 802.3x flow control; IEEE 802.1q Tag-based VLAN, Priority Control; IEEE 802.1v protocol-based VLAN	
Throughput	1000Mbps ethernet	1488100 packets per second per port
	100Mbps ethernet	148810 packets per second per port
	10Mbps ethernet	14880 packets per second per port
LEDs	Link, Activity, Speed	
Power	100 — 240 VAC ±10%; Frequency: 50 — 60 Hz	
Environment	Temperature	0 — 60°C (Operating) ; 20 — 70°C (Storage)
	Humidity	5% — 90% non-condensing
Power Consumption	FSW-3208M	20W
	FSW-3224M	40W
Dimensions(WxDxH)	FSW-3208M	252mm x 125mm x 44mm
	FSW-3224M	440mm x 184mm x 44mm
Weight	FSW-3208M	1.3Kg
	FSW-3224M	2.5Kg
Compliance	Class A FCC, CE, VCCI, C-Tick	

Application



Ordering Info

FSW-3208M	8-ports 10/100/1000Mbps copper ethernet and 2 SFP ports
FSW-3224M	24-ports 10/100/1000Mbps copper ethernet and 2 SFP ports