



Using Earthmate® Blue Logger™ GPS to Log an Outdoor Adventure

Written by
Kim Arsenault

Overview

Earthmate Blue Logger GPS is an affordable, compact, GPS solution that can help you:

- Track your position in real time as you travel (with a compatible DeLorme mapping application on a handheld or laptop computer)—this option is helpful when traveling in a car.
- Log points that can be imported into a compatible DeLorme mapping application later—this option is helpful when it is not feasible to bring a handheld or laptop computer along on your journey.

Unlike when you are traveling in a car, when you are hiking, cross-country skiing, etc., you do not have a dashboard or a seat to place a laptop or handheld computer. However, you may still want to view where you traveled. By carrying the wireless Blue Logger GPS where it has a clear view of the sky (you can even put it in your pocket or in a backpack), you can log points while you are performing your outdoor activities.

Assigning Logging Preferences

Earthmate Blue Logger GPS includes Blue Logger Manager, a software utility that lets you customize your logging preferences and download the points as a variety of file types (such as draw, text, GPL, raw, XData database, Openspace Transfer file).

Unlike competitor's GPS devices, Blue Logger GPS has the ability to log standard data **or** raw data. In most cases, you will select to log points as standard data if you want to log points while moving. In addition, logging points as standard data provides the most file type options when downloading the points. However, if you have DeLorme's GPS PostPro™ 2.0 and want to post-process your points for higher accuracy, log the points as raw data.

If you do not have GPS PostPro 2.0 and want to log points while on an outdoor adventure, select to log the points as standard data. Because you will more than likely be traveling at the same pace throughout your travels and be more concerned with viewing the area you traveled and not the speed at which you traveled, it is not necessary to distinguish a speed preference. Simply select the Otherwise check box and select to log points within a short time frame (to ensure you log each point you travel).

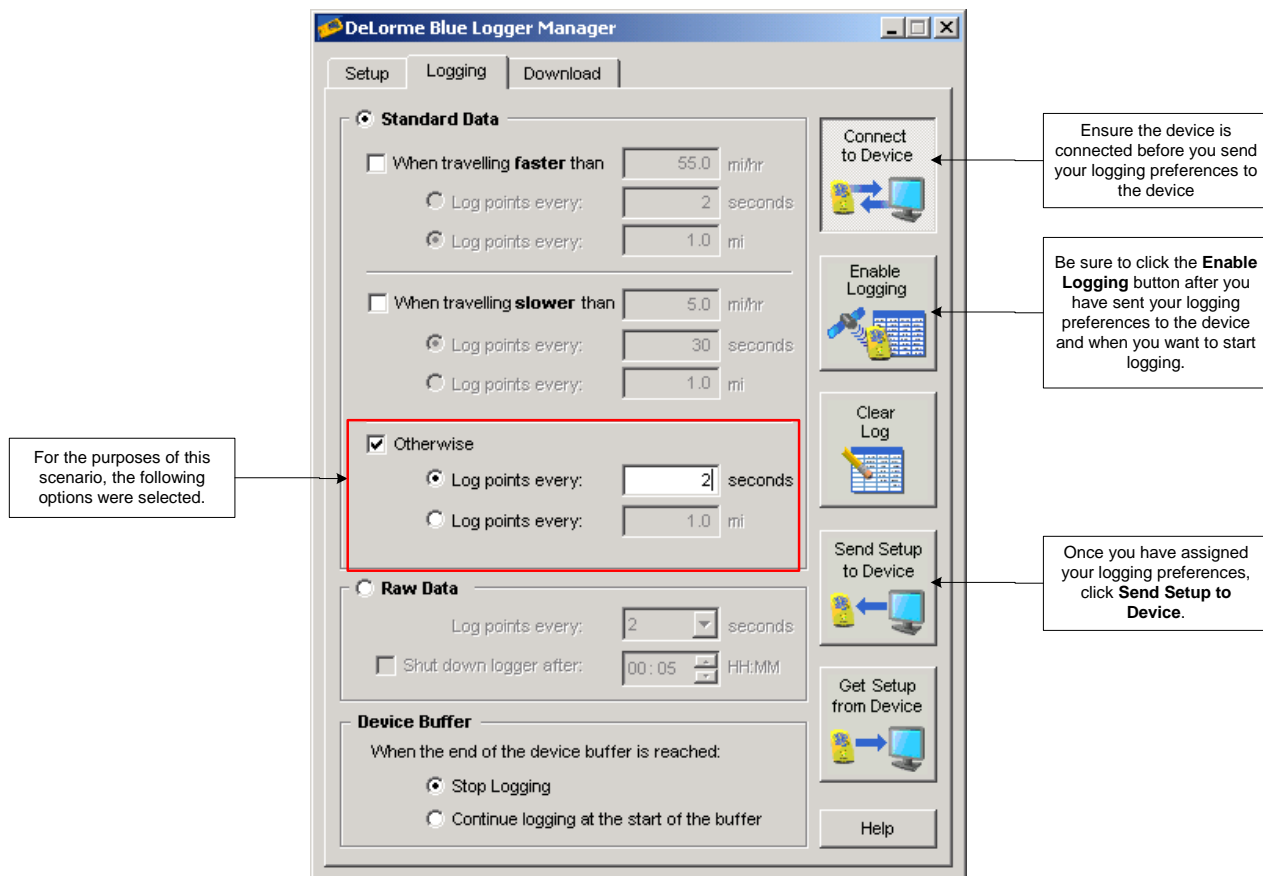


Figure 1: Assigning logging preferences with Blue Logger Manager.

Logging GPS Points

Before you begin your outdoor journey, be sure that:

- You sent your logging preferences to the device (in Blue Logger Manager).
- The Enable Logging button in Blue Logger Manager has been activated so the device can collect points.
- Earthmate Blue Logger GPS has a clear view of the sky at all times.

Downloading the GPS Points Collected During the Hike

When downloading standard data points, you can select to download all of the points on the device or selected points. If you only want to view the points that were obtained during your hike and you know you have other points on the device, selecting to download selected points is probably your best option. You can select to download the points based on time parameters (points logged between certain days and/or hours), speed parameters (this option is helpful when your logging preferences were based on *slower than* or *faster than* speeds), or within a given radius of a specific coordinate.

Once you have established the downloading criteria, there are several options for saving the downloaded points:

- **Draw File**—Lets you view the logged points as symbols on the map. The symbols are differentiated based on GPS status and the logging preferences (time, speed, and distance) that were assigned in the Logging tab.
- **Text File**—Lets you view the logging information in a .txt-compatible program such as Microsoft Excel, Word, Notepad, or WordPad. The file contains the date, time, latitude, longitude, elevation (in feet), heading, speed (mph), GPS status, and log type for each point that was logged.

- **GPL File**—Lets you view the points as a line on the map (using the Draw tab) or lets you play back the log in a compatible DeLorme application, labeling the points based on GPS status (using the GPS tab).
- **Openspace Transfer File**—Lets you view the logged points as symbols (indicating GPS status) on the map. Openspace Transfer Files can be imported into XMap/GIS and then classified, symbolized, and labeled to your specifications.
- **XData Database**—Lets you view the logged points as symbols on the map. The symbols are circles that represent GPS status.

If you selected to log your points as raw data, the Raw file type will be the only file type available when downloading.

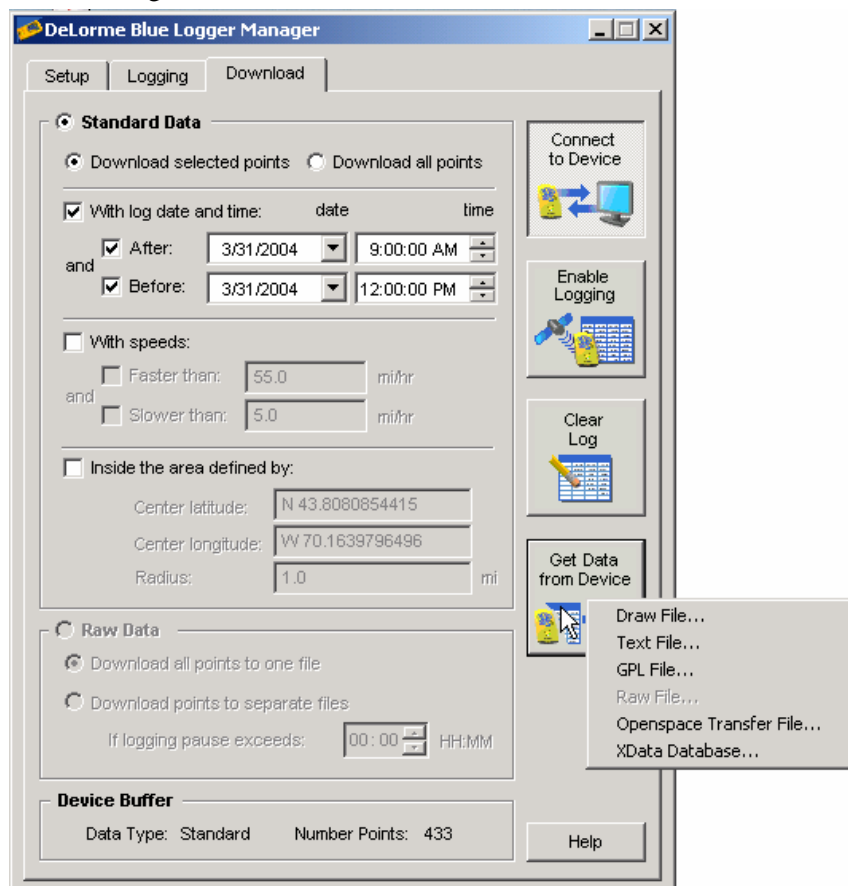


Figure 2: Using Blue Logger Manager to download standard data points.

Viewing the Logging Results

The process for viewing your logging results will depend on the format you selected to download your points and which DeLorme mapping application you are using to view the points. For more information on importing files, see the Help documentation for your DeLorme mapping application.

Note: Raw Data files cannot be directly imported into a DeLorme mapping application. In order to view raw data points in a compatible DeLorme mapping application, you must first use GPS PostPro 2.0 to post process the points.

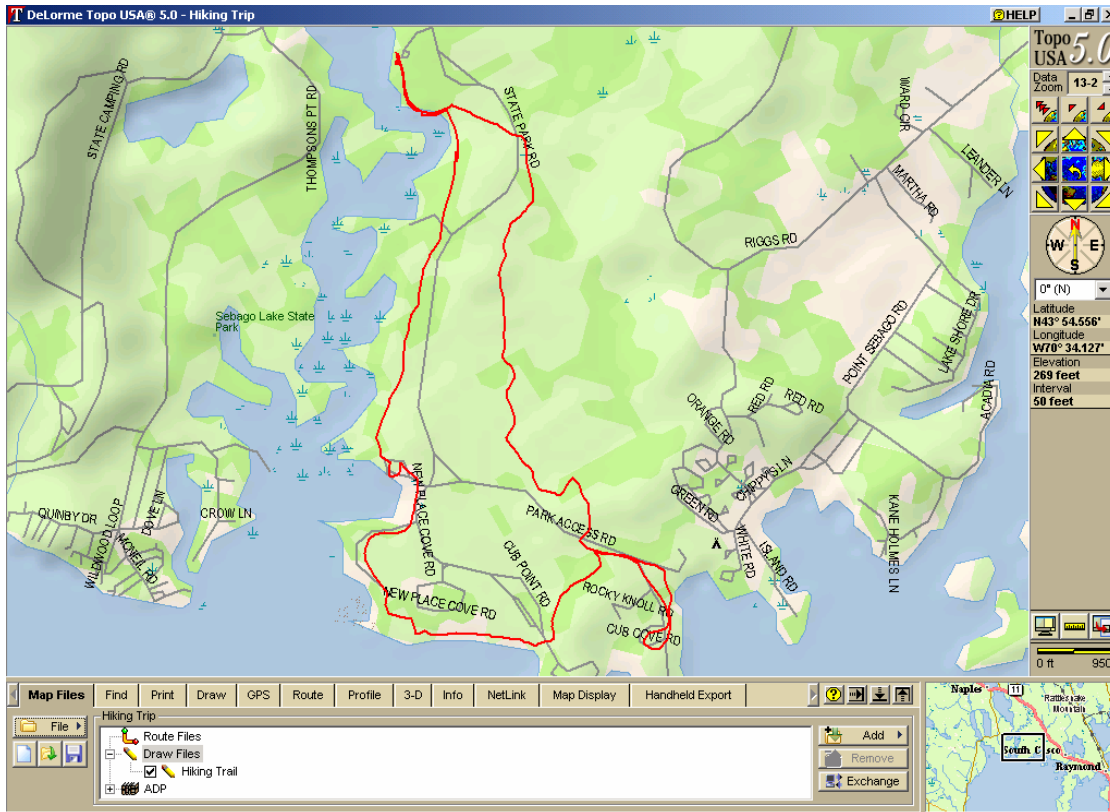


Figure 3: Viewing the logged points in Topo USA® 5.0. For this scenario, the points were downloaded as a Draw file using the Add button in the Map Files tab. The line was then customized using the line properties in the Draw tab.