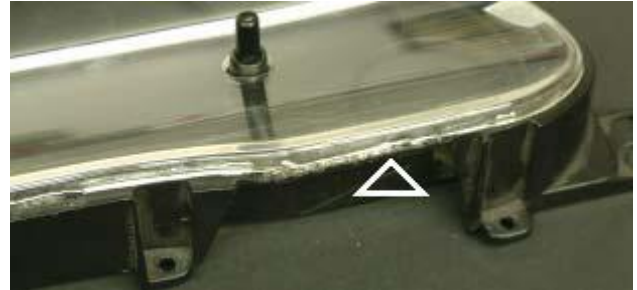


## 94-04 Mustang Dash Insert Installation Instructions



Remove the gauge cluster from the car.  
Remove the Black Bezel / Clear Plastic unit from the dash cluster



Using a Dremel tool or a hacksaw blade (just the blade) carefully cut between the clear plastic and the black bezel in the exposed areas.



Do Not Try to pry the clear lens off, it will only crack the plastic.



The separated pieces.



Once separated, peel the protective paper from the back side of the Dash Insert



Carefully align the Dash insert inside the gauge bezel.



Once installed, apply epoxy or clear silicone to the edges that were cut to re-fasten the clear plastic to the black bezel.



The finished installation. Re-install the gauge cluster into the dash.