

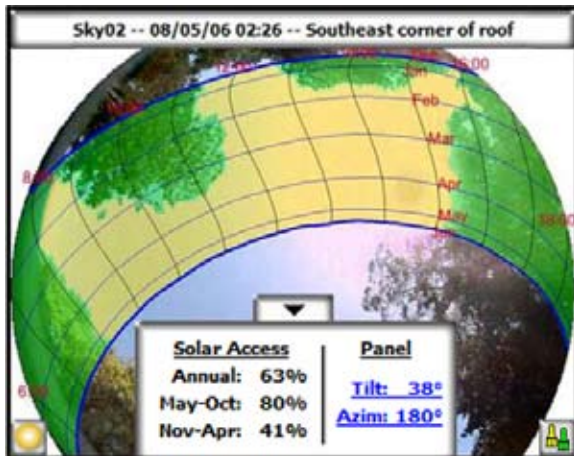
# Solmetric SunEye™

*Solar Access and Shading Information with the Touch of a Button*

## **On-Site Data Collection and Analysis:**

- Fish-eye lens and digital camera
- Sophisticated measurement software
- Simulates removal or addition of shading objects or structures
- Accounts for panel tilt and orientation
- Multi-skyline averaging

*All integrated in one hand-held tool with an easy-to-use touch-screen interface.*



## **That means:**

- Easy measurements and instant feedback
- Fast estimates lead to quick sales and designs
- Data is automatically stored for later review

*Generate shading reports and export data to solar design tools.*



***"The SunEye helps us streamline the whole design and rebate application process, and is a joy to use. I wouldn't live without it!"***

Matt Stone  
Energy Consultant, SPG Solar

THE RIGHT TOOL FOR SUN AND SHADE ANALYSIS

## Review data in easy-to-read formats

- Sunpath & skyline plots
- Bar charts and shading percentages
- Annual, monthly and multi-skyline average summaries

## User features

- Edit image to see the effect of adding or removing a tree or structure
- Adjust panel tilt and azimuth
- Extract obstruction elevation and azimuth angles



## Solmetric SunEye automatically

- Captures entire horizon
- Detects shading obstructions
- Plots sunpaths based on location
- Adjusts for magnetic declination
- Accounts for regional weather
- Calculates solar access
- Stores more than 100 site readings

## Transfer data to PC via USB

- Review, archive, and export data
- Automatically generate reports for quotes or rebate applications

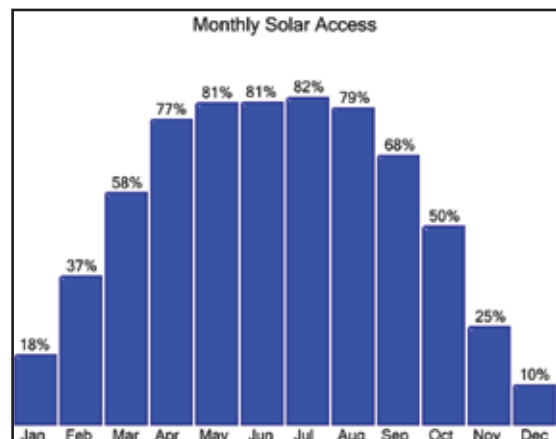
## GPS add-on:

- Automatically detects location for each skyline
- Compatible with new & existing SunEye units



## Additional SunEye accessories:

- Car Charger
- Hard Carrying Case



***"...the on-site analysis tool that the solar industry has been waiting for."***

Steve Heckerth  
Solar installation and BIPV expert

## For more information contact:

Solmetric Corporation  
Toll free: 1-877-263-5026  
[www.solmetric.com](http://www.solmetric.com) • [info@solmetric.com](mailto:info@solmetric.com)

