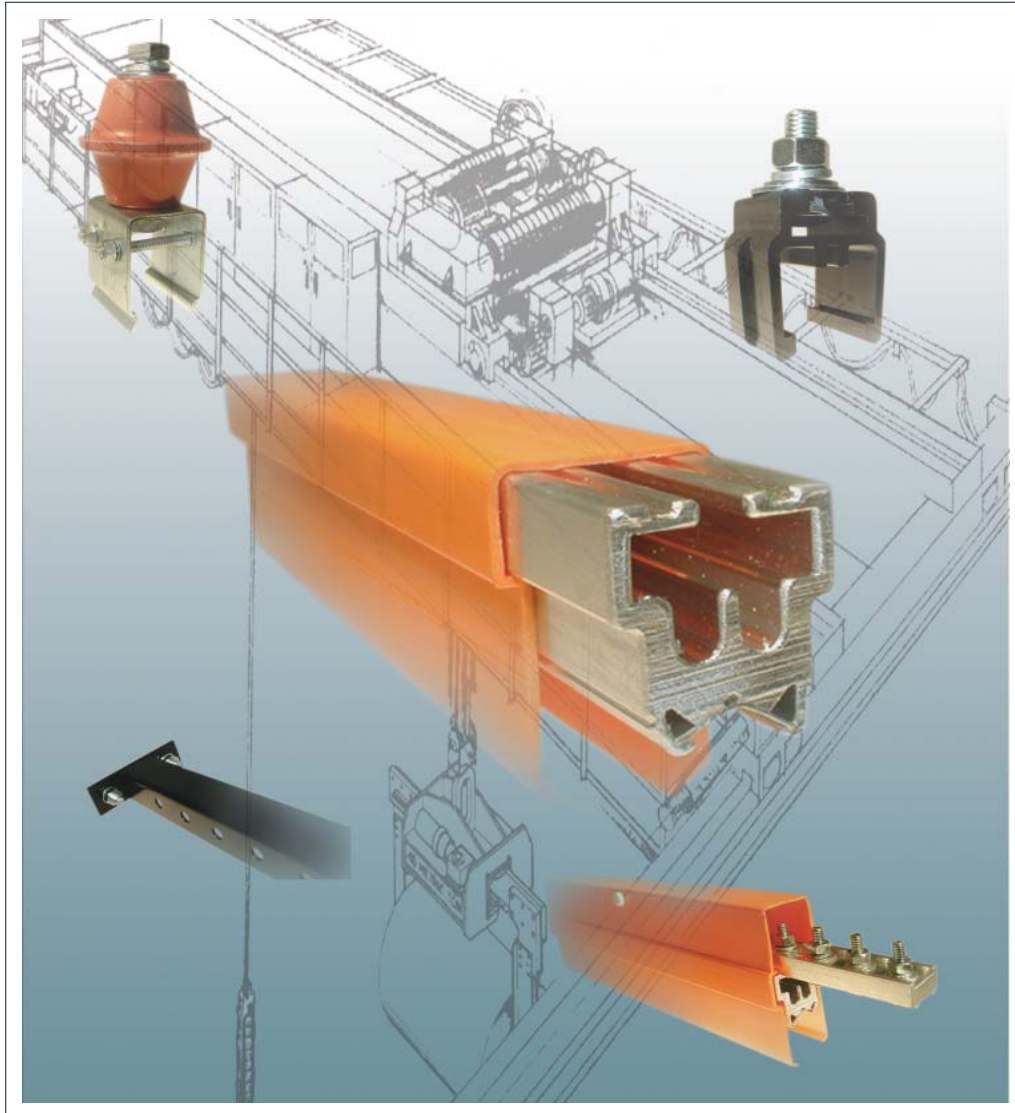


Electromotive Systems

ELECTROBAR® HX
Conductor Bar System



ELECTROBAR® HX SERIES

ENCLOSED CONDUCTOR BAR SYSTEMS

When you need high amperage power delivery for a heavy duty application, Electromotive Systems' ELECTROBAR® HX Series Enclosed Conductor Bar System is the solution.

- ELECTROBAR HX Systems can accommodate 600 Volt AC and 250 Volt DC applications.
- Line elements are available to deliver 400, 700 and 1000 amps continuous current.
- Rated for use in environments up to 160° F ambient temperature.
- Aluminum alloy extruded line elements with stainless-steel lined contact surface provide better performance and increase durability.
- Inverted V contact surface for positive tracking of collective shoes.
- Grounding conductor bar available with green cover for ease of identification.

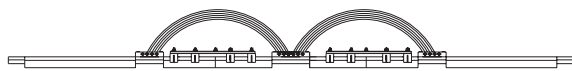
LINE ELEMENT SECTIONS

Line elements are constructed of an aluminum alloy extrusion with integral stainless steel contact surfaces. They are available in convenient 10 or 20 foot sections. All line elements are amply designed to carry the specified current rating continuously without overheating.



Catalog Number			Description
400 Amp	700 Amp	1000 Amp	
HX-400A	HX-700A	HX-1000A	Line Element Section, 20 Feet Long, Orange Cover
HX-400A-G	HX-700A-G	HX-1000A-G	Line Element Section, 20 Feet Long, Green Cover
HX-400A10	HX-700A10	HX-1000A10	Line Element Section, 10 Feet Long, Orange Cover
HX-400A10-G	HX-700A10-G	HX-1000A10-G	Line Element Section, 10 Feet Long, Green Cover
1.5 lbs./ft.	2.5 lbs./ft.	3.5 lbs./ft.	Approximate Shipping Weight

EXPANSION ELEMENTS



Expansion sections are used at all structural expansion joints and for long runways to allow for thermal expansion of the conductor bar.

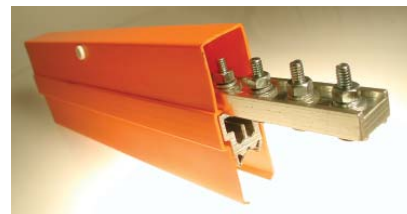
A 10 foot long expansion section is required for every 300 feet of conductor run.

For example, a 600 foot long installation would require an expansion section only in the center of the run.

Anchor pins are included with each expansion section.

Catalog Number			Description
400 Amp	700 Amp	1000 Amp	
HX-400E	HX-700E	HX-1000E	Expansion Section, 10 Feet Long, Orange Cover
HX-400E-G	HX-700E-G	HX-1000E-G	Expansion Section, 10 Feet Long, Green Cover
15 lbs.	25 lbs.	35 lbs.	Approximate Shipping Weight

JOINT ASSEMBLY KIT



Joint Assembly Kit connection assemblies are available to assure full current carrying capacity without interfering with free travel of collector contacts. The joint assembly is designed to automatically align conductor bar sections during installation. Fastening hardware ensures a good, tight electrical and mechanical joint between conductor sections. The joint assembly kit includes the insulating joint cover.

Catalog Number			Description
400 Amp	700 Amp	1000 Amp	
HX-400JK	HX-700JK	HX-1000JK	Joint Assembly Kit
1.5 lbs.	2.0 lbs.	3.0 lbs.	Approximate Shipping Weight

HANGER ASSEMBLY



Polycarbonate
Snap-In Hanger



Steel Hanger



Insulator Hanger

To provide an additional level of insulation, as well as rigid support of conductor sections, choose from polycarbonate snap-in, steel clamp, or insulated hanger assemblies. Hanger assemblies accommodate a minimum conductor spacing of 4 inches.

Catalog Number			Line Element Rating
Polycarbonate Snap-In Type	Steel Clamp Type	Insulator	
HX-400H	N/A	N/A	400 Amp
HX-1000H	HX-1000SH	HX-1000SHI	700 & 1000 Amp
.2 lbs./ .3 lbs.	.6 lbs.	1.20 lbs.	Approximate Shipping Weight

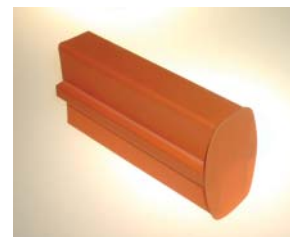
POWER FEED KIT



The Power Feed Kit includes a cover and cable lug terminals for power connection.

Catalog Number	System Rating	Approximate Shipping Weight
HX-400FK	400 Amp	.8 lbs.
HX-700FK	700 Amp	2.4 lbs.
HX-1000FK	1000 Amp	3.2 lbs.

END COVER



This vinyl cover insulates the conductor bar at each end of a system.

Catalog Number	Description	Approximate Shipping Weight
HX-400EC	End Cover for 400 Amp	.7 lbs.
HX-1000EC	End Cover for 700 & 1000 Amp	1.0 lbs.

MOUNTING BRACKET



Web mounting brackets are available in 24 inch lengths with mounting holes punched every two inches. Mounting hardware is included.

Catalog Number	Description	Approximate Shipping Weight
BK-HX24	Web Mounting Bracket, 24 inch	3.7 lbs.

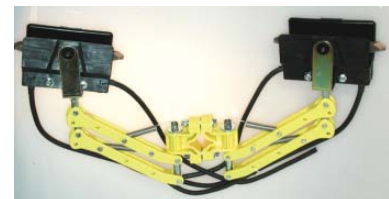
COLLECTOR ASSEMBLIES

Collector assemblies are offered in single or double shoe designs. They provide continuous current pick up from 200 through 400 amperes. The contact shoes are mechanically supported by an insulating support assembly that is spring loaded by an arm and body mechanism. Collectors are furnished with copper graphite contacts for movement up to 900 feet per minute.

Catalog Number	Collector Type	Approximate Shipping Weight
PHX-200SPC-A	200 Amp Single Shoe	.7 lbs.
PHX-400STPC-A	400 Amp Double Shoe	1.0 lbs.



Single Shoe Collector



Double Shoe Collector



YOUR ONE-STOP SOURCE FOR MATERIAL HANDLING CONTROL SOLUTIONS



ENGINEERED SYSTEMS & SOLUTIONS

Project Evaluation
Project Management
Engineering Design
System Manufacturing and Testing
Field Startup, Testing, Training and Support
Customer Training and Maintenance Support
Application Solutions
PLC/PC Program Development

IMPULSE™ AC ADJUSTABLE FREQUENCY DRIVES

230, 460 and 575 Volt Power Platforms
.25–1,500 Hp
Exclusive Application Software
Specific Crane & Hoist Software

OMNIPULSE™ DIGITAL DRIVES

DSD – AC in/DC out
15–800 Hp
DDC – DC in/DC out
5–500 Hp

MAC™ •2000 MOTOR ACCELERATION CONTROL

Single & 2 Speed — up to 15.2 Amps
Contactor Panels

VARIABLE SPEED MOTOR CONTROL PANELS

Standard Pre-Engineered Systems
Custom Engineered Systems

MOTORS & ACCESSORIES

Standard Inverter Duty AC Induction Motors
Flux Vector Designed Motors

POWER DELIVERY SYSTEMS

ELECTROBAR® 8-Bar — 90, 110, 250, 350 Amps
ELECTROBAR® FS — 90, 110, 125, 250, 400 Amps
ELECTROBAR® ELITE — 60, 100, 130, 200 Amps
ELECTROBAR® HX — 400, 700, 1000 Amps
FABA® Conductor Bar Systems — 100 Amps

ELECTROMOTIVE™ FESTOONING SYSTEMS

Standard Duty
Heavy Duty
Mill Duty

SBP® & SBP2® PENDANT PUSH BUTTON STATIONS

Standard 2 through 12 Button Stations
Custom Configured Stations

TELEMOTIVE & ENRANGE RADIO REMOTE CONTROL SYSTEMS

Flex Ex
telePendant™
300T
Pendant™
telePilot™
100T
PGT
DTX
MLTX™
SLTX™
700T
JLTX™
Locomotive Control Systems

COLLISION AVOIDANCE SYSTEMS

LaserGuard™
ReFlx™

MONDEL BRAKES

200S Industrial Shoe Brakes
4"–19" Diameter
6–2,250 Lb. Ft. Torque
AC, DC, Hydraulic Actuators
AC Explosion Proof Actuators

AIST-NEMA 300M Mill Duty Shoe Brakes

5"–30" Diameter
10–11,000 Lb. Ft. Torque
AC, DC, Hydraulic Actuators
AC Explosion Proof Actuators

400D Heavy Duty Disc Brakes

8"–50" Diameter
50–30,000 Lb. Ft. Torque
AC, DC, Hydraulic Actuators
AC Explosion Proof Actuators

Braketronic™ Control System

Braketronic Controller
Standard Pre-engineered Panel
Mill Duty Foot Pedal (optional)

N49 W13650 Campbell Drive
Menomonee Falls, WI 53051
Toll-Free Phone 800.288.8178
Toll-Free Fax 800.298.3503
Phone 262.783.3500
Fax 262.783.3510

WWW.MAGNETEKMH.COM

Pub No. Electrobar HX_09

© Magnetek, Inc. 2009