

IRCAMERAS

INFRARED IMAGING SYSTEMS

InspectIR™ 4000

Portable Thermal Imager

The InspectIR™ 4000 offers outstanding thermal imaging and temperature measurement performance in an affordable and easy to use infrared camera.

The ergonomically designed imager is based on a state-of-the-art uncooled microbolometer camera core which provides crisp imagery and accurate temperature measurement. A long life rechargeable Lithium-ion battery pack operates the camera for up to four hours. For ease of use the image is displayed on a large 3½" backlit color LCD. Level and span can be adjusted manually, or by utilizing the camera's automatic gain control.

Images can be captured using an SD card for recall and further analysis if required. Images can also be downloaded to a PC from the memory card or via a USB interface for analysis, report generation and printing. A built in laser pointer facilitates identification of the equipment under inspection.

The InspectIR™ 4000 is fully calibrated. Two moveable spotmeters provide temperature measurement throughout the entire image, and a centrally located region of interest displays minimum, maximum and average temperatures. Adjustable emissivity input is available to insure accurate temperature readings displayed in either degrees Fahrenheit or Celsius.

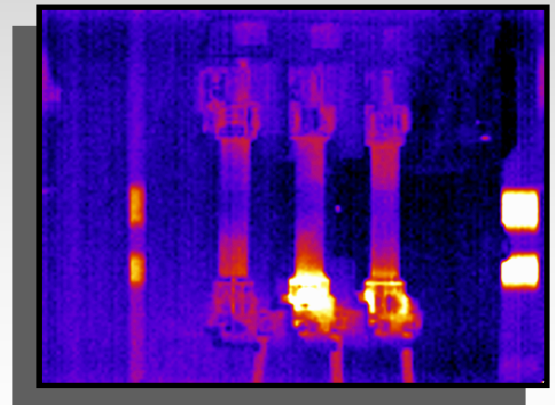


Key Product Features

- Low cost & simple operation
- Crisp high resolution images
- Built in laser pointer
- Dual movable spotmeters
- Region of interest measurements
- Delta-T measurement
- Image browser
- 2X digital zoom
- Automatic hot or cold spot tracking
- USB interface

Applications

- Electrical inspections
- Mechanical surveys
- Energy conservation
- Flat roof surveys
- Process equipment monitoring
- Research & development



InspectIR™ 4000 Portable Thermal Camera System Specifications

Performance	
Temperature Measurement Range	-10°C to +250°C
Field of View (FOV)	20° x 15°; manual focus lens
Spectral Response	8 to 14 micrometers
Sensitivity	<150mK @ 25°C scene temperature
Displayed Image	3 1/2" color LCD with LED backlight; 4 color palettes
Detector	160 x 120 pixel uncooled microbolometer
Image Storage	Up to 1000 images per SD card supplied
Imager Power Supply	
Battery	Lithium-ion field rechargeable, replaceable batteries
Operation Time	4 hours continuous operation
AC Operation	AC adaptor, supplied
Environment	
Temp. operating range	-15°C to +45°C
Temp storage range	-20°C to +70°C
Humidity	10% to 90% non condensing
Mechanical	
Housing	Impact Resistant Plastic
Dimensions	230mm x 120mm x 110mm
Weight	0.75kg including battery
Mounting	Handheld & Tripod mounting
Deliverables	
Included with InspectIR™ 4000 Camera	Rechargeable Li-Ion Battery, AC adaptor, USB Cable, user manual and software CD, carrying case, wrist strap, SD card and SD card reader

All specifications subject to change without notice. Export of the commodities described herein from the United States is strictly prohibited without a valid export license issued by the U.S. Department of State or U.S. Commerce Department (jurisdiction contingent on specific product).

IRCAMERAS, INC.

877.IRcameras Toll Free • 508.668.5650 Voice • 508.668.5054 Fax
info@IRcameras.com email
www.IRcameras.com