



IKEY Mobile Software
150 Braeloch Road
Colchester, VT 05446
1-802-893-3130

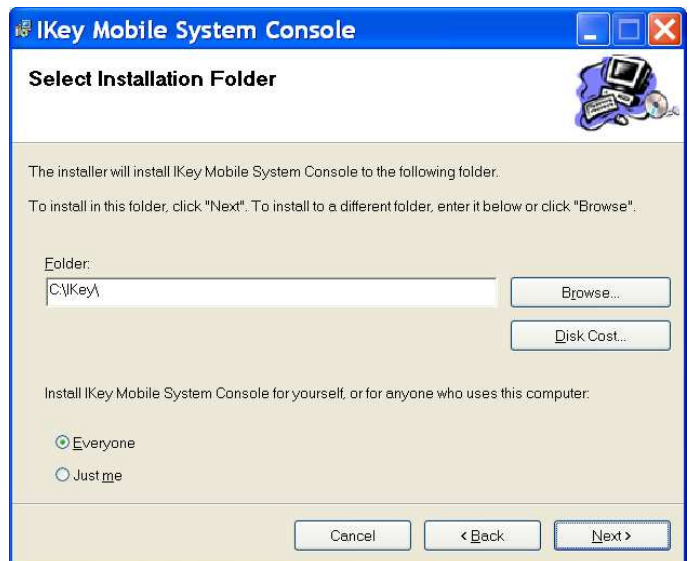
Quick Install for IKEY Software

Page 1

1. Double Click the IKEY_Mobile_System_Console.msi

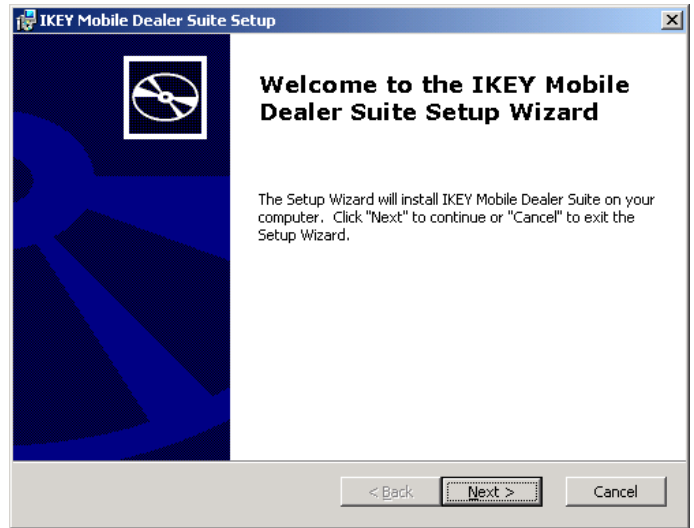


2. Click next to default Directory C:\IKEY\

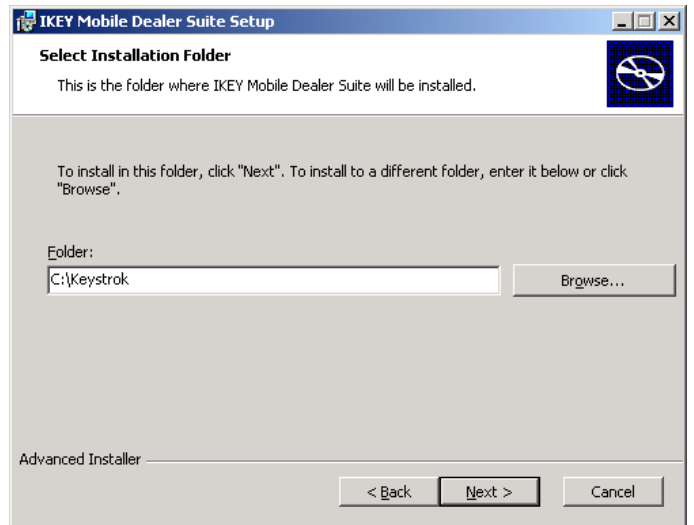


3. Next Until Finished and Close

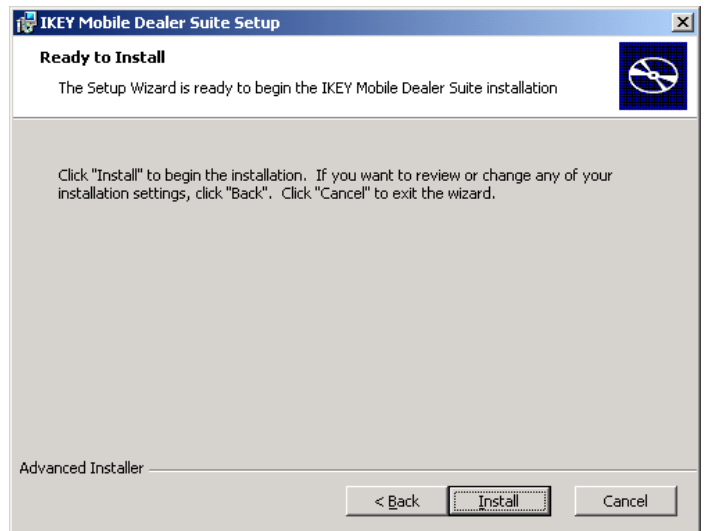
4. Double click the IKEY *.msi installer
5. Then click next



6. Select Directory Default should be C:\IKEY



7. Select Install
8. Select Finish



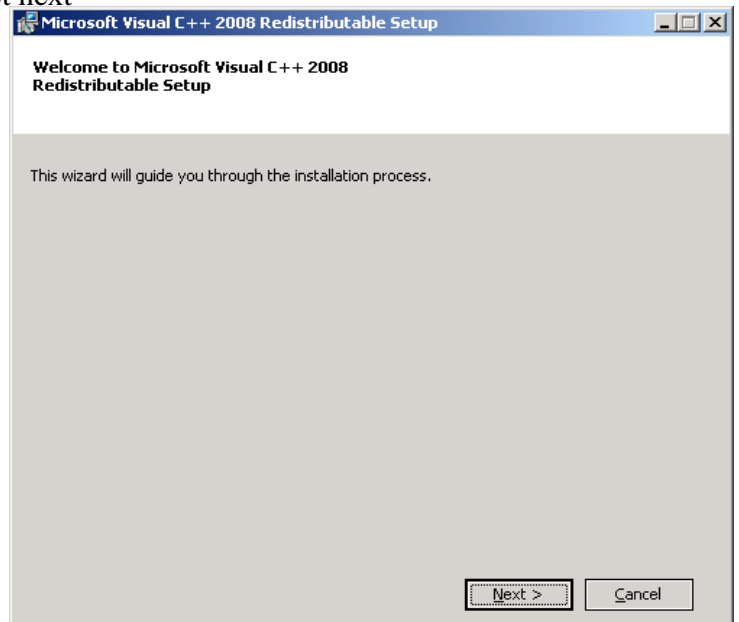
9. Double Click the IKEY Mobile System Console



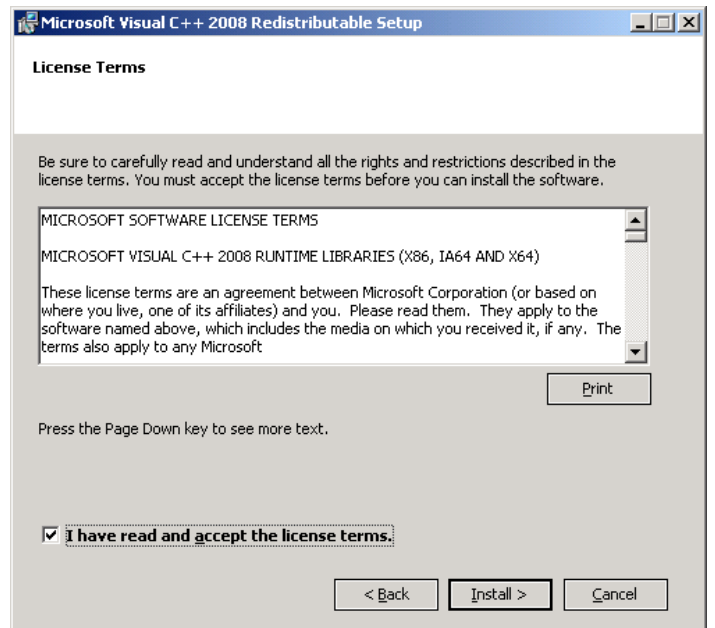
10. Click on the Other Software button

11. Browse other software for vcredist_x86.exe *If needed

12. Double click to install and then select next



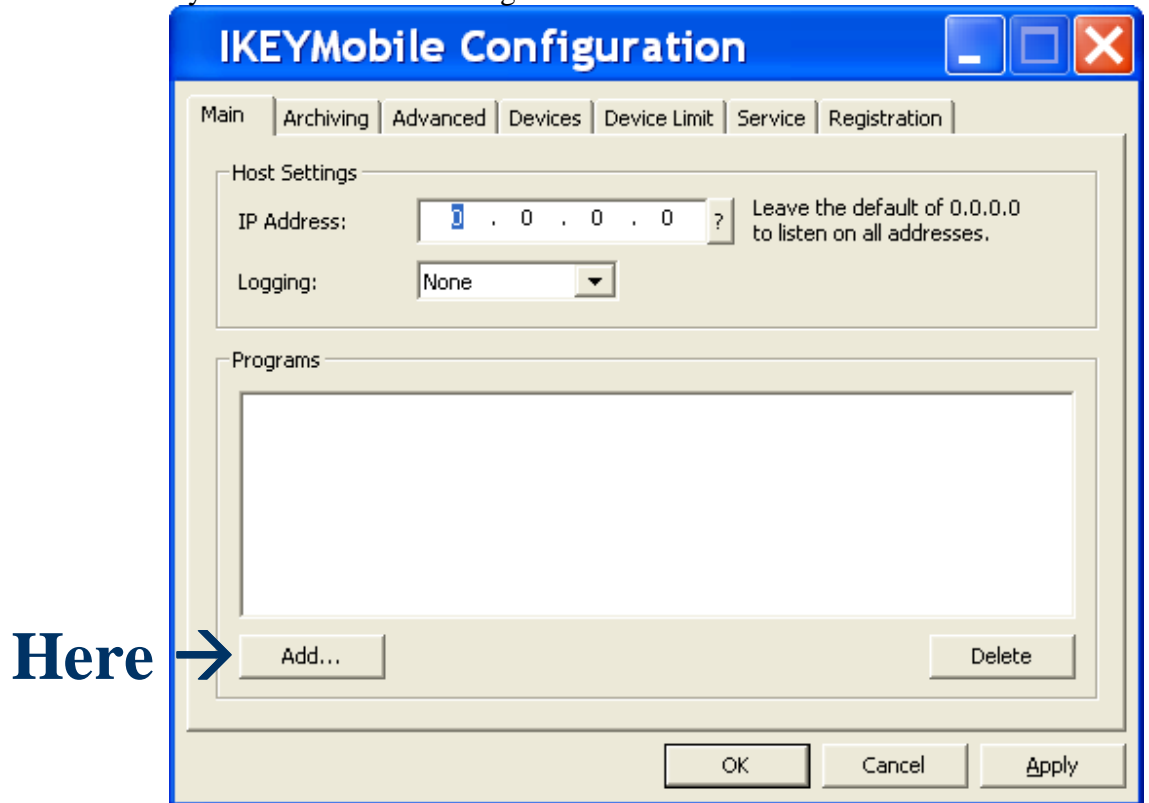
13. Check I have read (if you have read it) and click install



14. Click on IKEY Mobile Server Configuration



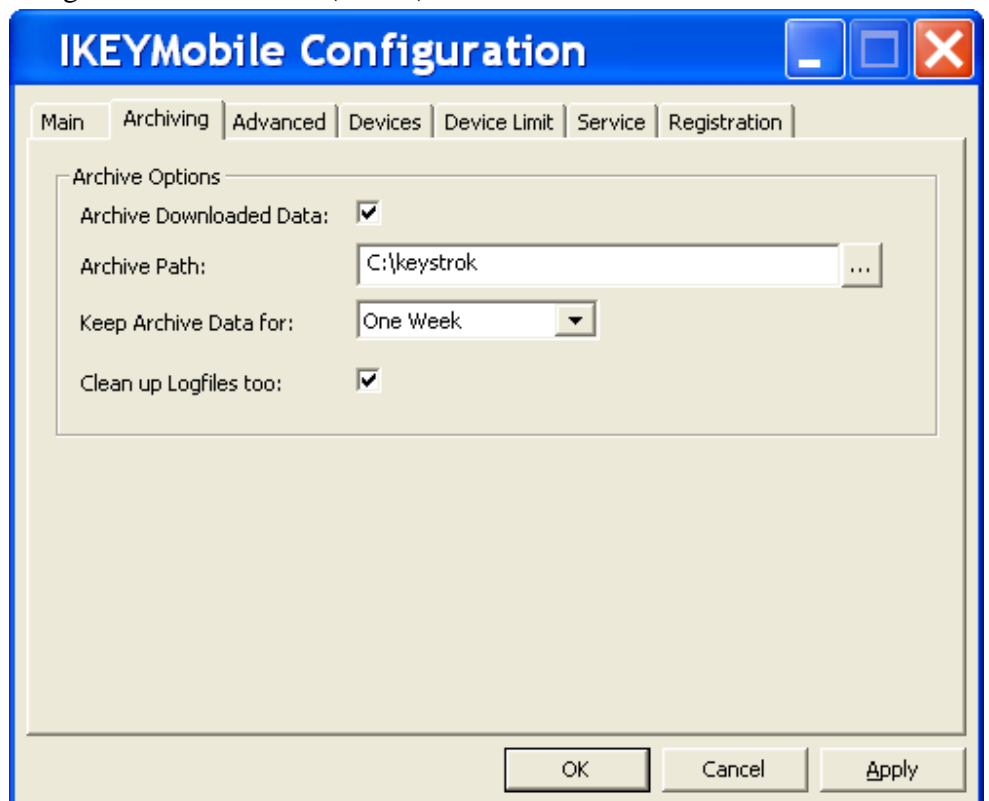
15. Click add to add all your Data Collection Programs



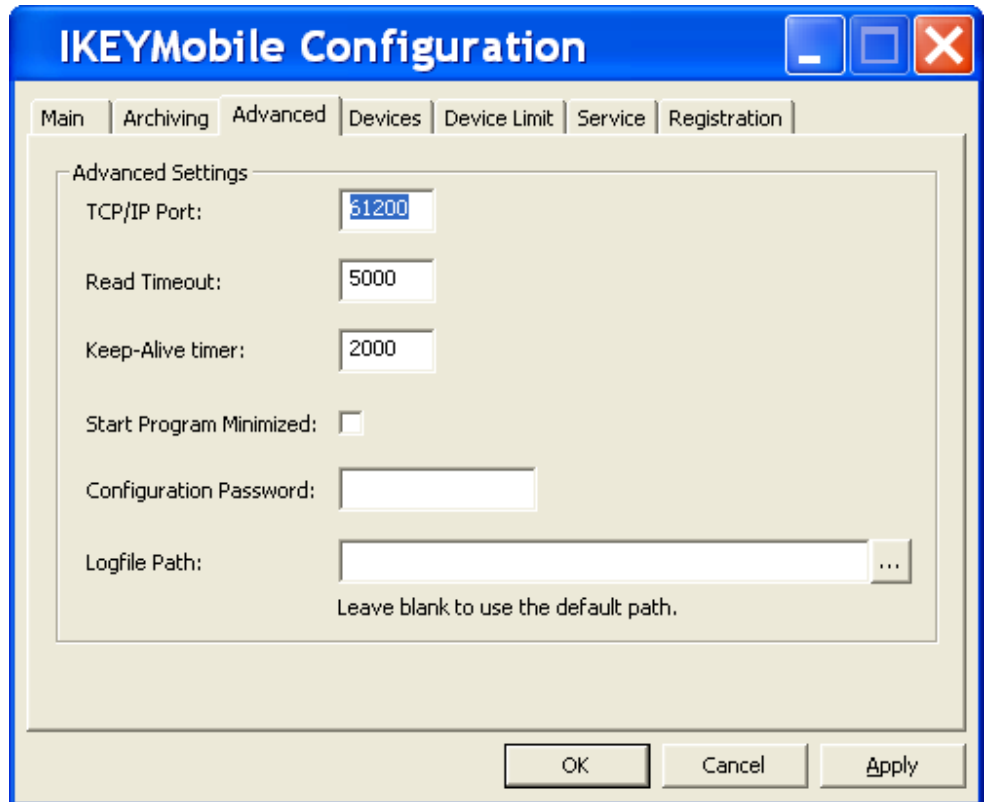
16. Browse to all *.itb files within C:\IKEY or selected directory and add them one at a time by selecting them and click open

17. Option you may select logging to keep a commutation log.

18. Other Options archiving collected data to C:\IKEY\Archive



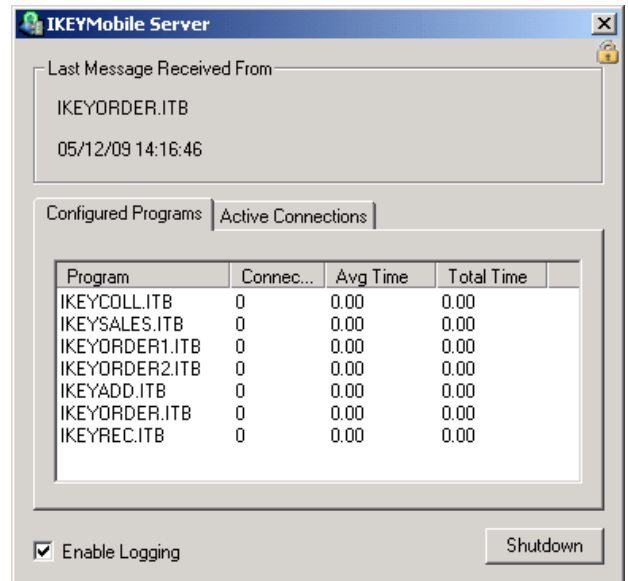
19. Advanced tab if using a VPN for or remote stores you may change Read timeout and Keep-Alive timer. Also you may select Start Program Minimized. Enter Configuration password if desired. **For Device Limit please review Device Limit Doc
20. To install the server as a Service select the Service tab and install Service and Select automatic



21. If you choose to use the .exe then Select the IKEY Mobile Server



22. You may check enable logging



23. Plug in hand held unit in computer using the USB cable or if your wireless make sure you are connected to the network

24. You may need to install Microsoft ActiveSync also included in Other Programs

25. Select the IKEY Mobile Client Setup to load IKEY on your Device



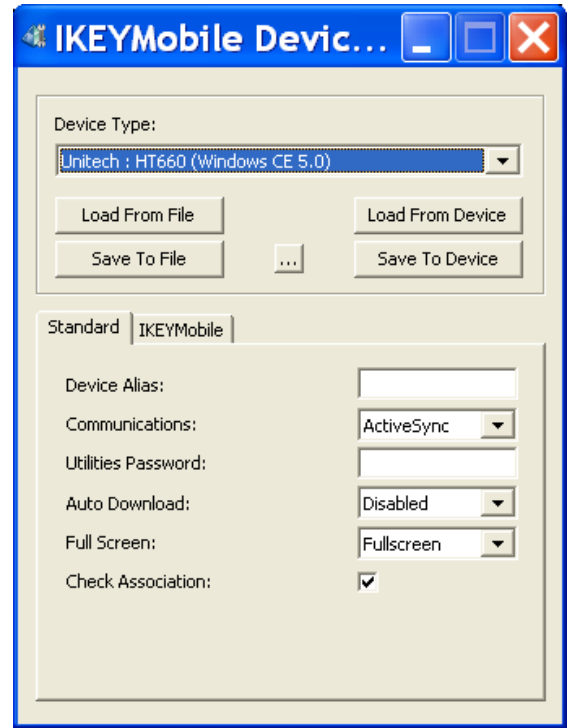
26. Click Install



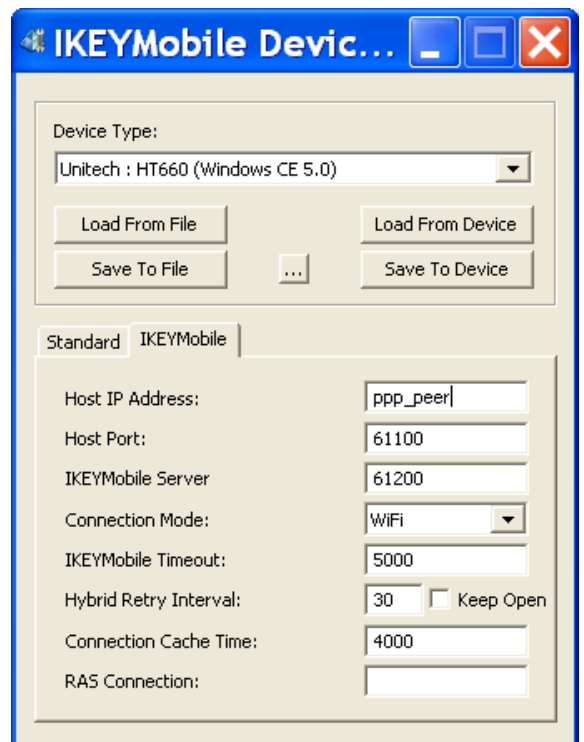
27. Select the IKEY Mobile Device Configuration



28. Select device type then choose Communications as active sync then Auto Download disabled then Full Screen as Normal or Full screen

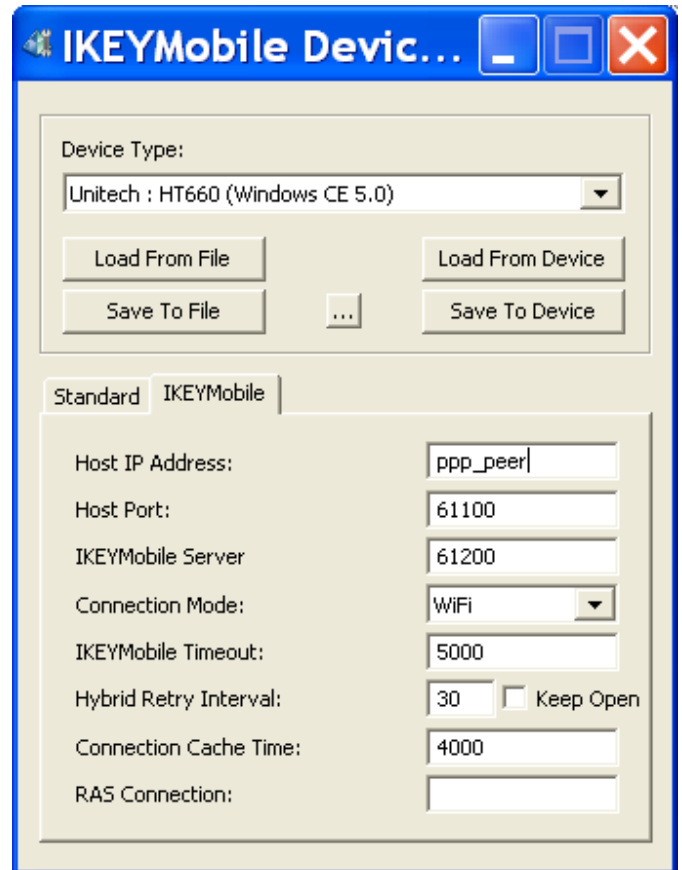


29. Then select IKEYMobile tab and change host to ppp_peer then select save to device

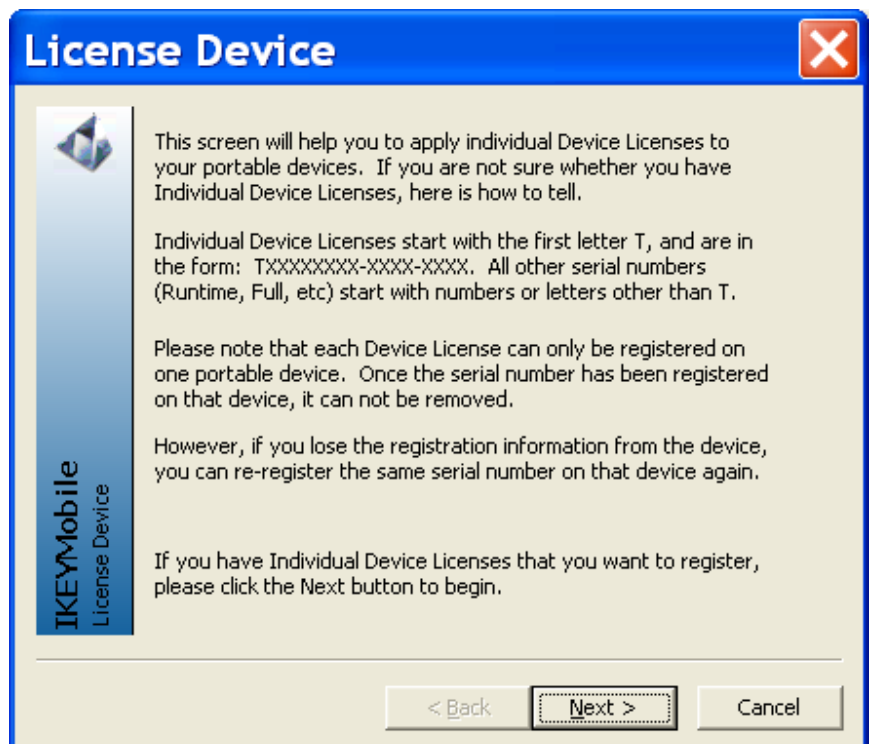


23. Then right click the top blue bar and select device licensing

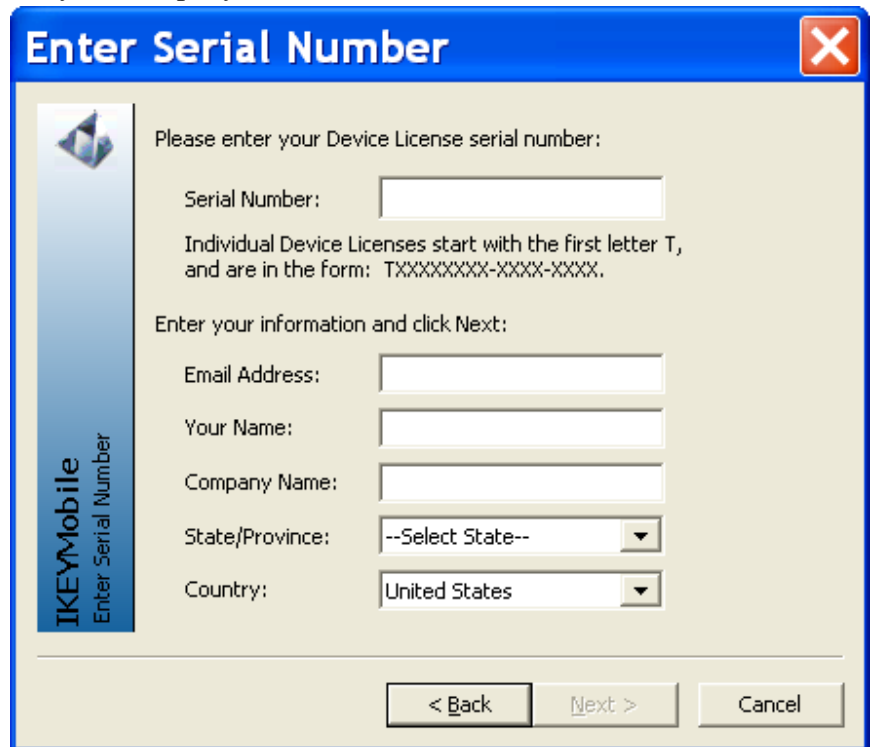
Here →



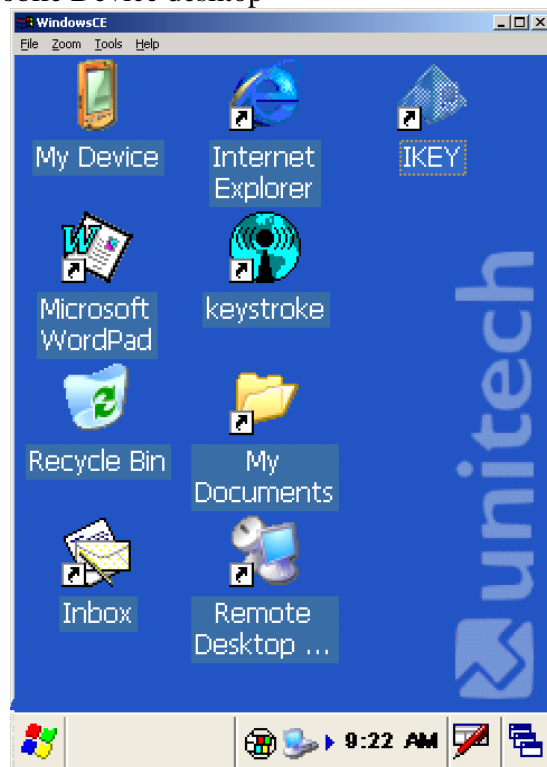
24. Then Select next



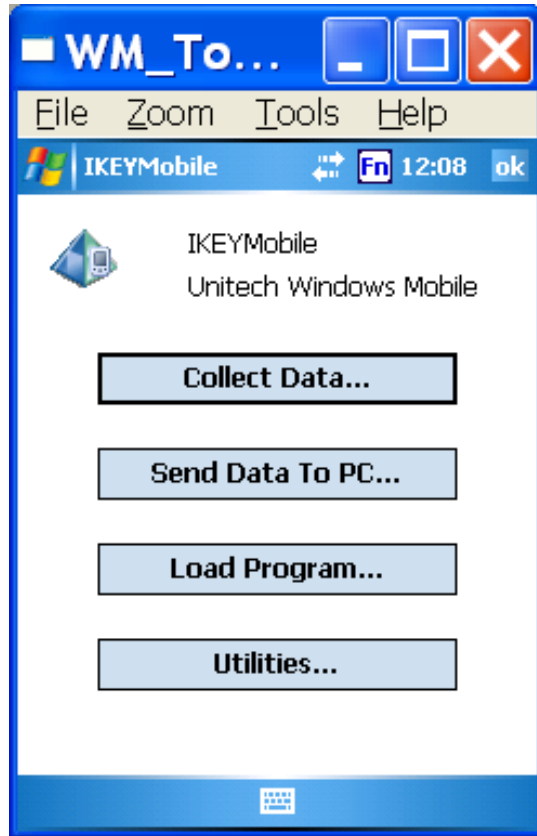
25. Then add your license and your company info



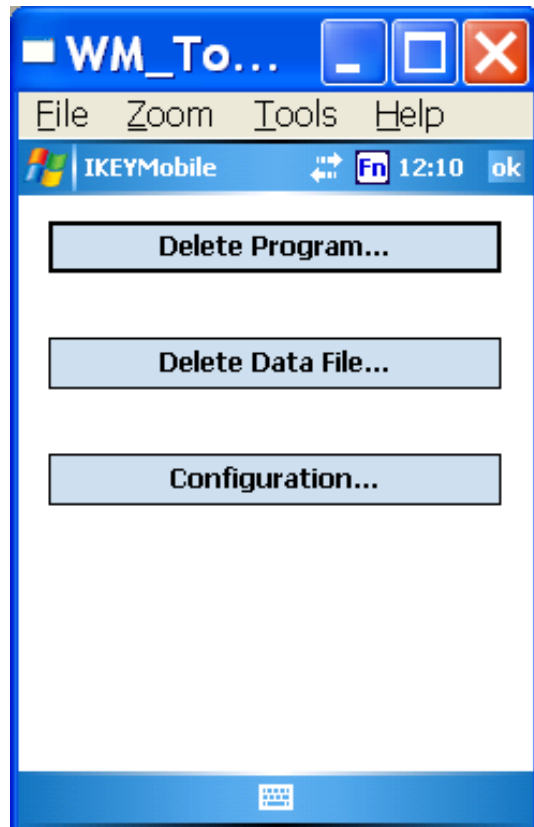
26. Double click IKEY icon on your Mobile Device desktop



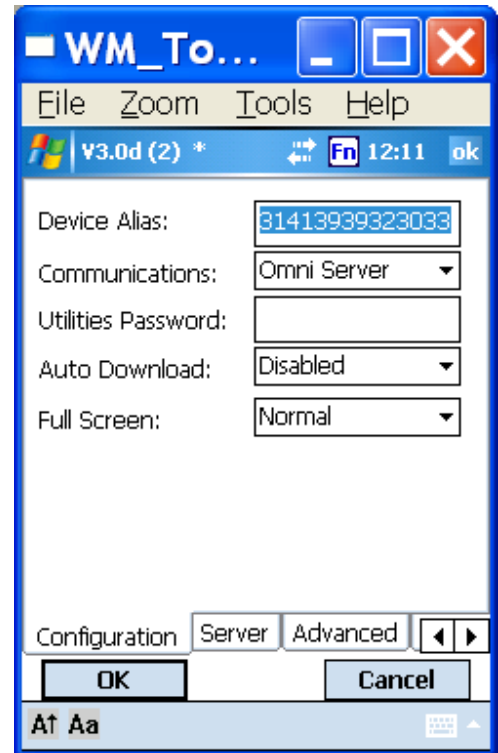
27. Tap Utilities



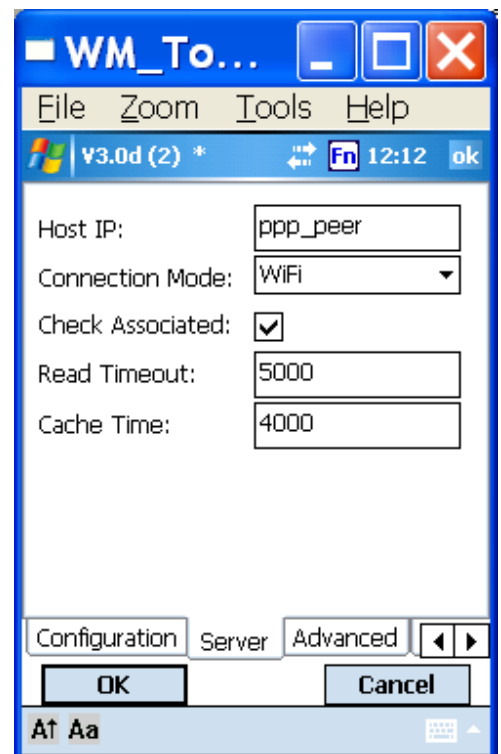
27. Tap Configuration



- 28. Select communications to Omni Server
- 29. Select to full screen or Normal
- 30. Tab Server tab



- 31. Select you ip host you may need go to the computer where you installed IKEY and select start>run>type cmd hit enter> type ipconfig hit enter this will display your computers ip address place the address or ppp_peer if connecting with usb cable



*note that the read out timeout may have to be changed depending on how large your database is.

32. Tap ok then close utilities and then tap Load Program
32. Now you will be able to load your software and inventory on the device
33. If it is unable to connect please check your setting.
34. Now you are ready to use your software, go to collect data
35. Browse your C:\IKEY folder for the IKEY*_settings.ini and IKEY*.ini and enter the correct path (read the turn off batch file for more details on the setting files)

