

4931  
441M

HUMMER<sup>®</sup>



# Service Center Repair Manual



624931300-8/04



OFFICIAL  
LICENSED PRODUCT

99-5903-34155

HUMMER, H2, all related Emblems and distinctive vehicle model body and grill designs are General Motors Trademarks used under license by Little Tikes.

## | Overview of Vehicle

This product runs on a 12 volt sealed lead-acid battery with 2 motors, 1 motor for each rear wheel. Please see electrical schematics for more details.

## | Gearshift / switches

There are two switches activated by the gearshift to control speed and direction. The switches are identical and each has only 2 positions. Pulling the gearshift up towards the seat puts the vehicle in reverse low speed. Sliding it down one position switches the upper switch, which controls forward/reverse. The car is now in forward low speed. Sliding the gearshift down a second time switches the lower switch, which controls high-speed/low-speed. The car is now in forward high speed. Note that with this configuration it is impossible to put the vehicle in high speed reverse; this is important for safety. There is a high speed lock-out screw which goes horizontally into the gearshift assembly; this screw physically blocks the gearshifter from going down into the high-speed position. See the operator's manual for pictures of the lock-out screw.

## | Thermal breaker

The plastic molded piece that is attached to the battery top contains a thermal breaker. This is a 23 Amp self-resetting thermal breaker. It will trip if a current draw of more than 23 Amps is sustained for a short period. It automatically resets after approximately 8 to 15 seconds. In low speed the normal current draw is approximately 6 Amps, in high speed the normal current draw is approximately 12 Amps. Note that it is normal for short spikes of current greater than 50 amps to occur when the foot pedal is initially depressed, but the time and heat required to trip the thermal breaker will not be activated unless an unusually high load is put on the vehicle. Do not attempt to access the thermal breaker, replace the battery assembly if a problem is detected.

# Battery Operated Products Quick Check Service Chart

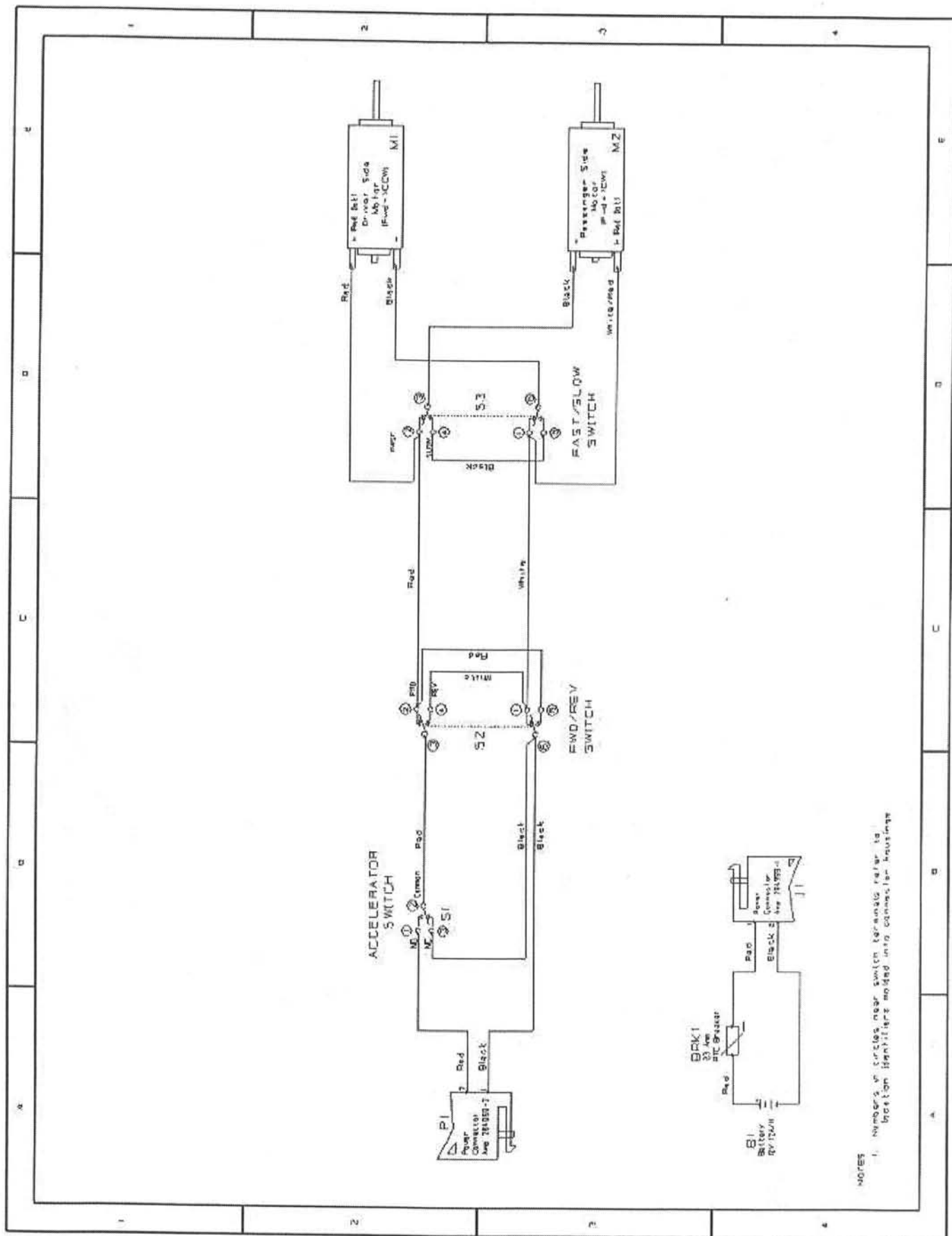
Situation	Diagnosis	Action Taken
<b>Missing or damaged parts</b>	Retailers call 1-800-998-7485 Consumers call 1-800-321-0183 Service Centers call 1-800-321-4424, ext. 3037	Little Tikes will ship parts within 48 hours
<b>Car runs slowly in both speeds</b>	Recharge batteries. Check if red light comes on while charging. If not, replace battery.	Charge until light goes off. A fully discharged battery will take 18 hours to charge. See Operator's Manual for instructions.
<b>Car won't run in high speed</b>	Check high speed lock-out screw.	Be sure high-speed lock-out screw is in correct location. See Operator's Manual for instructions.

## Battery Replacement

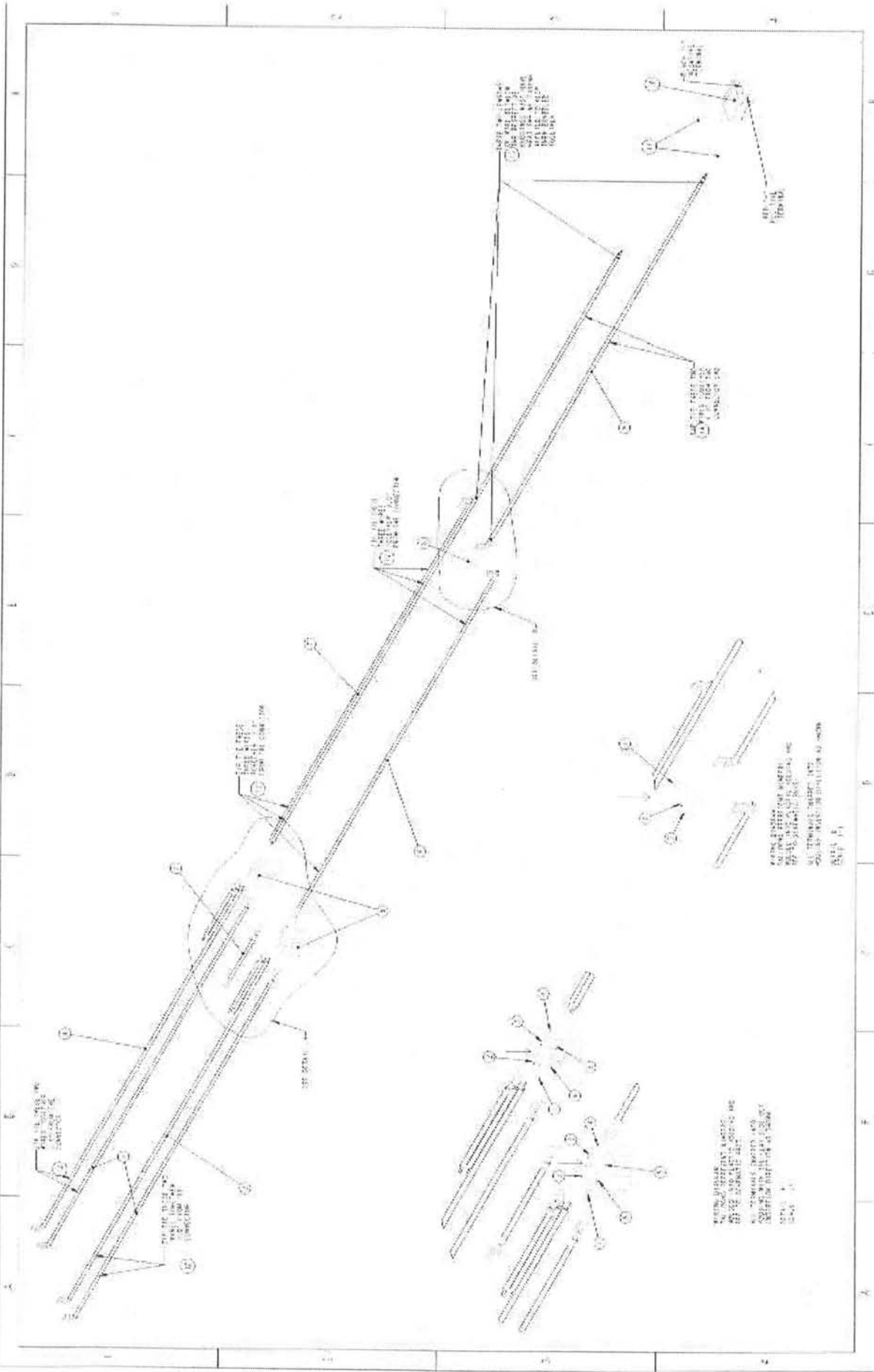
- Unlatch straps on both sides and open hood.
- Lift and rotate plastic battery clamp holder clockwise. Slide end of metal battery clamp and pull end out of hole, then rotate battery clamp out of the way to install battery.
- Place battery in compartment. Fold battery handle down.
- Re-attach the battery clamp and rotate battery clamp holder to secure.
- Attach car connector to battery connector.
- Close hood, attach straps.

## Electrical Diagnostic Warnings

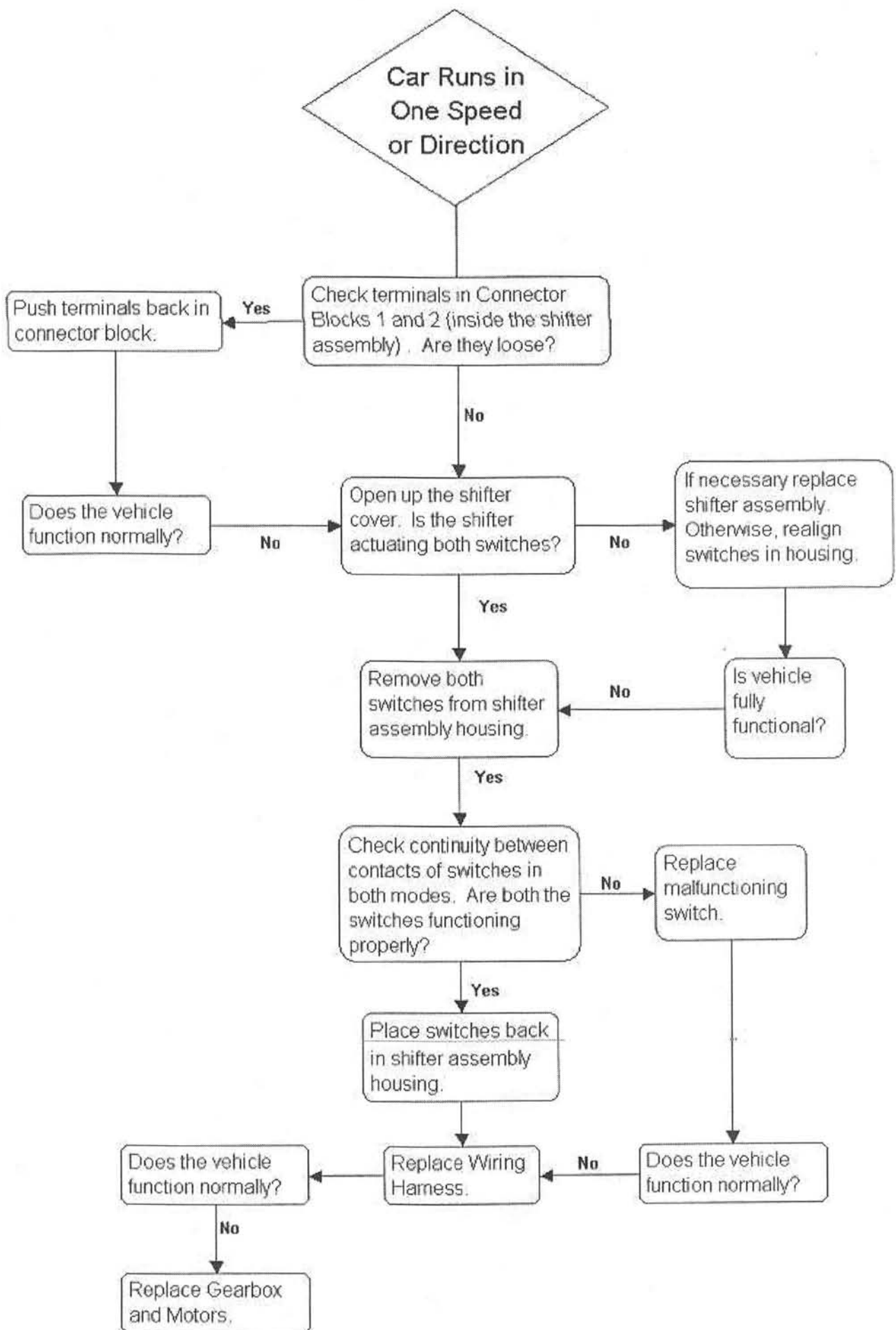
- Always disconnect batteries before servicing or replacing any electric components. This includes the batteries, wiring harness, switches, motors and transmissions. Failure to do so may result in an electrical shock or personal injury.
- Do not attempt to repair a defective wiring harness. Replace if defective.
- Do not attempt to repair a defective switch. Replace if defective.
- Do not attempt to repair a defective or worn out motor (motor is not serviceable). Replace defective or worn out motors with gearbox motor assembly.
- Do not attempt to service or repair a battery. Replace if defective and recycle old battery through authorized reclaimer.
- Do not attempt to service or repair a charger. Replace if defective.
- Always use genuine Little Tikes® replacement parts to ensure a quality repair. Failure to do so may cause personal injury and will void the vehicle warranty.
- Never attempt to bypass or override the function of a thermal breaker or switch. To do so will result in possible personal injury and will damage the vehicle.

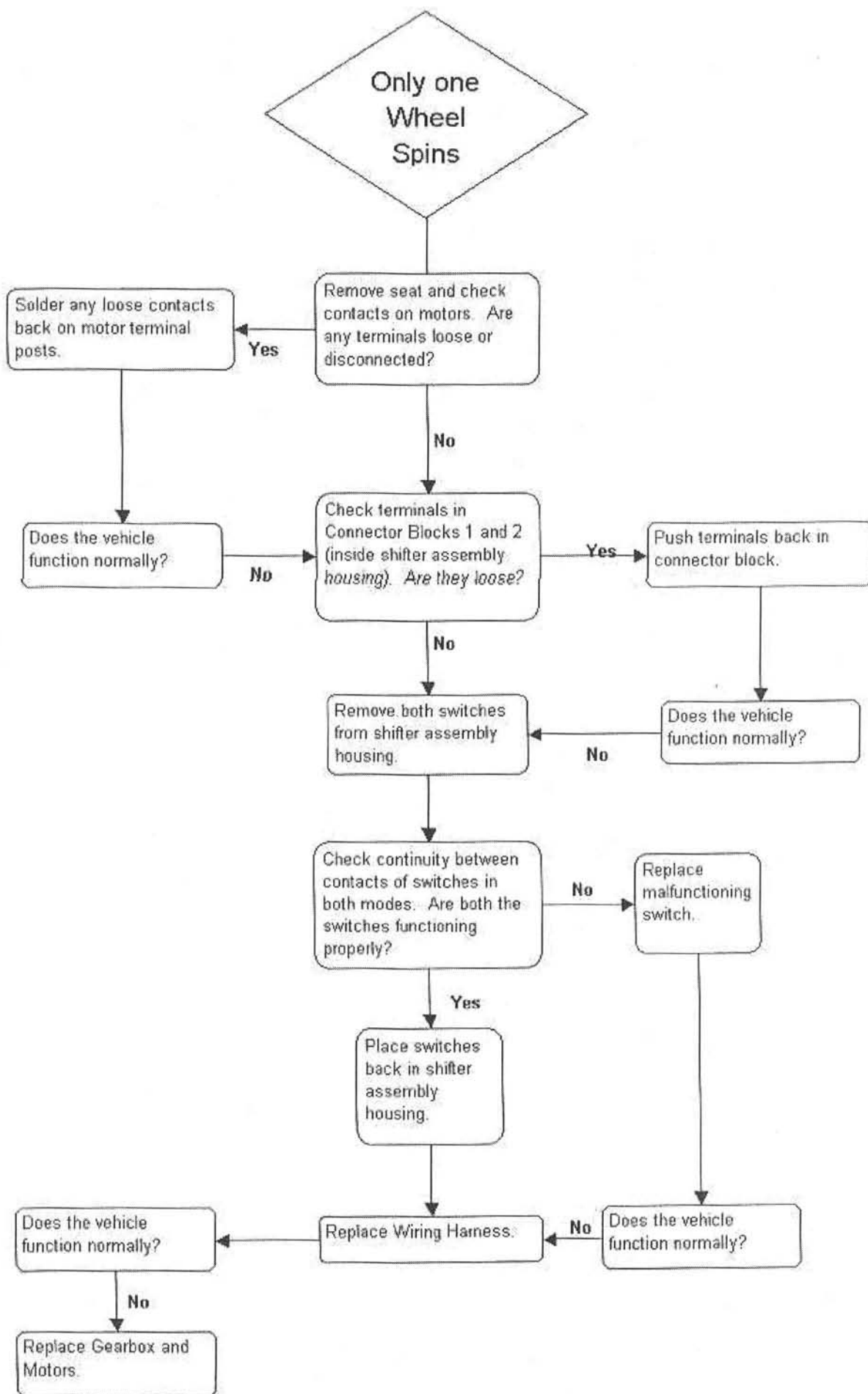


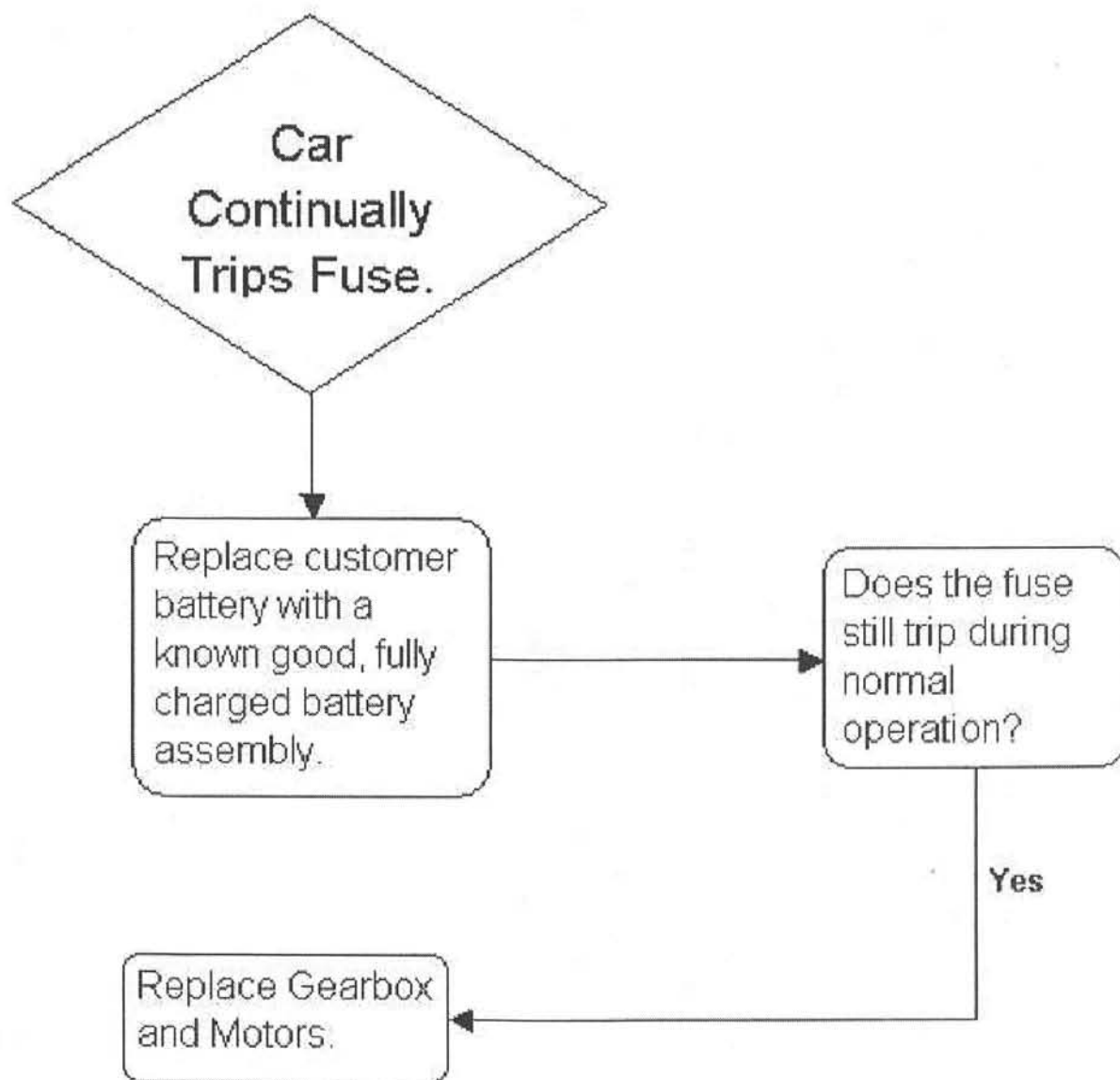
NOTES  
 1. Numbers in circles near switch terminals refer to  
 position identifier molded into connector housing



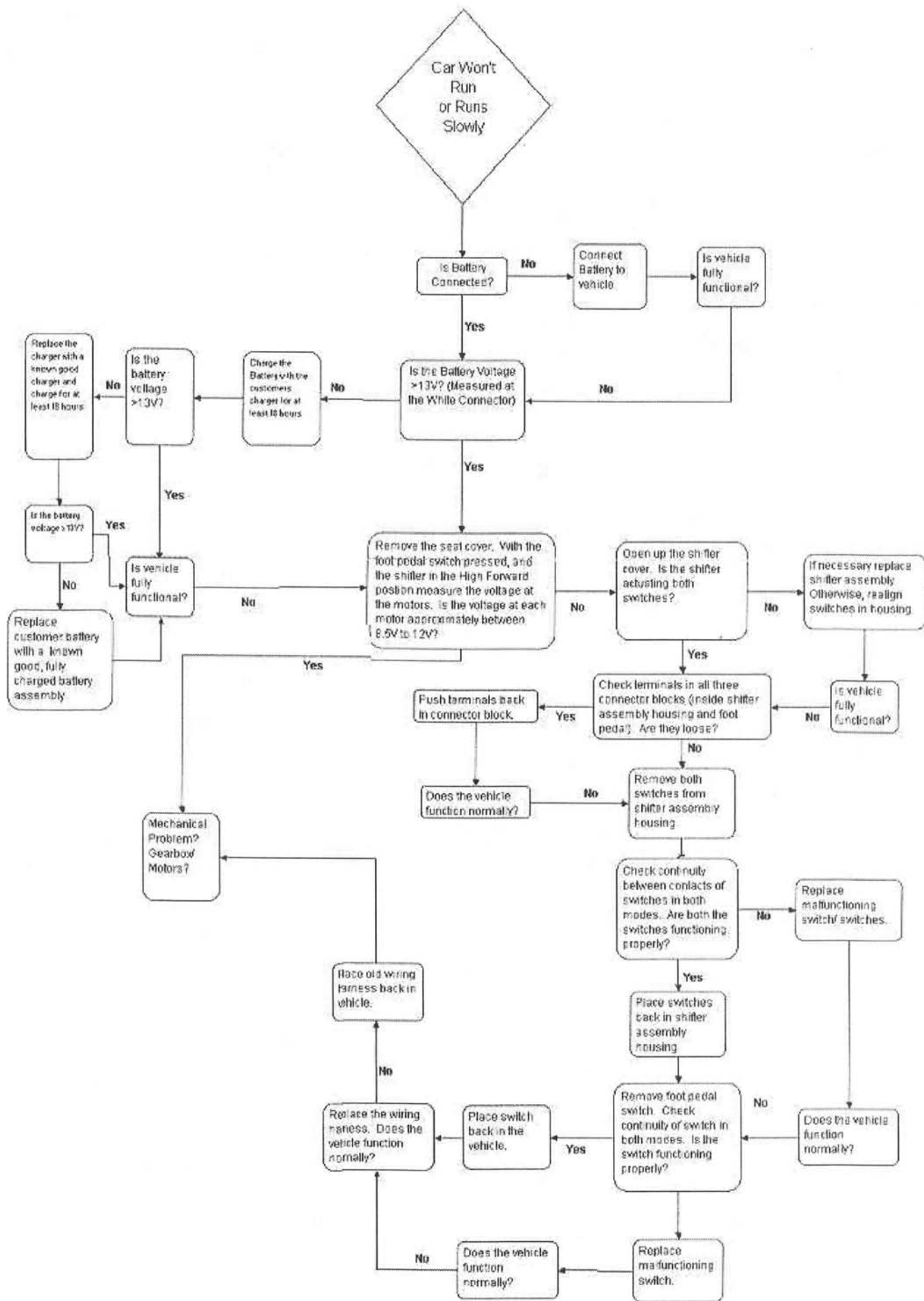
1. 1000 LB. CAPACITY  
 2. 1000 LB. CAPACITY  
 3. 1000 LB. CAPACITY  
 4. 1000 LB. CAPACITY  
 5. 1000 LB. CAPACITY  
 6. 1000 LB. CAPACITY  
 7. 1000 LB. CAPACITY  
 8. 1000 LB. CAPACITY  
 9. 1000 LB. CAPACITY  
 10. 1000 LB. CAPACITY  
 11. 1000 LB. CAPACITY  
 12. 1000 LB. CAPACITY  
 13. 1000 LB. CAPACITY  
 14. 1000 LB. CAPACITY  
 15. 1000 LB. CAPACITY



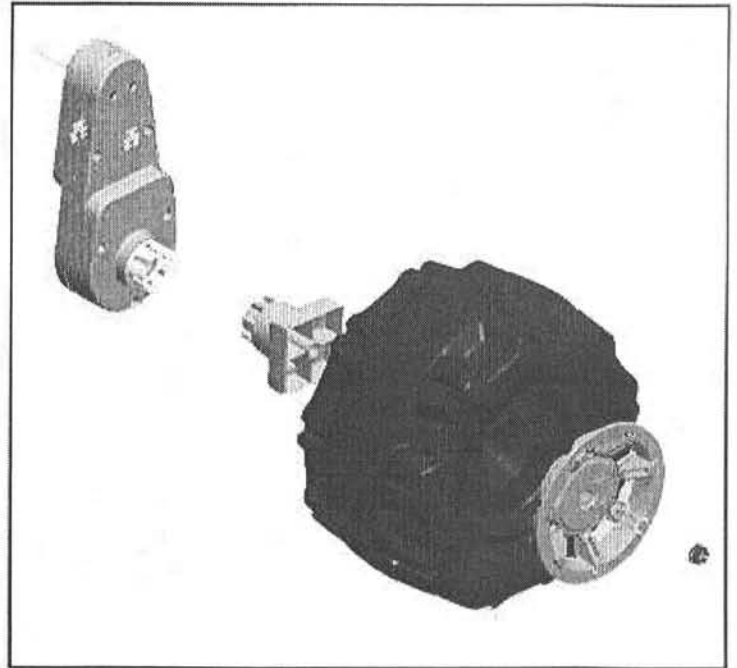








## **CHANGE** | Wheel, Hubcap, Wheel Bushing



### **Additional parts needed**

- Capnut

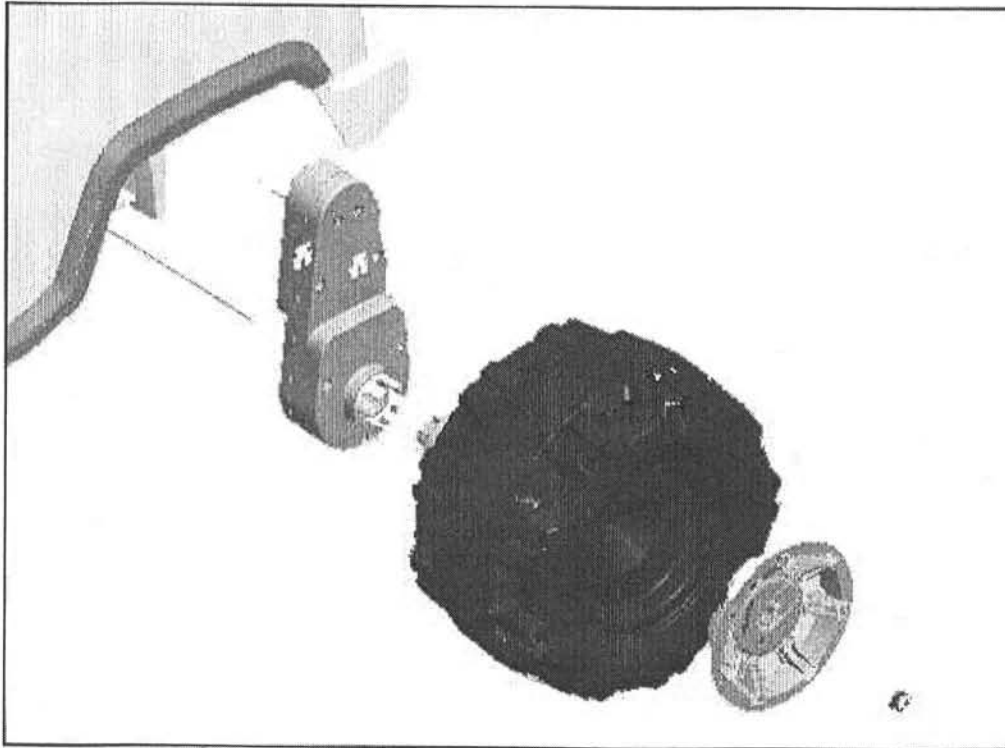
### **Tools needed**

- Pliers
- Hammer
- Capnut Tool

### **Unplug and remove battery**

- Remove capnut, pull off hubcap and wheel / bushing assembly from axle
  - Remove bushing from wheel
  - Put bushing on new wheel
  - Put wheel / bushing assembly on axle
  - Put on hubcap
  - Put on capnut
  - Replace battery

## **CHANGE | Rear Axle**



### **Additional parts needed**

- Capnut

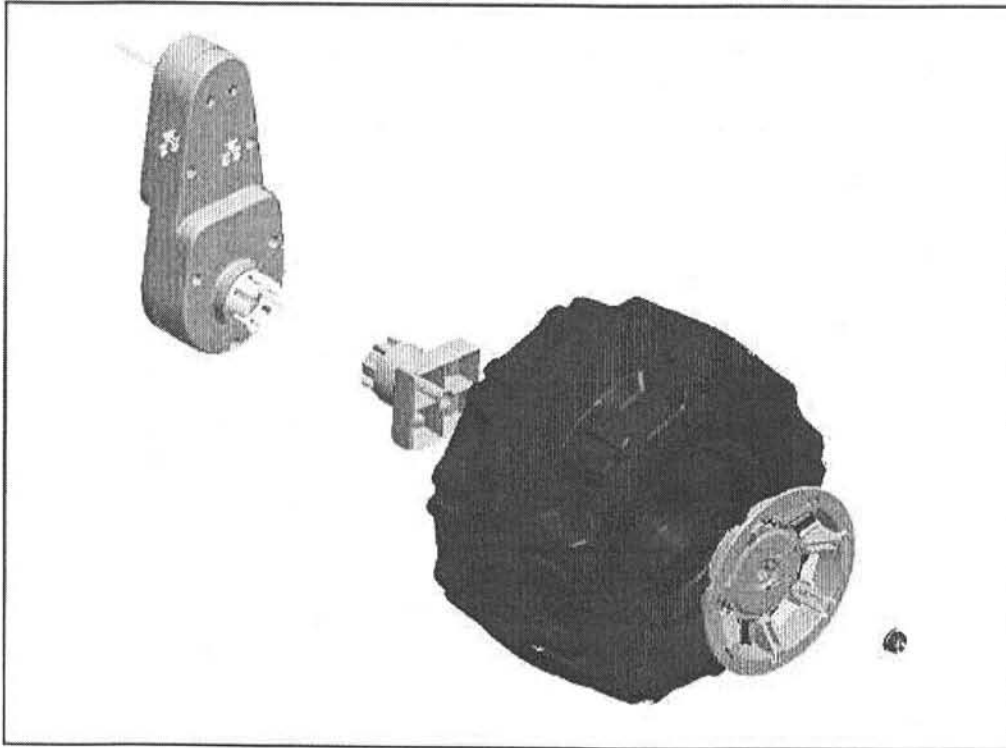
### **Tools needed**

- Pliers
- Hammer
- Capnut Tool

### **Unplug and remove battery**

- Remove capnuts, pull off hubcaps and wheel / bushing assembly from axle
  - Remove axle
  - Put capnut on one side of new axle
  - Put one hubcap and wheel / bushing assembly on axle
  - Slide axle and wheel assembly into gearbox, body, and into other gearbox
  - Put other wheel / bushing assembly on axle
  - Put on hubcap
  - Put on capnut
- Replace battery

## CHANGE | Gearbox



### Additional parts needed

- Capnut

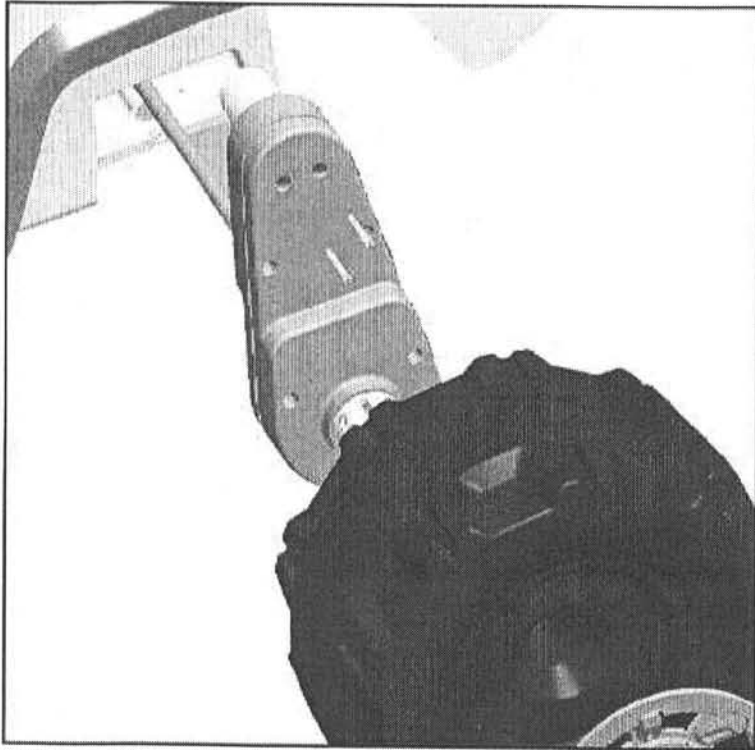
### Tools needed

- Pliers
- Hammer
- Capnut Tool
- Soldering Iron
- Solder

### Unplug and remove battery

- Remove seat
- Unsolder wires from motor(s) / gearbox(s) assembly to be changed
  - Remove wires from motor(s)
  - Remove capnut, pull off hubcap and wheel / bushing assembly from axle
  - Remove axle
  - Remove gearbox(s) assembly
  - Put new gearbox(s) assembly in place
  - Put one hubcap and wheel / bushing assembly on axle
  - Slide axle and wheel assembly into gearbox, body, and into other gearbox
  - Put other wheel / bushing assembly on axle
  - Put on hubcap
  - Put on capnut
- Solder wires into motors
  - Red and black to passenger side motor
  - Red wire to red dot on motor
  - White with red stripe and black to driver side
  - White with red stripe to red dot on motor
- Replace battery

## **CHANGE** | Motor Screws and Washers



### **Additional parts needed**

- Capnut

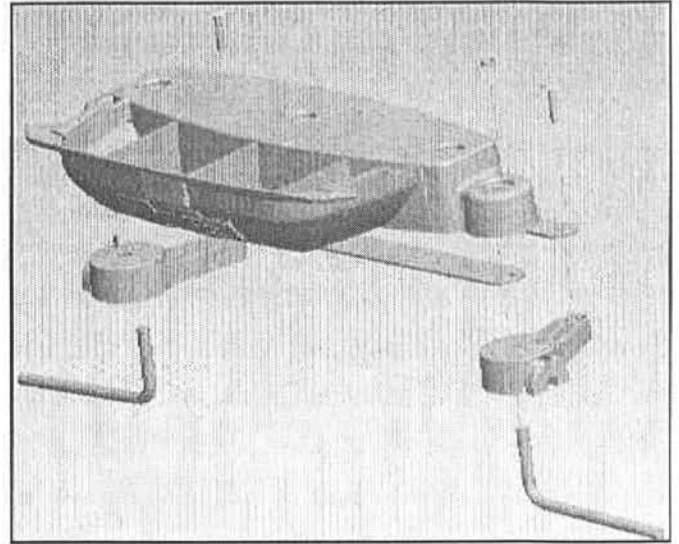
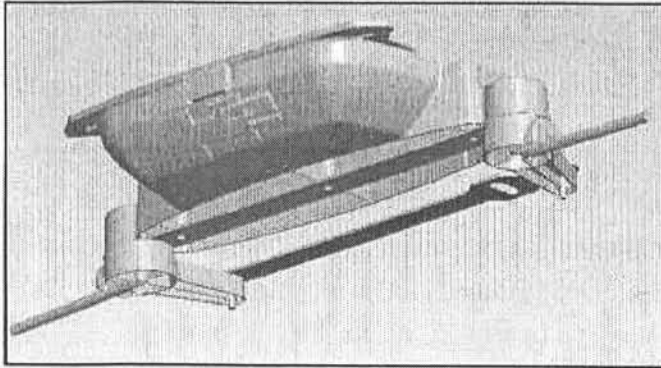
### **Tools needed**

- Pliers
- Hammer
- Capnut Tool
- #1 Phillips screwdriver

### **Unplug and remove battery**

- Remove seat
  - Remove capnut, pull off hubcap and wheel / bushing assembly from axle
  - Remove axle
  - Tip gearbox(s) assembly in
  - Remove 2 screws holding motor
  - Put washers on screws
  - Put screws in gear box assembly
  - Tighten screws M3 X .5 X 35 to 2.50 +/- 0.50 in-Lbs
- Put gearbox(s) assembly in place
  - Put one hubcap and wheel / bushing assembly on axle
  - Slide axle and wheel assembly into gearbox, body, and into other gearbox
  - Put other wheel / bushing assembly on axle
  - Put on hubcap
  - Put on capnut
  - Replace battery

## **CHANGE** | Steering Box, Front Axle, Steering Arm, Steering Link



### **Additional parts needed**

- Capnut

### **Tools needed**

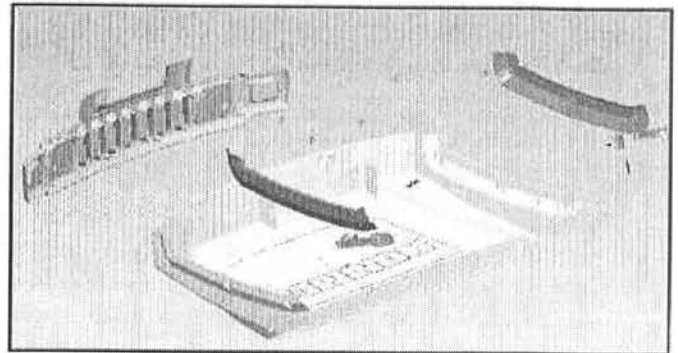
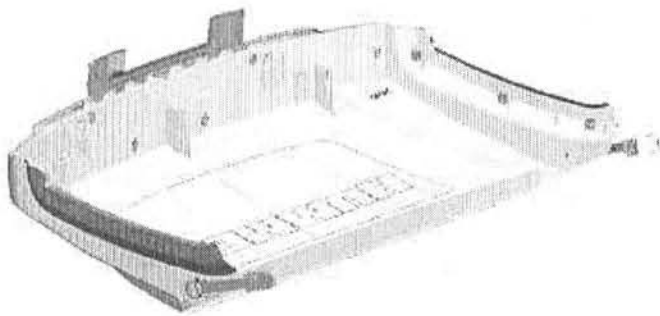
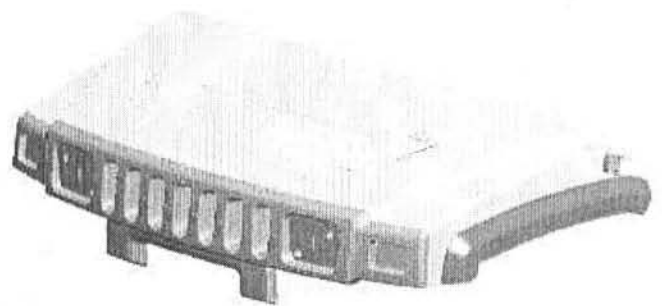
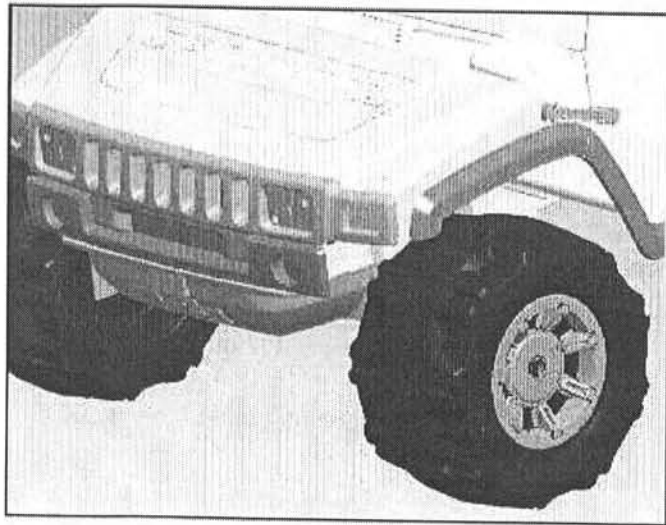
- Pliers
- Hammer
- Capnut Tool
- #2 Phillips screwdriver
- Slotted screwdriver

## **CHANGE** | Steering Box, Front Axle, Steering Arm, Steering Link

### **Unplug and remove battery**

- Unlatch hood and open 1 inch
  - Remove hood assembly by Pulling middle of grill forward and right
  - Remove front lower grill by prying top snap out of slot
  - Pull up to remove from lower snap
  - Remove steering wheel cap screw and cap
  - Remove steering wheel screws and steering wheel
  - Push up steering column axle
  - Remove pin
  - Push steering column axle down and remove
  - Remove 3 screws on front end
  - Remove 3 nylock nuts on front end
  - Pull off steering box assembly
  - Remove 3 bolts
  - Put on new steering box assembly
- Put In 3 screws
- Tighten screws - # 8-10 X .750 (3) to 15.00 +/- 1.00 in-Lbs.
- Put in 3 bolts 5/16 -18 X 2.75 (3)
- Put on 3 nylock nuts
- Tighten nuts 5/16 -18 (3) to 34.00 +/- 2.00 in-Lbs.
- Put on lower grill
- Push up steering column axle through collar
- Put in pin
- Push steering column axle down till pin is in collar
- Put on steering wheel
- Put in steering wheel screws
- Put on steering wheel cap
- Put on steering wheel cap screw
  - Put wheel / bushing assembly on axle
  - Put on hubcaps
  - Put on capnuts
  - Snap hood assembly onto lower grill
  - Replace battery

## CHANGE | Hood, Grill



### Additional parts needed

- Cladding screws

### Tools needed

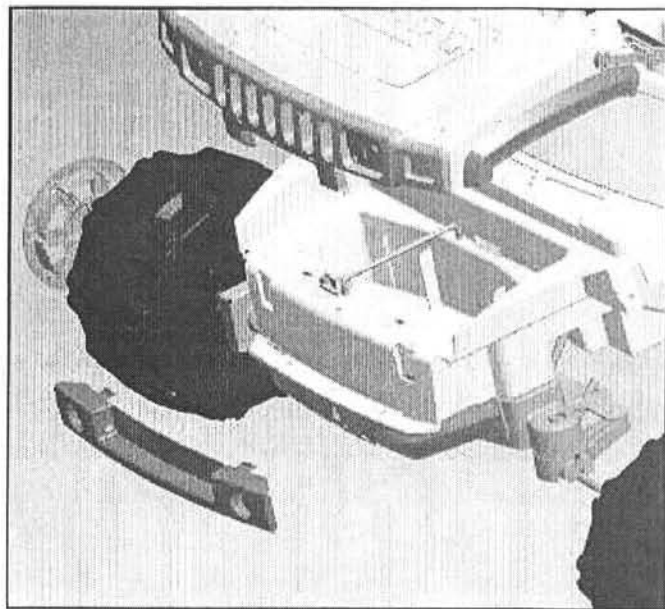
- #2 Phillips screwdriver

### Unplug and remove battery

- Unlatch hood and open 1 inch
  - Remove hood assembly by Pulling middle of grill forward and right
  - Remove 6 screws holding grill
  - Remove grill
  - Put on new grill
  - Put on 6 screws
  - Tighten screws # 8-10 X .375 washerhead (6) to 10.00 +/- 1.00 in-Lbs.
  - Snap hood assembly onto lower grill
- Replace battery



## **CHANGE** | Front Lower Grill



### **Additional parts needed**

- None

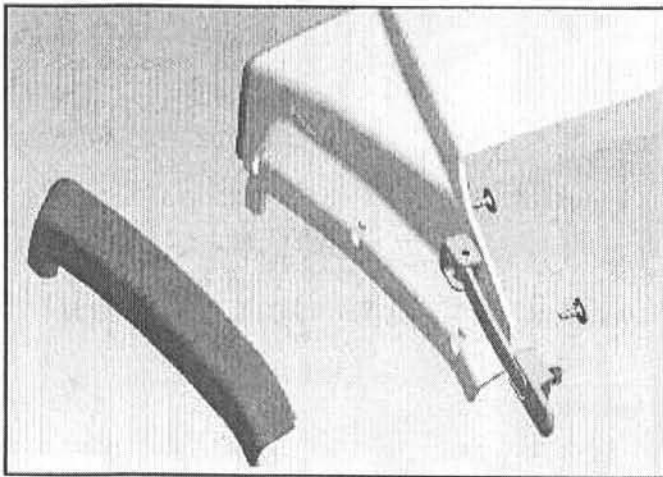
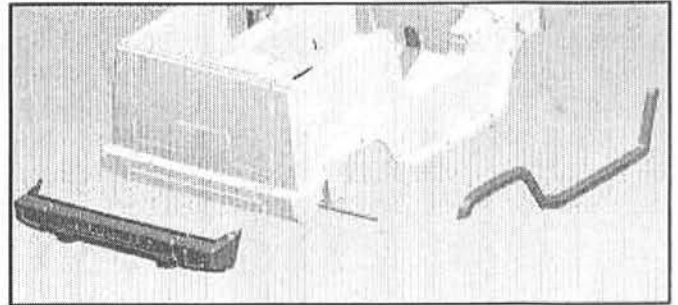
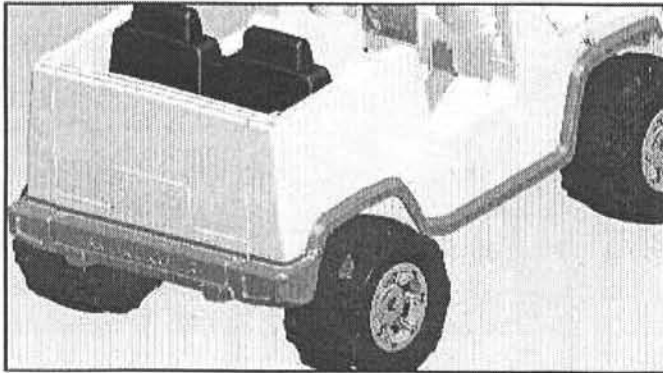
### **Tools needed**

- Slotted screwdriver

### **Unplug and remove battery**

- Unlatch hood and open 1 inch
  - Remove hood assembly by Pulling middle of grill forward and right
  - Remove front lower grill by prying snap out of slot
- Pull up to remove from lower snap
- Put on new lower grill
- Snap hood assembly onto lower grill
- Replace battery

## **CHANGE** | Rear Bumper / Body and Hood Side Cladding



### **Additional parts needed**

- Cladding screws

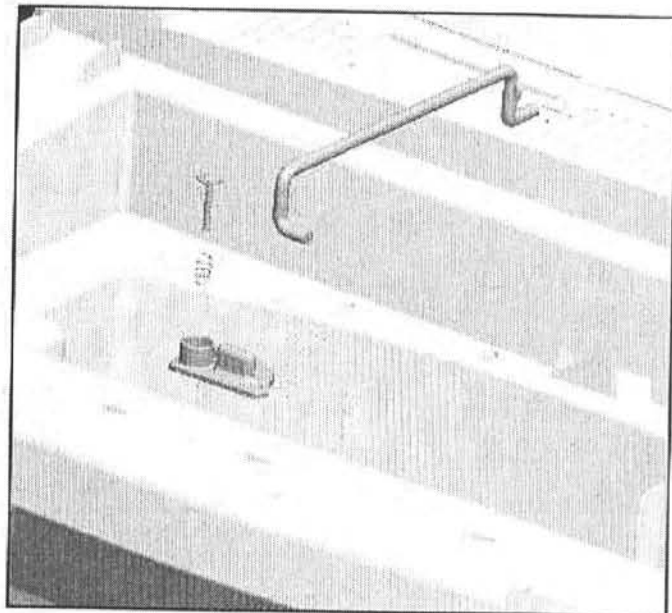
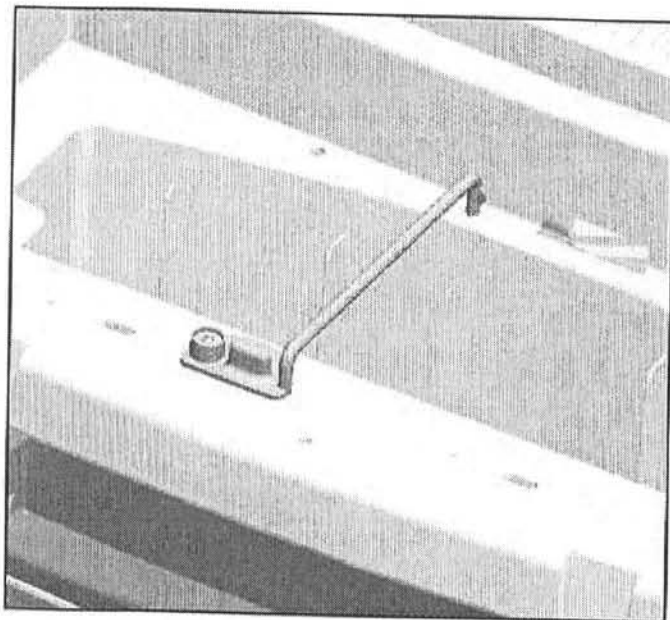
### **Tools needed**

- #2 Phillips screwdriver

### **Unplug and remove battery**

- Remove screws holding bumper / cladding
  - Remove bumper / cladding
  - Put on new bumper / cladding
  - Put on screws
- Tighten screws # 8-10 X .375 washerhead (6) to 10.00 +/- 1.00 in-Lbs.
- Replace battery

## **CHANGE** | Battery Clamp Lock



### **Additional parts needed**

- Screw and spring

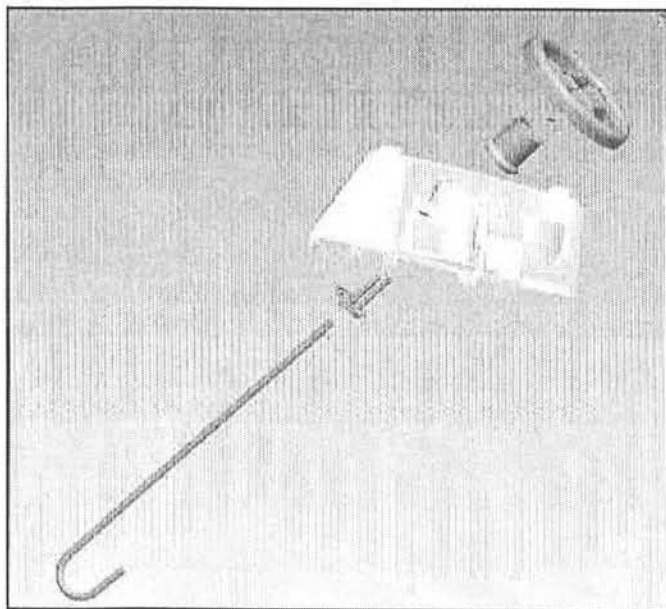
### **Tools needed**

- #2 Phillips screwdriver

### **Unplug and remove battery**

- Unlatch hood and open
  - Remove lock screw and spring
  - Remove lock
  - Put on new lock
  - Put on spring
  - Put on screw till head is flush with top of lock
  - Replace battery

## CHANGE | Steering Collar



### Additional parts needed

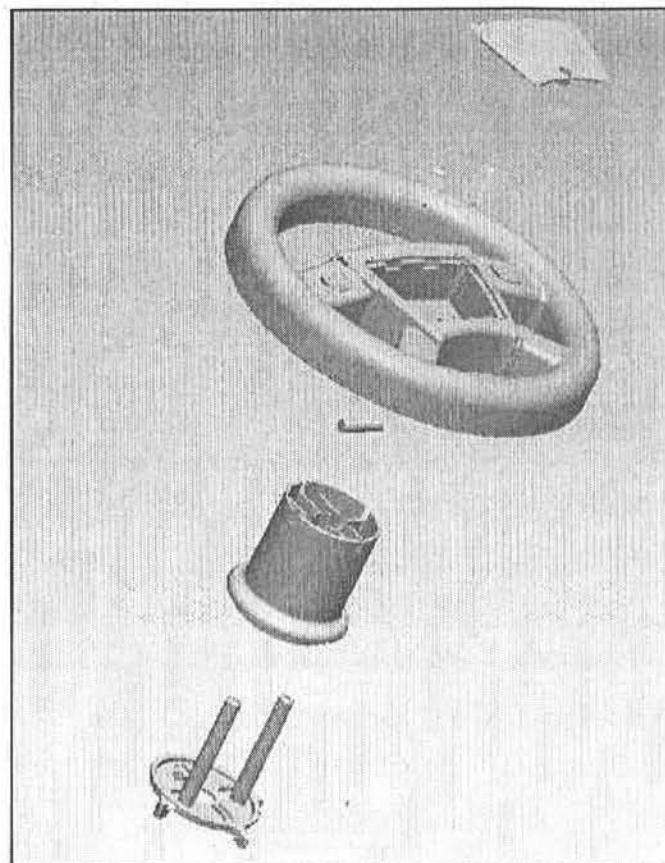
- None

### Tools needed

- #2 Phillips screwdriver

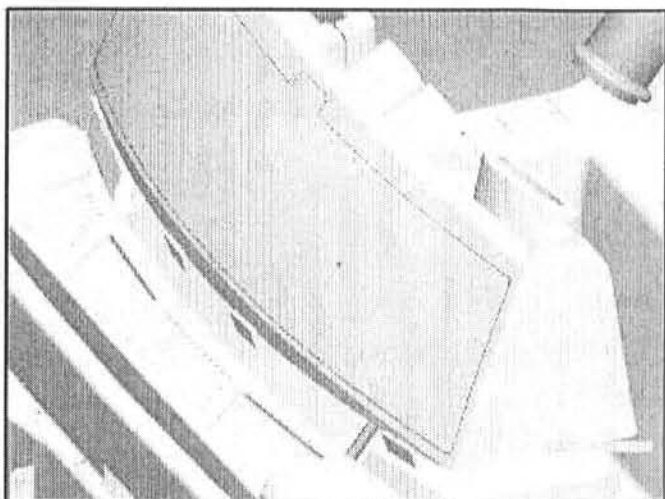
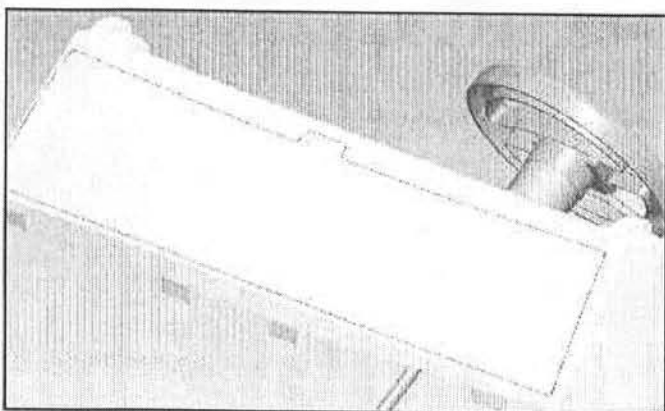
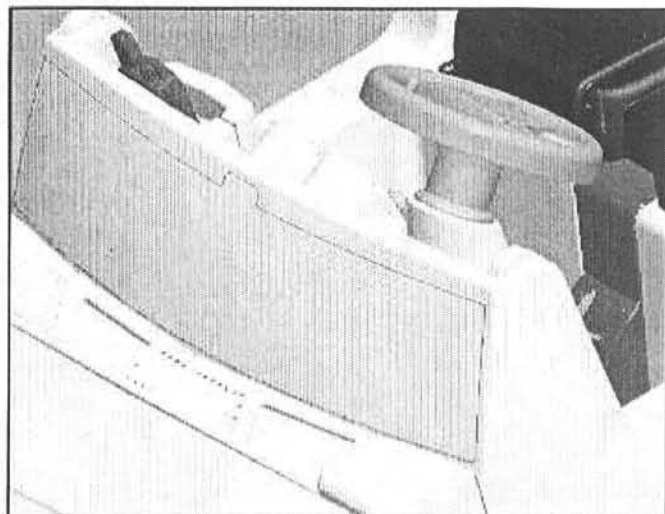
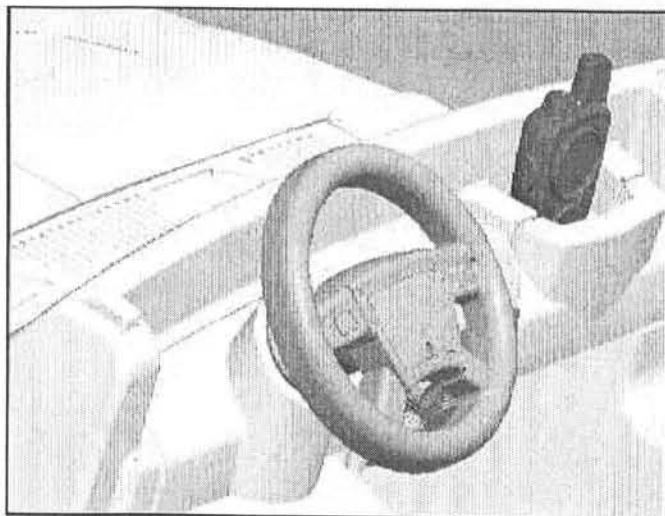
### Unplug and remove battery

- Remove steering wheel cap screw and cap
- Remove steering wheel screws and steering wheel
- Push up steering column axle
- Remove pin
- Push steering column axle down
- Remove collar screw
- Remove steering collar
- Remove steering collar bottom
- Put in new steering collar bottom
- Put in new steering collar
- Push together
- Put in collar screw
- Tighten screw # 8-10 X 2.50 washerhead (1) to 14.00 +/- 1.00 in-Lbs.
- Push up steering column axle through collar
- Put in pin
- Push steering column axle down till pin is in collar



- Put on steering wheel
- Put in steering wheel screws
- Put on steering wheel cap
- Put on steering wheel cap screw
- Replace battery

## CHANGE | Dash



### Additional parts needed

- None

### Tools needed

- #2 Phillips screwdriver

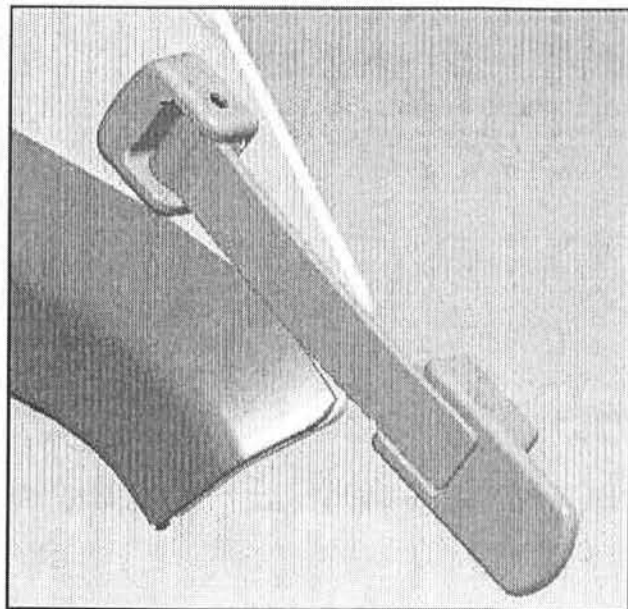
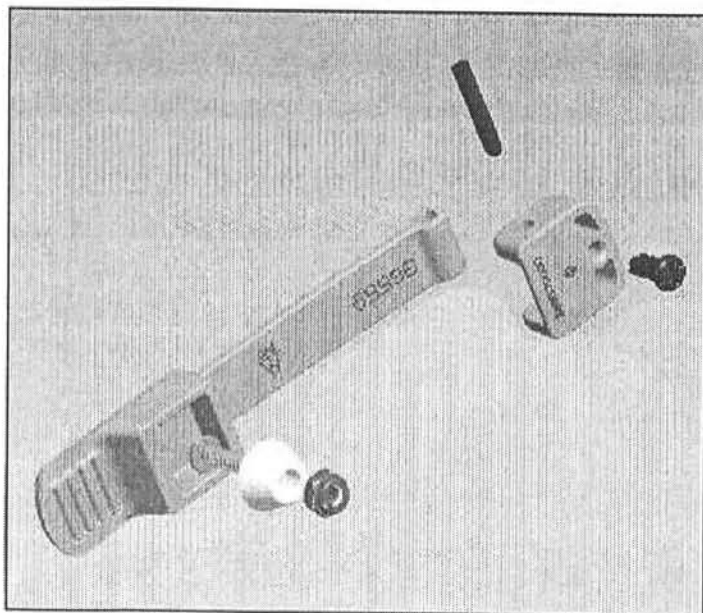
### Unplug and remove battery

- Remove steering wheel cap screw and cap
  - Remove steering wheel screws and steering wheel
  - Push up steering column axle
  - Remove pin
  - Push steering column axle down
  - Remove collar screw
  - Remove steering collar
- Remove steering collar bottom
- Remove 2 dash screws

- Pry dash snap out 4 places
- Snap in new dash
- Put in 2 dash screws
- Put in steering collar bottom
- Put in steering collar
- Push together
- Put in collar screw
- Tighten screw # 8-10 X 2.50 washerhead (1) to 14.00 +/- 1.00 in-Lbs.
- Push up steering column axle through collar
- Put in pin
- Push steering column axle down till pin is in collar
- Put on steering wheel
- Put in steering wheel screws
- Put on steering wheel cap
- Put on steering wheel cap screw
- Replace battery



## CHANGE | Hood Latch



### Additional parts needed

- None

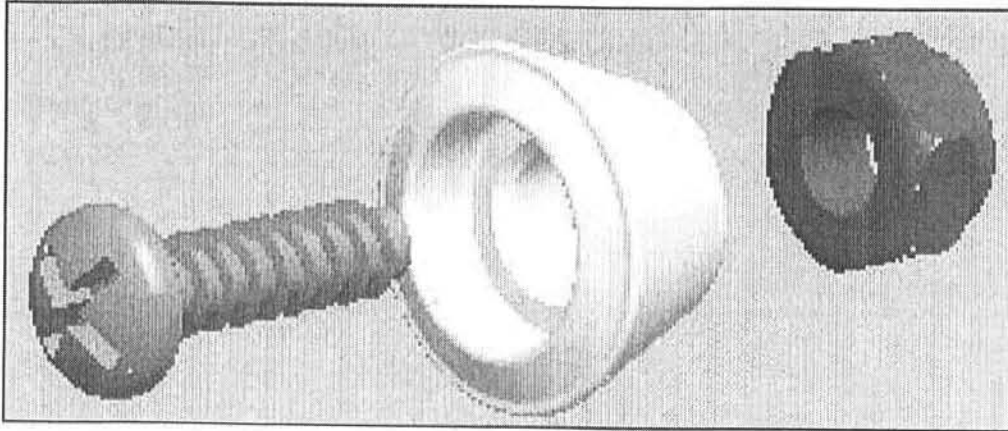
### Tools needed

- #2 Phillips screwdriver

### Unplug and remove battery

- Unlatch hood and open
- Remove screws holding latch assembly
- Put on new latch assembly
- Tighten screw # 6-10 X .375 (2) to 10.00 +/- 1.00 in-Lbs.
- Replace battery

## **CHANGE | Hood Latch Body Anchor**



### **Additional parts needed**

- None

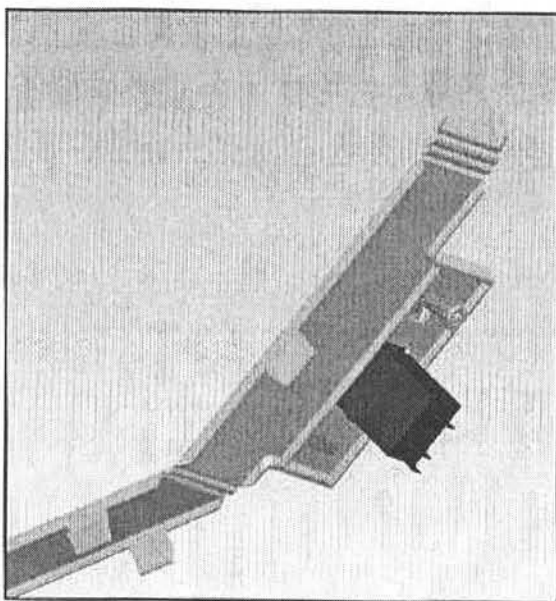
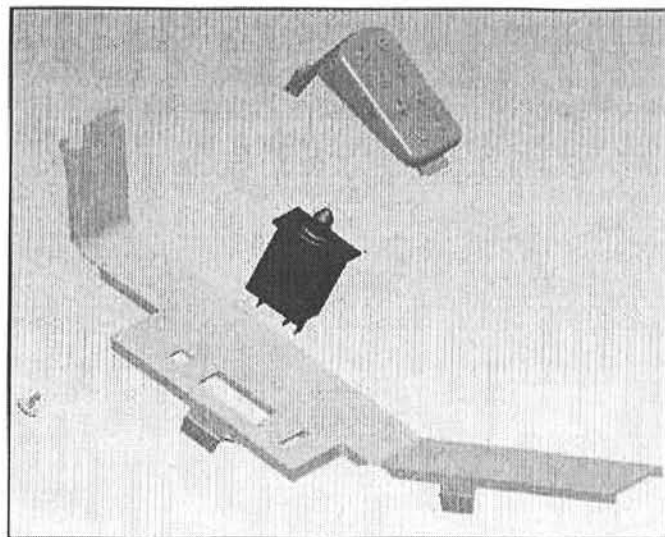
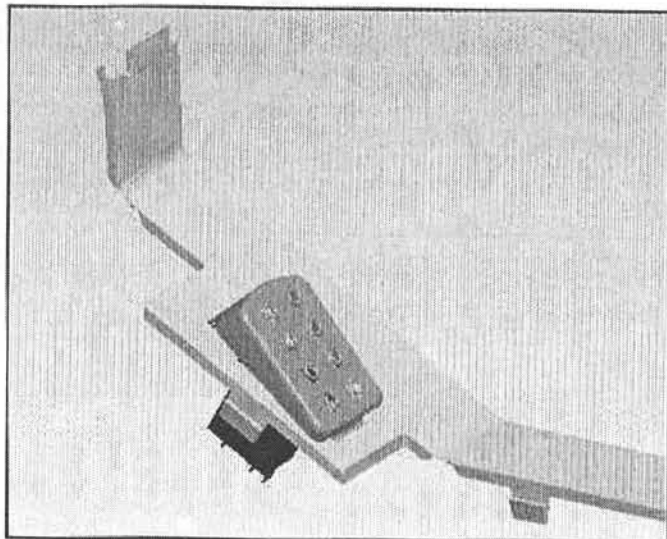
### **Tools needed**

- #2 Phillips Screwdriver
- Pliers

### **Unplug and remove battery**

- Unlatch hood and open
  - Remove nylock nut and screw holding anchor
  - Put screw in new anchor # 6-32 X .550 (2)
  - Put through body
  - Put on nylock nut
  - Tighten nuts # 6-32 (2) to 4.00 +/- 1.00
- Replace battery

## CHANGE | Foot Pedal



### Additional parts needed

- Cladding screw

### Tools needed

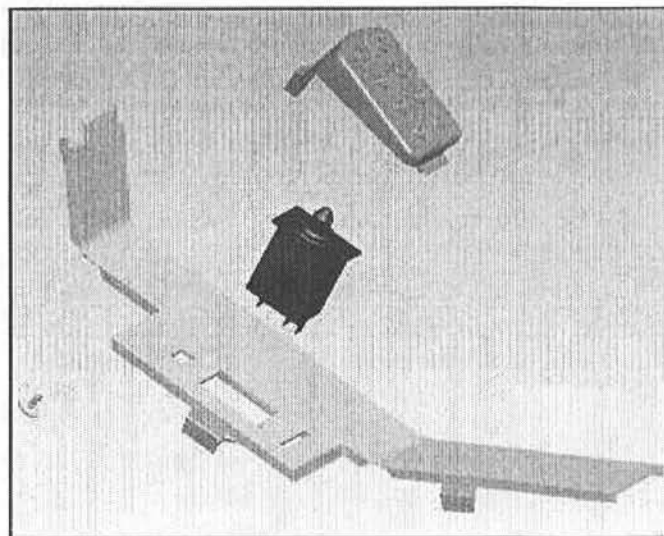
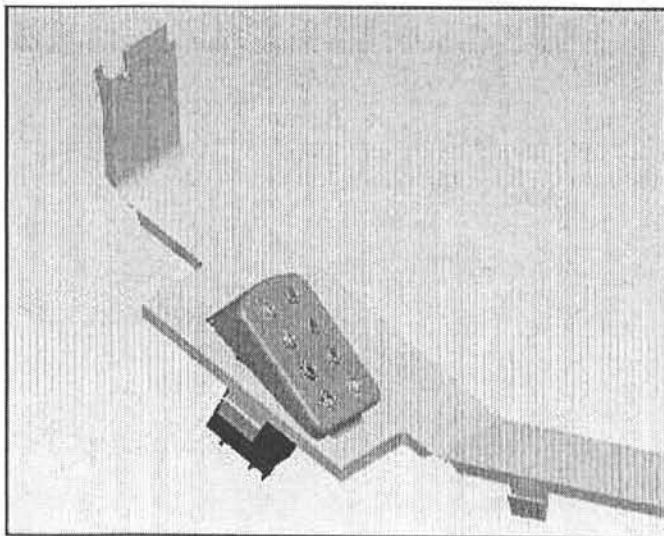
- Hammer
- #2 Phillips Screwdriver
- Slotted screwdriver

### Unplug and remove battery

- From underside using screwdriver
- Force 4 snaps through body for foot pedal housing assembly
- Turn over foot pedal housing assembly
- Remove screw
- Remove foot pedal
- Put new pedal on housing
- Put on screw
- Tighten screw # 8-10 X .375 to 6.00 +/- 1.00 in-Lbs.
- Put foot pedal housing assembly front in place
- Put foot pedal housing assembly 4 snaps in place
- Replace battery



## **CHANGE** | Foot Pedal Switch Assembly



### **Additional parts needed**

- None

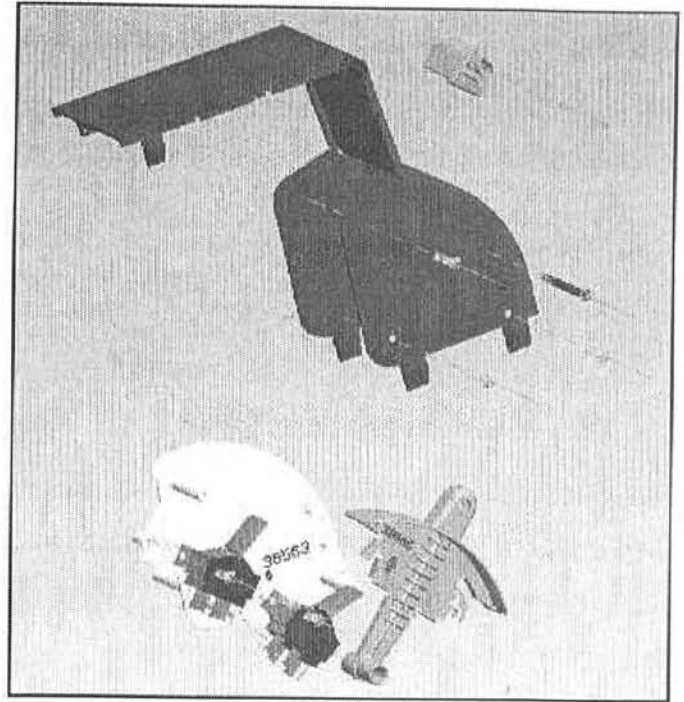
### **Tools needed**

- Hammer
- Slotted screwdriver

### **Unplug and remove battery**

- From underside using screwdriver
  - Force 4 snaps through body for foot pedal housing assembly
  - Turn over foot pedal housing assembly
  - Unplug wire harness from foot pedal switch
- Plug in wire harness to new foot switch assembly
  - Put foot pedal housing assembly front in place
  - Put foot pedal housing assembly 4 snaps in place
  - Replace battery

## **CHANGE** | Shifter Switch Assembly



### **Additional parts needed**

- None

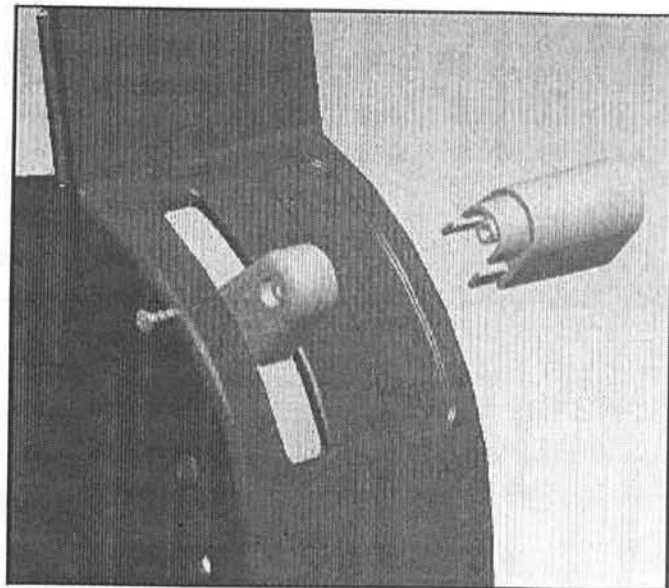
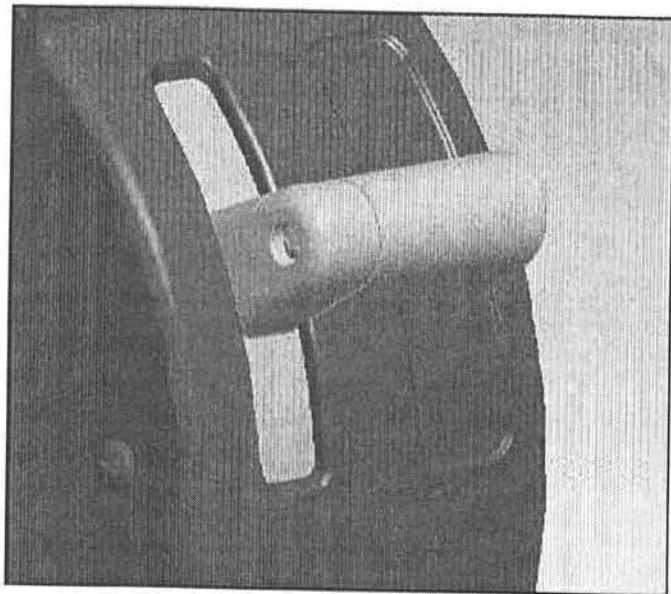
### **Tools needed**

- Hammer
- Slotted screwdriver

### **Unplug and remove battery**

- Remove seat
  - Pull up on back of shifter housing assembly to unsnap 2 back snaps
  - From underside using screwdriver
- Force 4 snaps through body for shifter housing assembly
  - Pull shifter housing assembly up
  - Pull switch assembly off wire harness
  - Put new switch assembly on wire harness
  - Put shifter housing assembly 4 snaps in place
  - Put shifter housing assembly 2 back snaps in place
- Put on seat
- Replace battery

## **CHANGE** | Shifter Handle



### **Additional parts needed**

- Screw

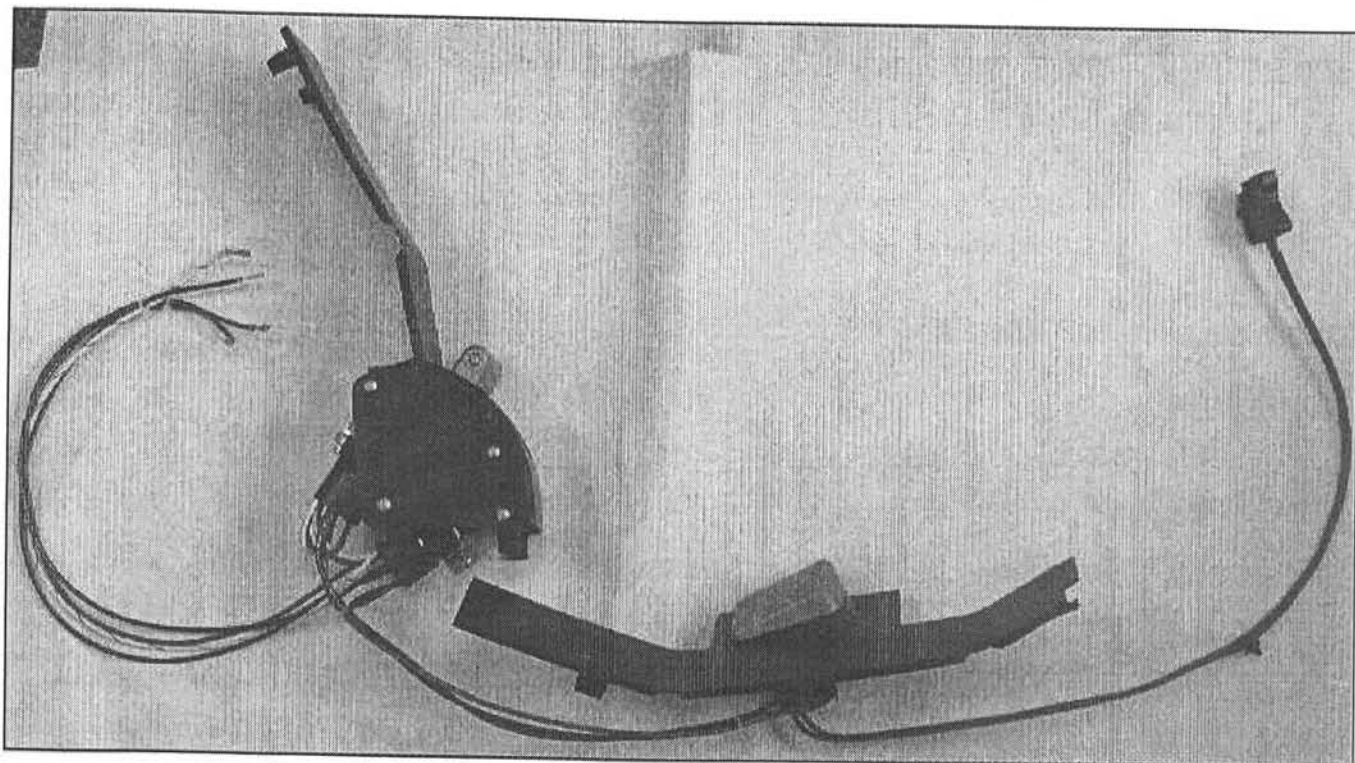
### **Tools needed**

- #2 Phillips screwdriver

### **Unplug and remove battery**

- Remove shifter handle screw
  - Remove shifter handle
  - Put new shifter handle on
  - Put shifter handle screw on
- Tighten screw # 6 – 10 x .500 to 9.00 +/- 1.00 in-Lbs.
- Replace battery

## CHANGE | Wiring Harness



### Additional parts needed

- None

### Tools needed

- Hammer
- Slotted Screwdriver
- Soldering Iron
- Solder

### Unplug and remove battery

- Remove seat
  - Unsolder wires from motor(s) / gearbox(s) assembly
  - Pull up on back of shifter housing assembly to unsnap 2 back snaps
  - From underside using screwdriver
- Force 4 snaps through body for shifter housing assembly
- Force 4 snaps through body for foot pedal housing assembly
- Pull shifter housing assembly up
- Remove wire harness and foot pedal and shifter assembly
- Put in wire harness and foot pedal and shifter assembly
- Put foot pedal housing assembly front in place
  - Put foot pedal housing assembly 4 snaps in place
- Put shifter housing assembly 4 snaps in place
- Put shifter housing assembly 2 back snaps in place
- Solder wires into motors
  - Red and black to passenger side motor
  - Red wire to red dot on motor
  - White with red stripe and black to driver side
  - White with red stripe to red dot on motor
- Put on seat
- Replace battery

# | Exploded View

