

To Use Your Own Design or Photo

Simply use the blank design as a guide to cut out your design or photo.



Actual Size



Visit our website: www.nsi-int.com

Ages 8 and up

Pins contains functional sharp points and edges. Adult supervision recommended.

Conforms to ASTM-D4236

The Amazing Button Maker™

No. 6368

Dear Customer,

We hope you enjoy our The Amazing Button Maker™ set. If you find that we have made an error or if something is missing or damaged, let us know so that we can correct the problem for you. Please include the following:

- Name of item
- Date of Purchase
- Purchase Price (please include sales slip)
- Model number
- Place of Purchase
- Brief description of the problem

Do not return the kit to the store where you purchased it, they will not have the replacement parts!

Send all correspondence to: **NSI International, Inc.**

105 Price Parkway,
Farmingdale, NY 11735-1318
Attn: Quality Control Department

REFILL PARTS FOR ITEM NO. 6368 The Amazing Button Maker™

	Amount of sets	Total Price
Button Backs & Fronts with Pin (20 each)	_____	\$ _____
Design Sheets (2 each)	_____	\$ _____
Acetate Circles (20 each)	_____	\$ _____

Order Total	Shipping Cost
\$ -	\$ 10.00
\$ 10.01	\$ 15.00
\$ 15.01	\$ 25.00
\$ 25.01	\$ 35.00
\$ 35.01	\$ 40.00
\$ 40.01	\$ 50.00
\$ 50.01	\$ 60.00

(Over \$60.00 please call)

Add shipping and handling: _____

Total amount enclosed: \$ _____

Allow two extra weeks for check processing

We also accept Visa or Mastercard

Name of card _____ Exp. date _____

Card No. _____

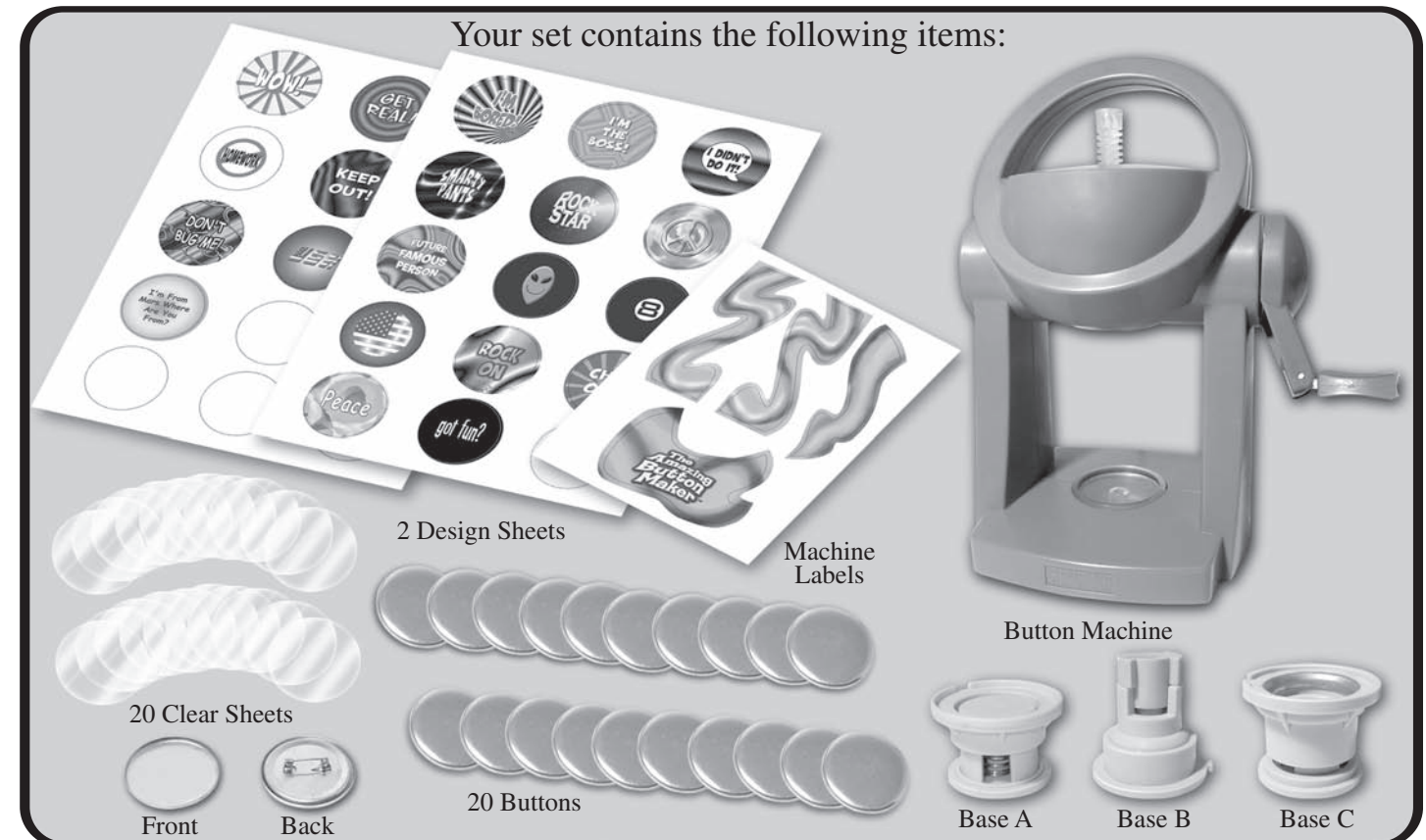
Signature _____

Mail this form with check, money order or credit card information to: **NSI International, Inc.**
105 Price Parkway
Farmingdale, NY 11735-1318

Mailing label: Please print clearly

Name _____
Street _____
City _____
State _____ Zip _____

Your set contains the following items:



INSTRUCTIONS

Step ①

Add decorative labels to machine. (See box for design placement)

Step ②

Look at the button designs and choose the one you want to make. They are perforated, so gently remove from the sheet.

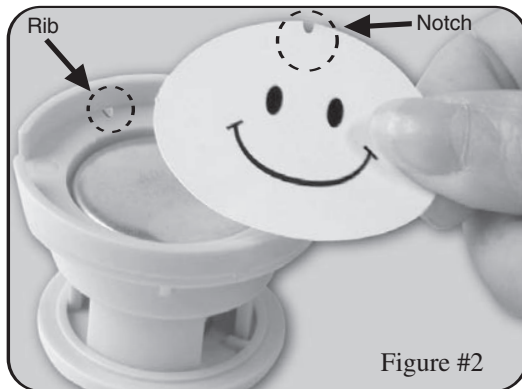
Step ③

Place the button top (figure #1) onto the Base marked "A", facing up.



Step ④

Place the design sheet on top, facing up, match the notch on the design sheet to the rib on Base "A" (figure #2).



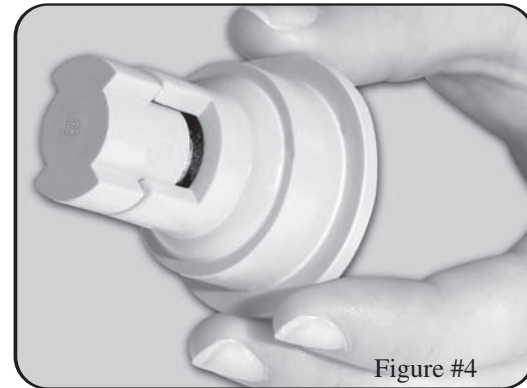
Step ⑤

Place the round acetate sheet on top (figure #3).



Step ⑥

Take the base marked "B" and twist up (figure #4).



Step ⑦

Place Base "B" onto the top of Base "A" aligning the tag on Base "B" to the notch on Base "A" (figure #5).

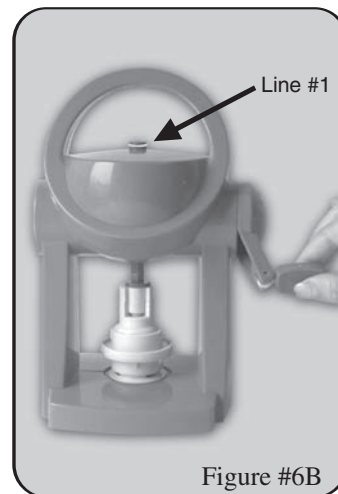


Step ⑧

Next, place onto base of Button Maker inside round indented space, making sure it lays flat.

Step ⑨

Turn handle down (clockwise) (Figure #6A) until the rod reaches line #1 (Figure #6B).



Step ⑩

Turn handle up all the way (counter-clockwise).

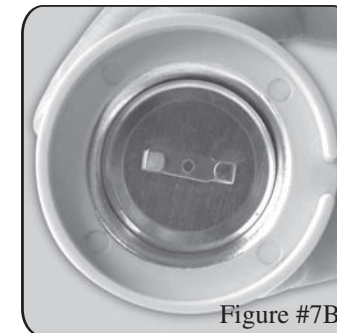
Step ⑪

Remove Bases "A" and "B".



Step ⑫

Place button bottom on Base "C" with pin side down (figure #7A). Pin direction should follow groove on Base "C" (figure #7B).



Step ⑬

Place Base "B" on top of Base "C" aligning the tag on Base "B" to the notch on Base "C".

Step ⑭

Next, place onto the base of the Button Maker inside round indented space, making sure it lays flat.

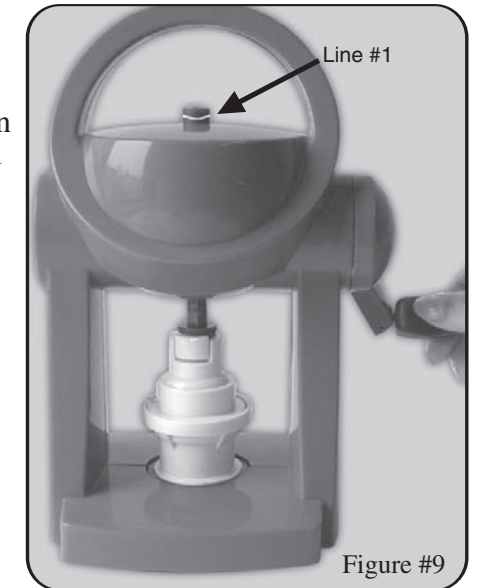
Step ⑮

Take Base "B" and twist 1/4 of the way (figure #8).



Step ⑯

Turn handle down (clockwise) until the rod reaches line #1 (figure #9).



Step ⑰

Turn handle all the way up (counter-clockwise).

Step ⑱

Remove your completed button!

