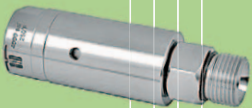
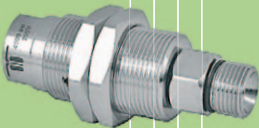
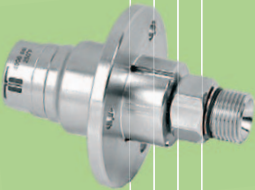
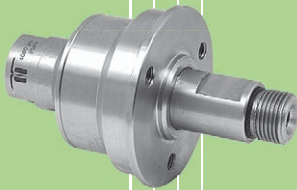


DY-Series

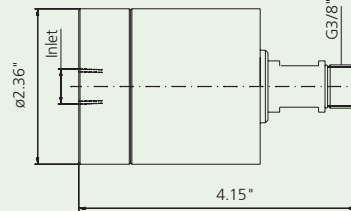
-High Rpm Swivels



High RPM Swivel features reinforced self-lubricated stainless steel ball bearings and dual spring-based carbide seals for long-lasting operation under tuff conditions.

DYT

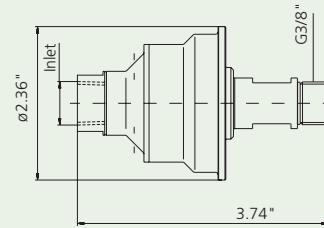
Inlet	Part No.
1/4" NPTF	59.063
3/8" NPTF	59.163
<i>Mosmatic Surface Cleaner</i>	
59.253	



-250° F
-5000 psi
-2000 r.p.m.
Weight: 3.5 lbs

DYC

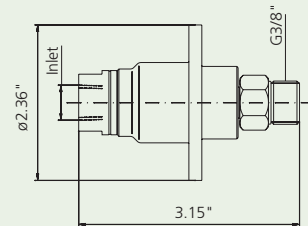
Inlet	Part No.
1/4" NPTF	55.063
3/8" NPTF	55.163
<i>Mosmatic Surface Cleaner</i>	
55.253	



-250° F
-5000 psi
-2000 r.p.m.
Weight: 1.3 lbs

DYF

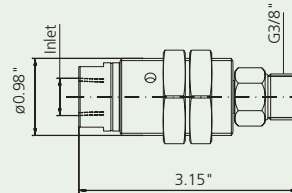
Inlet	Part No.
1/4" NPTF	58.063
3/8" NPTF	58.163
<i>Mosmatic Surface Cleaner</i>	
58.253	



-250° F
-4000 psi
-2000 r.p.m.
Weight: 0.85 lbs

DYG

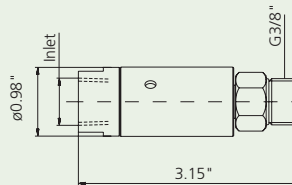
Inlet	Part No.
1/4" NPTF	57.063
3/8" NPTF	57.163
-	-



-250° F
-4000 psi
-2000 r.p.m.
Weight: 0.65 lbs

DYL

Inlet	Part No.
1/4" NPTF	56.063
3/8" NPTF	56.163
-	-



-250° F
-4000 psi
-2000 r.p.m.
Weight: 0.45 lbs

Seal Kit for all DY- Swivels
Conversion Kit

Part No. 36.906
Part No. 55.903

Distributed by:

strength grade