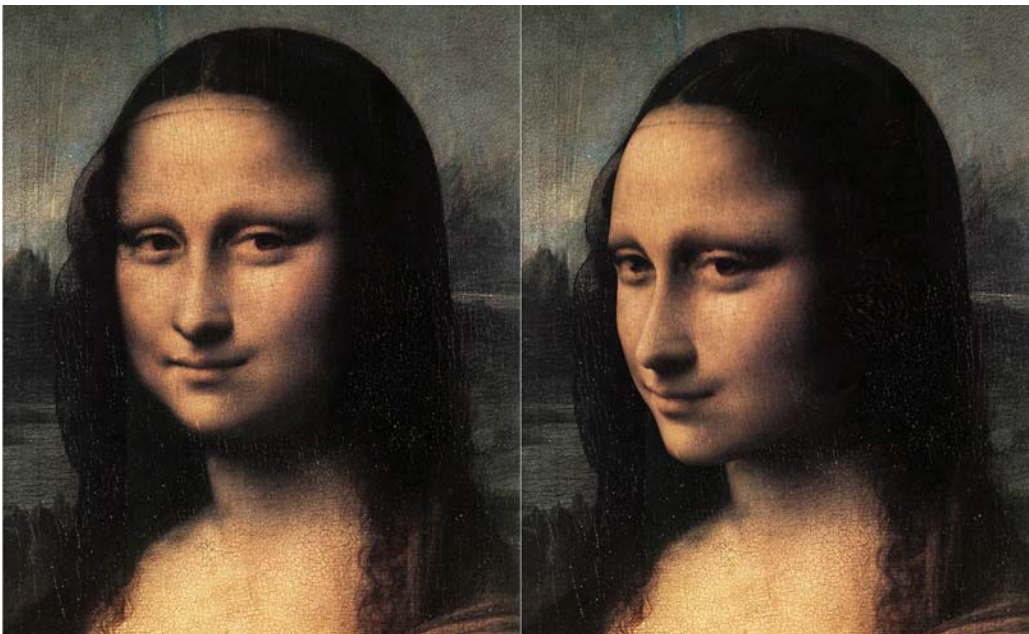


## FaceShop Photoshop Plug-in Released

San Francisco, November 25, 2007 – Abalone LLC announced that it started to ship its new software **FaceShop Photoshop Plug-in**. Developed by Pantomat Ltd of Budapest, Hungary, the plug-in works with older Photoshops (Photoshop 6 and up), Photoshop Elements and the new CS3 Extended.

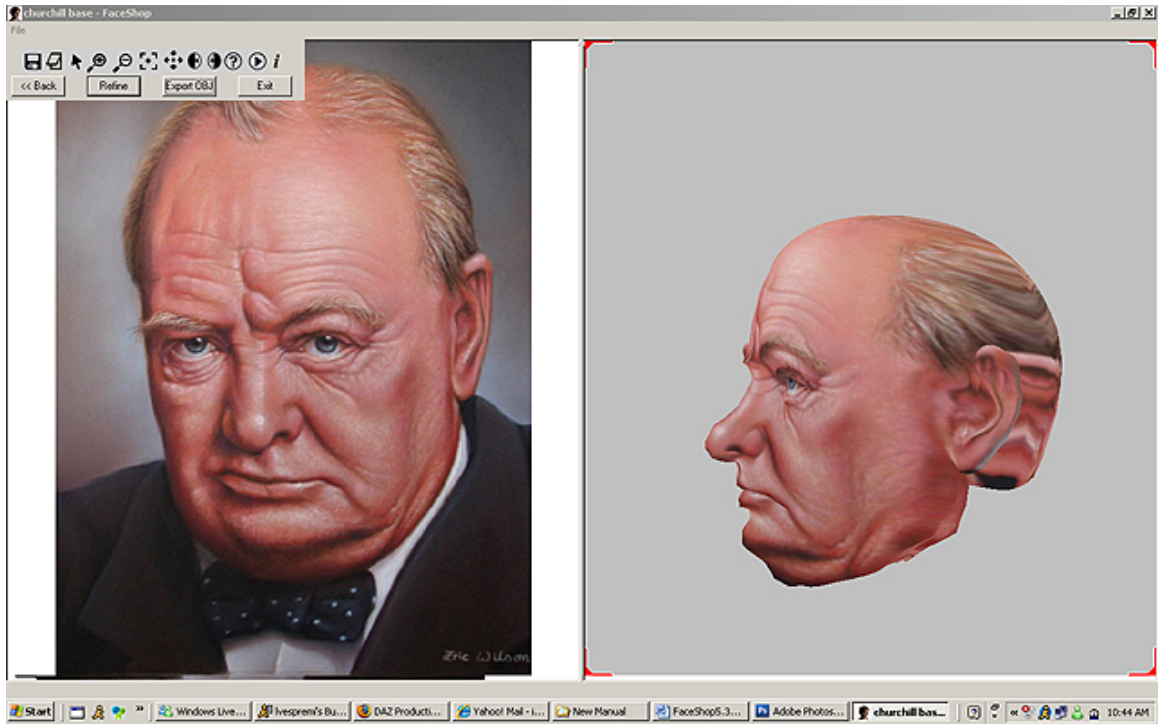
**FaceShop Photoshop Plug-in** operates as a filter. The user selects a face or portrait via the selection rectangle in Photoshop and launches the FaceShop 2D or 3D filter. The filter works with a two-step process; in step one the user places dots on significant places of the face (forehead, corner of eyes, mouth, etc.) Once completed, this step aligns a 3D head called TempMan to the same angle as the photo. In the second step the user draws a few curves on the photo to denote the eyebrows, the shape of the mouth and nose. Once finished, FaceShop presents a 3D face that looks like the original photo. This 3D face can be rotated around until the right view is found.

The selected view is then transferred back into Photoshop and pasted as a new layer on the original photo.



**FaceShop Photoshop Plug-in** also works with the new Adobe CS3 Photoshop's 3D capabilities. Used with CS3 FaceShop places a 3D object into Phtoshop's 3D layer. Users can rotate, size the head in Photoshop until they change the insert into a 2D image.

One of the unique new capabilities of **FaceShop Photoshop Plug-in** is the new "Refine" feature. Using "refine" elements of the photo that are not apparent in the original, such a sprofiles can be edited and made more realistic.



FaceShop Photoshop Plug-In as available for \$49.95 at Amazon, DAZ, Renderosity and other stores. For more information please visit [www.abalonellc.com](http://www.abalonellc.com) to download 15-day trial software or watch demo videos.