

## Large Billet Cup Holder Bezel Installation

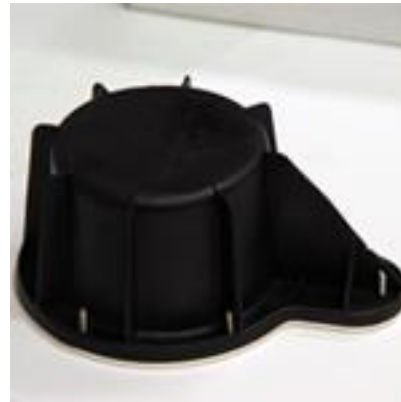
1. Make sure you have the hardware seen here. 6 allen head screws, one drill bit and one allen key.



2. Using the bezel as a template mark the locations to drill holes for the allen head screws. Using the included drill bit drill holes into the rubber cup holder.



3. Put the bezel in place then push each of the allen head screws through the rubber. The rubber will hold the screws in place and should look like this.



4. Bezel installed.

