

REVISION HISTORY		
REV	DESCRIPTION	DATE

OUTPUT RATIOS

Ratio between High and Low gears: 256:1

FINAL STATE, w/ 4520 GEARS

Low Gear: 24.0:1

High Gear: 9.4:1

FINAL STAGE w/ 48 & 17 TOOTH GEARS

Low Gear: 30.1:1

High Gear: 11.8:1

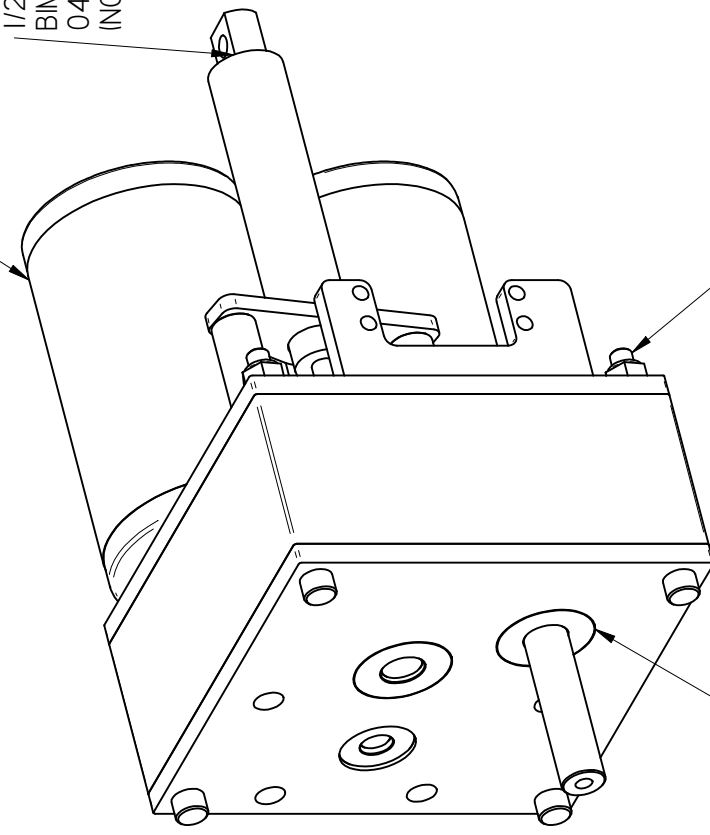
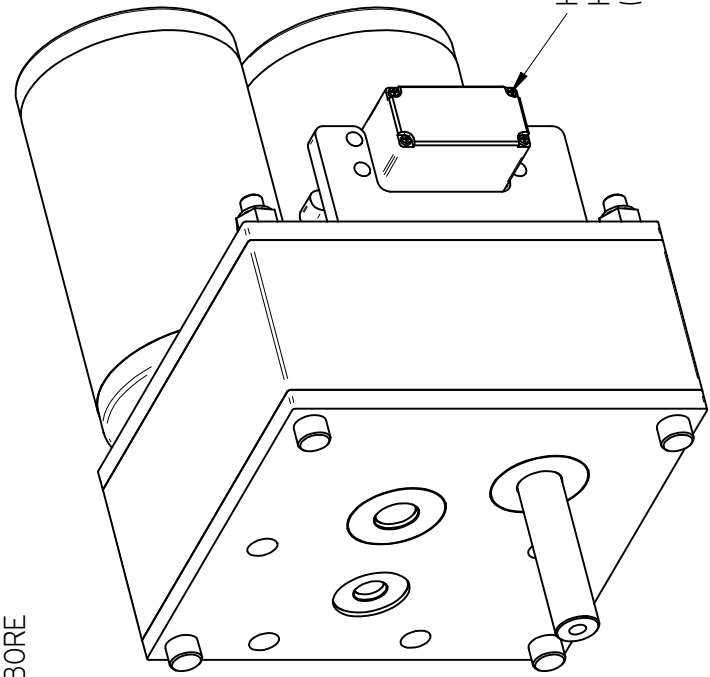
2 (OR 1) SMALL CIM MOTORS
(NOT INCLUDED)

1/2" STROKE, 3/4" BORE
BIMBA CYLINDER
04.5-DP
(NOT INCLUDED)

1/4-20 x 3"
MACHINE SCREWS

SEALED, FLANGED
BALL BEARINGS

HITEC SERVO
HS-322HD
(INCLUDED)

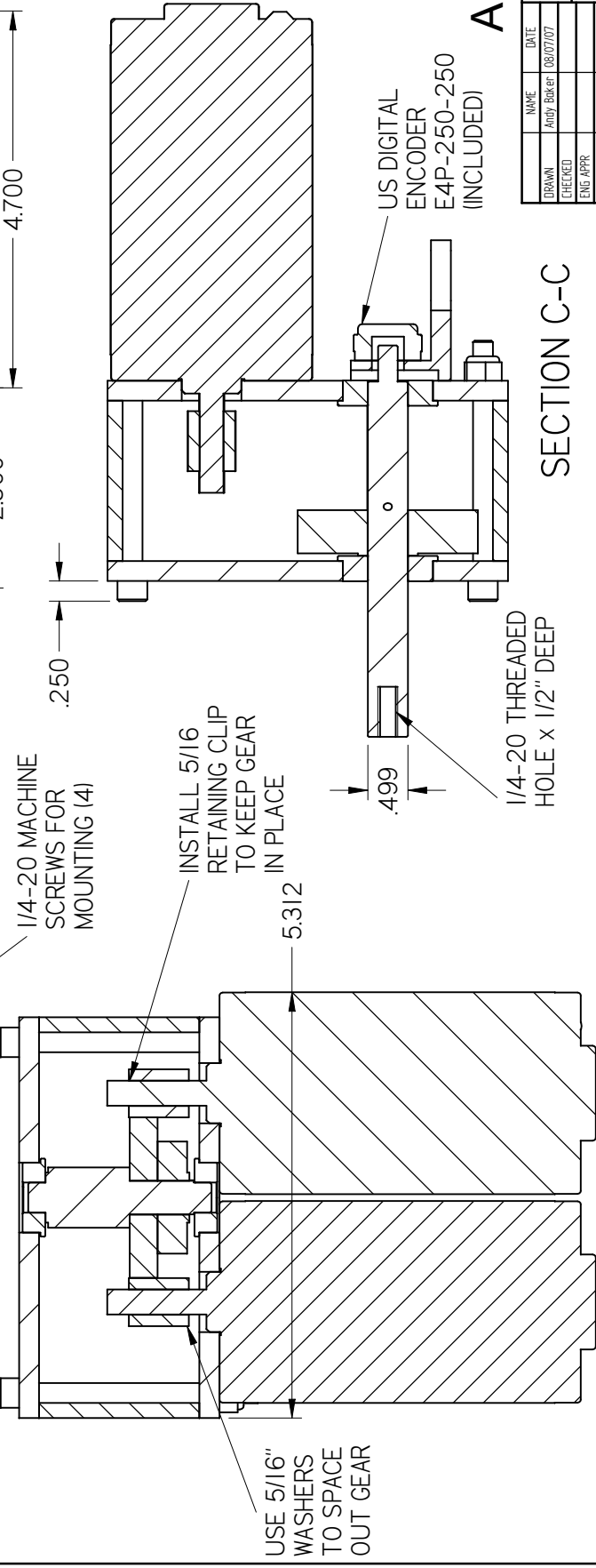
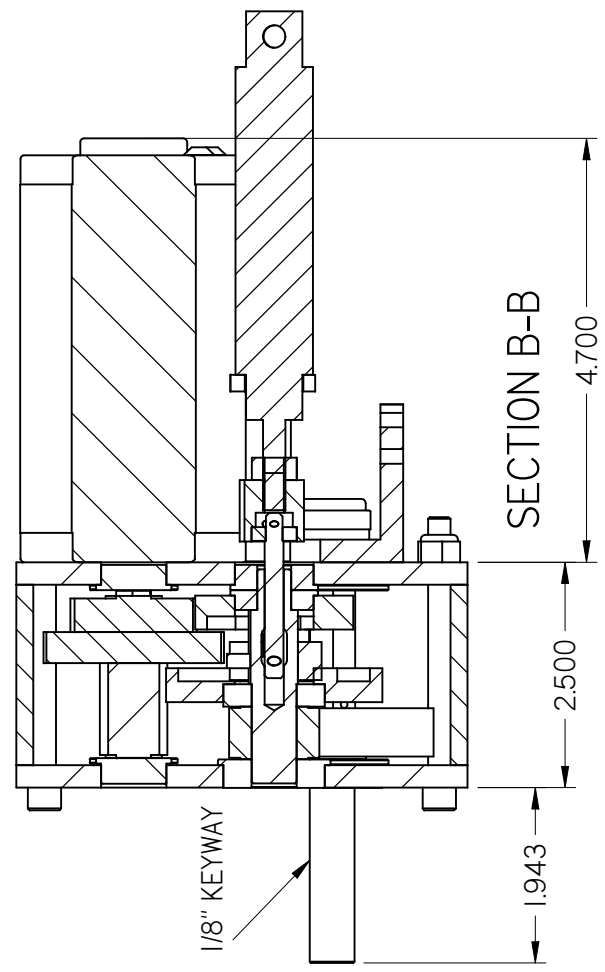
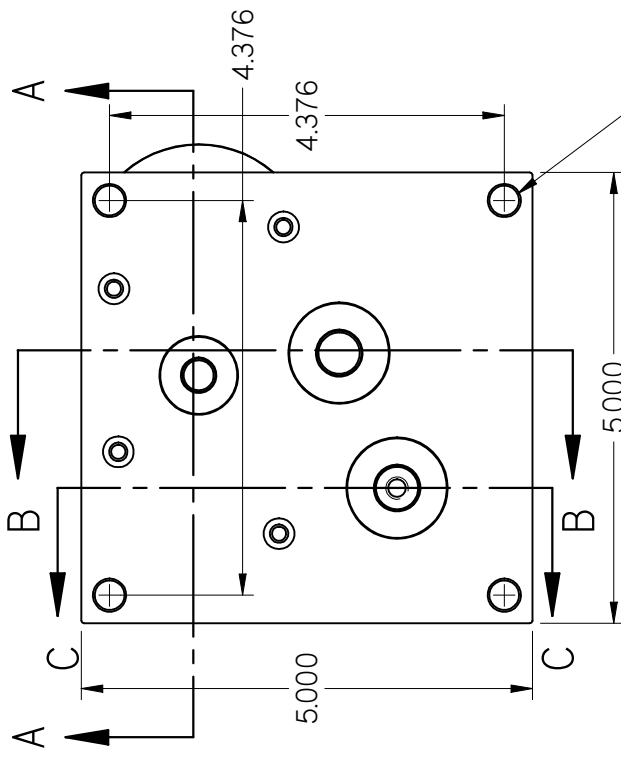


AndyMark.biz

DRAWN	NAME	DATE	SOLID EDGE EDS-PLM SOLUTIONS Super Shifter
CHECKED	Andy Barbet	03/07/07	
ENG APPR			
MGR APPR			
UNLESS OTHERWISE SPECIFIED DIMENSIONS ARE IN INCHES ANGLES ±0.5° 2 PL ±0.013 PL ±0.005			SIZE: 1.000 0.000 AZ: Super_Shifter_asm REV: 1 FILE NAME: super-shifter_asm.dft SCALE: SHEET 1 OF 3

HARDWARE FOR BOTH THE SERVO
AND THE PNEUMATIC SHIFTING
OPTIONS ARE INCLUDED, EXCEPT
FOR THE AIR CYLINDER

REVISION HISTORY		
REV	DESCRIPTION	DATE



AndyMark.biz

NAME	DATE	SIZE	REV
ANDY BARBER	03/07/07	AZ	1
CHECKED			
ENG APPR			
MGR APPR			

SOLID EDGE	
EAS-PLM SOLUTIONS	
Super Shifter	
Super_Shifter_asm	
Super_Shifter_assembly	
FILE NAME	Super_Shifter_assembly
SCALE	2 PL ±0.013 PL ±0.005
WEIGHT	
SHEET	2 OF 3

Shown as a pneumatic shifter. Motor's and pneumatic cylinder not included with product.

