

everySeason
P R O D U C T S



SnoCobra Ski System

User's Manual



Every Season Products
1-866-377-0045
PO Box 236
697 Kelly Ave
Dresser, WI 54009

www.snocobra.com

WARNING: Before installation and use, read entire manual, especially the safety precautions and instructions on pages 3 – 7.

Precautionary Warnings

Understanding Warnings:

This page, along with pages 3 – 6 identify safety symbols and signal words that appear in this manual and in the safety labels attached to the product.

These warnings are meant to alert operators to the potential hazards that may result in personal injury or damage to the SnoCobra Ski System or vehicle.

Become familiar with these warnings and their meanings. **Read this manual carefully.**

DANGER!

This **safety alert** indicates that if a hazard is not avoided, death or serious injury, or damage to the vehicle and the SnoCobra Ski System, **WILL** occur.

WARNING!

This **safety alert** indicates that if a hazard is not avoided, death or serious injury, or damage to the vehicle and the SnoCobra Ski System, **CAN** or **MAY** occur.

CAUTION!

This **safety alert** indicates that if a hazard is not avoided, minor to moderate injury, or damage to the vehicle and the SnoCobra Ski System **CAN** occur.

NOTICE!

This signal word indicates the chance or property damage if the instruction is not followed.

NOTE

A note alerts operators to important information or instructions.

Operator Warning Labels

With this manual, an additional operator safety label has been provided to attach to a vehicle equipped with the SnoCobra ski system. Attach the provided label to inform drivers of the SnoCobra equipped vehicle about safety instructions. Please follow the directions below and place the label on your vehicle in full view of the driver.

Directions

1. Find a location on the vehicles dash, fender, gas tank, or handle bars that provides a smooth surface area that has enough open space for the label. Be sure not to cover any warning labels that are already on your vehicle and in plain sight.
2. Clean the surface area with rubbing alcohol and dry for optimum label adhesion.
3. Apply the label to your vehicle. Do not allow air bubbles to become trapped behind the warning label.

Note: If for some reason any safety label is lost or removed, please contact Every Season Products (1-866-377-0045) or your local Dealer and we will provide you with new labels for free.

Table of Contents

Every Season Products

Precautionary Warnings	ii
Welcome	1
General Information	2
Warnings	3
Installation/Handling/Removal	3
Operation (Ski)	4
Operation (Vehicle)	4
Towing	6
Illustrated Parts Breakdown	7
Ski Adjustment Instructions	8
Section A) Saddle Adjustment Instructions	8
Section B) Tire Strap Adjustment Instructions	12
Installation Instructions	13
Removal	15
Operation	16
Before Riding	16
Protective Apparel	16
Trail Obstacles	16
Snow and Ice	17
Operating Speeds	17

Operating in Ruts	17
Operating in Icy Conditions.....	17
Towing or Winching	6
Operating in Reverse.....	18
Climbing, Turning, and Decending Hills	18
Maintenance	19
Maintenance Schedule	19
Replacing Parts.....	19
Composite Ski Care.....	19
Washing the Skis.....	21
Storage	20
Break-In Period	17
Torque Specifications.....	21
Warranty SnoCobra.....	22
Limited Warranty	22
Customer Remedies	22
NO OTHER WARRANTIES.....	22
LIMITAATION OF LIABILITY	22
NO LIABILITY FOR CONSEQUENTIAL DAMAGES.....	22
Every Season Products	22
Technical Support	23

Welcome

Thank you for selecting the SnoCobra Ski System by Every Season Products. This unique and patented design provides you with the ability to convert an existing summer vehicle into a highly efficient winter vehicle. Whether it is for recreation, utility, or performance the SnoCobra Ski System will extend your investment.

This Ski System is built for high performance on snow. To keep the skis in great condition only use them on snow or ice. SnoCobra Skis are not designed to be operated on anything other than snow or ice. Operating the SnoCobra Ski System on any other type of terrain besides snow or ice will void the manufacturer's warranty.

Every Season Products offers several products in the SnoCobra product line. Visit snocobra.com to view all products offered by Every Season Products.



Every Season Products
PO Box 236
Dresser, WI 54009
1-866-377-0045

General Information

Before use, read and understand the User/Owner's Manuals for the vehicle and the Track as we as for the SnoCobra ski system. These manuals contain important information concerning safety, installation, operation, maintenance, appropriate apparel, etc.

Every Season Products will not be responsible for any property damage caused by the failure to follow the instructions and safety precautions in these manuals.

SnoCobra Ski System.

The SnoCobra Ski System is designed for use on ATV's and UTV's only. Do not under any circumstances install the SnoCobra Ski System on any vehicle with a GVW of more than 2,000lbs.

Typical Installation

The installation instructions contained within this owner's manual are intended to provide a general overview of the SnoCobra Ski System installation. Installation for each front tire size of vehicle will differ, depending on the diameter, width, and tread of the front tire. Read and follow all the precautionary warnings in this manual.

Renderings and photos in this manual are for general reference. Your make and model of vehicle may differ from what is represented in this manual.

General

All figures, information or photos presented in this document are up to date at the time of publication. Every Season Products reserves the right to change this information without notice.

This document is an integral part of the SnoCobra Ski System. Pass this guide along to any new System owner.

Before use, consult legal authorities where you drive your vehicle equipped with the SnoCobra Ski System to ensure that you are aware of and follow all applicable laws and regulations.

Vehicle track systems are designed to reduce ground pressure and increase vehicle traction. However, during normal operating conditions, vehicle speed will be reduced, as compared to a wheeled vehicle, including when the SnoCobra Ski System is installed with a track system.

- This sheet only contains a summary of general safety warnings. You must read the entire Ski System's user manual to become aware of all of the manufacturer's warnings.

Safety Warnings

IMPORTANT: Failure to follow these safety precautions below could result in serious injury, death or property damage to the vehicle, SnoCobra Ski System or other property.

Installation/Handling/Removal/Maintenance

- Do not allow anyone that has not read and understood both this document and the ATV owner's manual to install or operate a vehicle equipped with the SnoCobra ski system.
- Reread your ATV's owner's manual as needed. Its contents remain useful after the SnoCobra ski system has been installed.
- When handling SnoCobra skis, do not place fingers on or around the cam lever or around the pinch point by the cam lever. Doing so could result in pinched fingers.
- Do not operate without a properly installed strapping system on each front tire.
- Do not operate without properly mounted and adjusted saddle brackets.
- If you have added any other after-market accessory or have modified your ATV, be sure they allow the SnoCobra ski system to be operated and to steer unobstructed.
- Before driving the ATV into the saddle for installation, remove any snow, material, or debris from the ski and saddle to ensure the tires are in proper contact with saddle.
- Check for properly installed and tightened fasteners (bolts, washers and nuts) when attaching SnoCobra ski system, and periodically during use.
- Do not leave any SnoCobra ski system components on the vehicle when it has been reconfigured to again be used with tires.
- Lack of proper maintenance can cause damage to the SnoCobra ski system and vehicle, and possible injury. Follow the recommended maintenance schedules described later in this manual.

Operation (Ski)

- Never put vehicle in 4WD with SnoCobra ski system installed. The front wheels cannot be powered or allowed to rotate when secured to the SnoCobra ski system.
- Never put vehicle in 4WD when only rear track system is installed. The rotation speed of the front wheels will be different from the rotation speed of the tracks. Doing so can cause both serious injury and damage to the vehicle and/or the track system.
- Do not drive vehicle in reverse with SnoCobra ski system installed.
- Only the rear brakes will work on a vehicle equipped with the SnoCobra ski system. The front wheels will not be rotating or in contact with the surface underneath the vehicle. Verify that the vehicles' rear brakes provide enough stopping power to safely operate the vehicle.
- Do not operate vehicle equipped with skis in any terrain except for snow or ice.
- Never put your feet or hands or tools and other objects on a moving SnoCobra ski system.
- When learning to operate a vehicle equipped with SnoCobra skis, it is important to take additional precautions until you are familiar with its operation. This includes driving at slower speeds, avoiding hazardous terrain, and being aware of any changes in vehicle or SnoCobra ski system performance.
- Do not operate the SnoCobra ski system with damaged parts.
- Keep hands and feet away from the SnoCobra ski system until (1) the vehicle is stopped, (2) the parking brake is engaged and (3) the vehicle's engine is turned off.

Operation (Vehicle)

- Vehicles equipped with the SnoCobra ski system should be operated only by trained, authorized personnel over the age of 16.
- Do not exceed 25 mph with the SnoCobra ski system installed.
- Respect rules, regulations, and laws in areas where you use the SnoCobra ski system attached to an ATV. Prior to use, review published regulations for ATV use.
- Always observe your ATV manufacturer's rules and regulations. Never exceed the vehicle manufacturer's operating recommendations.
- Allow more than the usual braking distance required to stop the vehicle when the SnoCobra ski system is installed. Periodically apply brakes while riding to eliminate ice buildup on brake components.
- When rear tracks are installed with the SnoCobra ski system, follow all track manufacturer's installation and operating recommendations.

- The driving characteristics of your ATV will change with the installation of the SnoCobra ski system. It is important to take the time to become familiar with the SnoCobra ski system and how it affects use of the ATV.
- Adapt your driving to surrounding conditions (weather, traffic, etc.) and according to your driving abilities.
- It is the driver's responsibility to verify that the engine air intake of the vehicle is well adapted to weather conditions and is not blocked by snow accumulation.
- When operating on smooth bare ice surfaces, loss of steering control may occur. Vehicle may have a tendency to wander and follow imperfections in the surface, which can cause unexpected lateral movement of the vehicle. Avoid areas of bare ice, and reduce ATV speed on hard snow or ice covered surfaces.
- When operating in obscured terrain (deep snow), beware of debris and hidden objects in the snow.
- Do not attempt to climb steep ascents. If the vehicle does not make it up a steep hill, it may begin to slide backwards. The SnoCobra ski system is not designed for use in reverse and thus, sliding backwards down a hill may cause loss of vehicle control. The skis may catch on the terrain while going backwards and cause the tips of the skis to rotate upwards and into the vehicle.
- It is not advised to attempt driving down steep descents. When coming down a steep descent, you have very limited braking power available. Only your rear tracks will have the braking power to slow the vehicle down. Steep descents can cause loss of vehicle control and/or cause the vehicle to roll over.
- If a steep descent cannot be avoided, it is not advisable to change direction while descending. This can lead to a serious malfunction of the vehicle's steering system and track systems or a roll over. During a steep descent, it is recommended to keep the skis pointed straight out in front of the vehicle. Do not begin turning the vehicle until it is in contact with flat ground.
- Do not attempt to side hill with your vehicle. This can lead to a serious malfunction of the vehicle's steering system and track systems or a roll over.
- Keep skis in contact with snow or ice surface at all times. Do not attempt to jump vehicles equipped with track and ski systems. Becoming airborne may allow the ski to freely rotate and can cause irreparable damage to the SnoCobra ski system, loss of vehicle control and personal injury.
- The SnoCobra ski system is not designed to withstand the forces that are associated with the vehicle becoming airborne. A vehicle equipped with the SnoCobra Ski System must never be used for the following activities: racing, rallies, jumps, stunts, acrobatics or any other extreme applications.

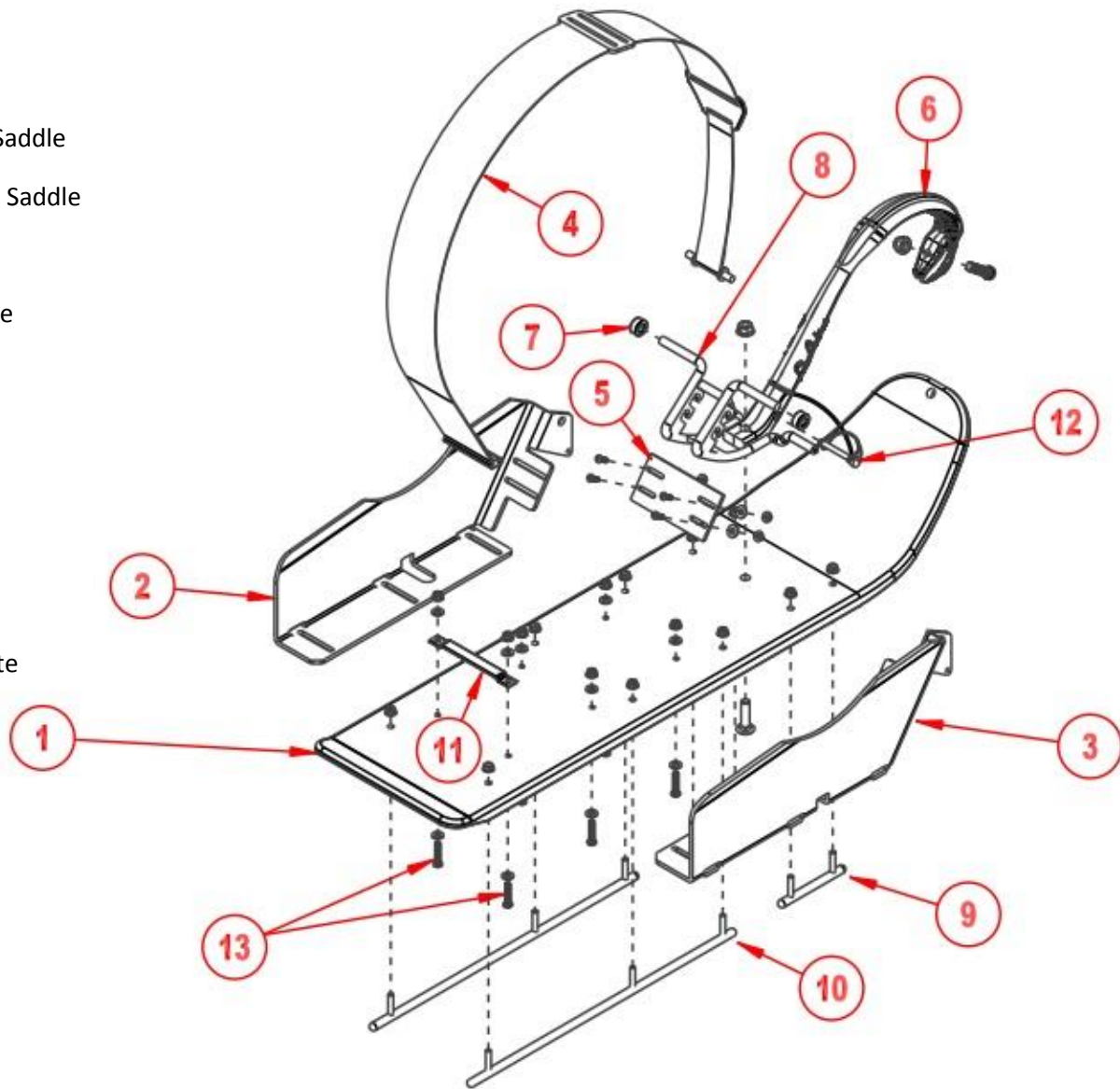
- The SnoCobra ski system is not designed to take excessive abuse. For example, the system is not designed to withstand the forces associated with hitting obstacles such as rocks, stumps, etc. without damage being caused to the ski system. It is not advisable to attempt to drive over any such obstacle, or over a steep ridge that could lodge itself between the front skis and the rear track systems and immobilize the vehicle. The best option is to bypass this type of obstacle. If this is not possible, insert a log or a stone near the obstacle to make slowly driving over it easier and safer.
- A vehicle equipped with the SnoCobra ski system cannot cross open water. They were not designed to skip water and do not float. Stay away from open water and thin ice.

Towing/Winching

- Do not attach a chain, tow strap, or hook directly to, or around the SnoCobra ski, saddle brackets, or ski handle. Read the ATV Operator's Manual to learn where the towing points are on the vehicle frame, front and back.

Illustrated Parts Breakdown

1. Ski
2. Left Hand Side Saddle
3. Right Hand Side Saddle
4. Tire Strap
5. Front Cross Plate
6. Ski Handle
7. Locking Collars
8. Cam Lever
9. Wear Pads
10. Wear Bars
11. Rear Cross Plate
12. Locking Pin



Section A

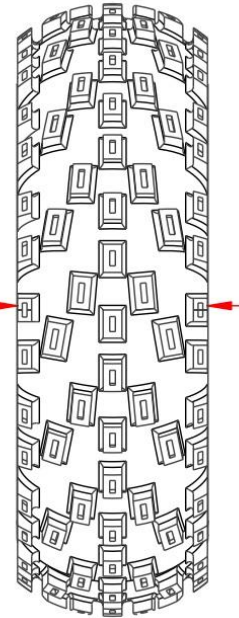
Saddle Adjustment Instructions

Note: Every tire is different depending on the diameter, width, wear, tread pattern, and manufacturer.

The Saddles are made to adjust from 6 ½" – 11 ½" width tire size.

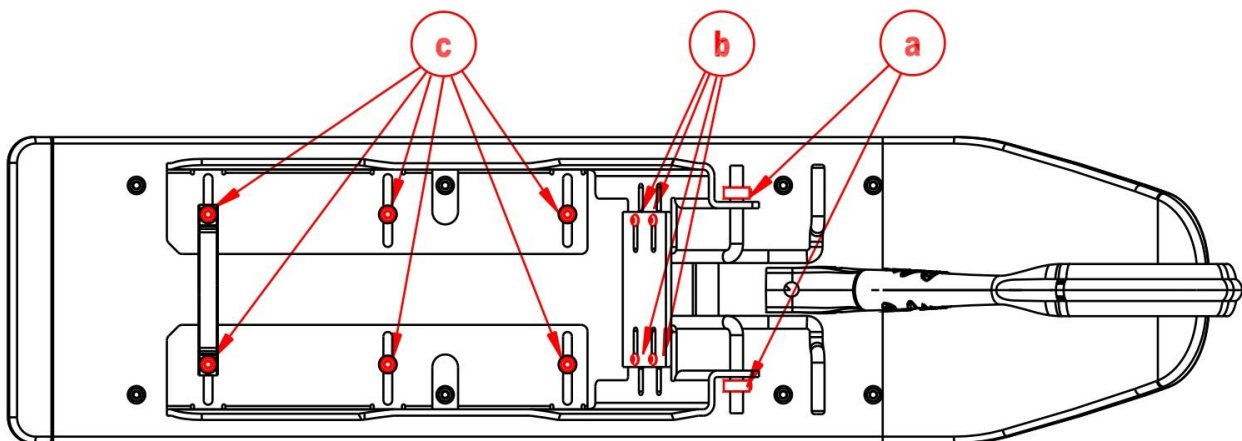
1. Determine Tire Width

Measure Tire Width



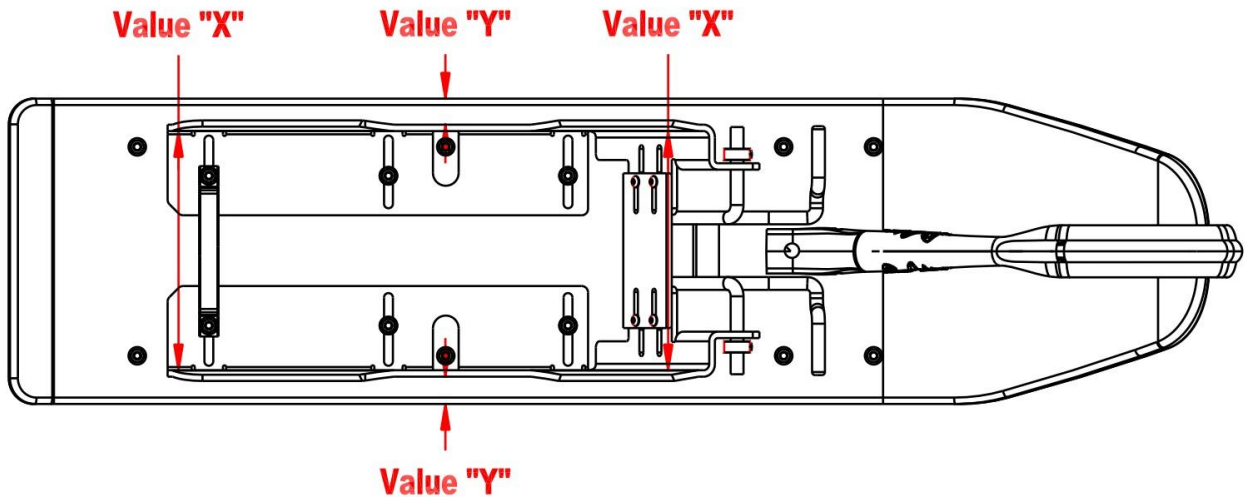
2. Loosen:

- a. Loosen Cam Lever Collars (A)
- b. Loosen Cross Plate mounting nuts (B)
- c. Loosen Saddle mounting nuts (C)



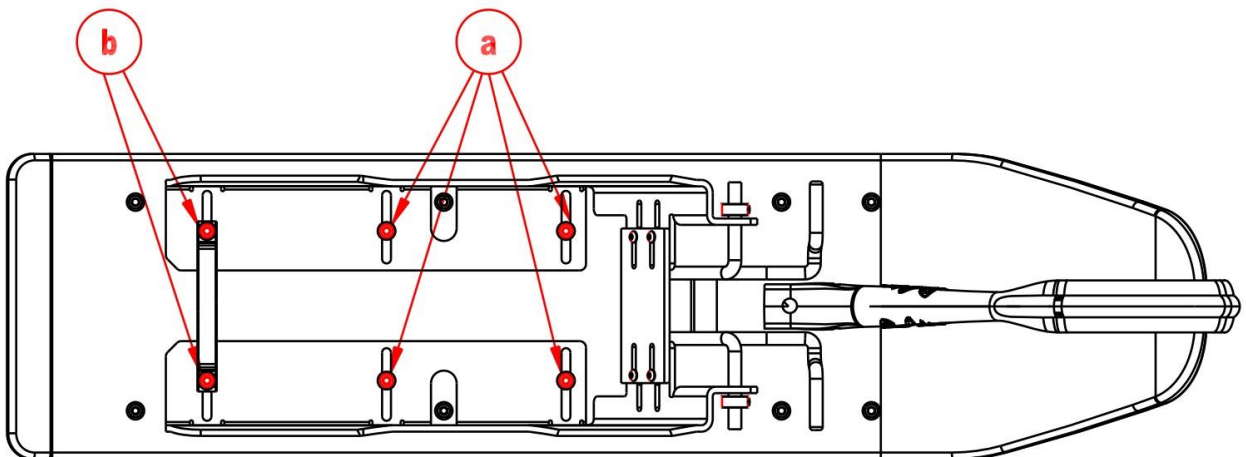
3. Adjust Saddle:

- Adjust Saddle to be $\frac{1}{2}$ " wider than tire width. (Value X).
- Verify correct saddle width on front of saddle. (Value X).
- Verify same saddle width on rear of saddle. (Value X).
- Verify saddle is centered on ski. Outside of LHS and RHS should be equal distance from edges of the ski. (Value Y).



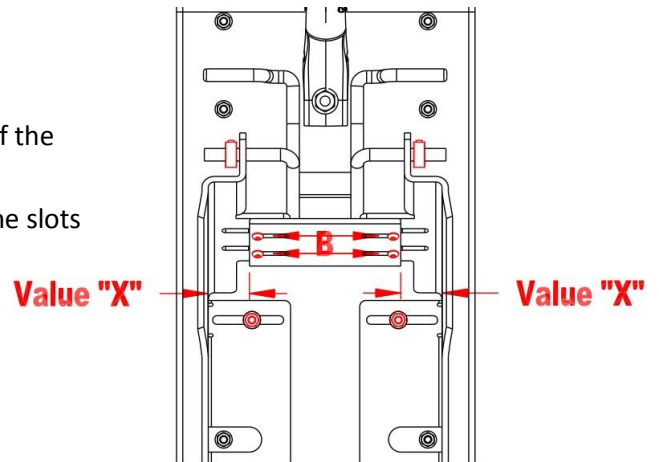
4. Temporarily tighten Saddle mounting nuts:

- Lightly tighten the front (4) Saddle mounting nuts (a).
- Make sure the strapping assembly is properly aligned on Rear Cross Plate. Lightly tighten the (2) rear Saddle mounting bolts (b).



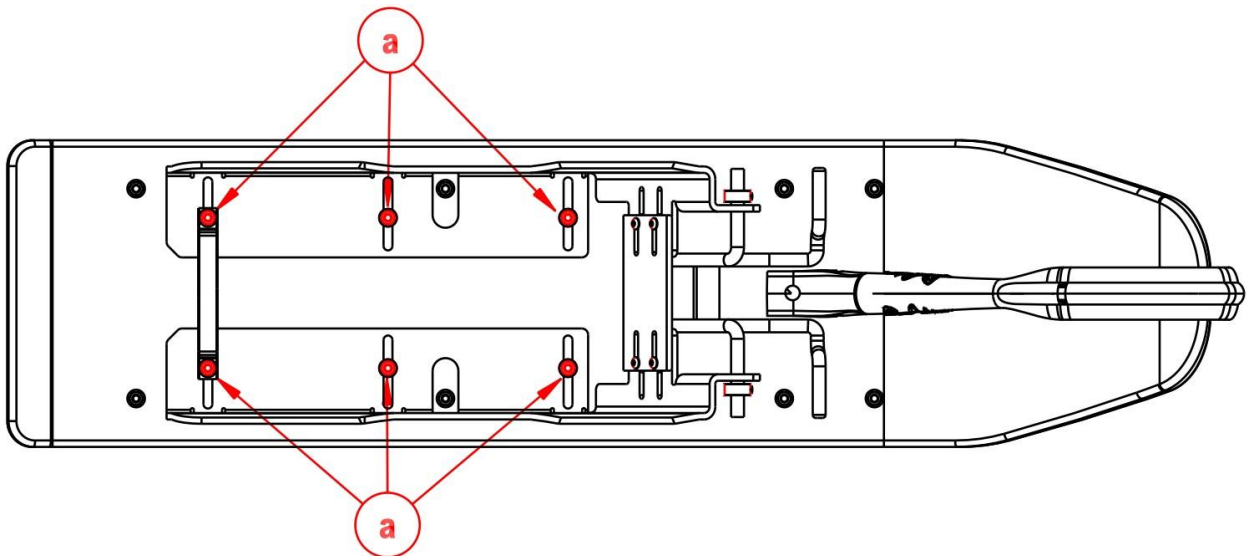
5. Tighten Front Cross Plate mounting nuts:

- Adjust the front cross plate to be in the center of the saddle brackets. (Value X)
- Slide the (4) cross plate bolts to the outside of the slots in the cross plate.
- Tighten the cross plate nuts (B) to 120 in. lbs.



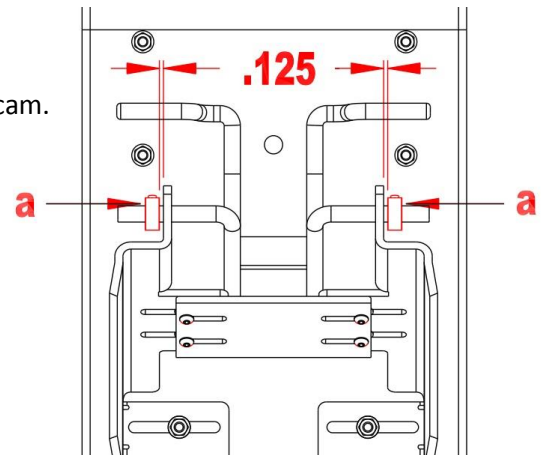
6. Tighten Saddle mounting nuts.

- Tighten the saddle mounting nuts (A) to 80 in. lbs.



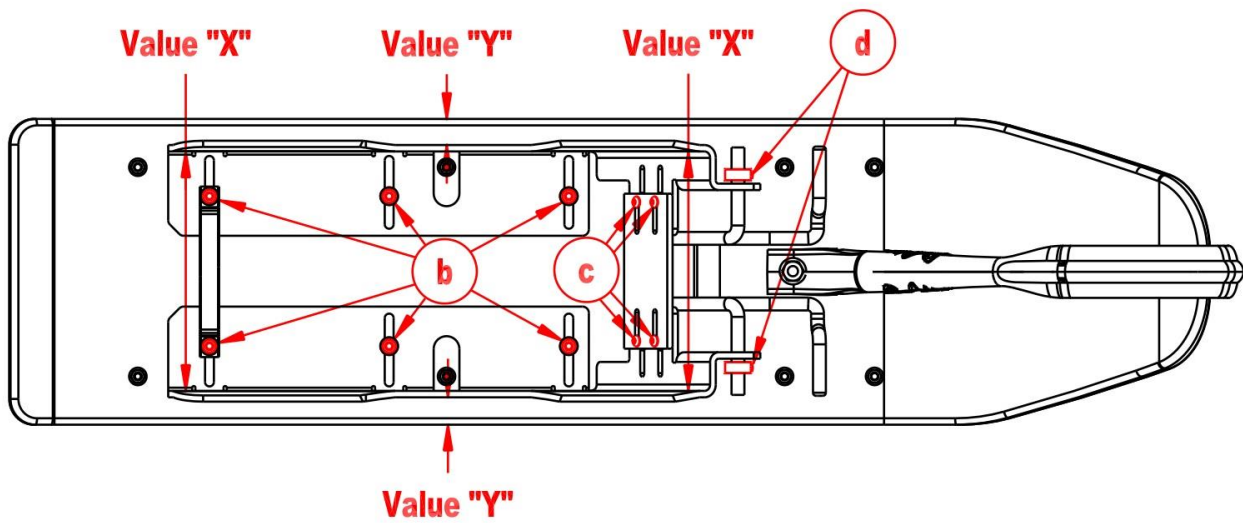
7. Cam Lever Collars:

- Slide the cam lever collars (A) towards the inside of the cam.
- Leave a 1/8" gap between the collars and the saddle.
- Apply Loctite to the set screws on collars.
- Tighten the set screw on the collars.



8. Verify that:

- a. Saddles are proper width (Value X) and centered on the ski (Value Y).
- b. Saddle mounting nuts are torqued to 80 in. lbs. (B)
- c. Cross plate nuts are torqued to 120 in. lbs. (C)
- d. Set screw on cam lever collars are tightened. (D)

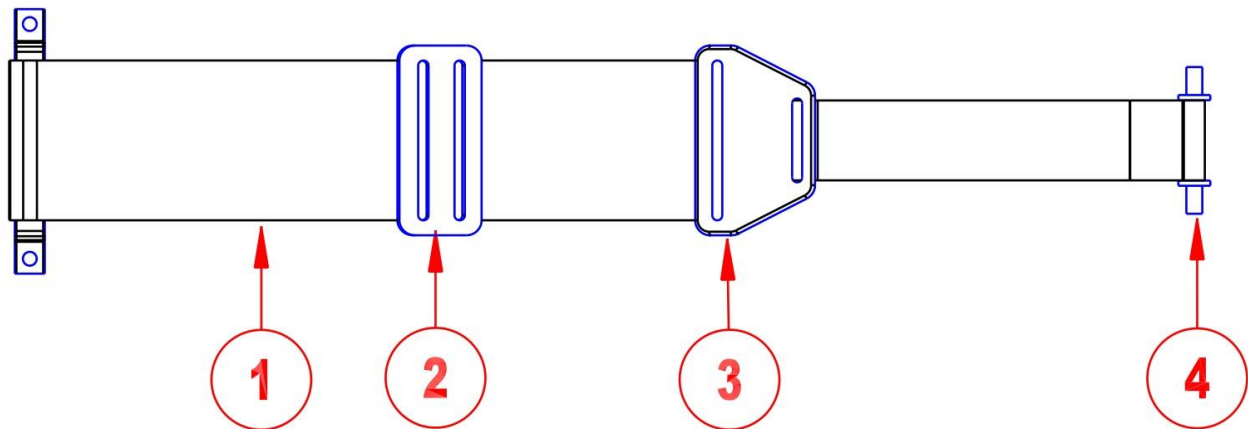


Section B

Tire Strap Adjustment Instructions

The SnoCobra Ski System is a universal strapping fit system that can be adjusted to fit tire sizes ranging from 20" – 28" in diameter. Other strap sizes are available upon request. Because of the adjustability, great care must be taken when adjusting the system to fit your machine.

- 1) The Strapping System can only be adjusted after:
 - a. The Saddles are properly adjusted (See Table A)
 - b. The vehicle's front tires have been driven into the saddles (See Installation Table)
- 2) With the vehicle in park, put the strapping system around your tires. The strapping system should be centered over the tire.
- 3) Lift the cam lever up and place the Cam Pin in the top Cam Pin seat. Adjust the strap (Adjustment Buckle towards cam pin for larger tire, away for smaller) so that the cam lever is parallel with the ground when the Cam Pin is in the top Cam Pin Seat. (See Diagram B)
- 4) Depress cam lever and insert locking pin.



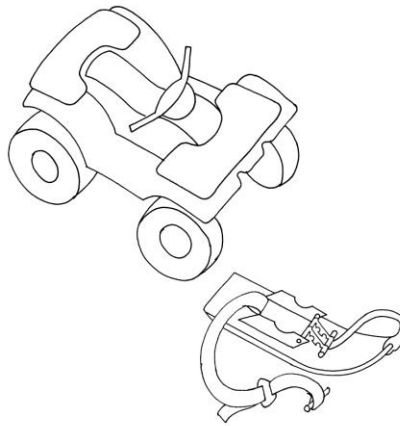
WARNING: The strapping system is the biggest safety component on the ski. Incorrect installation of the strapping system and failure to re-adjust it before every use can result in the skis coming off of the vehicle while the vehicle is moving. One must properly install the strapping system to prevent serious injury or damage to the SnoCobra ski system and the vehicle. It is essential that EVERY user read, understand and follow the instructions for the SnoCobra ski system before use.

It is important to note that the strapping adjustment varies between uses (tire pressure, temperature, tire tread wear, strap system falling out of adjustment) and therefore must be re-adjusted before every use

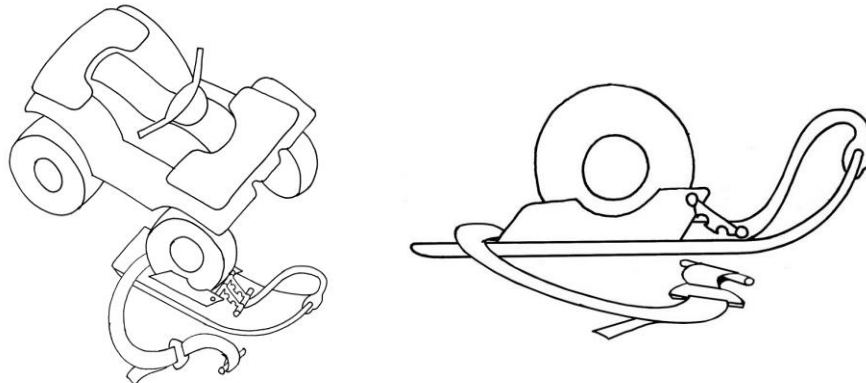
Installation Instructions

Read ALL Instructions before use.

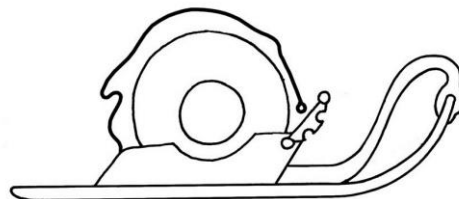
- a. Verify SnoCobra Ski system has been properly assembled as shown in Section A.
 - b. Verify SnoCobra Ski system settings are adjusted to proper tire size section B.
 - c. For components identification, see section A.
1. Place ONE ski in front of passenger's side tire, with strapping system lying to the outside position of the ski and vehicle.



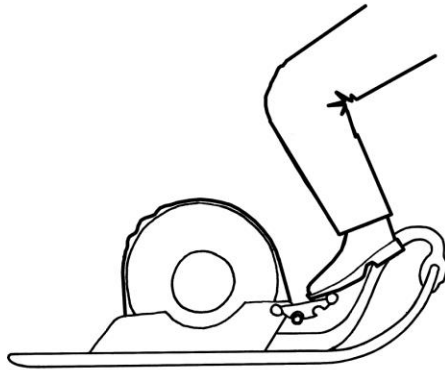
2. Drive vehicle's front passenger tire into the saddle until the tire pushed up against the front cross plate. DO NOT put vehicle in 4WD during operation.



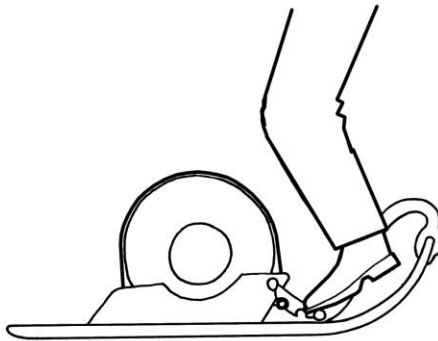
3. With the vehicle in park, put the strapping system around your tire. The strapping system should be centered over the tire.



4. Lift the cam lever up and place the Cam Pin in the top Cam Pin seat. Adjust the strap (Adjustment Buckle towards cam pin for larger tire, away for smaller) so that the cam lever is parallel with the ground when the Cam Pin is in the top Cam Pin Seat.

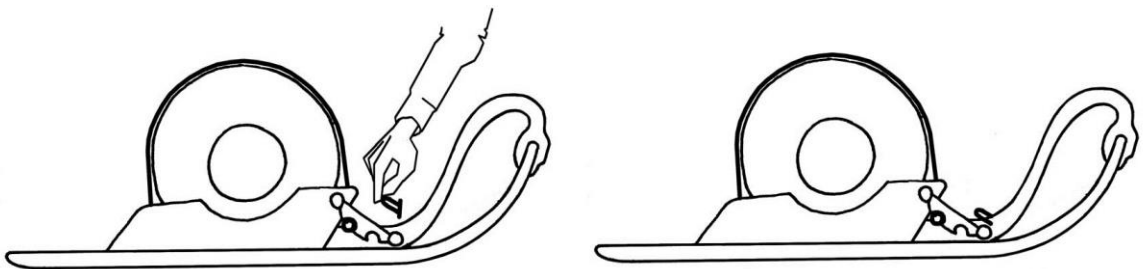


5. With the cam pin inserted in the cam lever, push the cam lever down with your foot on the cam lever arm. **CAUTION:** Do not place fingers on or around the cam lever or around the pinch point by the cam lever. Fingers can be pinched.



6. Verify that:
- Saddle plates are the correct width and sides of tire are snug against the saddles.
 - Tire is all the way forward and pushing against the front cross plate.
 - Strapping system is centered on the tire and is not twisted.
 - Cam lever is locked down and free from any obstruction.

7. Install the locking pin through the handle. Make sure to connect the spring to the pin.



The first ski has been installed. Please refer to instructions 9 – 12 for the second ski installation.

8. Place the second ski in front of driver's side front tire, with the proper adjustments made as shown in section B. Place strapping system to the outside of the ski and vehicle.
9. Drive vehicle front tire into saddle of ski until tire pushes against front cross plate. Do Not put vehicle in 4WD.
10. Once vehicle is put in Park, repeat steps 3 – 8.
11. Skis are ready for use.

Warning: Never put a vehicle in 4WD when the SnoCobra ski system has been installed.

Removal

Instructions for removing the SnoCobra ski system.

1. Make sure vehicle is stopped and in the Park position, on snow or ice, and is on level ground.
2. Both skis should be taken off at the same time. This prevents one ski from going in reverse that might cause damage to the ski.
3. Remove the locking pin from the handle on both skis.
4. Grab onto the cam lever arm and pull it up and towards the front tire. (Both skis)
5. When the cam lever releases pressure take out the cam pin with the strap from the hook on the cam lever. (Both skis)
6. Lay the straps aside and away from behind the skis and away from the vehicle.
7. Put the vehicle in reverse and back out of the skis.
8. Removal complete.

Warning: Do not put the vehicle into 4WD after the SnoCobra Ski System has been removed. The front wheels turn at a different speed than the rear tracks. This may cause damage to the vehicle and personal injury.

Operation

WARNING: READ AND UNDERSTAND YOUR VEHICLES OWNERS MANUAL.

Do Not exceed your vehicle manufacturer's operational recommendations. Read your vehicle operators manual before operating your vehicle with SnoCobra ski system. Do not use 4WD mode with ski system installed, or when only rear track system is installed.

It is important to understand that you need to learn how to operate your vehicle with the ski system installed on it. Practice riding with your ski system before you ride in unfamiliar terrain for the first time. SnoCobra skis do not operate the same as tires or tracks. A vehicle equipped with SnoCobra skis is a unique and different vehicle.

Your vehicle will respond differently with skis attached while turning, climbing and descending hills, and while traveling over snow and ice. In addition, a vehicle equipped with the SnoCobra skis is easier to steer under acceleration. Use caution when operating a vehicle that has the SnoCobra ski system installed.

Before Riding

1. Reinstall the strapping system everyday as tire deflation and changes in weather can cause the strap to loosen.
2. Check to make sure all hardware on skis are tightened and secure.
3. Check to make sure strap tension and alignment are correct.
4. Check to make sure cam lever is locked with safety pin in place.
5. Check to see that skis are clear of debris.
6. Follow you vehicle Owner's Manual check list for pre-riding instructions.

Protective Apparel

Safety Riding Gear is always recommended. Wear clothing suitable for operating conditions. A helmet, eye protection, gloves, boots and protective clothing (long pants and long sleeved shirts) are all important in providing protection and reducing chances of injury.

Trail Obstacles

Danger: Never drive into or hit trail obstacles at a high rate of speed. This could result in serious injury or damage to the SnoCobra ski system or vehicle. Keep alert, look ahead and read the trail as you ride. Watch out for bumps, ruts, rocks, logs and other obstacles on the trail. Watch out for those objects and other obstacles that may be hidden under the snow or ice. Slow down and be prepared to stop when approaching obstacles.

Danger: Do not attempt to drive over any rocks, logs or any other obstacles with the SnoCobra ski system as damage to the skis or vehicle and personal injury may occur. Use caution when entering or exiting steep ditches or ravines. Watch for over hangs or natural obstructions that would contact the SnoCobra Ski System. Always use care when traveling in unfamiliar terrain or during deep snow conditions.

Warning: Never ride beyond your limit of visibility.

Break in Period

Each time after the SnoCobra ski system is installed, a break in period of approximately (1 mile) must be given for the strapping system and components to “settle in”. Take notice and check your ski system after driving this approximate distance. Adjust or tighten the strapping to the recommend settings (See page 11). Then continue with operation.

Snow and Ice

Do not operate vehicle equipped with ski system on any terrain other than snow and ice, including on mud and water. Even operating on snow and ice can create additional hazards, so keep alert while traveling on snow and ice. Always enter areas with potential hazards using caution and at low speed. Determine snow depths before entering unfamiliar terrain which may have concealed obstacles.

Operating Speeds

WARNING: Do not exceed 25 mph with a vehicle equipped with the SnoCobra Ski System. Do not operate your vehicle at speeds that would cause the ski system to become airborne. Do not operate your vehicle with skis beyond your abilities, the capabilities of your vehicle, or beyond what the terrain conditions can allow.

Operating at high rates of speed, attempting jumps or other stunts can increase your chances of an accident. **DO NOT** attempt jumps or stunts.

Operating in Ruts

Whenever possible, avoid operating in ruts created by snow or ice. Try to straddle ruts to avoid excess side pressure or side load on the ski system.

If operating in ruts is unavoidable take extra precautions to avoid excess side pressure or side load. When operating in deep ruts, **DO NOT** make sharp turns to attempt to get out of the rut. Try to follow the rut to the end or to a shallow section of the rut before attempting to drive out.

When attempting to drive out of a rut, try to minimize side pressure or side load. Excess side pressure or side load can increase the chance of causing the ski trapping system to loosen, causing damage to the skis.

When operating in ruts is unavoidable and vehicle has driven out of a rut, stop operation and check strapping system for proper adjustment and alignment. Check ski system for damage or loosened hardware.

Driving on Icy conditions

Operating on smooth bare ice can create additional hazards, such as the loss of steering control keep alert while traveling in snow or over frozen water for bare smooth ice. During cold weather or freezing rain, when ice conditions can develop, take extra precautions when traveling on hard packed snow surfaces or trails and watch for areas of ice. Always enter areas with potential ice hazards using caution and at slow rates of speed.

WARNING: Determine Ice thickness before traveling over frozen water. Do not travel on ice during thin ice conditions. Check with local authorities for ice conditions before traveling on frozen lakes, ponds or rivers.

Operating in Reverse

WARNING: DO NOT use reverse when your vehicle is equipped with SnoCobra skis. Operating in reverse may cause the skis to catch the terrain and rotate upward. Serious injury and damage to SnoCobra ski system and vehicle can occur.

Climbing, turning and descending hills

Your front brakes will not work with the SnoCobra ski system attached. Only your rear brakes will supply braking power to the machine. Use caution and avoid climbing or descending steep hills.

Do not operate your vehicle beyond your abilities or the abilities of the vehicle. Follow your vehicle owner's manual regarding proper, safe operation on hills. Turning too sharp on a side hill may cause the vehicle to roll over.

When climbing a hill, shift your weight forward and maintain your balance. Going downhill shifts your weight towards the back. On slippery surfaces, applying too much brake may cause you to slide and lose control.

While traveling downhill prevent sliding, and keep the rear tires or tracks turning, as this will allow you to maintain steering control. Gently apply brakes as needed to slow descent. Avoid locking your brakes, because locked brakes can increase the risk of sliding.

Do not attempt to side hill with the SnoCobra skis attached to the vehicle. It may cause the vehicle to roll over.

Maintenance

Maintenance Schedule

WARNING: Failure to follow these maintenance instructions could result in serious injury and damage to the SnoCobra ski system.

- Strapping System

The strapping system is susceptible to wearing. If any part of the strapping system becomes torn, cut, frayed, or damaged, it **MUST** be replaced.

If any hardware component of the strapping system is bent, broken, or damaged, the whole strapping system must be replaced.

Inspection of the strapping system must take place before every installation, and before every operation of the ski system.

Preventative maintenance should take place by making sure that your strapping system:

1. Does not rub on any rigid components during installation and use.
2. Does not receive more tension pressure than is recommended in the installation settings of the installation instructions.
3. Is stored in such a manner that does not cause damage or cutting of the strapping system.

- Saddle Brackets

If the saddle brackets have been broken, bent, or worn in a fashion that compromises system safety and rigidity, they must be replaced.

- Ski Handle

If any part of the ski handle breaks, cracks, or becomes worn in a fashion that affects the rigidity of the ski system or the locking pin from fitting into the handle, the handle must be replaced.

- Wear Bars and Pads

The wear bars and wear pads are considered “wear” items. These components will become worn from use. Contact from hard surfaces and objects will cause these components to wear at a faster rate. Once the welded portion of the wear bar has been ground off or the wear pad carbide has been worn down, they must be replaced. **Notice:** Damage to skis will occur without functioning wear bars and wear pads.

- **Composite Ski**

If the ski has any cracks, cuts, damage, or excessive wear that compromises the rigidity and strength of the ski, the ski must be replaced.

Preventative maintenance can take place by making sure the ski is:

1. Installed correctly using the recommended installation instructions.
2. Operated in a manner that prevents the ski from hitting or contacting hard objects, surfaces, or obstacles.
3. Stored per the recommend storage procedure.

- **Hardware**

If any of the hardware components (nuts, bolt, washers, etc) become worn, cross-threaded, or corroded, they must be replaced.

For a complete list of replacement parts, visit your local SnoCobra dealer or call Every Season Products at (1-866-377-0045).

Storage

The SnoCobra Ski System should be stored in a cool, dry area out of direct sunlight. Ultraviolet rays from sunlight can cause the strapping system to wear and composite ski to fade.

- Store the SnoCobra Ski System away from sharp objects that can cut or fray the strapping system.
- Store the SnoCobra Ski System in a dry area so hardware components do not corrode.
- Wash and dry the SnoCobra Ski System before storage, as components can corrode.

Torque Specification Table

Wear Bars/Wear Pads (10)	80 in-lbs
Saddle and Rear Cross Plate (6)	80 in-lbs
Front Cross Plate (4)	120 in-lbs
Ski Handle (2)	80 in-lbs
Locking Collars (2)	80 in-lbs

Washing the Skis

When washing the skis, garden hose pressure should not cause any concerns. If you are using a pressure washer take special care not to wash off the labels or damage the skis with high pressure water jets.

Note: If for some reason any safety label is lost or removed, you can order replacement labels free of charge from Every Season Products. Contact your local SnoCobra Dealer or Every Season Products (1-866-377-0045).

Warranty SnoCobra

Limited Warranty

Every Season Products LLC warrants to the original purchaser that the product or component shall be free from defects in materials and workmanship under normal use and service for a period of twelve (12) months from the date of purchase.

This limited warranty is void if Every Season Products LLC determines that failure has resulted from accident, abuse, misuse, neglect or normal wear and does not cover products that have not been maintained, been properly installed, or modified without Every Season Products LLC's approval, or are used on any vehicle that has had any components eliminated, modified, or altered that are required by the manufacturers vehicle standards. This limited warranty gives you specific legal rights. You may have others, which vary from jurisdiction to jurisdiction.

Customer's Remedies

SnoCobra's entire liability and your exclusive remedy shall be at Every Season Products LLC's option, to either repair, or replace the product with the same product or another product of equal value. Any replacement product shall be warranted only for the remainder of the original warranty period. In other words: if a warranted part was replaced after five (5) months, the new replacement part will only be guaranteed for seven (7) months, for a total of twelve (12) months. In no event shall the warranty extend beyond a total of twelve (12) months from the date of original product purchase. Any warranty claim shall be subject to receipt of prior authorization and shipping instructions from the dealer from whom the product was purchased, and return of the product, freight paid, together with an explanation of the defect. Any controversy or claim arising under or related to this Limited Warranty shall be settled by arbitration in accordance with the Rules of the American Arbitration Association before a single arbitrator selected in accordance with those rules, and judgment upon any award rendered by the arbitrator may be entered in any court having jurisdiction.

NO OTHER WARRANTIES

To the maximum extent permitted by applicable law, Every Season Products LLC disclaims all other warranties, expressed either expressed or implied, including but not limited to implied warranties of merchantability and fitness for a particular purpose.

LIMITATION OF LIABILITY

Every Season Products LLC and its suppliers shall have no responsibility or liability when its product is installed and/or used on vehicles that have had any components that are required by the manufacturer's vehicle standards eliminated, modified, or altered, or on vehicles for which its use is not recommended.

NO LIABILITY FOR CONSEQUENTIAL DAMAGES

To the maximum extent permitted by applicable law, in no event shall Every Season Products LLC or its suppliers be liable for any special, indirect, incidental or consequential damages or other loss arising from use of inability to use the product. Because some jurisdictions do not allow the exclusion or limitation of liability for consequential or incidental damages, the above limitation may not apply to you.

RETURN POLICY

You may return any unused and unwanted item(s) within 15 calendar days from purchase for an exchange or a refund. Call Every Season Products Customer Support at (866) 377-0045 ex. 2 and we will provide you with a shipping label to return the item(s). Customer pays for return shipping charges. All items shipped back must be in original packaging. When returning an item, drop the package off at your nearest Fedex dropoff location.

A 10% restocking fee applies if returned within 30 days.

Technical Support

Every Season Products
PO Box 236
Dresser, WI 54009

Phone: 1-866-377-0045
Fax: 1-866-377-0045
www.snocobra.com