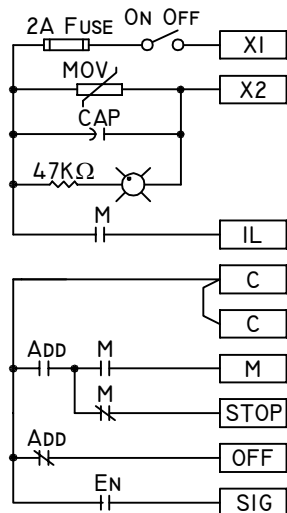
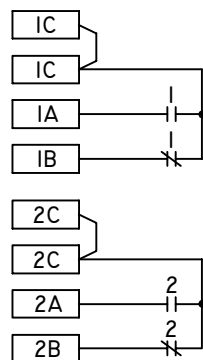


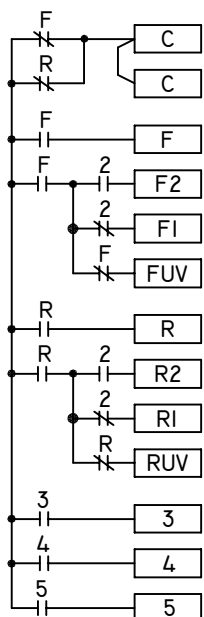
### MASTER



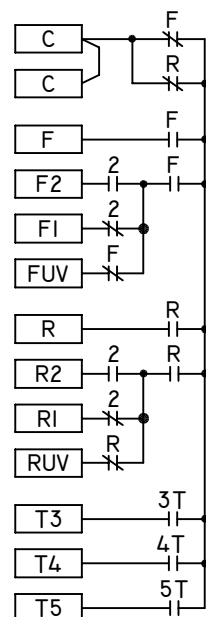
### AUX OPTIONAL



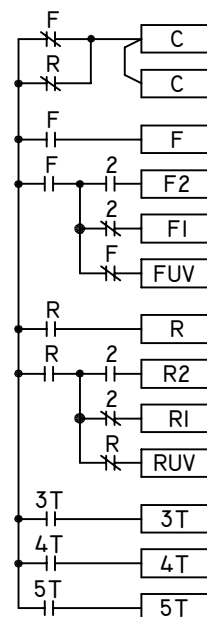
### B



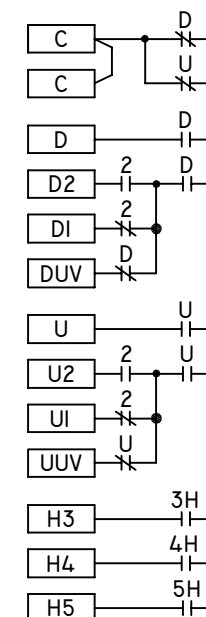
### T1



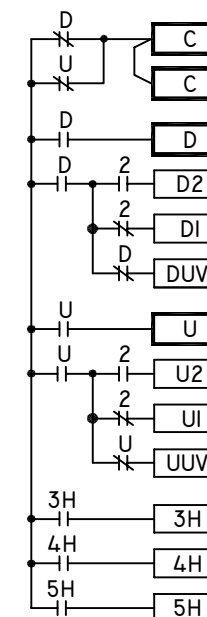
### T2



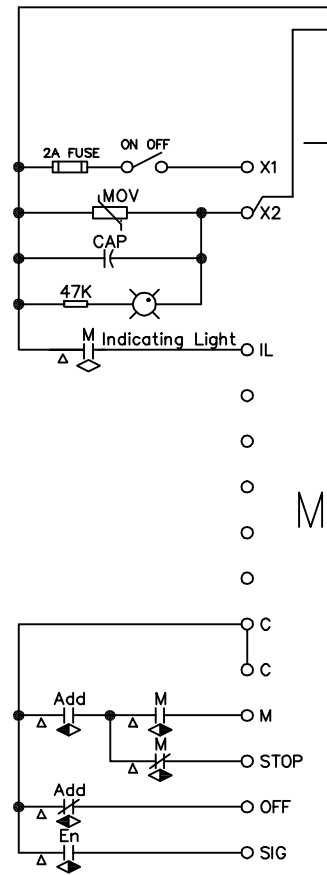
### H1



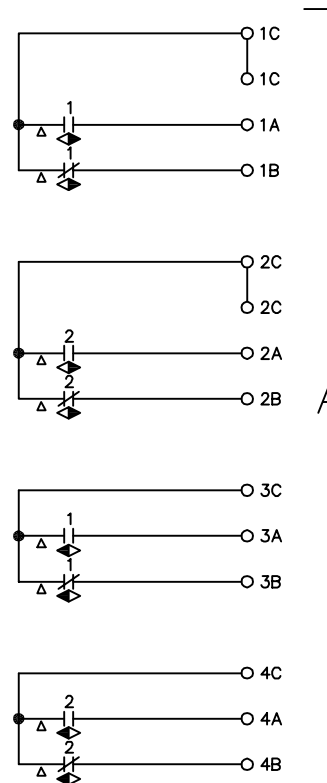
### H2



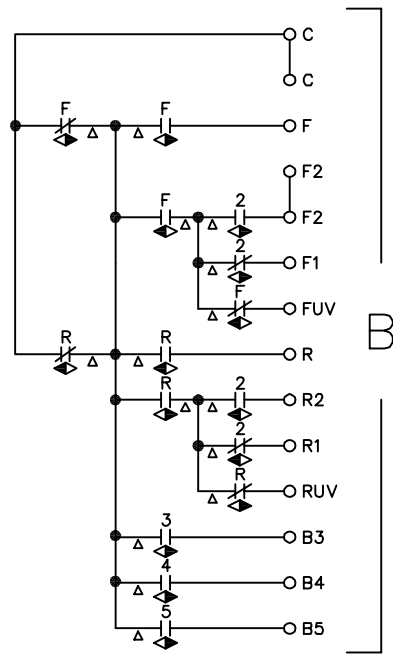
FILE NO.	SCALE	THIS DRAWING IS THE PROPERTY OF ROBINSON ENGINEERING CO. AND IS SUBJECT TO RETURN UPON DEMAND. IT SHALL BE CON-SOLDER CONFIDENTIAL AND SHALL NOT BE USED IN ANY MANNER THAT IS DETRIMENTAL TO THEIR BEST INTERESTS.	 GARLAND, TEXAS
DATE 8-12-99			
ASBY REF. 12-1734			
RELEASE			
CUST. NO.		OUTPUT CIRCUITS	
DRAWN SCOTT BOOKER		<b>Crane Boss 300L</b>	
DATE 8-12-99		DWG. NO. 12-1761	REV.
		SHEET 1 OF 1	



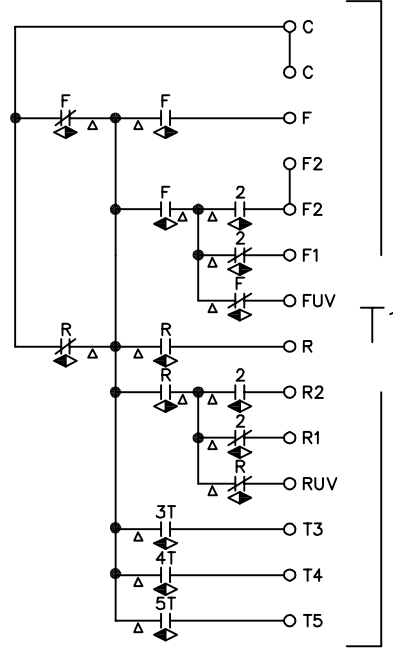
MASTER



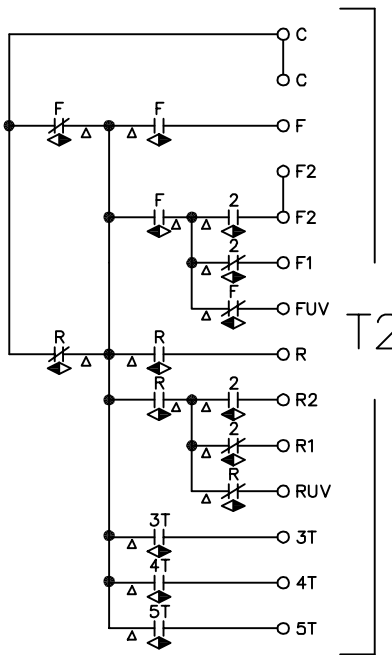
AUX



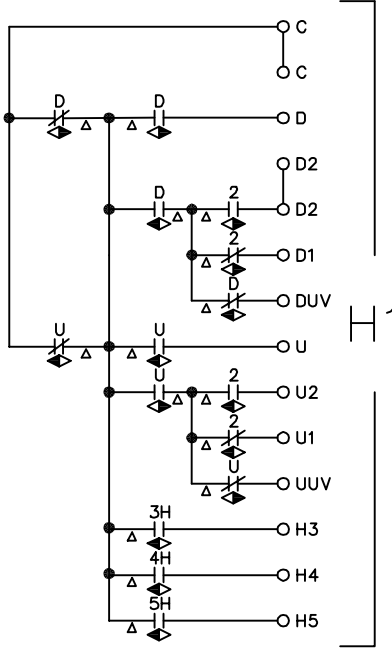
T1



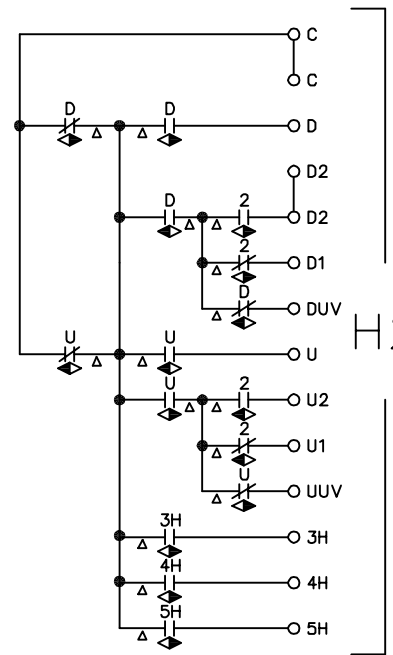
T2



H1

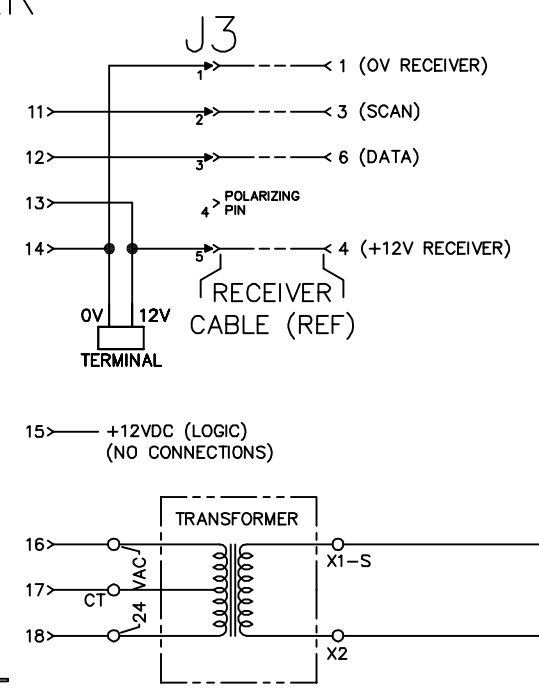
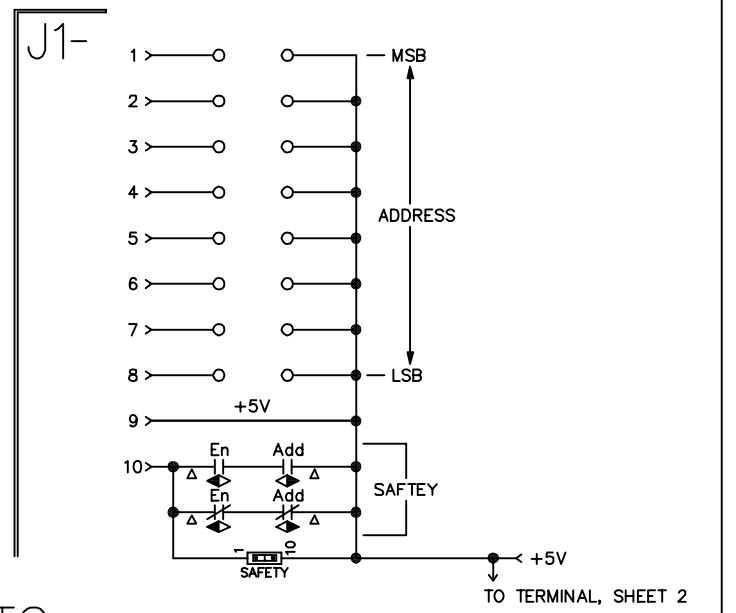


H2

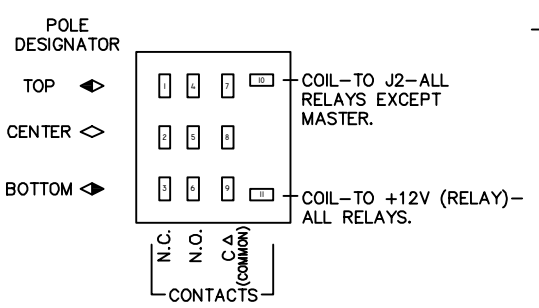


J1

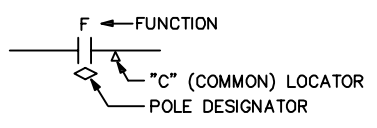
TO DECODER  
J1



CONTACT LOCATOR  
(FACE VIEW OF SOCKET)



CONTACT SYMBOL



REV.	A	Added Aux Circuits, F2/D2 Terminals, & Replaced "Jumpers" w/ Dip Switch	5-1-00
REV.		DESCRIPTION	DATE

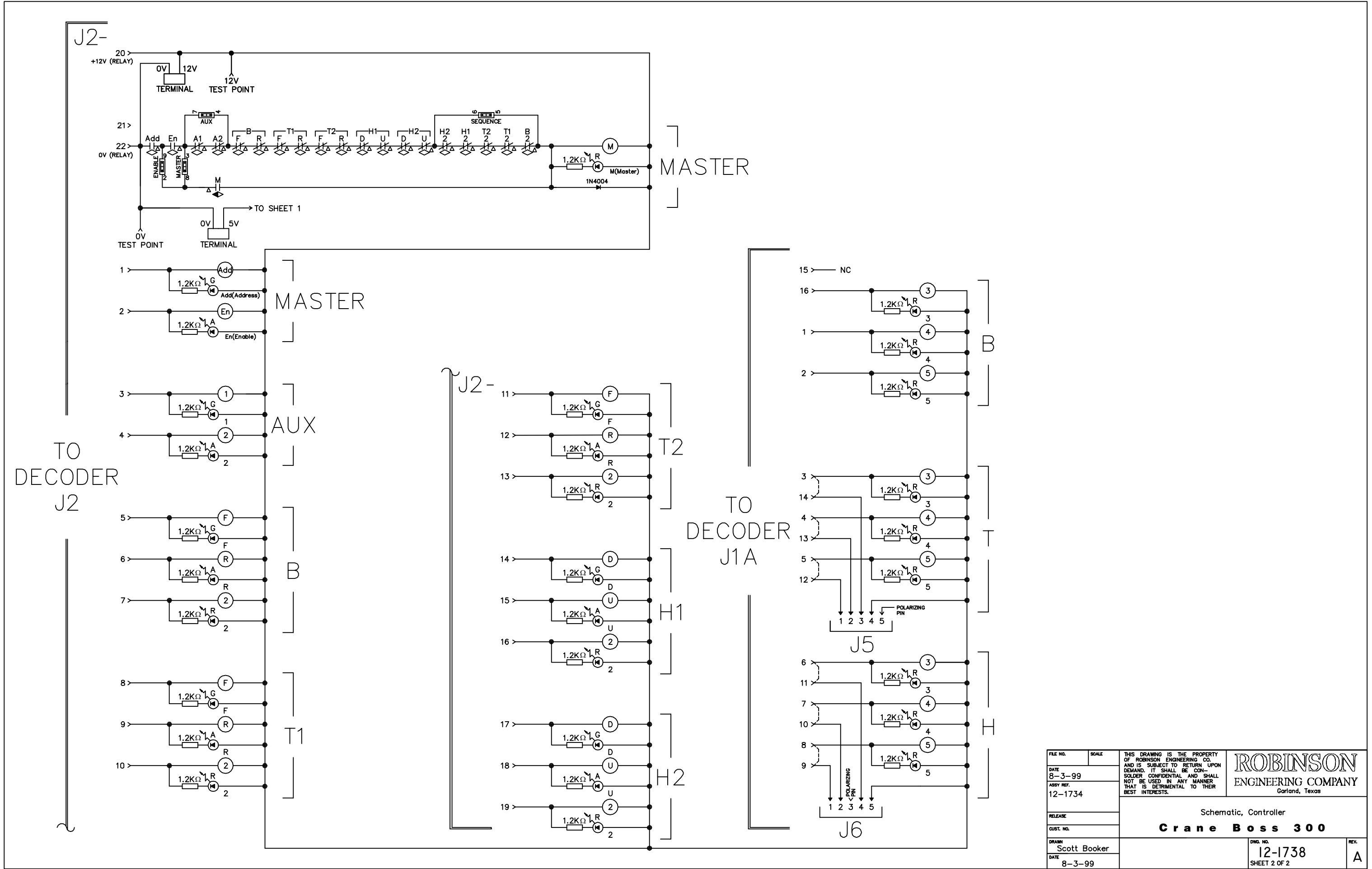
FILE NO.	SCALE
DATE	8-3-99
ASSY REF.	12-1734
RELEASE	
CUST. NO.	

THIS DRAWING IS THE PROPERTY OF ROBINSON ENGINEERING CO. AND IS SUBJECT TO RETURN UPON DEMAND. IT SHALL BE CONSIDERED CONFIDENTIAL AND SHALL NOT BE USED IN ANY MANNER THAT IS DETRIMENTAL TO THEIR BEST INTERESTS.

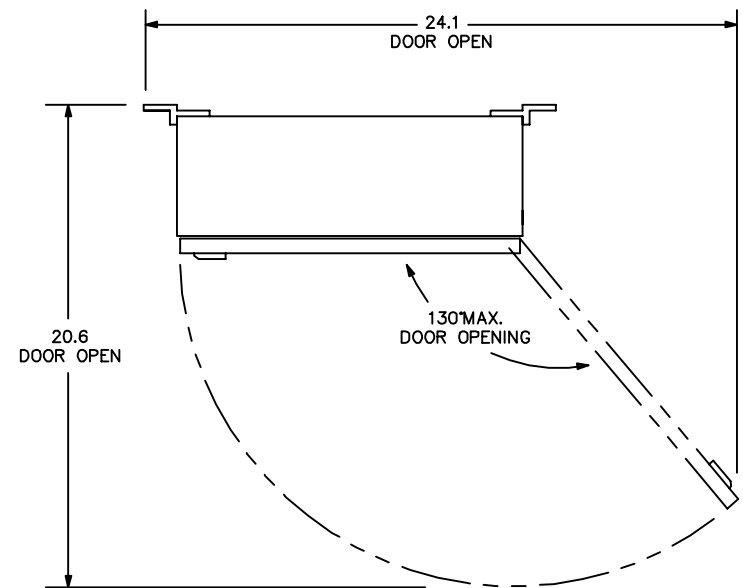
**ROBINSON ENGINEERING COMPANY**  
Garland, Texas

Schematic, Controller  
**Crane Boss 300**

DWG. NO.	12-1738	REV.	A
SHEET	1 OF 2		

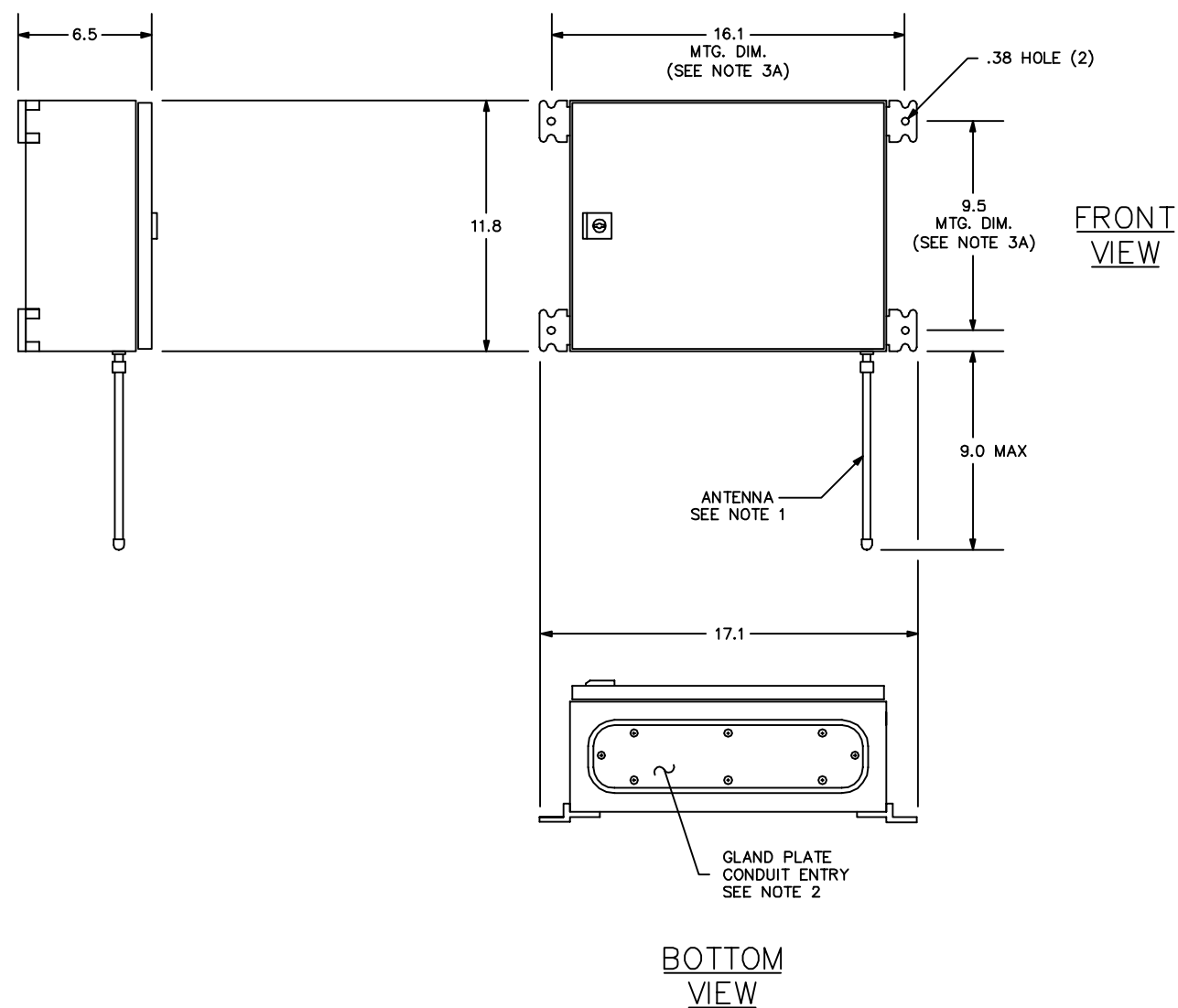


FILE NO.	SCALE	THIS DRAWING IS THE PROPERTY OF ROBINSON ENGINEERING CO. AND IS SUBJECT TO RETURN UPON DEMAND. IT SHALL BE CONFIDENTIAL AND SHALL NOT BE USED IN ANY MANNER THAT IS DETRIMENTAL TO THEIR BEST INTERESTS.	<b>ROBINSON</b> ENGINEERING COMPANY Garland, Texas
DATE 8-3-99	ASSY. NO. 12-1734		
RELEASE	Schematic, Controller		
CUST. NO.	<b>Crane Boss 300</b>		
DRAWN Scott Booker	DWG. NO. 12-1738	REV. A	
DATE 8-3-99	SHEET 2 OF 2		



**NOTES:**

1. ENCLOSURE SHOULD BE LOCATED SO THAT ANTENNA IS VERTICAL AND CLEAR OF LARGE METAL OBJECTS AND CRANE ELECTRIFICATION. FOR ANTENNA LOCATED REMOTELY, CONTACT ROBINSON ENGINEERING COMPANY FOR REMOTE ANTENNA INSTALLATION KIT. PREFERABLY, ANTENNA SHOULD BE IN VIEW OF OPERATOR.
2. CONDUIT ENTRY MUST BE CONFINED THRU GLAND PLATE ON THE BOTTOM AND NO CONDUCTORS SHOULD BE ROUTED ABOVE THE TERMINAL STRIP AREA.
3. STAINLESS STEEL OPTION (NEMA 4X):
  - A. MOUNTING DIMENSIONS ARE 8.15 x 16.45
  - B. GLAND PLATE IS OMITTED.



**FRONT VIEW**

**BOTTOM VIEW**

FILE NO.	SCALE 1/4"	THIS DRAWING IS THE PROPERTY OF ROBINSON ENGINEERING CO. AND IS SUBJECT TO RETURN UPON DEMAND. IT SHALL BE CONSIDERED CONFIDENTIAL AND SHALL NOT BE USED IN ANY MANNER THAT IS DETRIMENTAL TO THEIR BEST INTERESTS.	<b>ROBINSON</b> ENGINEERING COMPANY Garland, Texas
DATE 8-2-99	ASSY REF.		
RELEASE	OUTLINE CRANE RADIO CONTROL		DWG. NO. 12-1608
CUST. NO.			
DRWN Scott Booker	DATE 8-2-99	STANDARD TOLERANCES EXCEPT AS NOTED: .XXX DECIMALS ± .010 FRACTIONS ± 1/32 .XX DECIMALS ± .020 ANGLES ± 1°	SHEET 1 OF 1
REV.	DESCRIPTION	DATE	

C	REVISED & REDRAWN	8-2-99
B	ADDED NOTE 3	10-9-91
A	REVISED NOTES	5-22-90