

**Choices She  
Will Love**

**Extensions**  
**Keratin-Tipped**  
**Tape-In**

**Education**  
**Warm and**  
**Cold Fusion**  
**Or Extensive**  
**Classes**



**Strand by strand**  
making a difference  
**Join our**  
**Pink Hair for Hope team**

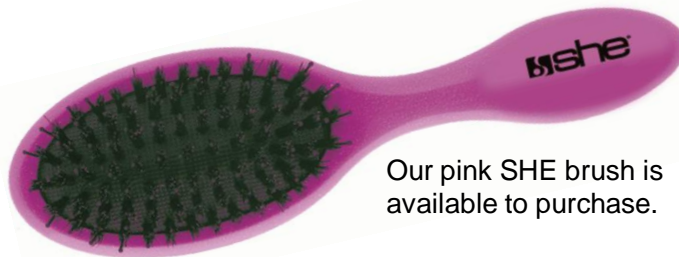
# Pink Hair for Hope



SHE by SO.CAP.USA is committed to women's health and the fight against cancer. Pink Hair for Hope has raised \$2.5 million. For a \$10 donation, the client chooses between 5 shades of our strand-by-strand extensions. The client wears a symbol of hope and awareness and the stylist offers a unique service. Join our national team.



Please participate and register  
[www.pinkhairforhope.org](http://www.pinkhairforhope.org)



Our pink SHE brush is available to purchase.



100% of the net proceeds are donated to Hair for Hope Foundation, which supports breast cancer charities nationwide.



# Extensions Methods

## Strand-by-Strand Kit



## Tape-In (Extensive) Kit



Offer your clients a choice of hair extension attachment methods. Skills in **both** will increase your value to clients and bottom line. Classes and free refreshers courses available weekly. Reserve a spot in an upcoming class. Group discounts available. **Refer a friend and receive 10% off your next order.**

1-877-855-4247



# ishe<sup>®</sup> USA

175 Myrtle Avenue, P.O. Box 51  
Mahopac Falls, NY 10542

Your Choice for  
Quality

**Weft**



**Tape-In**



**Clip-In**



**Keratin-Tip**



Made in Italy

