

DEEP BLUE



***INSTRUCTION MANUAL
AND LIMITED WARRANTY***

Congratulations on acquiring your new **DEEP BLUE** watch! **DEEP BLUE** watches are designed for the active lifestyle enthusiast. Combining rugged styling and precision timekeeping. **DEEP BLUE** produces solid and dependable timepieces for today's active and demanding lifestyles.

DEEP BLUE guarantees your **DEEP BLUE** watch for 12 months from the date of your purchase. Subject to guarantee conditions, this international guarantee covers all faulty material and workmanship.

CAL. 3U62

INSTRUCTION MANUAL

This watch is an analog (hand) display diver's watch equipped with an electronic depth meter. The familiar watch-face format is convenient to confirm depths while diving. Further, a chronograph function finds uses in a variety of activities besides diving. (Please note that the depth meter function should be used only as an auxiliary instrument.)



All repairs of this product, including battery replacement, should be conducted at our Service Center. For repairs and inspections please contact the place of purchase or contact a Service Center directly.

Diving with this watch

Diving can be a safe, enjoyable activity when diving rules are properly followed. It is always, however, accompanied by certain risks including diver's paralysis and unanticipated accidents. Before diving please obtain proper diving instruction and be sure to conduct safety checks. Please use this watch only after you have read and fully understood the operating procedures and cautions in these instructions. Using this watch other than as indicated in these instructions may result in failure of the watch to function properly.

Safe Diving

1. Use this product only after having received proper instruction in safe diving procedures.
2. Always use the "buddy system." This watch is not a substitute for a diving partner.
3. This product is recommended for sports diving to depths of up to about 30 meters, although the depth indicator will measure depths up to 50 meters.
4. Early battery replacement is recommended. A new battery will last approximately 2 years. (However, this will vary greatly depending on the frequency of depth meter use. Replace the battery early.) *** Battery replacement should be conducted only at Service Centers.**
5. Be sure to rest sufficiently after diving, as specified by diving rules. Riding in an airplane or moving to a high altitude too soon after diving may cause decompression sickness.
6. Use the depth meter function of this watch only as an auxiliary or backup instrument.
7. Avoid rapid ascents when diving, as these adversely affect the human body, including causing diver's paralysis. Maintain a safe ascent speed while diving. An ascent of 10 meters or less per minute is recommended for sports diving to avoid various possible problems.

Do not use the depth meter when...

1. In locations with altitudes exceeding 4,000 meters.
The watch will be unable to measure depth accurately.
2. In temperatures outside of the warranted temperature range.
The warranted temperature range for the depth meter in this watch is from 10°C to 40°C / 50°F to 104°F.
3. In potentially dangerous activities or conditions.
This watch is not designed for use in maritime emergencies or to prevent sea disasters and the like.
4. A substitute for a pressure gauge is needed.
This watch is not designed to gauge pressures other than those associated with water depth.
5. Diving using a helium enriched environment.
This watch cannot be used in a helium enriched environment, as this may cause malfunction or breakage.

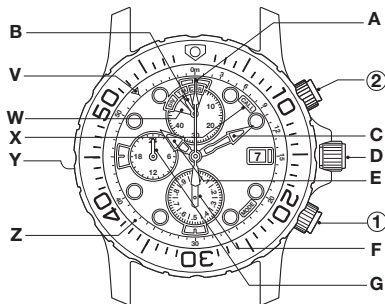
Stop using this product while diving when...

1. The low-battery warning indicator is activated.
As the battery approaches the end of its life, the display switches automatically from the depth meter display to the time display, and the second hand begins to move in 2-second increments.
2. The watch's depth readings differ greatly from those of other depth measuring instruments.
3. The watch stops or exhibits any abnormal functioning. (Avoid knocking the watch against diving equipment, rocks or other hard objects.)

*** Service for this watch should be conducted only by Service Centers.**

Operating instructions

This watch has three modes : Time Mode , Diving Mode , and Chronograph Mode.



*** Never manipulate the crown or press the buttons during a dive.**
This illustration shows a watch using meters to indicate depth readings.

[Names of parts]

Name	Time Mode	Diving Mode	Chronograph Mode
A: Function hand	Points to 12H	Indicates depth	Chronograph second hand
B: Mode hand	Points to TM	Points to DIV	Chronograph minute hand
C: Minute hand	Always displays minutes		
D: Crown	Used to set time and date		
E: Hour hand	Always displays hours		
F: Second hand	Displays seconds		Chronograph 1/20 second hand
G: 24-hour time hand	Always displays 24-hour time in conjunction with the hour hand		
①: Button ①	Use to switch modes, etc.		
②: Button ②	Used to call Maximum depth and for chronograph measurements, etc.		

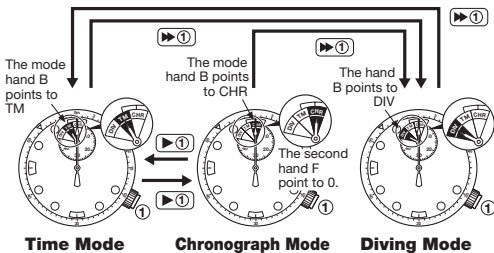
- V:** Over Zone MarkThe function hand points to this mark (at the 53 minute position) at depths over 50 meters.
- W:** Mode display.....DIV = Diving/ TM = Time/ CHR = Chronograph.
- X:** CALL.....Pushing Button ② will display the maximum depth memo.
- Y:** Pressure sensor (Case back side)
.....Measures depth by sensing water pressure.
- Z:** Depth reading units.....Depth readings are indicated in meters or feet, depending on the model.

Switching modes

Switch between the three modes simply by pressing button ①.

For ① press Button ①.

For ① press Button ① continuously for 2 seconds.

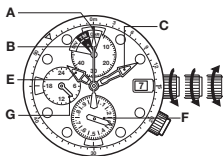


Time mode

Switch to the Time Mode from the diving Mode by pressing button ① continuously for 2 seconds. Switch to the Time Mode from the Chronograph Mode by pressing button ① once.

About the Time Mode

1. The Time Mode displays both 12 and 24-hour time.
2. With the exception of the second hand, the time may be read even while using the other modes.



Display in the Time Mode

Please refer to the fold-out watch diagram located on this manual.

- A** — Points to 12H
- B** — Points to TM
- C** — Minute hand
- E** — Hour hand
- F** — Second hand
- G** — 24-hour time hand

[Setting the time and date]

Make sure that the watch is in the Time mode by confirming that the mode hand B is pointing to TM.

<Setting the time>

1. Unscrew the crown in the indicated direction to release it, and pull it out two steps. The second hand F will spin rapidly and stop at 0.
2. Set the hours and minutes by turning the crown. Check the 24-hour time hand to confirm whether the hands are set appropriately to AM or PM.
3. Push the crown back to its original position.
4. Hold the crown down and turn it to screw lock it back in place.

<Setting the date>

1. Unscrew the crown in the indicated direction to release it, and pull it out one step.
2. Set the date by turning the crown. (If the crown is turned in the wrong direction there will be no effect.)
3. Push the crown back to its original position.
4. Hold the crown down and turn it to screw lock it back in place.

* Setting the date between the hours of 9 PM and 5 AM may result in the date not changing by the next day.

* Do not attempt to set the time or date when in a mode other than the Time Mode.

<When manipulating the crown...>

About the screw lock

1. Always return the crown to its original position and lock it when finished setting the watch.
2. Do not press any of the buttons while the crown is pulled out. Doing so may cause a mode change and disturb the position of the hands.
3. Do not pull out turn the crown when it is wet. Doing so may allow water to seep inside the watch and cause malfunction.

Screw locked position



Freed from the screw locked position

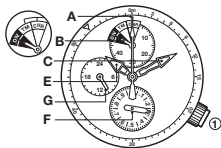


Diving mode

From the Time Mode, or the Chronograph Mode, switch to the Diving Mode by pressing button ① continuously for 2 seconds.

About depth readings

1. After switching to the Diving Mode, depth readings will commence automatically when diving begins.
2. The depth will be measured and displayed in 1 meter increments up to 50 meters.



Display in the Diving Mode

- A — Depth indicator hand (function hand)
- B — Points to DIV
- C — Minute hand
- E — Hour hand
- G — 24-hour time hand
- F — Second hand

Reading the Depth

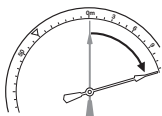
While diving, the number indicated by the depth indicator hand A (the function hand) is the present diving depth. The depth indicator hand begins to function at a depth of 1 meter. It registers depths less than 1 meter as 0. At depths over 50 meters, the hand stops on the Over Zone Mark (53 minutes) and remains there until returning to depths less than 50 meters.

Measurements and Range

Display range: 0 m to 50m
Display increment: 1 meter
Measurement interval:
Once/second

[Maximum depth memo function]

This watch automatically records the maximum depth reached during a dive (in 1 meter increments). This memo is retained until the watch is set to the Diving Mode again and a depth of 1 meter or more is reached.



Calling the maximum depth memo

1. While in the Time Mode or Diving Mode (a depth of 0 is displayed) press button ②. The function hand A will display the maximum depth.
2. Pressing button ② a second time or leaving the memo displayed continuously for 30 seconds will release the maximum depth memo display.

- NOTE:**
1. A depth less than 1 meter is not recorded.
 2. The data in the maximum depth memo will be cleared when the battery reaches the end of its life. Be sure to record necessary memo information in a log book.
 3. The first time this function is used, it may display data that was used in product testing.
 4. Depths over 50 meters will be recorded as the Over Zone Mark.

[Additional functions]

<Auto return system>

The watch automatically returns to the Time Mode if the function hand remains at 0 meter for longer than 30 minutes in the Diving Mode.

<Abnormal activation prevention function>

If the depth meter is functioning abnormally for some reason, the function hand will point to the Over Zone Mark when the watch is switched to the Diving Mode, and depth measurement will not be possible. In such a case, switch back to the Time Mode.

[Making accurate depth readings]

1. Switch the watch to the Diving Mode shortly before diving.
2. When there is a great difference between the air and water temperature, immerse the watch in the water for 2-3 minutes before switching it to the Diving Mode.
3. Confirm that the mode hand points to DIV and the function hand points to 0 when the watch is switched to the Diving Mode. If the hands are in the wrong position please refer to "ALL RESET".
4. Avoid too rapid descents and ascents when diving. The function hand will not adjust quickly enough during descents or ascents faster than about 1 meter per minute. Slowdown or stop in order to obtain an accurate depth reading.

*** Never pull out or turn the crown or press the buttons while diving. Doing so may cause water to penetrate the case.**

[High altitude & freshwater diving]

When the Diving Mode is activated, the depth is calibrated at 0 meter based on the surrounding air pressure. This enables the watch to be used while diving at high altitudes and/ or in lakes, as long as the Diving Mode is activated at that altitude.

However, an accurate measurement is not possible at altitudes over 4,000 meters. Do not use this watch when diving in such places. Further, this watch displays changes in depth based on a standard of seawater (density 1.025). Depths indicated in fresh water will actually be about 2.5% over indicated.

Be sure to complete appropriate safety training before diving in fresh water or at high altitudes.

(Example) 20 meters (indicated depth) \times 1.025 = 20.5 meters (actual depth)

[Before diving]

1. Make sure that the crown is pushed all the way in and locked in place.
2. Make sure that there are no cracks or other damage to the watch band or the glass face. Damage to the band may result in the band breaking and loss of the watch.
3. Make sure that the band is firmly anchored to the watch body.
4. Make sure that the register ring rotates properly.
5. Make sure that the time and date are correctly set.
6. Make sure that the second hand is moving correctly.
 - * If the second hand is moving in 2-second increments, then the battery is low. Request battery replacement at the place of purchase, or by contacting a Service Center directly.

[After diving]

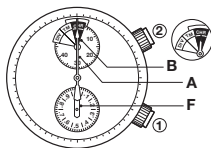
1. After making sure that the crown is locked in place, wash the watch free of seawater, mud and sand using fresh water. Wipe completely with a dry cloth.
2. Do not attempt to remove the sensor cover or remove any dirt or debris clogging the sensor portion of the watch using a sharp instrument. Rather, flush out such debris using fresh water. If this fails, please consult a Service Center.

Chronograph mode

Switch from the Time Mode to the Chronograph Mode by pressing button ① once.

About chronograph measurements

1. A maximum of 50 minutes may be measured by the chronograph. After 50 minutes (1/20 second = 0.05 second increments) measurement will stop automatically and chronograph will return to the reset position.
2. The chronograph 1/20 second hand will move for 30 seconds, after which it will return to stand-by at the 0 position. The time measured will be displayed when chronograph measurement is stopped.



The chronograph display

Please refer to the fold-out watch diagram located on this manual.

- A — Chronograph second hand**
B — Chronograph minute hand
F — Chronograph 1/20 second hand

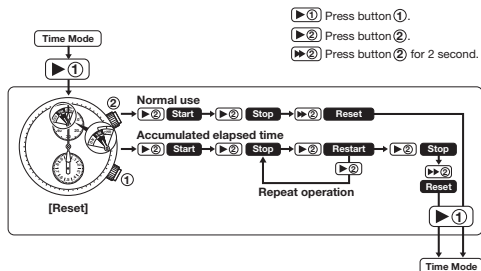
* When the watch has been switched to the Chronograph Mode but the hands A, B, & F do not point to 0, please readjust them as indicated in the "ALL RESET" instructions.

Additional functions

<Auto return system>

The watch automatically returns to the Time Mode if the chronograph reset display remains for longer than 3 minutes.

[Operating the chronograph mode]

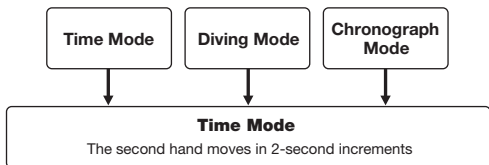


NOTE

The mode cannot be changed during a chronograph measurement. Change the mode after stopping measurement. Changing the mode will delete the data.

When the second hand moves in 2-second increments

When the battery is low, the low-battery warning indicator causes the second hand to move in 2-second increments. The Diving Mode and the Chronograph Mode will return to the Time Mode. Replace the battery soon.



NOTE

When the low-battery warning indicator is activated, the watch cannot be switched into the Diving or Chronograph Mode.

The Battery

a) Battery life

A new battery installed in this watch will last approximately 2 years.

[Standard usage conditions]

Number of dives: 30 dives / year

Duration of dives: 1 hour

Chronograph use 1 hour / day

* Battery life will vary greatly depending on the function used. Do not use the Diving Mode when no diving.

b) The original battery

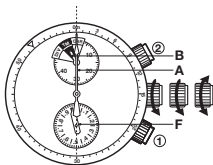
The battery in the watch at the time of purchase is one used to test the function and performance of the watch. Please be aware that this battery may not last for the 2 years estimated for normal batteries.

c) Battery replacement

1. All battery replacements should be done by Our Service Center. To replace the battery, please contact the place of purchase or contact a Service Center directly.
2. When replacing the battery, inspection of water resistance and other parts should be conducted, and packing materials replaced as necessary.
3. Battery replacement will result in deletion of data in the maximum depth memo. Be sure to record such data in a log book, etc. before replacing the battery.
4. Leaving a dead battery in the watch may cause damage due to leaking battery fluids.
5. Before using this watch for long periods overseas, battery replacement is recommended, as this service may be unavailable in some areas.
6. A charge for battery replacement and related inspection and parts replacement will be levied, even within the specified warranty period.

After the battery is replaced or if the hands are in the wrong position

Please refer to the fold-out watch diagram located on this manual. Use the following ALL RESET operation to adjust the position of the hands if:



In the Time Mode

The function hand A does not point to 12 H.

The mode hand B does not point to TM.

In the Diving Mode

The function hand A does not point to 0.

The mode hand B does not point to DIV.

In the Chronograph Mode

The chronograph minute hand B does not point to 0.

The chronograph second hand A does not point to 0.

The chronograph 1 / 20 second hand F does not point to 0.

The display is abnormal in any other way.

[Using ALL RESET & adjusting the position of the hands]

1. Unscrew the crown to release it, and pull it out two steps.
2. Simultaneously press button ① and button ② and then release them. ALL RESET is complete if the function hand moves slightly.
3. Pressing button ② will allow the mode hand B and the function hand A to move simultaneously. Set both of these to the 0 position. Move the two hands forward rapidly by pressing button ② continuously.
4. Align the second hand F in the 0 position by pressing button ①. Move it forward rapidly by pressing button ① continuously.
5. Set the correct time. Refer to instructions on setting the time and date.
6. Push the crown back to its original position, press down and turn it to screw lock it back in place. The watch will restart in the Time Mode.

Other function

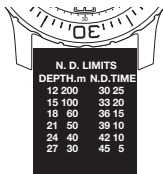
[No decompression limits]

The range of time when it is unnecessary to stop to decompress while surfacing from a dive is determined by depth and time of the dive. These values are referred to as "No Decompression Limits." Use these as estimates when diving.

No Decompression Limits, based on the American Navy Diving Manual (1985), are printed on the band of this watch. (Some models may not have this chart.)

<Reading the chart>

DEPTH.m (Maximum depth m)	N.D.TIME (Time)
12m	200min.
15m	100min.
18m	60min.
21m	50min.
24m	40min.
27m	30min.
30m	25min.
33m	20min.
36m	15min.
39m	10min.
42m	10min.
45m	5min.



N. D. LIMITS	
DEPTH.m	N.D.TIME
12	200
15	100
18	60
21	50
24	40
27	30
30	25
33	20
36	15
39	10
42	10
45	5

Example:

If the diver is at 21 meters for 50 minutes or less, then it is OK to surface without stopping to decompress.

Specification

1. ModelAnalog depth meter with chronograph
2. Accuracy of time measurements
..... ± 20 seconds / month (within normal temperature range)
3. Accuracy of depth readings
.....1m ~ 10m: ± 1 m
11m ~ 50m: ± 2 m
(Conditions: constant temperature and excluding margin of error by sight)
* Assured accuracy temperature range:
10°C~40°C/50°F~140°F
Accuracy of depth readings is affected by surrounding temperatures.
4. DisplayAnalog hand display
Time: hour, minute, second & function hands
Depth: depth hand & mode hand
Chronograph: chronograph minute hand, chronograph second hand & chronograph 1 / 20 second hand
5. Timepiece operational temperature range
.....-10°C~+60°C/14°F~140°F
6. Display functions
.....
 - Time (hours, minutes, seconds)
 - Date (with fast adjustment function)
 - Present depth indicator:
1m~ 50m(1m increments); Depth less than 1m indicated as 0m
 - Depth over display:
When depth is more than 50m
 - Maximum depth memo display:
1m~ 50m
 - Chronograph display:
Maximum measured display 50 min (1/ 20 second (0.05 sec) increments)
7. Additional Functions
.....
 - Low battery warning function
 - Prevention of function during malfunction state
 - Second hand stopping device
8. BatterySR927W
9. Battery lifeApproximately 2 years
Estimated conditions of use
 - Number of dives: 30 dives / year
 - Duration of dive: 1 hour
 - Chronograph measurement: 1 hour / day

These specifications are subject to change without notice.

CARE AND MAINTENANCE

Important note: Many **DEEP BLUE** watches have screw-in crowns and/or buttons that must be kept screwed in tightly to prevent moisture from entering the case. Before exposing the watch to moisture always ensure crowns and buttons are properly screwed in; the warranty does not cover damage caused by water infiltration resulting from failure to completely screw in crown or buttons or from leaving crown out (on models without a screw-in crown).

DEEP BLUE watches should be serviced every 3-5 years, as a general rule, to ensure optimal performance. Routine maintenance includes complete disassembly, cleaning, reassembly and lubrication of the movement by a professional watch technician. For quartz watches, consult a professional watch repair center for battery replacement.

Preventive maintenance

- Avoid placing the watch on speakers, refrigerators or other electronic equipment with strong magnetic fields.
- Always rinse the watch with warm water after swimming.
- Avoid thermal or other types of shocks.
- Screw in crown carefully to ensure no water enters the mechanism.
- Clean metal bracelets and water-resistant cases with a toothbrush and soapy water; use a soft cloth for drying.
- Avoid direct contact with all chemical products: solvents, detergents, perfumes, cosmetic products etc., since they may damage the bracelet, case or gaskets.
- Avoid extreme temperatures or steam.
- Every **DEEP BLUE** watch will remain water resistant providing crown, buttons, crystal, case and gaskets remain intact. Have the water resistance of the watch checked once a year by an authorized **DEEP BLUE** service center or professional watch technician.

Gas release valve (select models only)

- **HELIUM VALVE.** The outer visual part of the gas valve is a safety protective locking crown to protect the gas valve. user is highly recommended to lock it at all times when not using the watch in the helium gas decompression chamber or living chamber. Even though the protective locking crown is unlocked, the watch can still resist to 1000M SWP.
- The valve will release gas when internal pressure reaches to about 5 bars. If ascending within 30 meters water-depth from the helium breathing chamber (Or decompresses within 3 bars in the chamber), it is not necessary to open the protective locking crown.
- Always rinse the watch (with protective crown opened) with warm fresh water after the protective was opened in smutty water or sea water. dry up before locking the crown.

LIMITED ONE YEAR WARRANTY

DEEP BLUE watches are warranted against material or workmanship defects for one year from the date of purchase. On presentation of the warranty card, duly filled out, dated and signed by an authorized **DEEP BLUE** dealer, and proof of purchase, **DEEP BLUE** will restore your watch to perfect working order free of charge. **DEEP BLUE** will repair or replace, at the company's option, the movement of the timepiece if such movement proves to be defective. This warranty does not cover watch damage caused by accidents, misuse, neglect, careless handling or unauthorized tampering and is void if the watch is opened, taken apart or is serviced by any party other than an authorized **DEEP BLUE** service center. This warranty does not cover batteries, leather straps, bracelets, crystals or cases. Any other warranty provided by a retailer is entirely their responsibility. No person or company is authorized to change the terms of this warranty. This warranty gives you specific legal rights. You may also have other statutory rights which may vary from state to state. **DEEP BLUE** is not liable for any incidental or consequential damages occurring from the failure or malfunction of your watch and any recovery may not exceed the dollar amount paid for the timepiece. No other claims under warranty other than those explicitly indicated herein will be admitted.

For more information, contact:

DEEP BLUE New York, NY 212-213-5128

www.deepbluewatches.com email: info@deepbluewatches.com

PLEASE FILL OUT AND RETAIN FOR YOUR RECORDS:

NAME _____

ADDRESS _____

CITY/STATE/ZIP _____

MODEL# _____

SERIAL# _____

DATE OF PURCHASE _____

RETAILER _____