



All seam allowances included.

Tape pattern together by overlapping on the gray areas.

DO NOT tape bottom section to the main body piece, it is separate.

***Pattern is for personal use only, not to be duplicated or sold.**

Piece 3

Piece 2

Overlap for piecing pattern

Christina
McKinney
for
birch
organic fabric

Piece 1

Assemble pattern pieces
along marked edges.

Cut 2,
1 left & 1 right
(from main print)



Eye placement guide



Overlap for piecing pattern

1/4 Seam allowance

All seam allowances included.

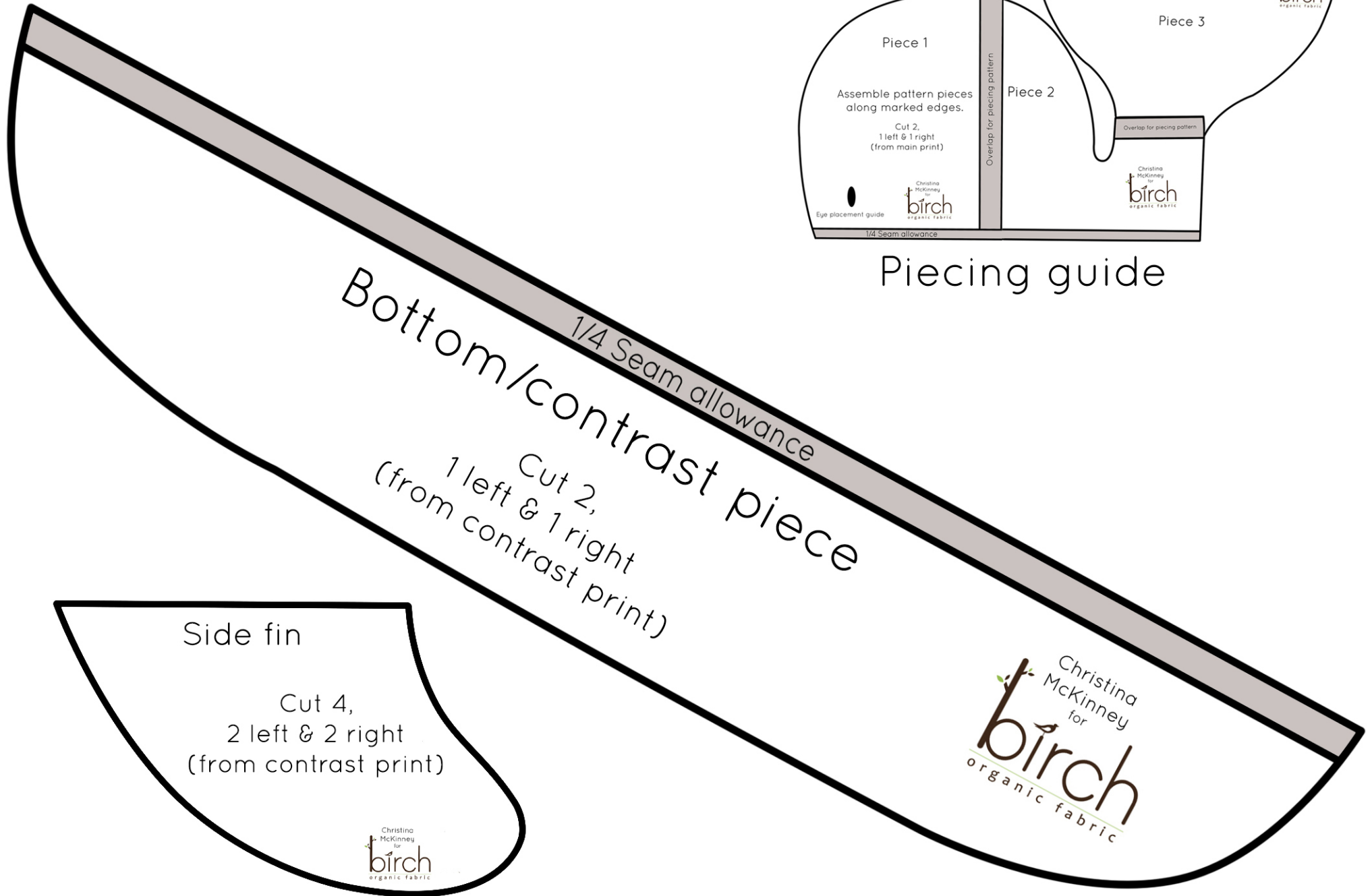
Tape pattern together by
overlapping on the gray areas.

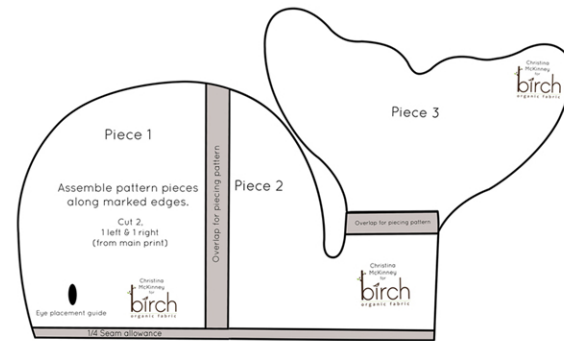
DO NOT tape bottom section
to the main body piece,
it is separate.

***Pattern is for personal use only,
not to be duplicated or sold.**

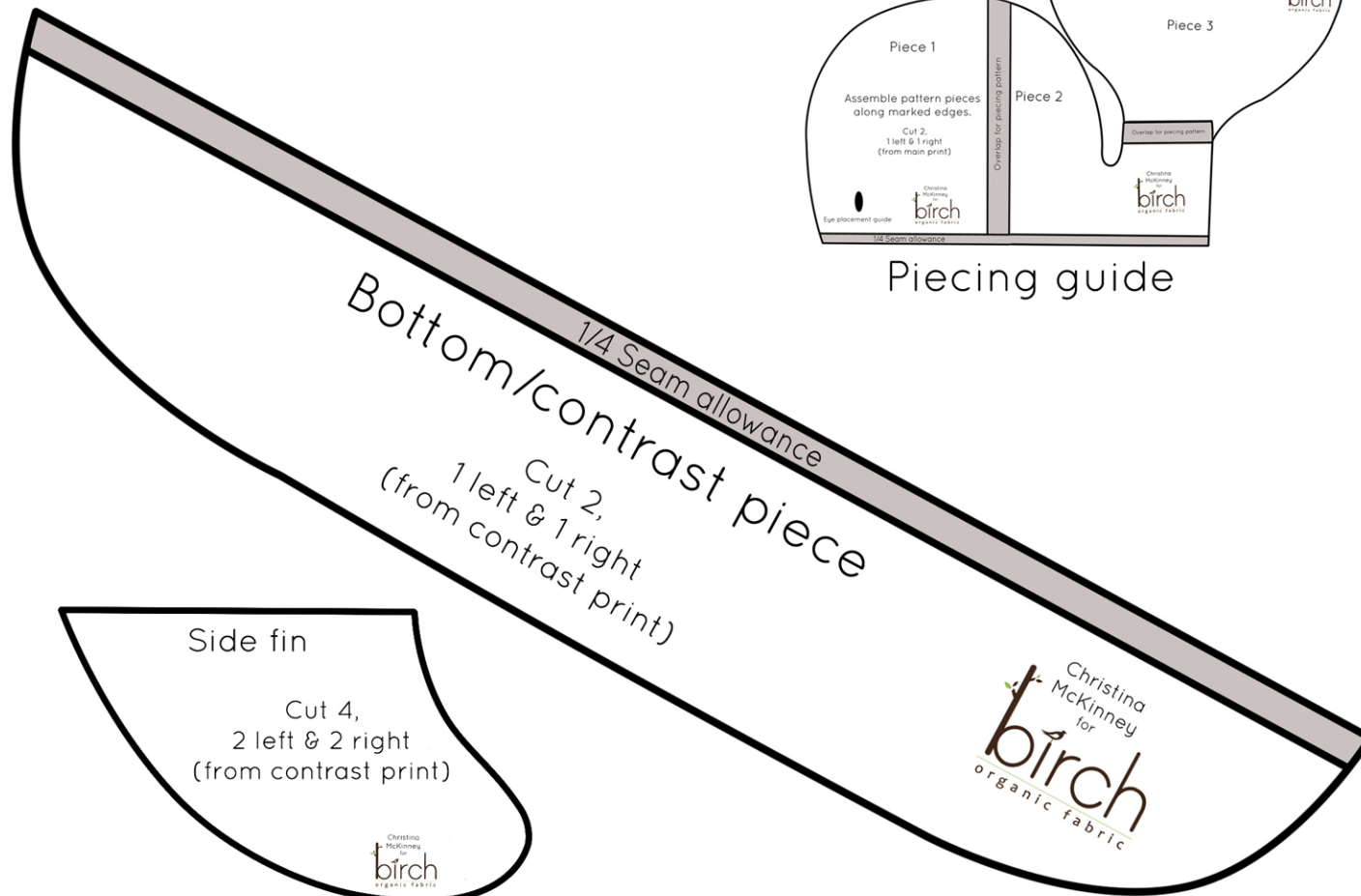


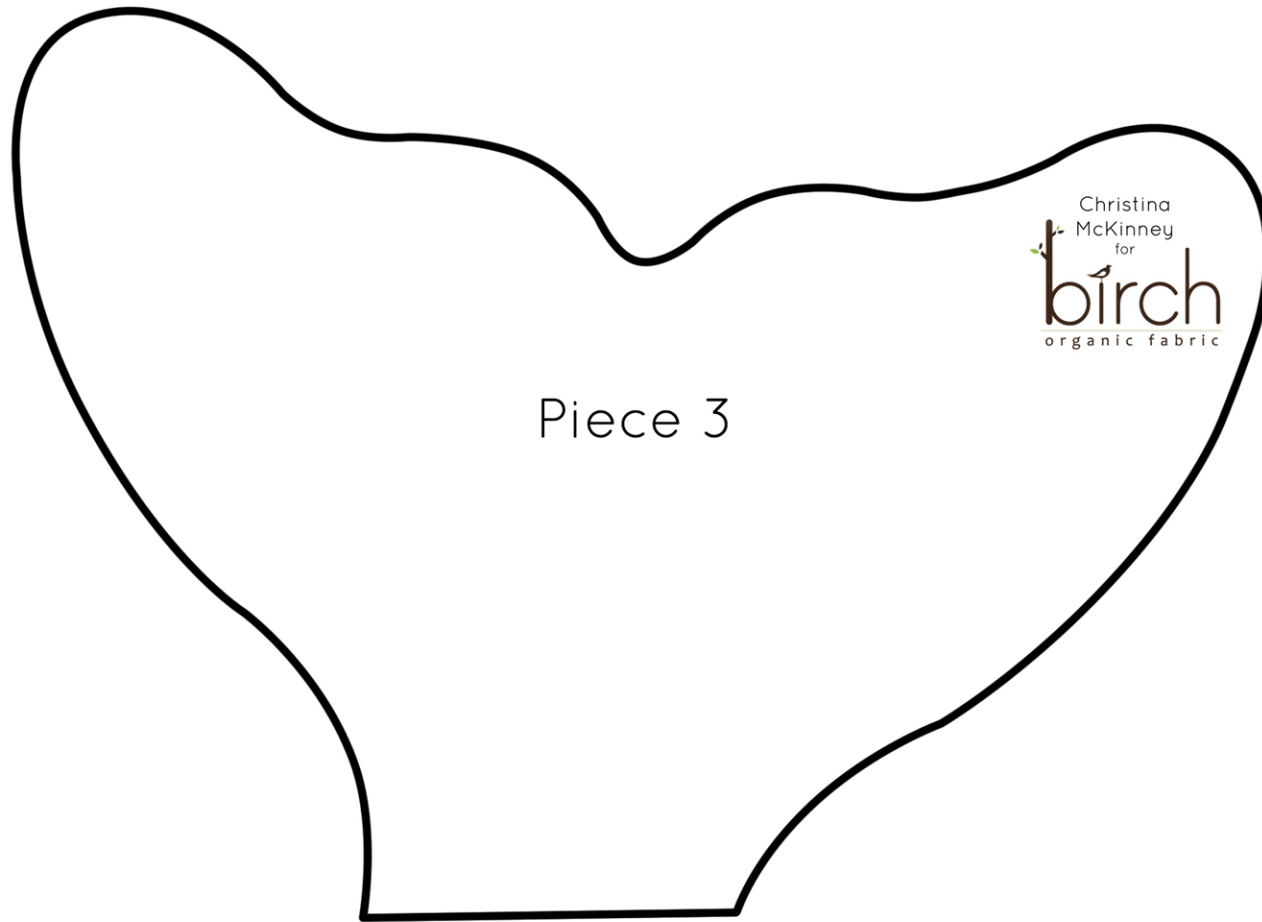
Piecing guide





Piecing guide





Piece 3

Christina
McKinney
for
birch
organic fabric

