

Vent-A-Hood®

INSTALLATION INSTRUCTIONS

EUROLINE/EUROLINE PRO ISLAND RANGE HOOD

WARNING - TO REDUCE THE RISK OF FIRE, ELECTRIC SHOCK, OR INJURY TO PERSONS, OBSERVE THE FOLLOWING:

- A. Installation Work and Electrical Wiring Must Be Done By Qualified Person(s) In Accordance With All Applicable Codes And Standards, Including Fire-Rated Construction.
- B. When cutting or drilling into wall or ceiling, do not damage electrical wiring and other hidden utilities.
- C. Ducted fans must always be vented to the out-doors.
- D. Sufficient air is needed for proper combustion and exhausting of gases through the flue (chimney) of fuel burning equipment to prevent back drafting. Follow the heating equipment manufacturer's guideline and safety standards such as those published by the National Fire Protection Association (NFPA), and the American Society for Heating, Refrigeration and Air Conditioning Engineers (ASHRAE), and local code authorities.

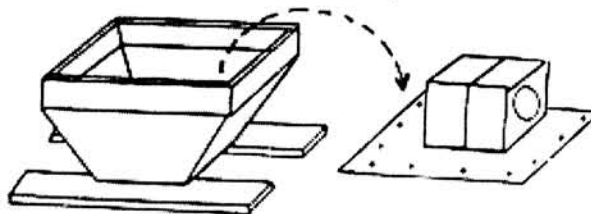
WARNING - TO REDUCE THE RISK OF FIRE, USE ONLY METAL DUCTWORK.

Read and Save These Instructions

All Hoods Should Be Installed By A Qualified Installer

Step 1 . . .

Set hood on floor with wood pallet still attached to top.

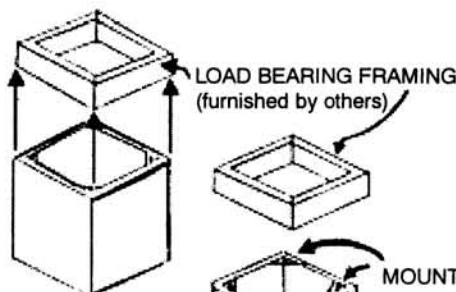


Step 2 . . .

Remove blower deck and unplug electrical harness. Fluorescent light hoods also require removal of the light boxes.

Step 3 . . .

Install duct cover to load bearing framing in ceiling. For additional stability in duct covers over 24" tall, use 1/4" all-threaded rods.

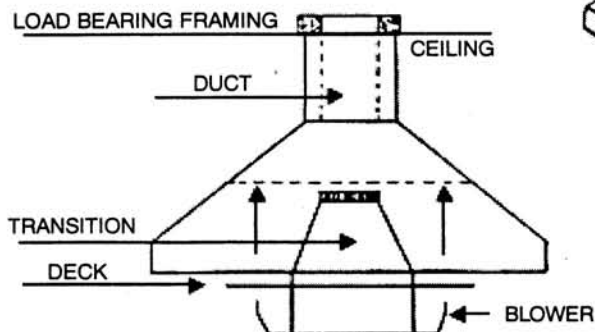
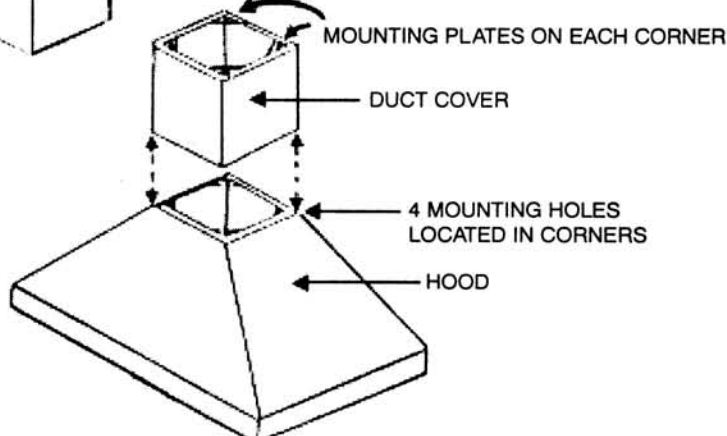


Step 4 . . .

Run duct and wiring through ceiling with section long enough to reach transition on hood.

Step 5 . . .

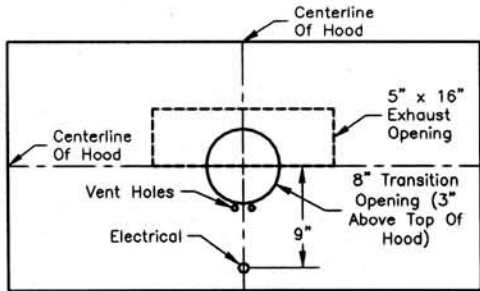
Attach hood to bottom of duct cover and re-install blower and light units.



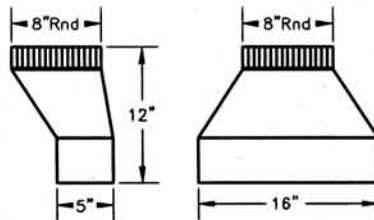
Turn Page For More Instructions

Step 6. — Connect ducting.

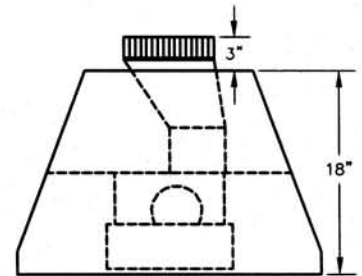
Attach venting (before replacing deck if necessary.) Do not restrict ducting anywhere including roof jacks or wall louvers. Do not turn sharp turns with ducting. Make gradual turns or 45 degree angles.



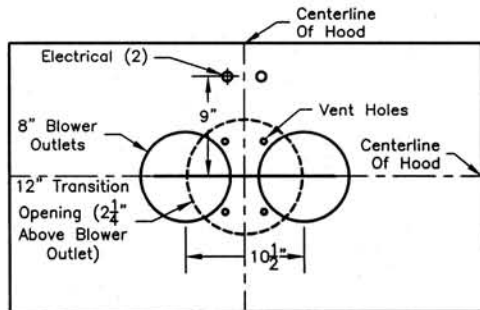
**T200 Dual Blower
Top View**
(EPI18/EPIH18/SEPI18/SEPIH18/ISD18/ISDH18)



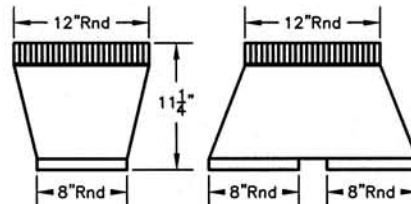
**VP546 Standard Transition
(Included)**



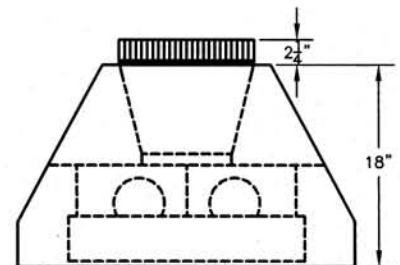
**Transition Installed
Side View**



**T400 Cluster Blower
Top View**
(EPIT18/EPITH18/SEPIT18/SEPITH18)



**VP564 Standard Transition
(Included)**



**Transition Installed
Side View**

Step 7. — Connect electrical.

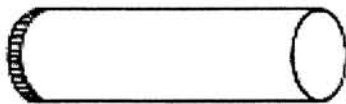
Follow label instructions and remove motor plate. Unplug motor and remove, being careful to not damage blower wheel. Connect electrical, black to black, white to white and ground to lug provided. Replace motor(s) and don't forget to plug them back in. Replace blower front and be sure it is secured properly and blower wheel(s) turn freely. Model T200, 3.4 Amps, T400 6.8 Amps. Add 2.0 Amps for hoods with halogen lights.

Observe All Governing Codes and Ordinances

Caution: To reduce the risk of fire or electrical shock, do not use this fan with any solid state variable speed control device.

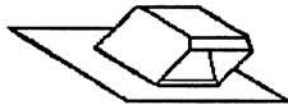
Venting Materials Available from Vent-A-Hood

Round Vent Duct



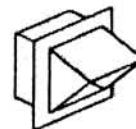
VP502 8" Round

LP Roof Jack



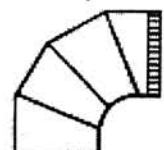
VP541 8" Round
VP553 12" Round

Wall Louver



VP528 8" Round
VP555 12" Round

Adjustable Elbow



VP515 8" Round