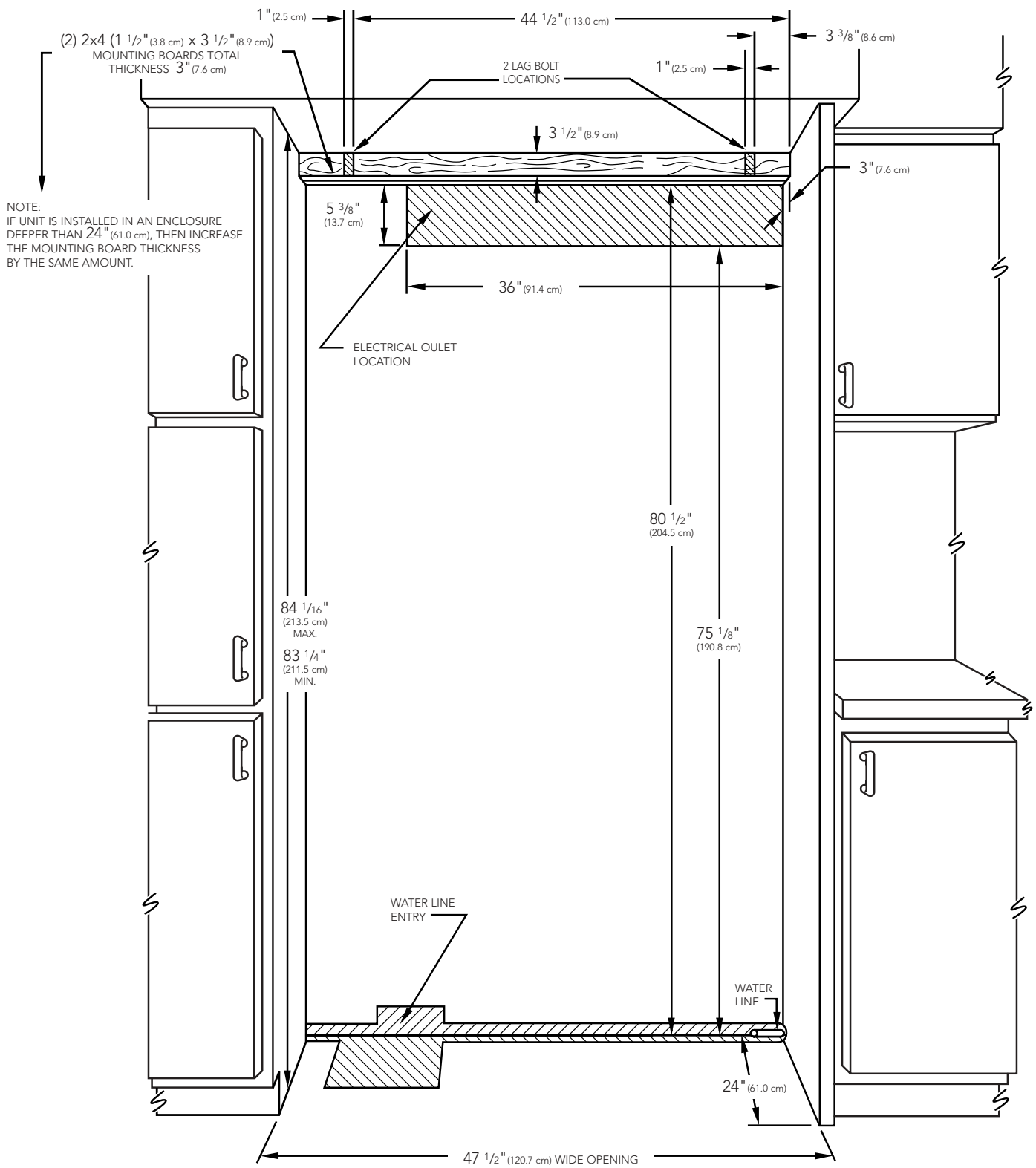


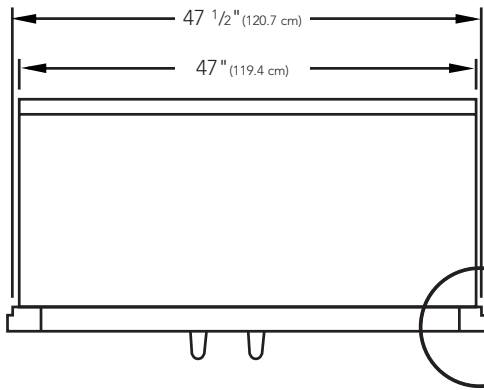
VCSB 48" wide side-by-side refrigerator/freezer with dispenser – dimensions

Cutout

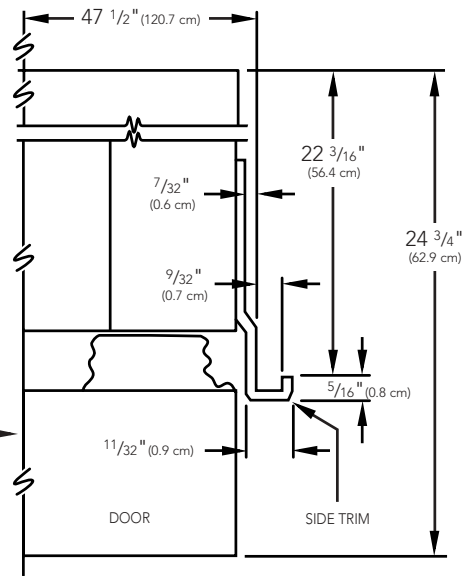


VCSB 48" wide side-by-side refrigerator/freezer with dispenser – dimensions

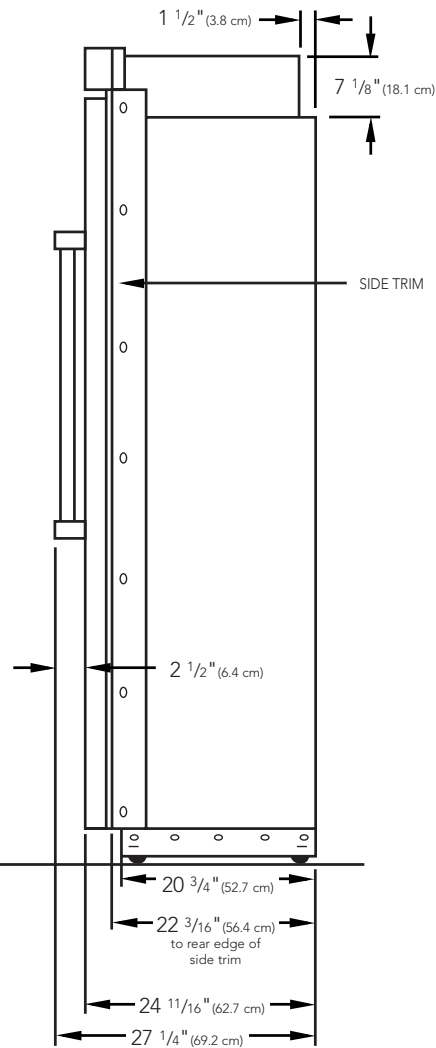
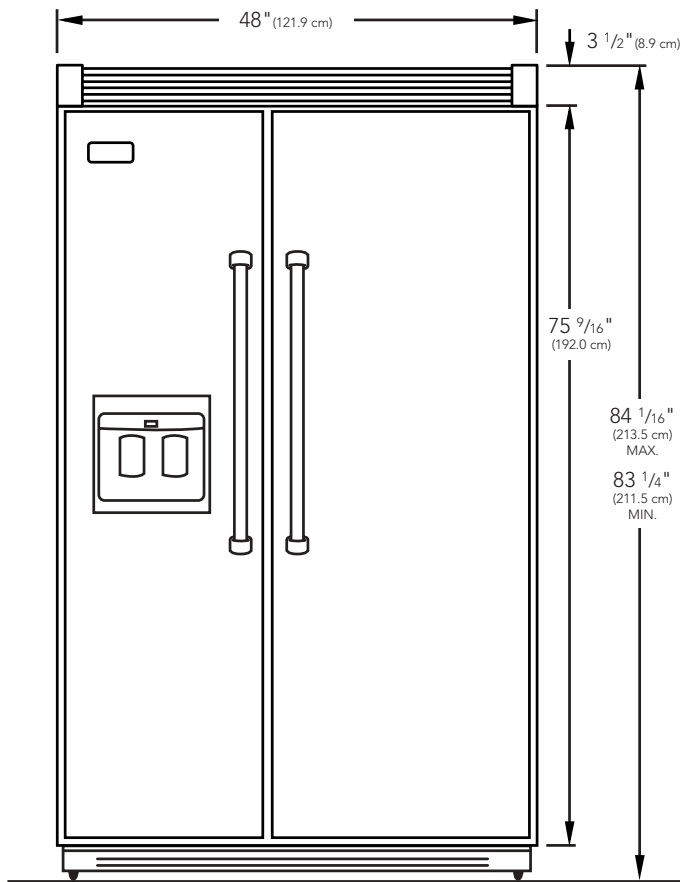
Overhead



Side



Front



Basic specifications

Description	48" WIDE SIDE-BY-SIDE WITH DISPENSER
	VCSB483D
Overall Width	48" (121.9 cm)
Overall Height from Bottom	Minimum 83 1/4" (211.5 cm); Maximum 84 1/16" (213.5 cm)
Overall Depth from Rear	To rear edge of side trim – 22 3/16" (56.4 cm) To front of top grille – 24 11/16" (62.7 cm) To end of handle bracket – 27 1/4" (69.2 cm)
Cutout Width	47 1/2" (120.7 cm)
Cutout Height	Minimum 83 1/4" (211.5 cm); Maximum 84 1/16" (213.5 cm)
Cutout Depth	24" (61.0 cm)
Electrical Requirements	115VAC/60Hz – 5' (152.4 cm); 3-wire cord with grounded 3-prong plug attached to product
Maximum Amp Usage	11.5 amps
Inlet Water Requirement	1/4" copper tubing – Minimum 20 psi; Maximum 120 psi
Overall Interior Capacity	Refrigerator – 17.9 cu. ft. (506.9 L); Freezer – 8.5 cu. ft. (240.7 L); Total capacity – 26.4 cu. ft. (747.6 L)
Approximate Shipping Weight	650 lb. (292.5 kg)