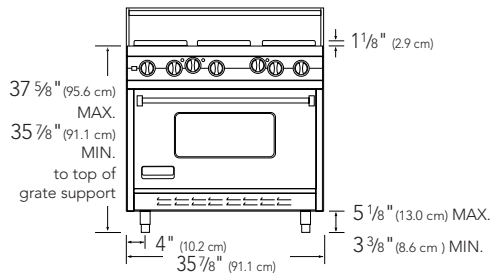
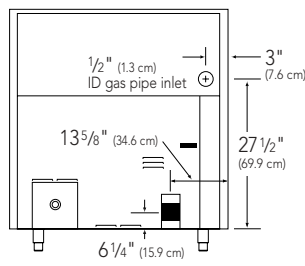


VDSC dual fuel 36" wide sealed burner range – dimensions

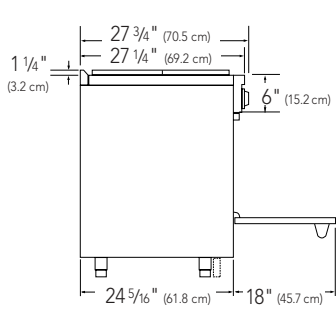
Front



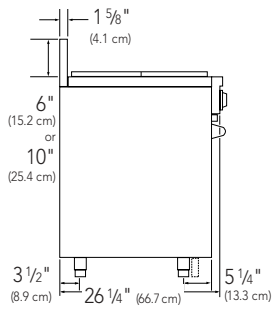
Rear



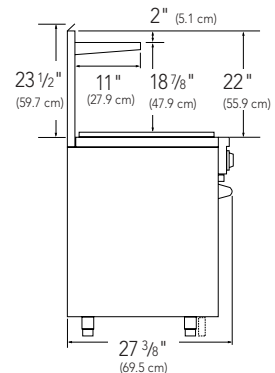
Side



With island trim

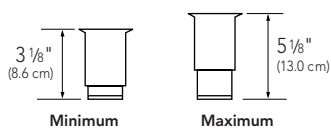


With backguard

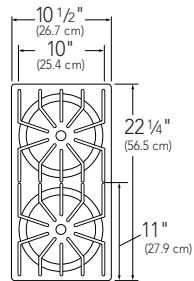


With high-shelf

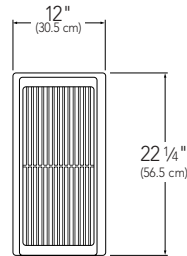
Adjustable legs



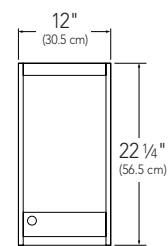
Surface burners



Grill



Griddle/simmer plate



Basic specifications

| Description | 36" WIDE DUAL FUEL SEALED BURNER RANGE |
|--|--|
| | VDSC367 |
| Overall Width | 35 7/8" (91.1 cm) |
| Overall Height from Bottom | <p>Base Height To top of grate support – min. 35 7/8" (91.1 cm) to max. 37 5/8" (95.6 cm); legs adjust 1 3/4" (4.5 cm)</p> <p>Additions to Base Height To top of spider grate – add 1 1/8" (2.9 cm), to top of island trim – add 1 1/4" (3.2 cm), to top of 6"H. backguard – add 6" (15.2 cm), to top of 10"H. backguard – add 10" (25.4 cm), to top of high-shelf – add 23 1/2" (59.7 cm)</p> |
| Overall Depth from Rear | To end of side panel – 24 5/16" (61.8 cm), to end of control panel – 26 1/4" (66.7 cm), to end of knobs – 27 3/4" (70.5 cm) |
| Gas Requirements | Shipped natural gas standard; field convert to LP/Propane with standard convertible regulator; accepts standard residential 1/2" (1.3 cm) ID gas service line |
| Electrical Requirements | 240 – 208/120VAC/60Hz; Electrical connection box on product; connect with locally supplied 3-wire, flexible cord rated 40 amp; 125/250VAC minimum; must be agency-approved for use with household electric ranges* |
| Maximum Amp Usage | 6B – 240V – 17.9 amps, 208V – 15.5 amps 4G – 240V – 19.5 amps, 208V – 16.9 amps 4Q – 240V – 17.9 amps, 208V – 15.5 amps |
| Surface Burner Rating | 15,000 BTU NAT./13,500 BTU LP (4.4 kW NAT./4.0 kW LP) |
| Griddle Burner Rating | 15,000 BTU NAT./13,500 BTU LP (4.4 kW NAT./4.0 kW LP) |
| Grill Burner Rating | 18,000 BTU NAT./16,000 BTU LP (5.3 kW NAT./4.7 kW LP) |
| Broil Burner Rating | Maxi-Broil – 8-pass: 240V – 3,000 watts; 208V – 2,250 watts; Mini-Broil – 4-pass: 240V – 1,250 watts; 208V – 940 watts; (VDSC485 Left oven – 4-pass broil only) |
| Bake Rating (partial power from broil element) | 240V – 3,440 watts; 208V – 2,580 watts |
| Convection Cook Rating | 240V – 2,200 watts; 208V – 1,650 watts |
| Oven Interior Dimensions | <p>Convection Bake/Broil Oven Width – 29" (73.7 cm) Height – 16 1/8" (41.0 cm) Depth – 15 3/8" (39.1 cm) Overall Size – 4.2 cu. ft. Three racks, six rack positions</p> |
| Approximate Shipping Weight | 6B – 465 lb. (209.3 kg), 4G – 475 lb. (213.8 kg), 4Q – 470 lb. (211.5 kg) |

*Canada model C VDSC has factory-installed, agency-approved 4 ft. power cord – 3-wire with ground, 4-prong plug – included.