

# Installation Instructions

## Tool Requirements:

- Tape measure
- Level
- Stud finder
- Drill with various bits
- Socket set
- Utility knife
- Magnetic extended screwdriver
- Phillips screwdriver
- Torx Bit
- Cardboard, carpet remnant or other protective material for flooring
- Steel Hanger Strap

## Installation Checklist:

### INSTALLER

#### Doors

- Handles are solidly attached to doors.
- Doors seal completely to refrigerator cabinet.
- Assure correct door handle alignment. Frame models.
- Assure door seals are not pinched.
- Do not drive screws / sharp objects into the doors.

#### Leveling

- L Brackets are secure to 2x4 wood block.
- Stabilizing legs are against floor. Cabinet is secure.
- Toe kickplate is properly attached to refrigerator and aligned with floor.

#### Icemaker

- Water supply to refrigerator is turned on and lines flushed.
- Water leaks are not present at connection between household water supply and refrigerator.
- Icemaker arm is down for ice production.
- PuriClean® Ice and Water Filtration System is installed correctly, if applicable.
- Purge water from the fountain on dispenser models.

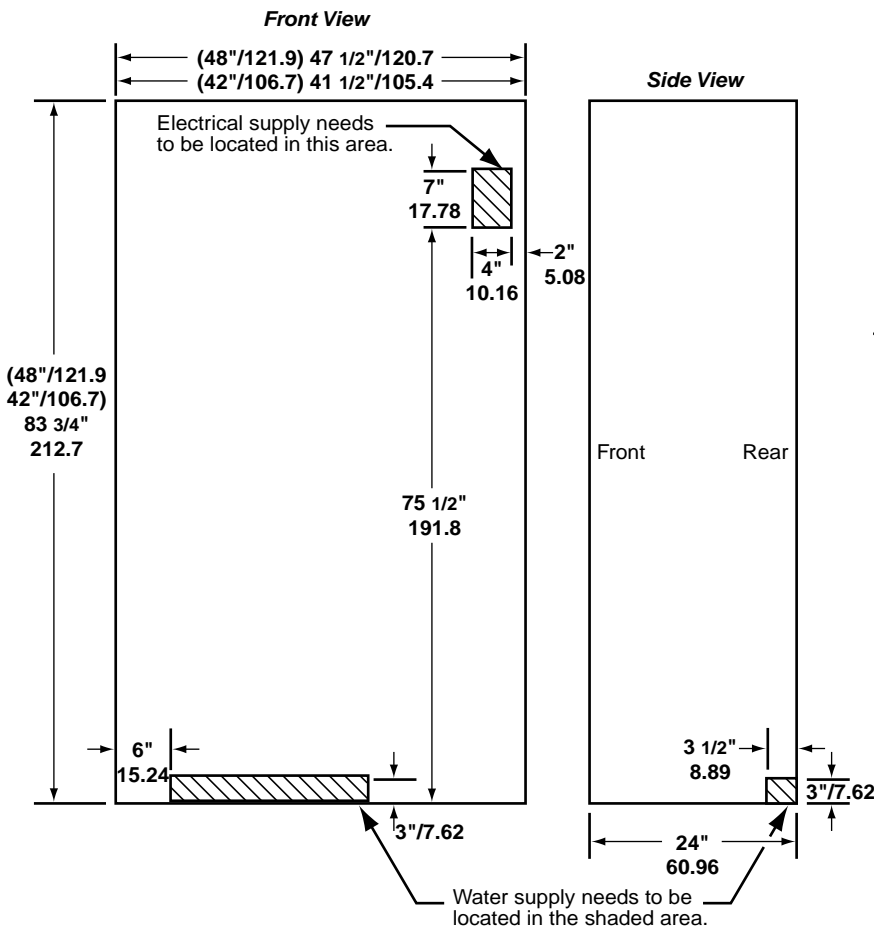


Fig. 1

### Preparing the Space:

Make sure the opening where the unit will be installed, is properly prepared for "Cut Out" dimension. Check placement for electrical outlet and water line. (Fig. 1)

### NOTE:

For the door to open properly, it must be able to open at least 90 degrees. For installation in a corner, a 2" filler strip is required to ensure the 90 degree opening. The floor under the refrigerator is to be level with the surrounding floor. To protect the floor when moving the refrigerator, place cardboard, or preferably a carpet remnant (backing up) on the floor.

### ⚠ WARNING: Electrical Connection:

This appliance is designed to operate on a normal 115 volt, 15 amp, 60 cycle line. There should be a separate, grounded circuit serving this appliance only. Do not use an extension cord. Do not use any device that will alter the electrical performance of this appliance. For the placement of the electrical outlet refer to Fig. 1.

**\*Do not use a ground fault circuit interrupter.**

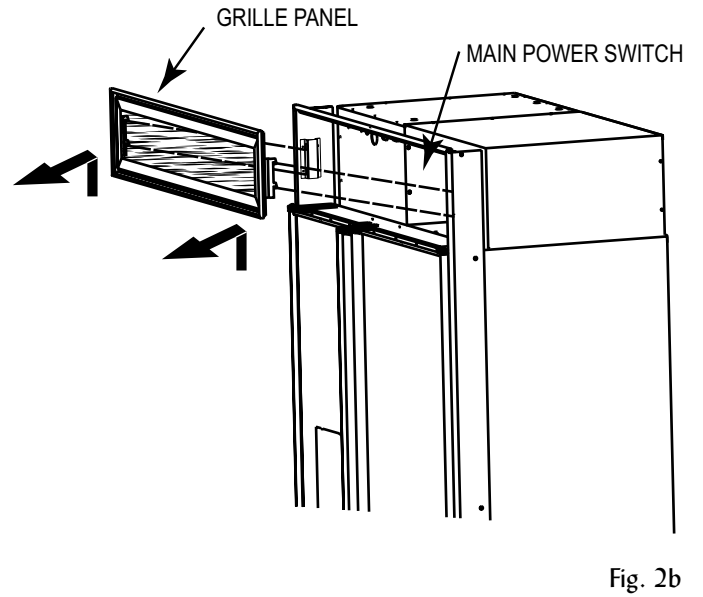
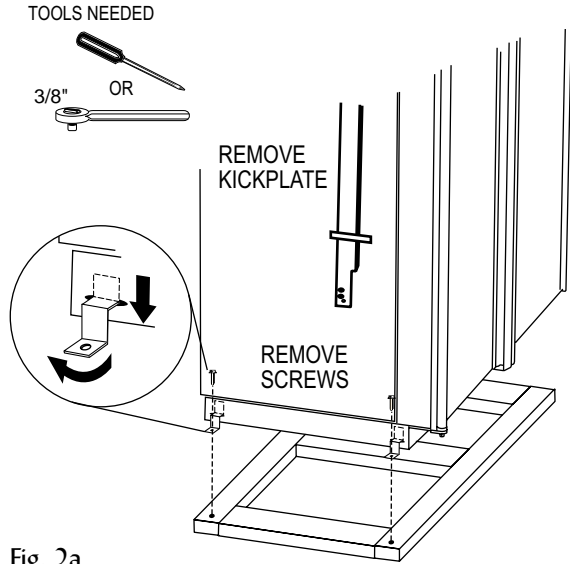
### Plumbing Connection:

Rough in the water line for the location (Fig. 1). Connect a 1/4" copper line to the house supply. Use a shut off valve between the refrigerator and supply. The shut off should be a drilled saddle valve. Do not use a self-tapping valve. The icemaker operates on 30 to 120 PSI. Route the water line within a 1/2" of the wall and no higher than 3" from the floor. Allow at least 3' of excess copper tubing outside the wall or floor for easy connection to the water valve. \* Prior to connection assure that the water supply and the copper tubes have been flushed until the water runs clear.

**Reverse Osmosis:** Remove the water inlet connector from the 'Yellow' valve and attach to the 'Blue' valve. Assure that the water filter bypass plug is in place (See Fig. 3). Disconnect wires from Yellow Valve.

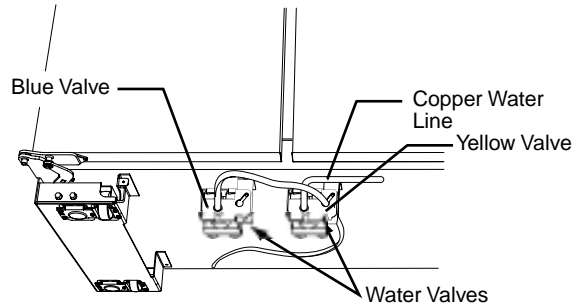
## Uncrating the Unit:

Uncrate the unit. Remove the lower shipping bolts and brackets. Slide the unit off of the crate base. Remove and save the lower kick plate, anti-tipping brackets and mounting hardware. (Fig. 2a) Remove the grille, this will help when moving the unit. (Fig. 2b)



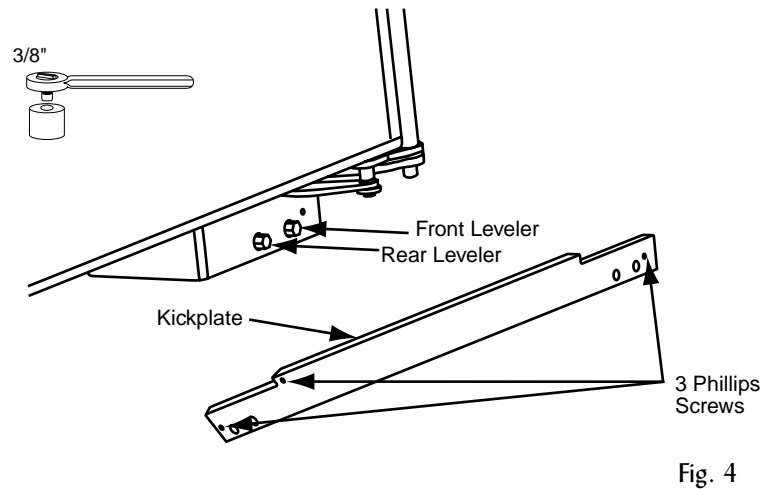
## Water Line Installation:

Connect the water supply to the water valve. Turn the water on and check for leaks. Plug the unit in. (Fig. 3)



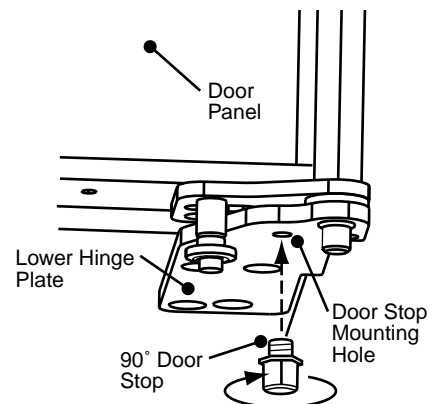
## Leveling:

Slide the unit in place and raise the front and rear levelers until the unit touches the brackets. Use a 3/8" socket for raising and lowering the unit. On each wheel housing there are two 3/8" hex bolts. On the left side, the outside bolt will move the rear leveler and the inside bolt will move the front leveler. On the right side, the outside bolt adjusts the front leveler and the inside bolt will move the rear leveler (Fig. 4). The front levelers must be in contact with the floor. To raise the leveling legs, turn the hex screw in the counter clockwise direction. Place a level on lower ledge of the machine compartment. Level the unit front to back and side to side. This is to prevent tipping of the unit (See Fig. 7). Install the kickplate. Locate the main power switch in the machine compartment and toggle the switch "On". Install the grille panel.



## 90° Door Stop

Both doors are designed to open 135°. To restrict one or both doors to a 90° opening use the door stops supplied in this kit. With the doors closed, screw a door stop into the underside of the lower hinge plate (Fig. 5).



### Blocking the Unit:

If there is a solid soffit above the unit and the clearance is 1" or less you will not need to block the unit. For installations with clearances of more than 1", you must use the anti-tipping 2x4 and brackets provided (Fig. 6).

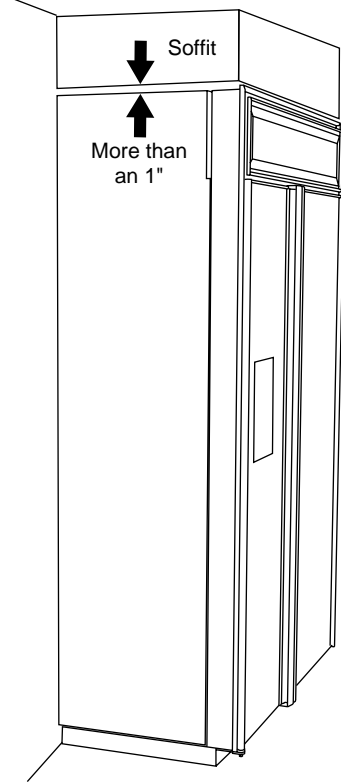


Fig. 6

### More than 1" clearance:

Use the anti-tipping kit provided with the shipping crate. Locate and mark the 2 wall studs behind the unit. Mark where the "L" brackets and 2x4 will be located and drill 2 pilot holes 1/8". Locate the proper height to clear the unit. The space between the top of the unit and bottom of the wood block must not exceed 1/4". Secure the "L" brackets, using the provided screws, into the wall studs (①). Make sure the screws will extend 7/8" into the wall studs. Align the pilot holes with the "L" brackets and secure the 2x4 with the screws provided(②,③).

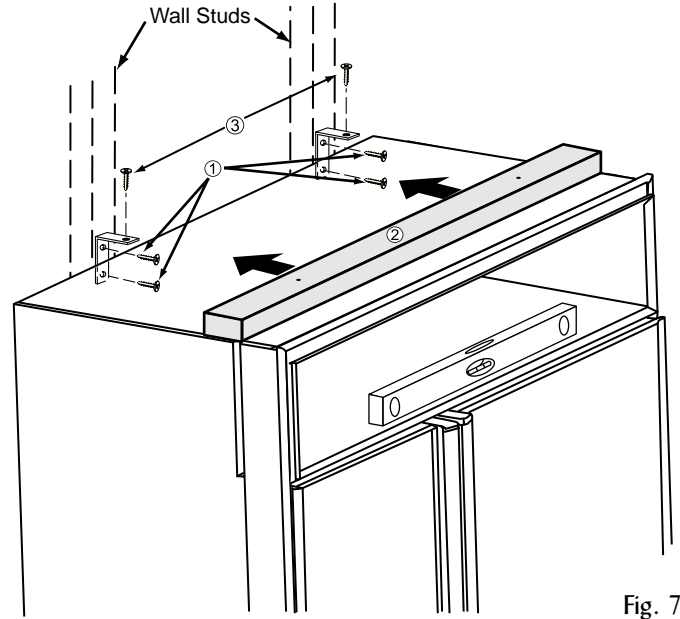


Fig. 7

### Installing Backer Panels:

Remove the door handle or trim piece on overlay models. A magnetic backed molding hides the handle or overlay trim screws. Use the adhesive side of the packaging tape on the magnetic backed molding to pull it away from door (Fig. 8a). Remove the screws with a phillips screwdriver (Fig. 8b). Slide the backer panel into position. The backer panel needs to be under the trim. Install the handle. Replace the molding in the channel, and reset the magnetic backed molding. To install the backer panel on the grille remove the screws on the top and bottom of the upper cover (Fig 8c). DO NOT REMOVE the foam. Slide the backer panel into place and replace screws (Fig 8d). If the thickness of the backer panel is less than a 1/4", back it up with a sheet of shim material to obtain a 1/4" thickness. Cardboard is recommended for Stainless Steel application. For panel size refer to Fig. 10.

**CAUTION:** Do not drive screws or sharp objects into the doors.  
Do not pinch door seal when reinstalling handle.

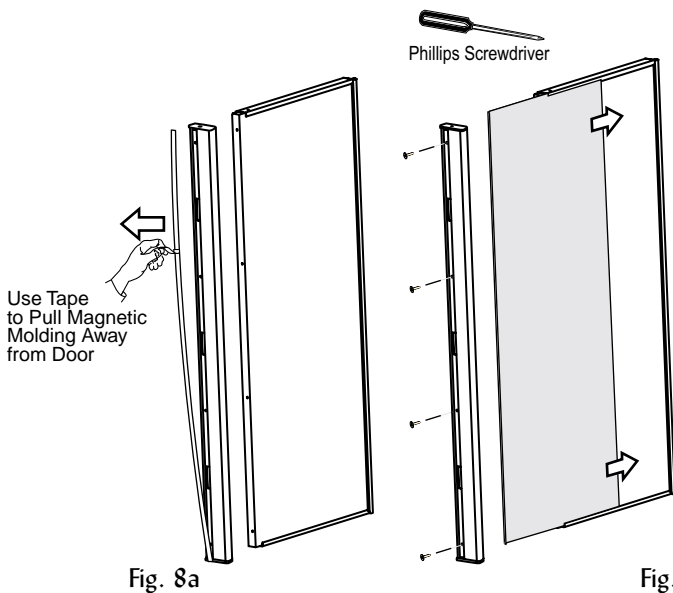


Fig. 8a

Fig. 8b

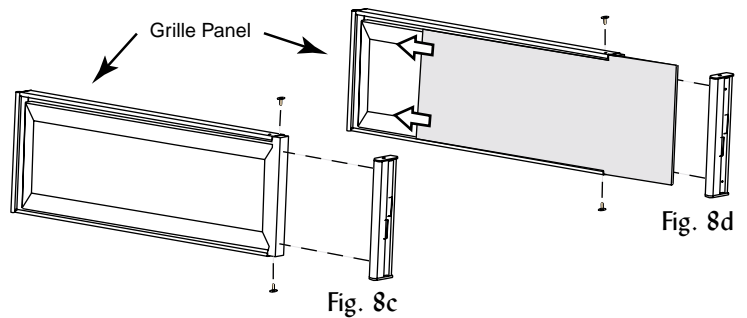
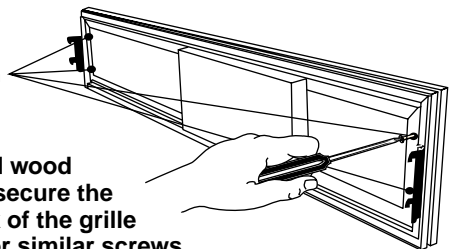


Fig. 8d

Fig. 8c

Approximate Position For Screws

**CAUTION:**  
When attaching a raised wood panel of 1/2" or thicker secure the raised panel to the back of the grille cover frame. Use 4 #8 or similar screws. See illustration for approximate locations.



### Panel Installation for Dispenser Models:

See section "Installing Backer Panels" for handle / trim piece removal. With handle / trim piece removed slide upper and lower panels in position. To replace dispenser panels, slide out Spill Tray grille and remove 2 Torx screws (see inset). Insert replacement panel. Reinsert Torx screw and reinstall handle / trim piece. To replace second dispenser panel, open freezer door until 4 phillips screws that hold the door trim in place are accessible. Remove screws and slide out door trim. Close door and insert replacement panel. Reinsert Torx screw and reinstall door trim.

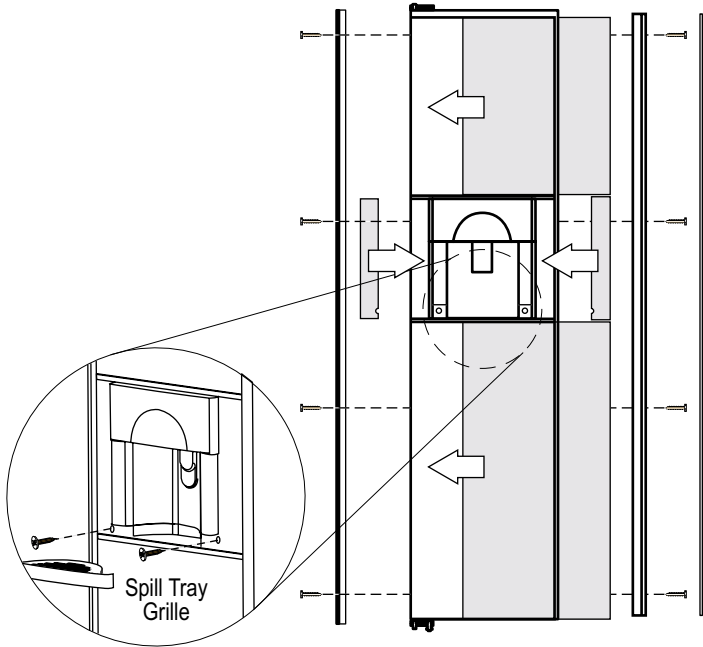


Fig. 9

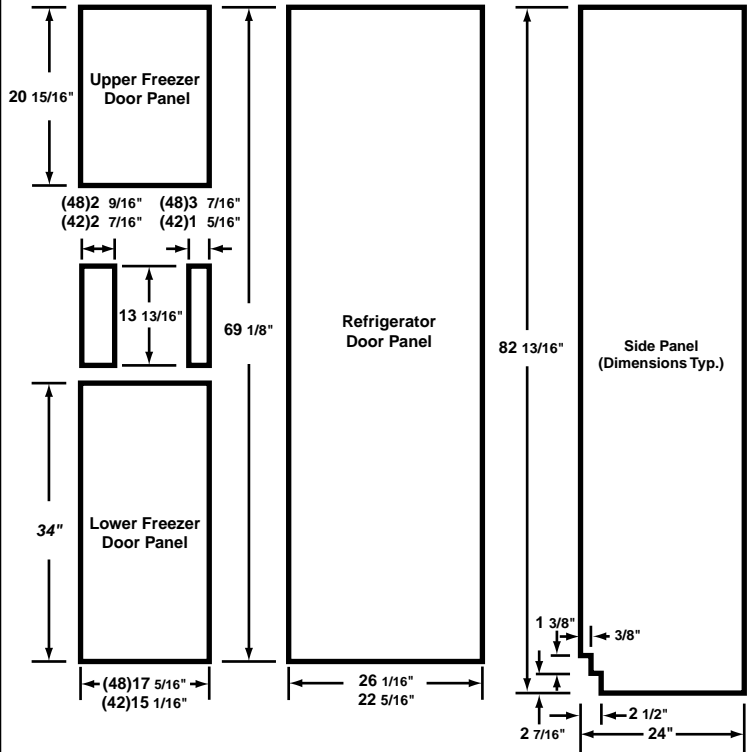
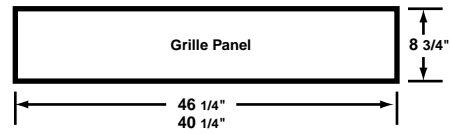
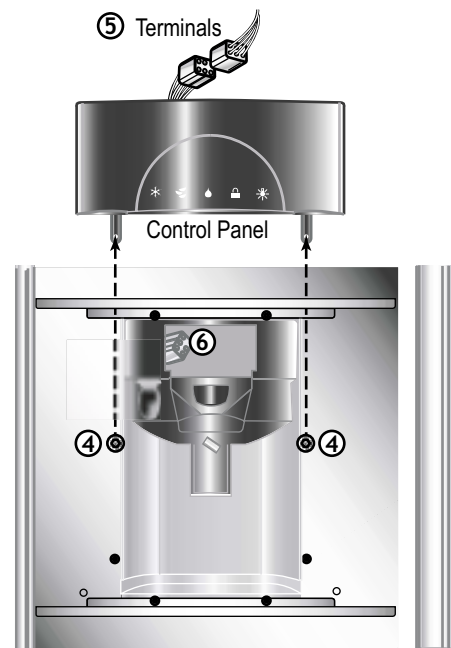
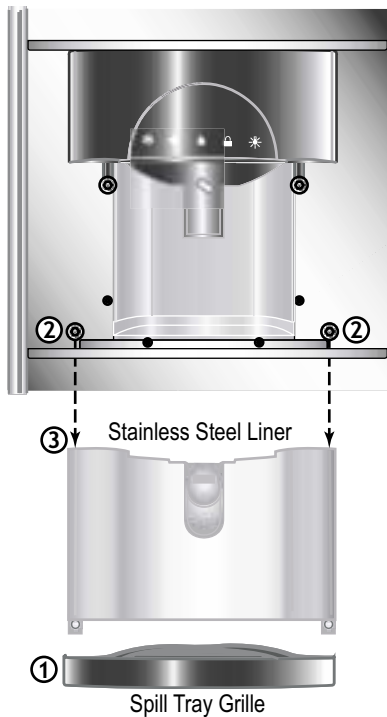


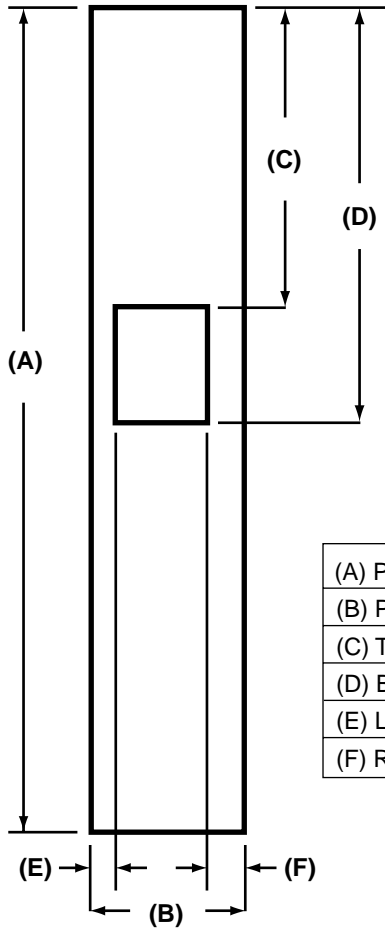
Fig. 10

### One-piece Overlay/Frame Panel Installation:

See Owner Manual for switching "OFF / O" the unit. Reference Fig. 9 for door panel removal and installation. With panels removed reattach hinge trim. Lift slide out Spill Tray grille and remove 2 Torx screws ①, ②. Remove stainless steel liner ③. Remove 2 Torx screws from the control panel ④. Slide control panel down to remove. Disconnect terminals on back of control panel ⑤. Tuck dispenser terminal inside to avoid interfering with one-piece panel ⑥. Open door and slide one-piece panel into position. Reconnect control panel to dispenser terminal. Reattach control panel with 2 Torx screws. Reposition stainless steel liner into track and secure with 2 Torx screws. Reinstall the Spill Tray grille and door trim. Turn unit on.



**Dispenser One-Piece Freezer Framed Panel**



(A) Panel Height
(B) Panel Width
(C) Top of dispenser cutout to top of panel
(D) Bottom of dispenser cutout to top of panel
(E) Left of dispenser cutout width
(F) Right of dispenser cutout width

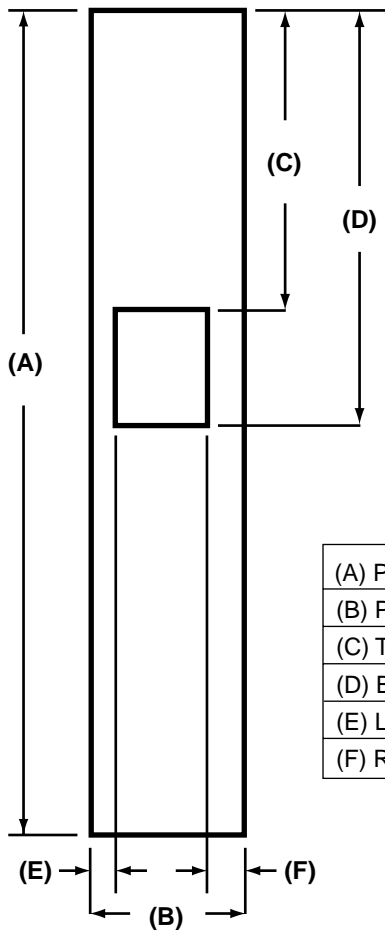
**42" Wide Cabinet**

Inches	Cm
69 1/8	175.6
15 1/16	38.26
20 5/8	52.39
35 7/16	90.01
2 7/16	6.19
1 5/16	3.33

**48" Wide Cabinet**

Inches	Cm
69 1/8	175.6
17 5/16	43.97
20 5/8	52.39
35 7/16	90.01
2 9/16	6.51
3 3/8	8.57

**Dispenser One-Piece Freezer Overlay Panel**



(A) Panel Height
(B) Panel Width
(C) Top of dispenser cutout to top of panel
(D) Bottom of dispenser cutout to top of panel
(E) Left of dispenser cutout width
(F) Right of dispenser cutout width

**42" Wide Cabinet**

Inches	Cm
69 1/8	175.6
16 7/16	41.75
21 3/16	53.82
34 13/16	88.42
2 1/16	5.24
2 1/4	5.72

**48" Wide Cabinet**

Inches	Cm
69 1/8	175.6
18 11/16	47.47
21 3/16	53.82
34 13/16	88.42
2 3/16	5.56
4 3/8	11.11

## Installing Side Panels:

Optional side panels need to be 1/4-inch thick. Slide panel into position and secure with screws indicated by the shaded area (Fig. 11a). A 3/16-inch batten is required between the cabinet and side panel (Fig. 11b). A 1/2-inch thick by 10 1/4-inch tall batten is required if the side panel extends up into the machine compartment area on the refrigerator side (Fig. 11c).

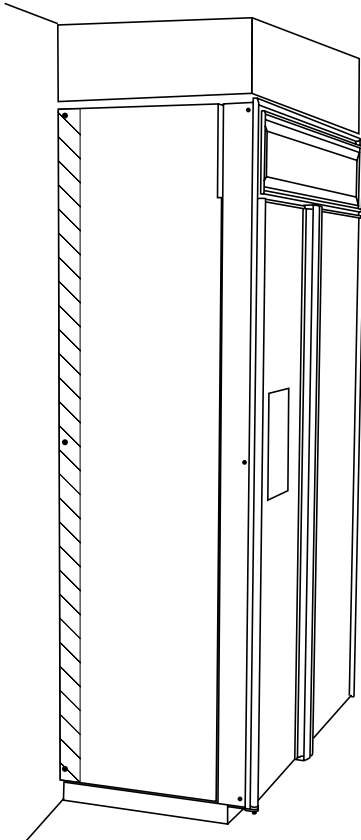


Fig. 11a

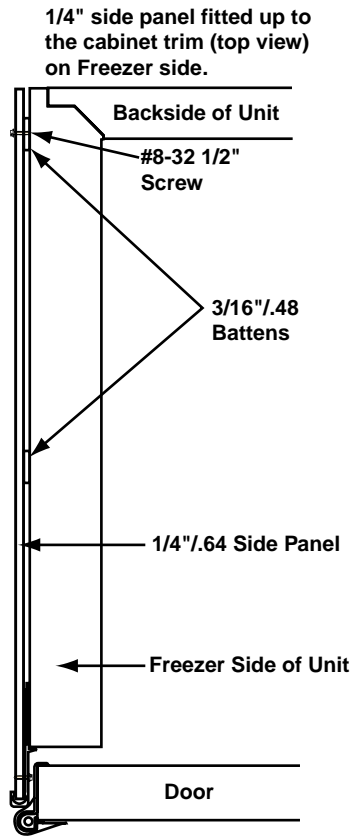


Fig. 11b

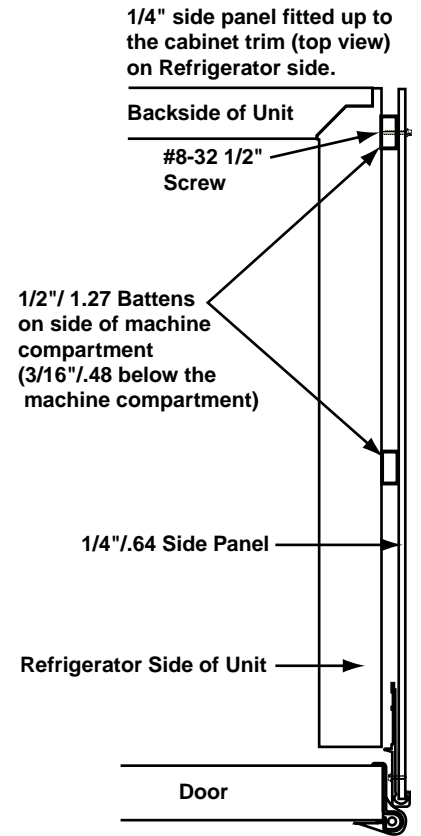


Fig. 11c

### Anchor the Unit (Optional):

If you are attaching the unit to cabinetry, drill three 3/16" holes through both outer trims. Drill 1/8" pilot holes into the cabinetry. Install screws.

Additionally: If the depth/height of opening is excessive use steel hanger strap. Double over strap at the anchor points to secure cabinet.

### Adjust door hinges:

Check to make sure the doors are properly adjusted. If not, adjust the top hinges. The hinges are slotted for side to side movement. Remove and discard the small phillips screw on the door hinge, which is located on the hinge. Adjust the top hinges by loosening the 3 large Torx screws. Tighten the screws after the doors are adjusted. Extruded door handles can be adjusted for alignment by loosening the screws under the magnetic backed molding (See fig. 8a).

