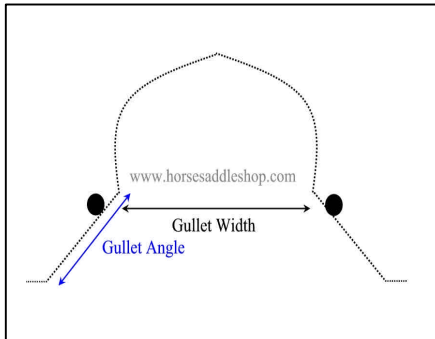
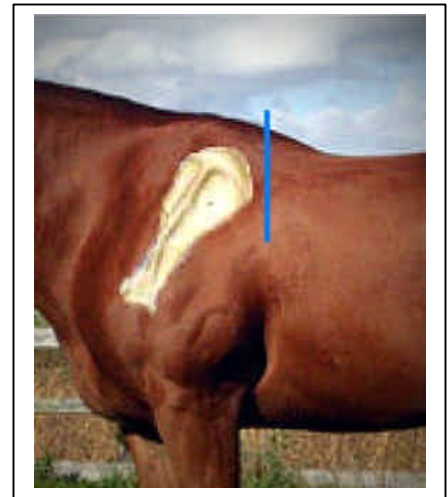
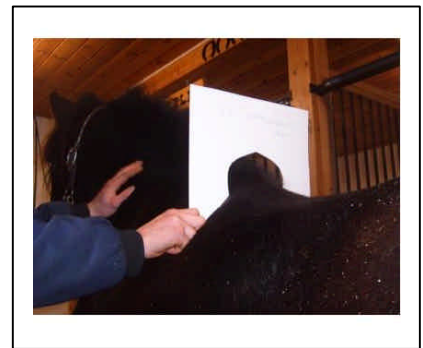


Template Instructions



The downloadable templates are available in the Normal/Narrow Angle, Wide Angle and Very Wide Angle.

1. Cut out both sides of the template. There should be a left and right side.
2. Discard the center parts (the center parts can be used to determine existing saddle gullet angle).
3. Tape the two sides together to create the outline of the saddle gullet.
4. Use the template to trace onto cardboard.
5. Cut out the outline of the gullet from the cardboard tracing.
6. Place the outline on your horse where the fork (front of the saddle) would rest. The diagram on the right shows the proper placement of the template (blue bar).
7. Once you find which angle fits best, you can either call our toll free number 1-866-880-2121 or fill out the form at www.horsesaddleshop.com/templates.html



Wide Angle

Right Side Cardboard Template

Discard this side

Horse goes here.

Wide Angle

Left Side Cardboard Template



Discard this side

Horse goes here.

Very Wide Angle

Right Side Cardboard Template

Often Draft, Haflinger
or Flat Back Mutton Withers

Discard this side

Horse goes here.

Very Wide Angle

Left Side Cardboard Template

Often Draft, Haflinger
or Flat Back Mutton Withers

Discard this side

Horse goes here.



Normal/Narrow Angle
Right Side Cardboard Template

Discard this side

Horse goes here.

Normal/Narrow Angle

Left Side Cardboard Template



Discard this side

Horse goes here.