

## EX12LED – Infrared LED Illuminator

The EX12LED is a versatile, effective and economical infrared illuminator that provides night-time covert lighting control for short range indoor and outdoor surveillance. The compact cube shape illuminator is designed to be located near or in the dark areas of a surveillance site, while cameras can be located further away.

The low voltage illuminator can be safely and discreetly installed to enhance the night-time performance of existing and new infrared sensitive cameras. Installers can now provide as much infrared light as necessary to get the picture in a dark scene.

The EX12LED is comprised of 42 LEDs mounted to a solid core CNC machined aluminum housing that acts as a heat sink. A voltage regulator allows for 12 VDC or 24 VAC operation. An adjustable photocell allows the installer to set the ambient light level for on/off operation. The EX12LED is available in 850 nm or 940 nm, and with 30 degree or 60 degree beam patterns, and achieves beam distances of 10 feet to 40 feet. A variable resistor that acts like a dimmer, allows the installer to adjust the infrared light intensity. Two 1/4-20 receptacles allow for easy mounting onto standard camera brackets. A top or bottom mount U-bracket is standard.



**Above:** The EX12LED can be installed as a covert infrared illuminator to enhance the night-time performance of existing monochrome cameras that are installed high and away from target subjects. With 1/4-20 mounts located at its bottom and rear, the EX12LED can be installed to ceilings and walls. It can also be discreetly set on top of tables, bars and shelving to enhance the night time lighting for covert surveillance.

**Below:** The matching EX12S300 infrared sensitive camera makes for attractive, discreet 24 hour surveillance.

### **Applications:**

- **Discreet Night CCTV**
- **Nightclubs / Lounges**
- **Covert Surveillance**
- **Public Buildings**
- **Industrial Buildings**
- **Indoor / Outdoor**



Dealer / Distributor :

**Derwent Extreme Technologies Inc.**

Global HQ:

<http://www.ExtremeCCTV.com>

USA/Canada Operations: 4060 McConnell., Burnaby, BC Canada V5A 3A8

Toll Free N.A. 888-409-2288 Tel. +1.604.533.6644 Fax +1.604.533.7800

**Specifications** (Other Special Order Models available on request)

**EX12LED – All Models**

LED Type	High Performance 850nm / 940nm
LED Beam Angles	60 deg. (W), 30 deg. (M)
Number of LEDs	42
Output Control	Variable Resistor
Photocell	Automatic On/Off adjustable
Operational Range	-20°C to +50°C (-4°F to 122°F)
Humidity Range	Up to 85% relative humidity
Voltage Regulator	Included for electronic protection
Power Supply	12 VDC or 24 VAC
Power Draw	700 mA (Max.)

**Enclosure:**

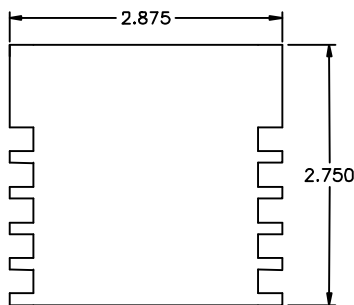
Housing	CNC Aluminum Anodized (6061 T6) black
Front Window	Optical Acrylic
Back Cover	Anodized Aluminum Plate, Gasketed
Mount	1/4-20 thread at bottom and rear
U-Bracket	Standard
Dimensions	W: 730mm D: 699mm H: 699mm (2.9" X 2.75" X 2.75")
Weight	1.0 lbs (454g)

**Specific Models:**

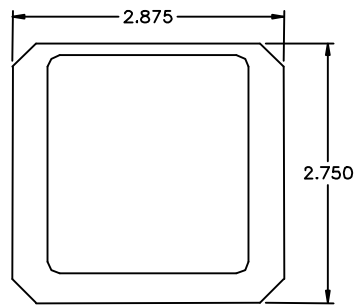
<b>EX12LED.850W</b>	850nm, 60 deg. Wide Beam
<b>EX12LED.850M</b>	850nm, 30 deg. Medium Beam
<b>EX12LED.940W</b>	940nm, 60 deg. Wide Beam
<b>EX12LED.940M</b>	940nm, 30 deg. Medium Beam

**Performance Notes:**

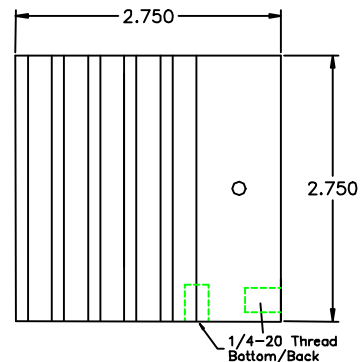
1. Use good infrared sensitive cameras for better results.
2. 850nm models emit a slight red visible glow.
3. 940nm models are not visible, but require best I.R. sensitive cameras.



TOP VIEW



FRONT VIEW



SIDE VIEW

Dealer / Distributor :