

Key Features

- UL and CSA certified for explosion protected performance
- Class I, Division 1 & 2, Groups B, C, D
- Class II, Division 1 & 2, Groups E, F, G
- Class III
- Safe for use even in environments where explosive gases are present under normal operating conditions
- Available with mechanical filter technology for vivid color by day and exceptional response under infrared
- High-strength design, featuring construction of sand-cast, copper-free aluminum that can withstand an internal explosion
- Threaded flame paths ensure maximum safety
- Small, compact design
- Voltage regulated for 12VDC / 24VAC operation
- T6 temperature code
- NEMA 4X rated for indoor and outdoor performance
- Various fixed lens available from 3.6mm to 12mm

Product Description

The EX70 series are tough, compact, explosion protected cameras for effective surveillance in hazardous environments.

The EX70 series are certified for Class I, Division 1 environments, the most stringent safety standards for explosion-protected performance. In practical terms, the Class I, Division 1 certifications signify that the EX70 are safe for use even in environments where explosive gases are present under normal operating conditions.

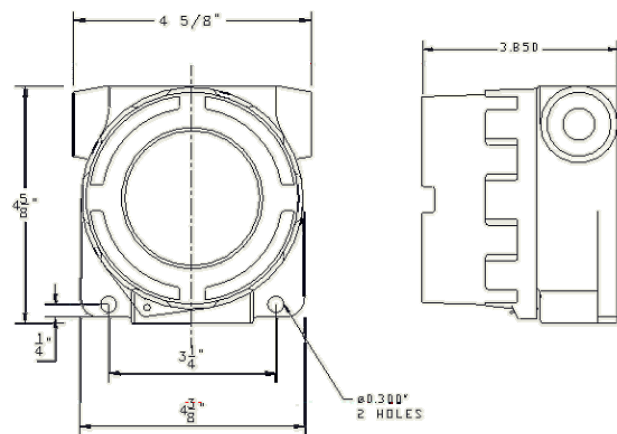
The EX70 series incorporates high-strength design, featuring construction of sand-cast, copper-free aluminum strong enough to withstand an internal explosion. Threaded flame paths extinguish burning explosive gases and allow them to exit the housing harmlessly, without risking ignition in the external environment.

By meeting the rigorous requirements for Class I, Division 1 environments, the EX70 series assures safe, effective performance at hazardous Class II and Division 2 locations.

In addition to providing certified explosion-protected surveillance, the EX70 series delivers outstanding optical performance. The EX70 has an optional mechanical filter technology for vivid color by day and exceptional spectral response to infrared in low-light conditions. When combined with IR illuminators, mechanical filter CCDs provide exceptional night vision performance.

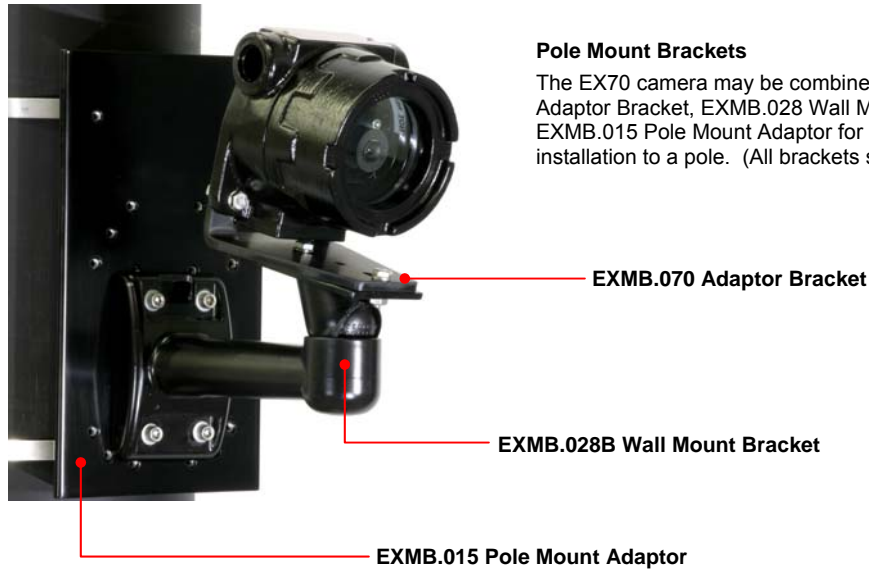
Rated NEMA 4X for both indoor and outdoor use, the EX70 series carry a T6 temperature code, the lowest and safest rating. Compatible with fixed lenses from 3.6mm to 12mm, the EX70 series is easy to install into any 12VDC or 24VAC system and is a safe and effective solution for hazardous locations.

Product Image



Applications

- Petroleum processing facilities
- Chemical factories
- Agricultural processing plants
- Refineries
- Munitions storage
- Oil and gas plants
- Fuel storage sites
- Industrial plants
- Nuclear facilities
- Pharmaceutical plants
- Aircraft hangers

EX70 Installation Tip

Certifications / Compliance

	EX70 Explosion Protected Surveillance Enclosure
CSA/NRTL	LR 113310
Class	2258 / 82 - Process Control Equipment - For Hazardous Locations - Certified to US Standard
	2258 / 02 - Process Control Equipment - For Hazardous Locations
Safety	OSHA / ANSI / UL / CSA
	UL 508, 16 th Edition - Industrial Control Equipment
	UL 698, 11 th Edition - Industrial Control Equipment for Use in Hazardous (Classified) Locations
	UL 1203, 2nd Edition - Explosion-Proof and Dust-Ignition-Proof Elec. Eqmt for Use in Hazardous (Classified) Locations
	CSA C22.2 No.0-M1991 - General Requirements - Canadian Electrical Code Part II
	CSA C22.2 No.0.4-M1982 - Bonding and Grounding of Electrical Equipment (Protective Grounding)
	CSA C22.2 No.25-M1966 - Enclosures for Use in Class II Groups E, F and G Hazardous Locations
	CSA C22.2 No.30-M1986 - Explosion-proof Enclosures for Use in Class I Hazardous Locations
	CSA C22.2 No.94-M1991 - Special Purpose Enclosures
	CSA C22.2 No.142-M1987 - Process Control Equipment
	Class I, Division 1 and 2, Groups B, C, and D
	Class II, Division 1 and 2, Groups E, F, G
	Class III
Operational	Temperature Code T6 (At ambient operational temperature of 40°C, the maximum unit surface temperature will not exceed 85°C.)
Environmental	CSA / NEMA TYPE 4X

Specifications: Photocell-Controlled Mechanical Filter Cameras, Day / Night Switching

	Day-Night Switching, Color / Monochrome	Day/Night, Color/Mono w/ Enhanced IR Performance
CCD	M4 with MFP Technology	MX4 with MFP Technology
Image Sensor	1/3" Interline SuperHAD CCD	1/3" LXR CCD
Resolution	550 TVL color / 570 TVL monochrome	550 TVL color / 570 TVL monochrome
Effective Pixels	NTSC: 768 (H) x 494 (V) • PAL: 752 (H) x 582 (V)	NTSC: 768 (H) x 494 (V) • PAL: 752 (H) x 582 (V)
Sensitivity	0.06 Lux with F1.4 lens	0.02 Lux with F1.4 lens
S/N Ratio	Greater than 48dB (AGC off)	Greater than 48dB (AGC off)
Signal Processing	Digital Signal Processing (DSP)	
Output Signal	1Vp-p, 75Ω	
BLC	On / Off selectable	
Gain Control	AGC automatic	
Electronics Iris	1/60 ~ 1/100,000 (EIA)	
Voltage	12 to 24 AC/DC	
Operational Range	-50°C to +40°C -58°F to 104°F	
Weight	3.1lbs 1.4kg	
Dimension	117 mm x 117 mm x 99 mm 4.6" x 4.6" x 3.9"	

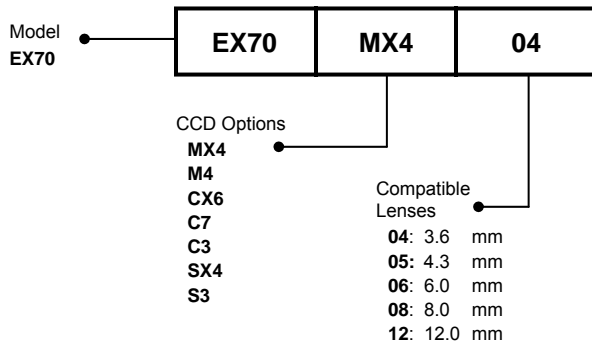
Specifications: Color Cameras

CCD	C3 Standard Performance	C7 High Resolution Color	CX6 Enhanced Infrared Performance
Image Sensor	1/3" Interline SuperHAD	1/3" Interline SuperHAD	1/3" LXR CCD
Resolution	380 TVL	480 TVL	480 TVL
Effective Pixels NTSC	NTSC: 510 (H) x 492 (V)	NTSC: 768 (H) x 494 (V)	NTSC: 811 (H) x 508 (V)
Effective Pixels PAL	PAL: 500 (H) x 582 (V)	PAL: 752 (H) x 582 (V)	PAL: 795 (H) x 586 (V)
Sensitivity	0.5 Lux @ F1.4	2.7 Lux @ F1.4	0.14 Lux @ F1.4
S/N Ratio	Greater than 48dB	Greater than 48dB	Greater than 48dB
Signal Processing	Digital Signal Processing (DSP)		
Output Signal	1Vp-p, 75Ω		
BLC	On / Off selectable		
Gain Control	AGC automatic		
Electronics Iris	1/60 ~ 1/100,000 (EIA)		
Voltage	12 to 24 AC/DC		
Operational Range	-50°C to +40°C -58°F to 104°F		
Weight	3.1lbs 1.4kg		
Dimension	117 mm x 117 mm x 99 mm 4.6" x 4.6" x 3.9"		

Specifications: Monochrome Cameras

CCD	S3 High Resolution Monochrome	SX4 Monochrome LXR
Image Sensor	1/3" Interline SuperHAD	1/3" LXR CCD
Resolution	600 TVL	420 TVL
Effective Pixels	NTSC: 768 (H) x 494 (V) • PAL: 752 (H) x 582 (V)	NTSC: 542 (H) x 492 (V) • PAL: 542 (H) x 582 (V)
Sensitivity	0.05 Lux @ F1.4	0.01 Lux @ F1.2 (SAGC on)
S/N Ratio	Greater than 50dB	Greater than 48dB
Signal Processing	Digital Signal Processing (DSP)	
Output Signal	1Vp-p, 75Ω	
BLC	On / Off selectable	
Gain Control	AGC automatic	
Electronics Iris	1/60 ~ 1/100,000 (EIA)	
Voltage	12 to 24 AC/DC	
Operational Range	-50°C to +40°C -58°F to 104°F	
Weight	3.1lbs 1.4kg	
Dimension	117 mm x 117 mm x 99 mm 4.6" x 4.6" x 3.9"	

Part Numbers *(Special Order Models available on request)*



Optional Accessories

- [EXMB.002](#) Ceiling and pedestal bracket
- [EXMB.003](#) Heavy-duty wall bracket
- [EXMB.006](#) Wall bracket
- [EXMB.007](#) Heavy-duty wall bracket
- [EXMB.008](#) Power supply 110 AC input to 12 VDC
- [EXMB.015](#) Pole mount adaptor
- [EXMB.028](#) Wall mount adaptor plate
- [EXMB.070](#) Adaptor Bracket for EX70 Series

Important Note:
 Explosion-protected housings may be subject to local or regional regulatory approval. Please check with your local authorities having jurisdiction.