



PRODUCT SPECIFICATION

EM1109/EM2000/EM2200 Mount PIPE/POLE MOUNT, MEDIUM DUTY, ENCLOSURE

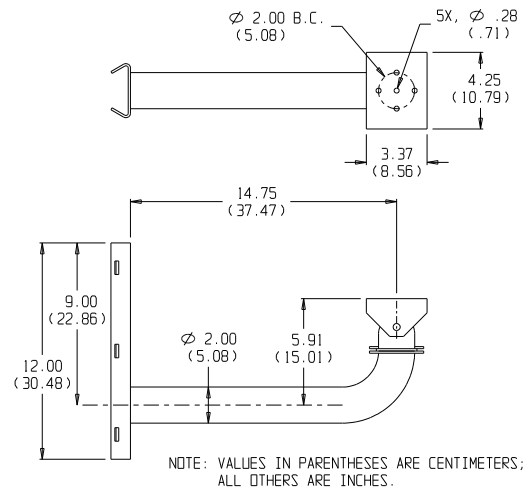
Product Features

- Low Cost
- Manually Adjustable Swivel Head
- Cable Feedthrough Hole
- Supports up to 40 lb (18 kg)
- Mounts on Vertical or Horizontal Pipe/Pole (see model description); Mounting Straps Included
- Compatible with most Pelco Enclosures having a 2-Inch (5.08 cm) Mounting Pole Pattern

The EM1109/EM2000/EM2200 are medium duty enclosure mounts designed for applications where mounting on a pipe or pole is necessary. These mounts can be used with Pelco enclosures having a 2-inch (5.08 cm) mounting hole pattern and are capable of supporting up to 40 pounds (18 kg). All three mounts feature a manually adjustable swivel head and a cable feedthrough hole to conceal wiring. Multiple mounting holes on the tilt table provide maximum 360 degree horizontal positioning of the enclosure.

The EM1109 is a pedestal mount for use on a horizontal or vertical pipe or pole. The EM2000 is a "J" type mount for use on a vertical pipe or pole, and the EM2200 is a "hook" type mount for use on a horizontal pipe or pole. The EM1109/EM2000/EM2200 must be mounted on pipes or poles having a minimum 3-inch (7.62 cm) diameter. Mounts are secured to the pipe or pole with stainless steel mounting straps (supplied). Two (2) 1/4-20 mounting bolts required to secure the enclosure to the mount are also supplied.

The EM1109/EM2000/EM2200 are constructed of aluminum and have a white epoxy powder coat finish.



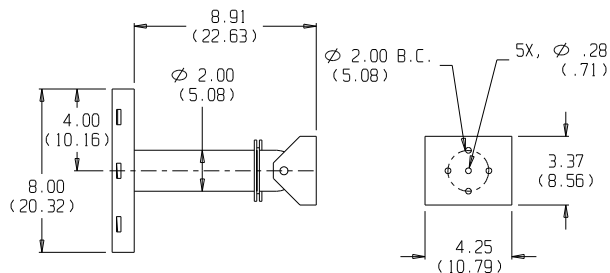
EM2000 DIMENSION DRAWING



TECHNICAL SPECIFICATIONS

MODELS

EM1109	Medium duty pedestal mount for horizontal or vertical pipe or pole applications. Manually adjustable swivel head and cable feedthrough hole. (See Recommended Enclosures below.)
EM2000	Medium duty 90 degree "J" mount for vertical pipe or pole applications. Manually adjustable swivel head and cable feedthrough hole. (See Recommended Enclosures below.)
EM2200	Medium duty "hook" mount for horizontal pipe or pole applications. Manually adjustable swivel head and cable feedthrough hole. (See Recommended Enclosures below.)



NOTE: VALUES IN PARENTHESES ARE CENTIMETERS;
ALL OTHERS ARE INCHES.

EM1109 DIMENSION DRAWING

MECHANICAL

Pan Adjustment	Unlimited 360°
Tilt Adjustment	±75°
Locking Method	3/8-16 hex head bolts (on manually adjustable swivel head)

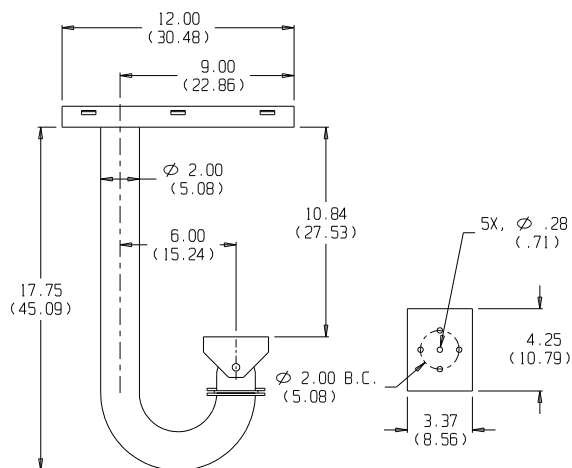
GENERAL

Suggested Mounting Method	Slots provided for use with mounting straps (stainless steel straps supplied)
Enclosure Mounting	Two (2) 1/4-20 mounting bolts (supplied)
Maximum Load	40 lb (18 kg)
Construction	Aluminum
Finish	White epoxy polyester powder coat
Environment	Indoor/outdoor
Dimensions	See dimension drawings
Shipping Weight	
EM1109	2.65 lb (1.20 kg)
EM2000	4.70 lb (2.12 kg)
EM2200	5.45 lb (2.47 kg)

RECOMMENDED ENCLOSURES

Pelco enclosures having a 2-inch (5.08 cm) mounting hole pattern can be used with these mounts. Be sure the enclosure/camera/lens combination you select does not exceed 40 lb (18 kg) and is suitable for the type of mount you have selected. The following lists most applicable enclosures.

EH3010/EH3014 Series	(see C404 spec)
EH4010 EH4014/EH4018 Series	(see C413 spec)
EH3508 Series Environmental	(see C1435 spec)
EH3512/EH3515 Series Environmental	(see C478 spec)
EH4700 Series Environmental	(see C1405 spec)
EH4700DB Series Environmental	(see C1446 spec)
E700 Series Dust-Tight	(see C415 spec)
EHX4E Explosion-Proof	(see C417 spec)
EH8100 Series Pressurized	(see C410 spec)
HS4012 High Security	(see C488 spec)



NOTE: VALUES IN PARENTHESES ARE CENTIMETERS;
ALL OTHERS ARE INCHES.

EM2200 DIMENSION DRAWING

Specifications subject to change without notice.
©Copyright 1997, PELCO. All rights reserved.